

Antibody Modified Gold Nanoparticles for Fast Colorimetric screening of Rheumatoid arthritis

Bruno Veigas,^{a,b} Ana Matias,^a Tomás Calmeiro,^b Elvira Fortunato,^b Alexandra R. Fernandes^a and Pedro Viana Baptista*^a

Supplementary Information

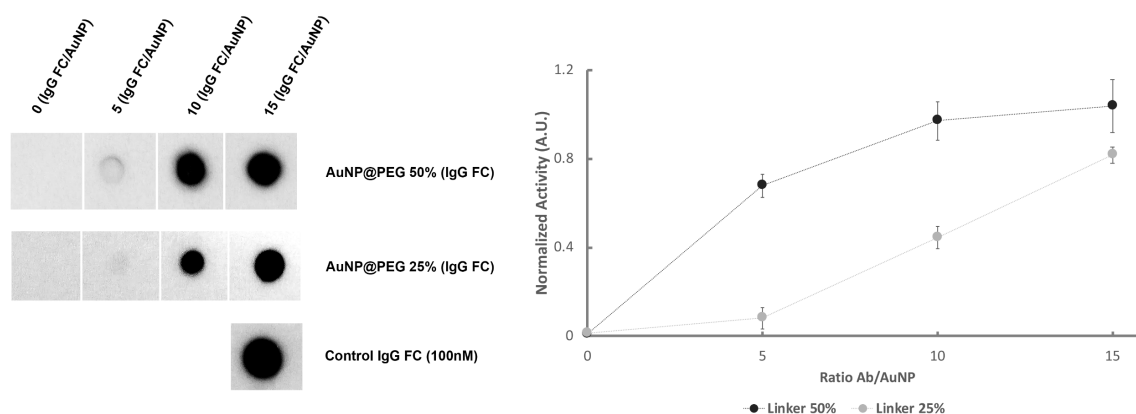


Figure S1: Characterization of Au-nanoprobes functionalized with igG-Fc for the detection of IgM RF. Quantification of probe activity was accessed via a dot blot assay. A link between the ratio of IgG-Fc per AuNP and probe activity was found. Also, a higher surface coverage of the Linker (PEG-COOH) allowed for increased probe activity.

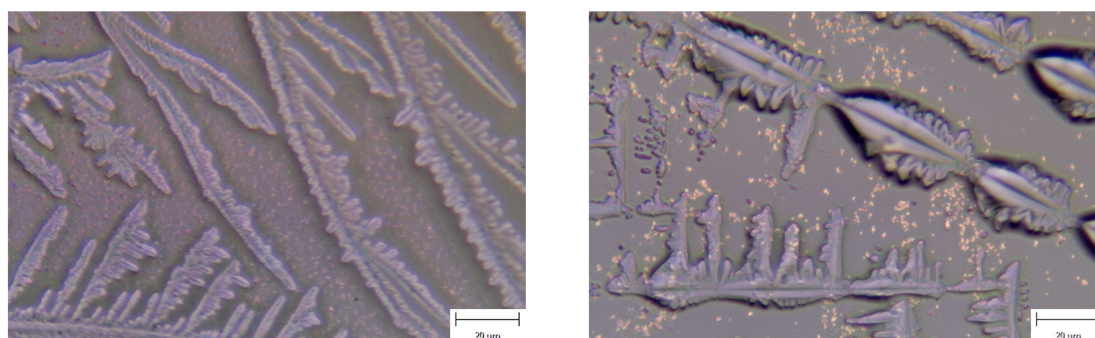


Figure S2: Microscope image of Au-nanoprobe with IgM from human plasma (left), and Au-nanoprobe with IgM RF complex (right). Concentration of 500 IU/mL of IgM RF was incubated for a period of 60 minutes before measurement.

^a. UCIBIO, Departamento de Ciências da Vida, Faculdade de Ciências e Tecnologia, Universidade NOVA de Lisboa, Campus de Caparica, 2829-516 Caparica, Portugal; *Correspondence: pmvb@fct.unl.pt

^b. CENIMAT/i3N, Departamento de Ciência dos Materiais, Faculdade de Ciências e Tecnologia, Universidade NOVA de Lisboa, Campus de Caparica, 2829-516 Caparica, Portugal.

Electronic Supplementary Information (ESI) available: [details of any supplementary information available should be included here]. See DOI: 10.1039/x0xx00000x