

Supplementary Information Bluecher, Zilberfain et al.

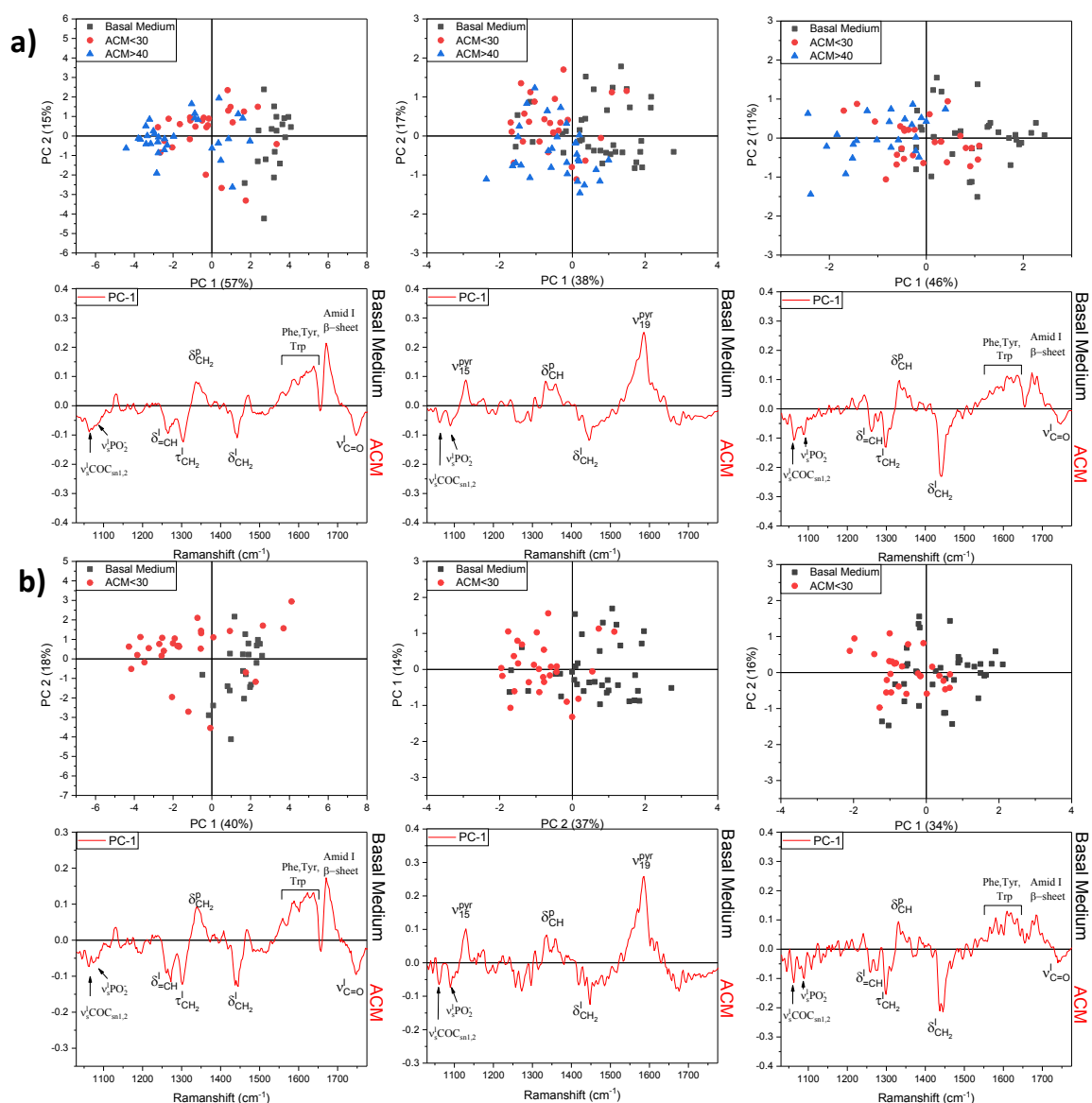


Figure S1: **a)** PCA of the SNV normalized spectra of LDs, mitochondria and ER extracted from single MDA-MB-231 cells which were incubated with basal medium, ACM_{<30>} and ACM_{>40}. The separation of the cell populations occurs gradually from basal medium over ACM_{<30>} to ACM_{>40} along PC 1, which is displayed in the loading plots below. **b)** PCA of the SNV normalized spectra of LDs, mitochondria and ER extracted from breast cancer cells incubated with basal medium and ACM_{<30>}. The cell populations are separated in the score plot along PC 1, which is displayed in the loading plots below. (δ , deformation; ν , stretching; τ - twisting; l – lipids; p – proteins, pyr – pyrrole rings of porphyrin in cytochrome)