

## **Supporting Information**

Simultaneous determination of cytokinins by high performance liquid chromatography with resonance Rayleigh scattering and mechanism discussion

Zhongying Zhang, Jingdong Peng,\* Shiyu Li, Huanjun Peng, Xiang Wang, Dengying

Long, Jun Chen, Hong Xian and Ranxi Ni

School of Chemistry and Chemical Engineering, Southwest University, Chongqing,

400715, P. R. China.

E-mail: [hxpengjd@swu.edu.cn](mailto:hxpengjd@swu.edu.cn).

## Addition figures

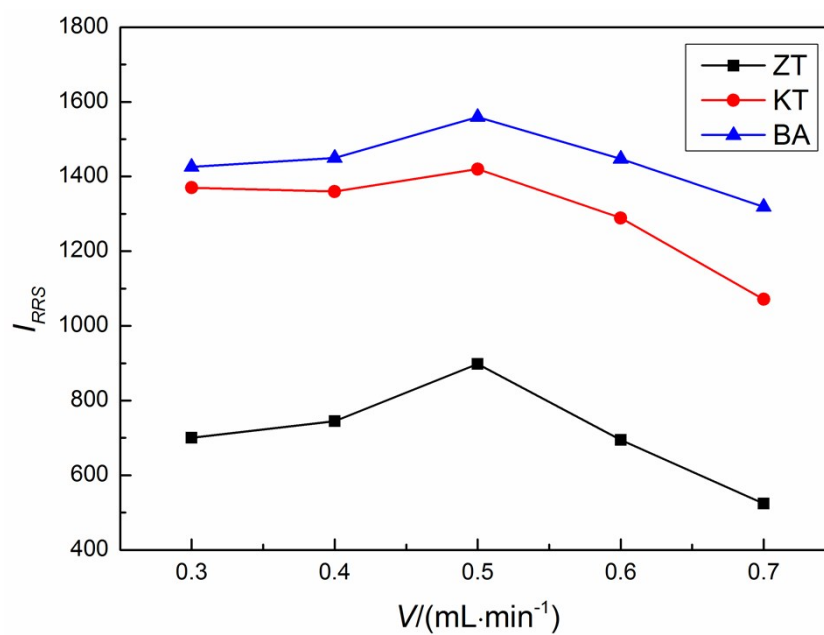


Fig. S1 Effect of mobile phase flow rate, concentration of the drugs was  $10 \mu g mL^{-1}$

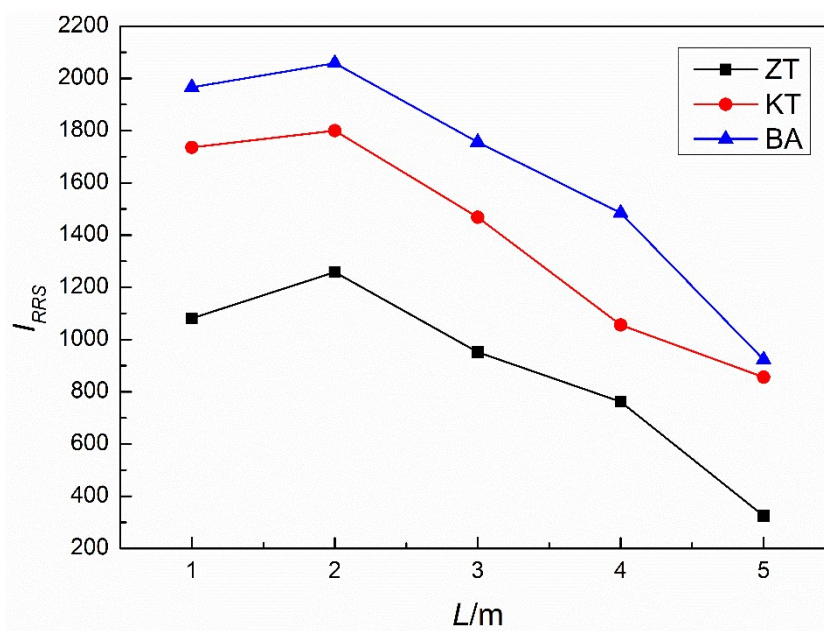
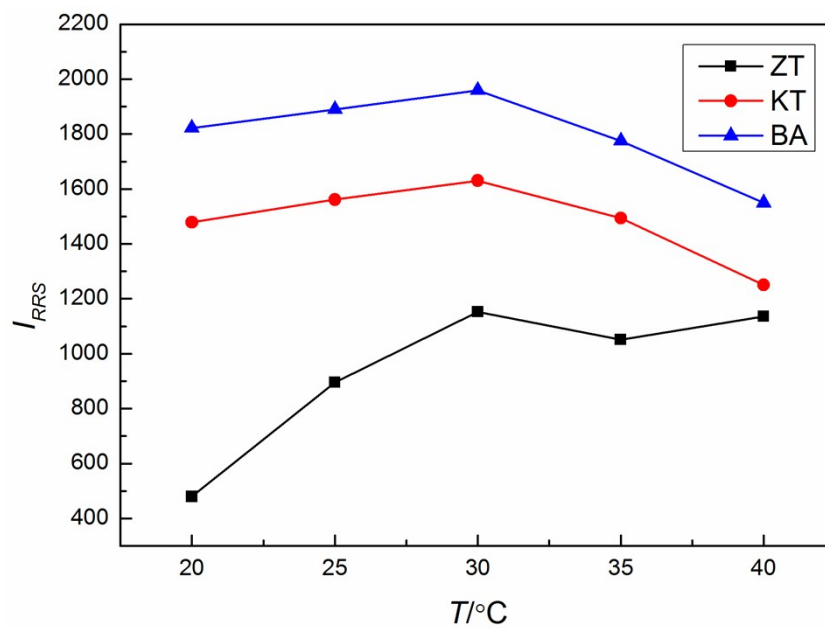
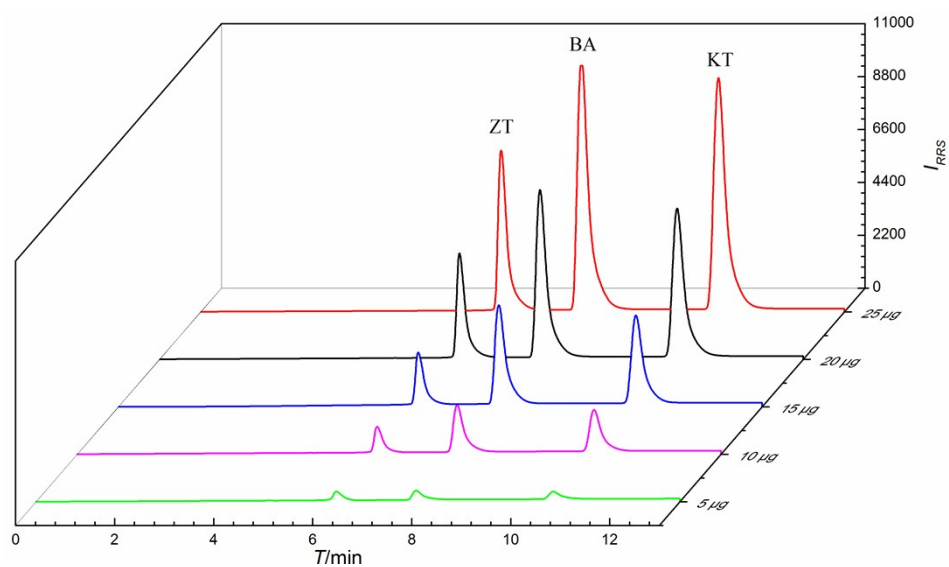


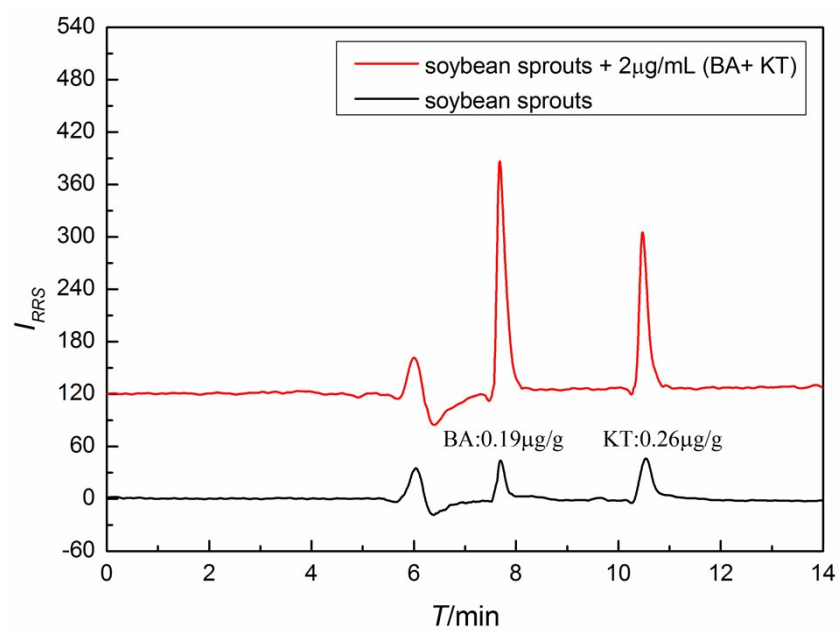
Fig. S2 Effect of reaction tube length, concentration of the drugs was  $10 \mu g mL^{-1}$



**Fig. S3** Effect of reaction temperature, concentration of the drugs was  $10 \mu\text{g mL}^{-1}$



**Fig. S4** Standard curve method for determination of cytokinins.



**Fig. S5** Chromatograms of spiked (red line) and real (black line) samples.