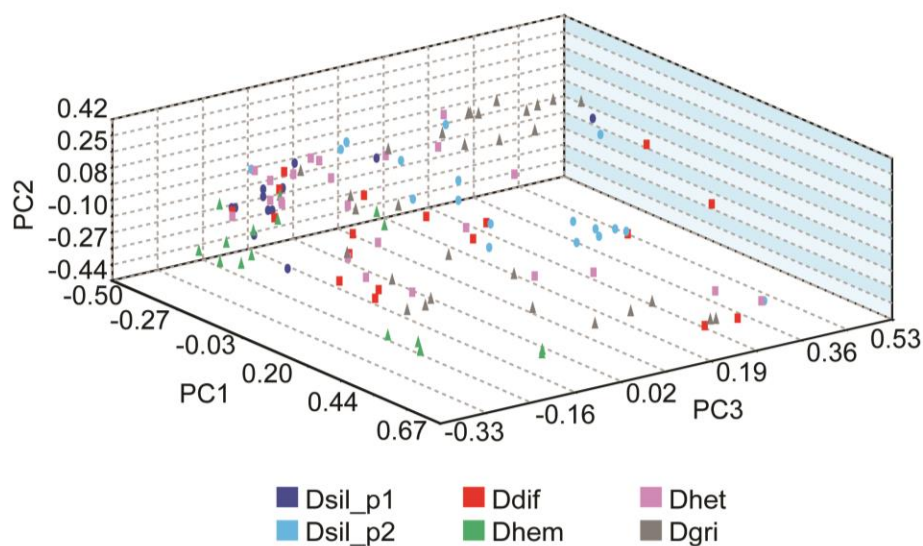
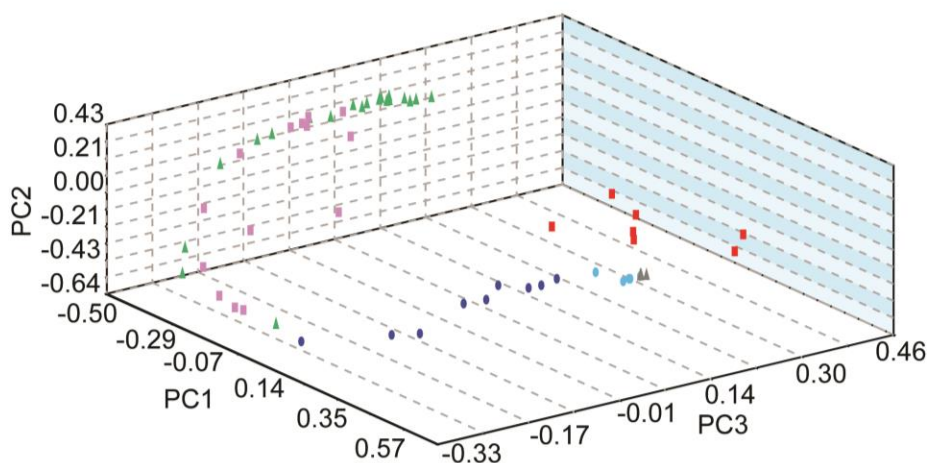


(A) KPCA: FAME profile



(B) KPCA: O₃ profile



Supplemental Figure 1. Kernel principal component analysis (KPCA) using FAME or O₃-FAME features. The KPCA model using features from non-O₃ spectra does not show robust clustering (LOOCV: 43%). By contrast, KPCA analysis with O₃ data shows clustering by species (LOOCV: 76%).