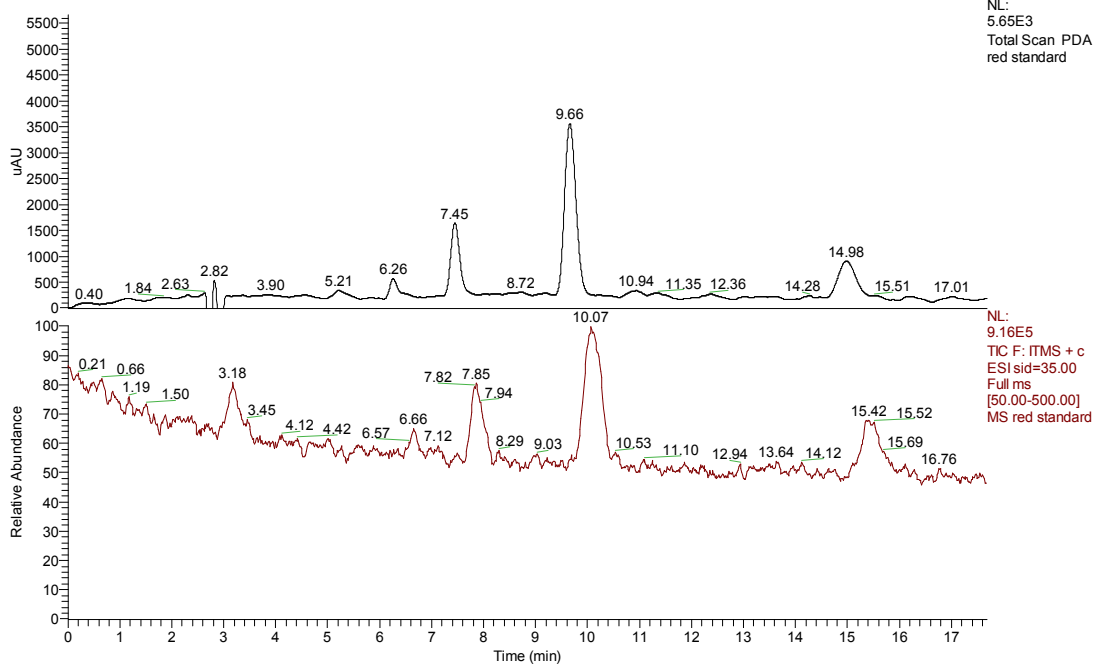
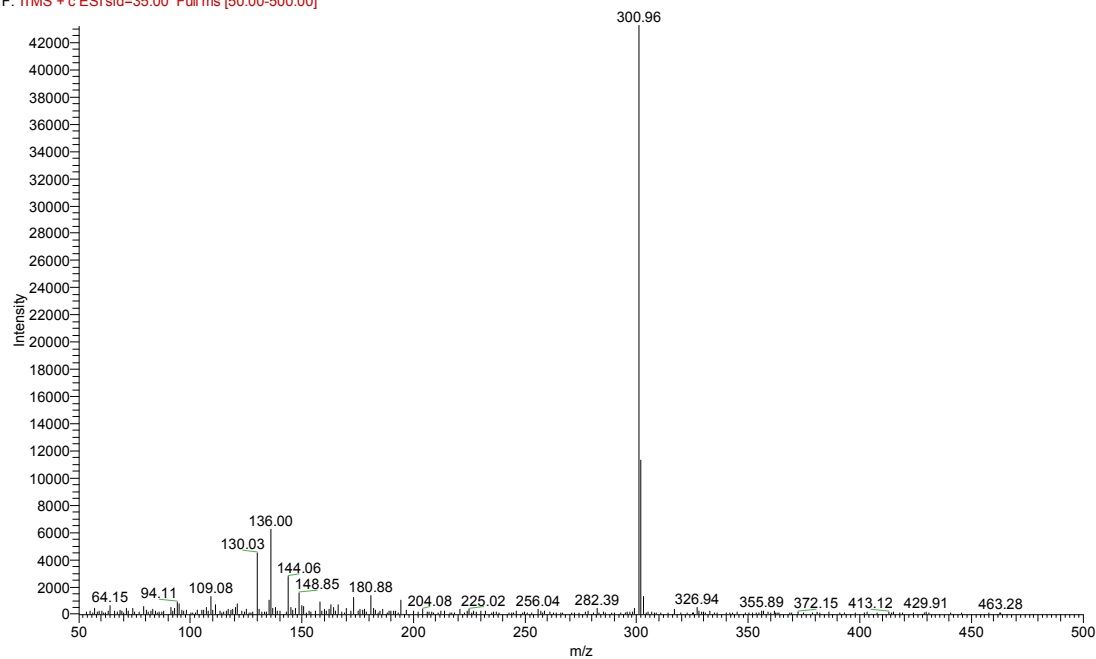


### Red 1

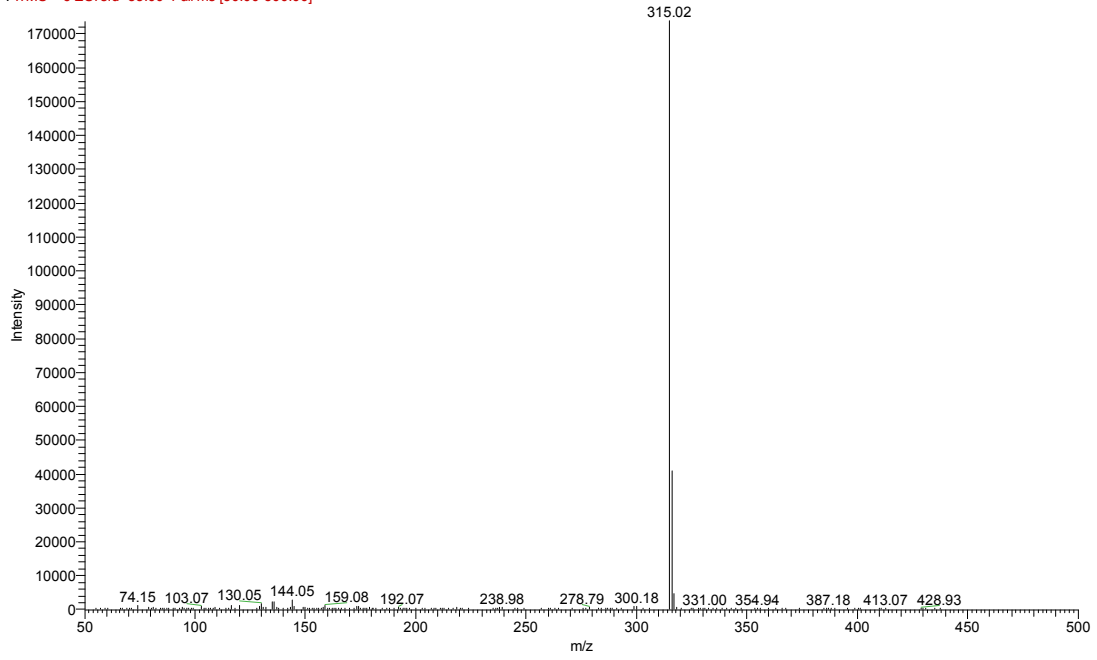
RT: 0.00 - 17.68 SM: 7B



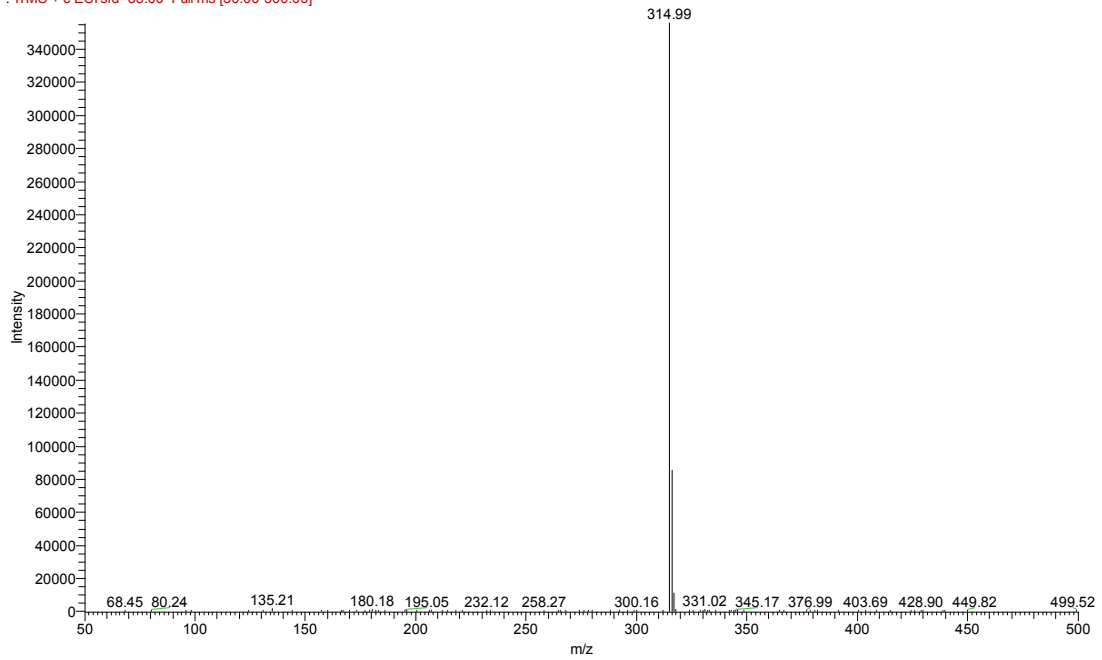
red standard #931 RT: 6.68 AV: 1 SB: 78 5.11-6.20 NL: 4.32E4  
F: ITMS + c ESI sid=35.00 Full ms [50.00-500.00]



red standard #1095 RT: 7.85 AV: 1 SB: 78 5.11-6.20 NL: 1.73E5  
F: ITMS + c ESI sid=35.00 Full ms [50.00-500.00]



red standard #1407 RT: 10.10 AV: 1 SB: 78 5.11-6.20 NL: 3.55E5  
F: ITMS + c ESI sid=35.00 Full ms [50.00-500.00]



red standard #2147 RT: 15.40 AV: 1 SB: 78 5.11-6.20 NL: 1.16E5  
F: ITMS + c ESI sid=35.00 Full ms [50.00-500.00]

