

*Electronic Supplementary Information (ESI)*

**Rapid and Specific Duplex Detection of Methicillin-resistant  
*Staphylococcus aureus* Genes by Surface-enhanced Raman Spectroscopy**

Phani R Potluri<sup>1</sup>, Vinoth Kumar Rajendran<sup>1</sup>, Anwar Sunna<sup>1,2\*</sup> and Yuling Wang<sup>1\*</sup>

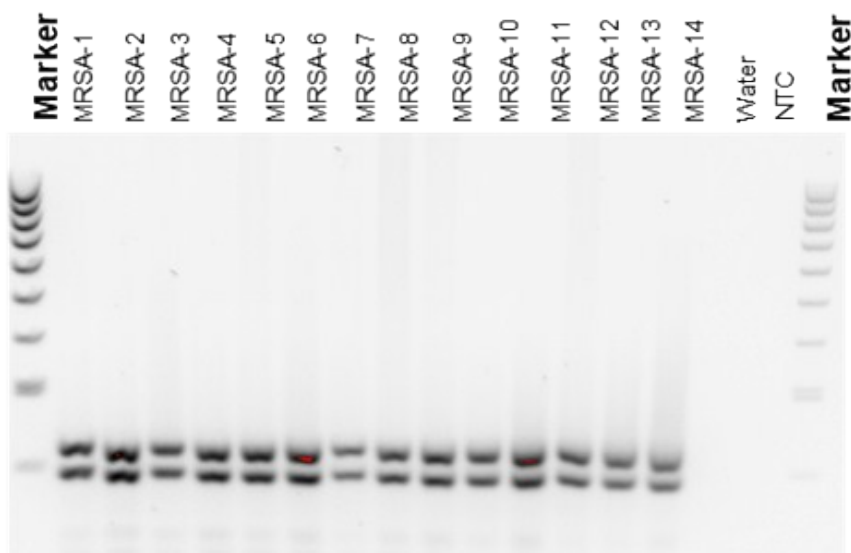
<sup>1</sup> Department of Molecular Sciences, Macquarie University, Sydney, Australia.

<sup>2</sup> Biomolecular Discovery and Design Research Centre, Macquarie University, Sydney,  
Australia

**Table S1.** The sequences of primer pair used for PCR

Target gene	Description	Sequence (5' – 3')
<i>femA</i> gene	Forward Primer	GCTACACGAT(C3)GCATGCCATACAGTCATTTACGCAAA
	Reverse Primer	biotin TCGATCACTGGACCGCGATTTGAATA
	Capture Probe	ATCGTGTAGCTTTTT-SH
<i>mecA</i> gene	Forward Primer	TACACAGCAC(C3)GGAGAAACTGGCAGACAAATTGGGTGGT
	Reverse Primer	biotin- GCAACCATCGTTACGGATTGCTTCACTG
	Capture Probe	GTGCTGTGTATTTTT-SH

**Figure S1: Validation on clinical samples of MRSA**



**Fig.S1.** Gel electrophoresis showing the PCR amplified product with *mecA* and *femA* genes of various clinical isolate samples (MRSA 1-14). NTC; negative template control (lambda DNA); Water; DNA was substituted for water in the sample