

## Supplementary Material

Target-activated DNA Nanomachine for ATP detection based on SERS  
of plasmonic coupling from gold nanoparticles aggregation

*Yanfang Cui<sup>a</sup>, Haiwang Wang<sup>b</sup>, Su Liu<sup>c</sup>, Yu Wang<sup>a\*</sup>, Jiadong Huang<sup>a,d</sup>*

<sup>a</sup> Department of Clinical Laboratory, Binzhou Medical University Hospital, Binzhou 256603, P. R. China

<sup>b</sup> College of Biological Sciences and Technology, University of Jinan, Jinan 250022, P. R. China

<sup>c</sup> College of Water Conservancy and Environment, University of Jinan, Jinan 250022, P. R. China

<sup>d</sup> Key Laboratory of Chemical Sensing & Analysis in Universities of Shandong, College of Chemistry and Chemical Engineering, University of Jinan, Jinan 250022, P. R. China

\* Corresponding author. E-mail: bio\_wangy@ujn.edu.cn; Tel.: +86-531-89736122;  
Fax: +86-531- 82769122.

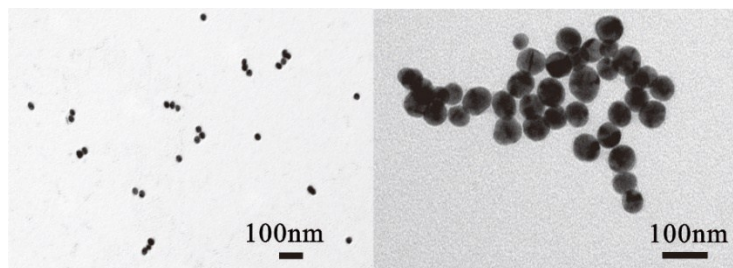


Fig.S1 TEM images of AuNPs modified DNA and 4-ATP incubated with Exo III in the absence (left) and presence (right) of 10 nM ATP.