

Supplementary Information

Rapid Quality Control of Medicine and Food Dual Purposes Plant Polysaccharides by Matrix Assisted Laser Desorption/Ionization Mass Spectrometry

Huiwen Wang,^{a, †} Xiaoyong Zhao,^{a, †} Yu Huang,^a Jiancong Liao,^a Yaqin Liu^a and Yuanjiang Pan^{a, *}

¹ Department of Chemistry, Zhejiang University, Hangzhou 310027, China; panyuanjiang@zju.edu.cn

* Correspondence: panyuanjiang@zju.edu.cn; Tel.: +86 571 87951629

[†] These authors contributed equally to this study.

Table of contents

Cover page	S1
Figure S1	S2
Figure S2	S3
Figure S3	S4
Figure S4	S5
Figure S5	S6
Figure S6	S7
Figure S7	S8
Figure S8	S9
Figure S9	S10
Figure S10	S11

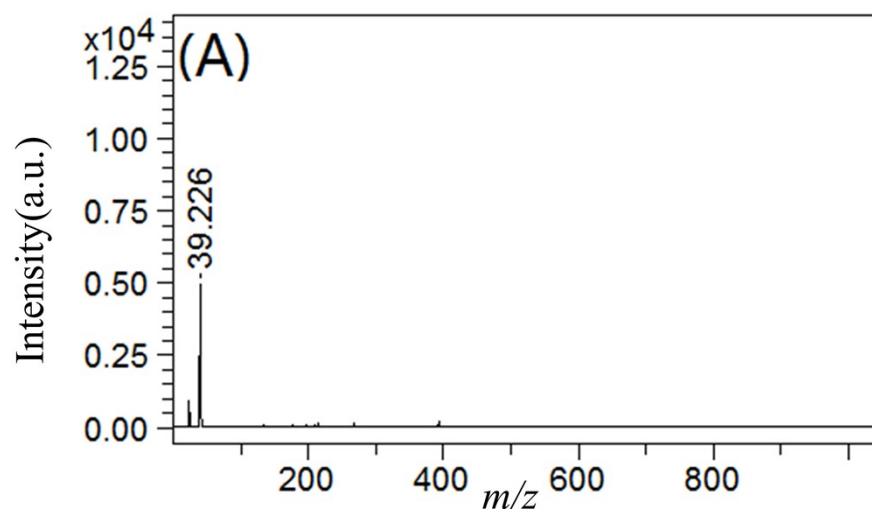


Figure S1. MALDI-TOF spectrum for Fe_3O_4 NPs in positive mode.

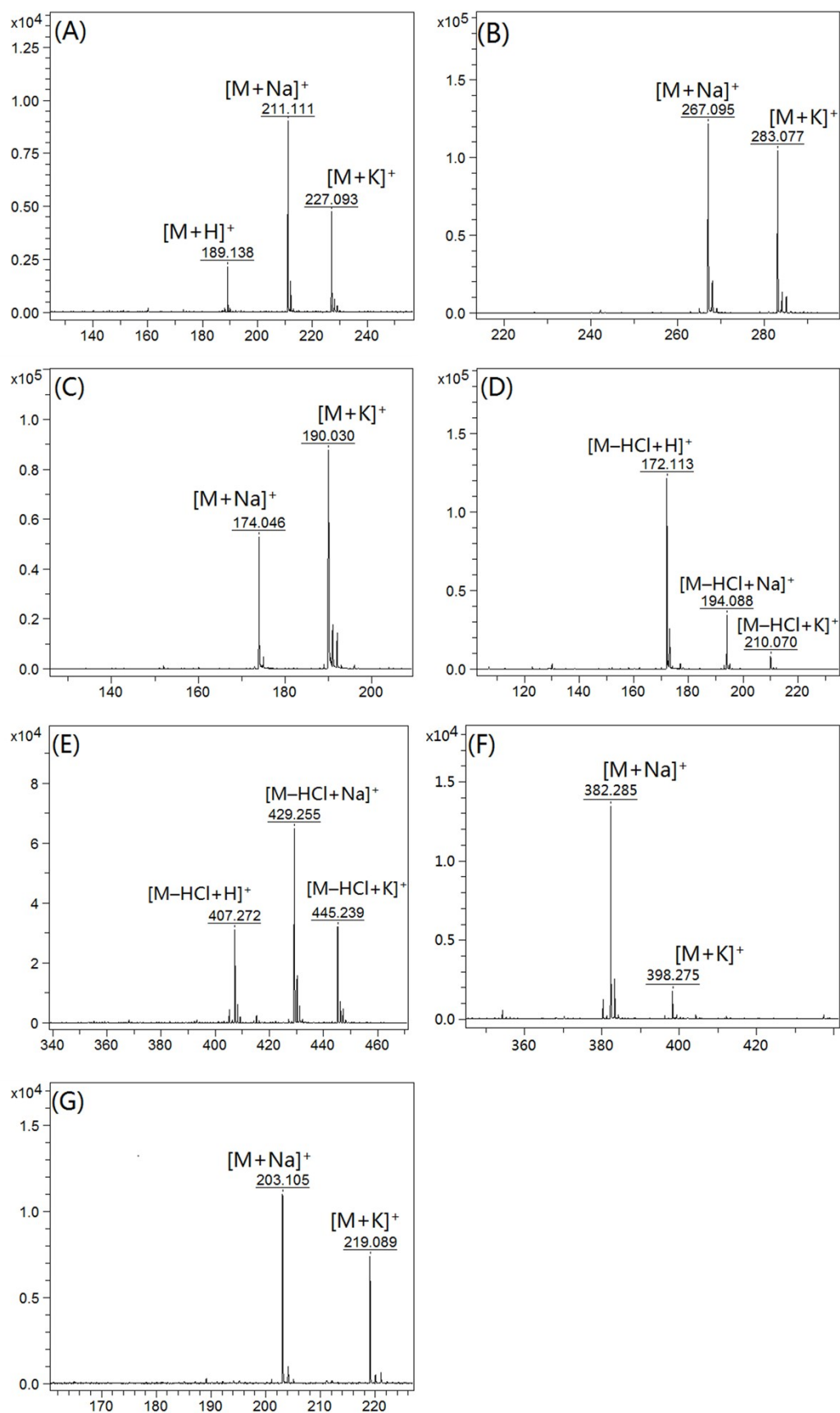


Figure S2. MALDI-TOF spectra detected by Fe_3O_4 NPs matrix in positive and reflectron mode of. (A) ATPR; (B) RTCA; (C) APAP; (D) ABOB; (E) LCM; (F) ENR; (G) Glu.

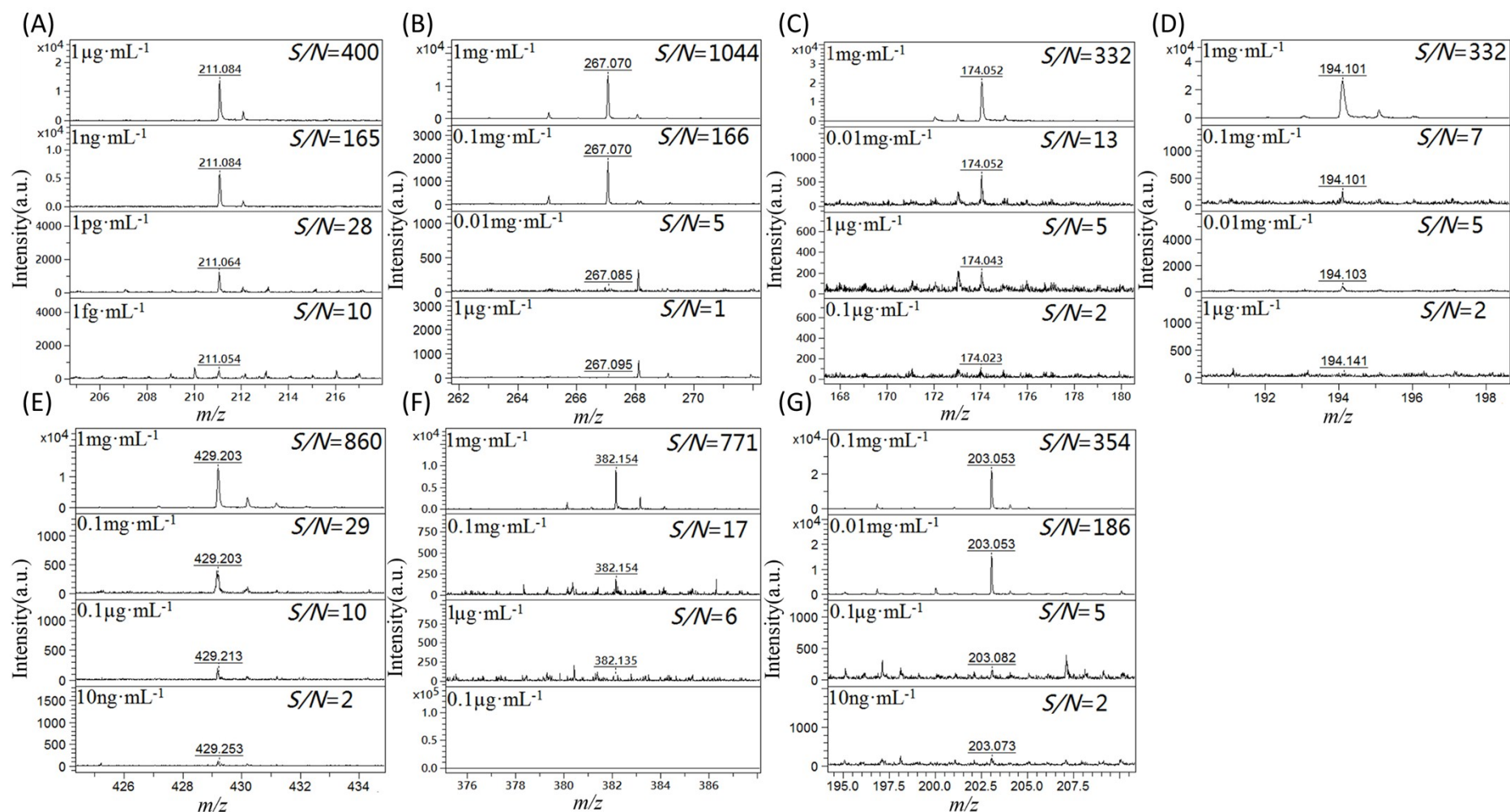


Figure S3. MALDI-TOF spectra detected by Fe_3O_4 NPs matrix in positive and reflectron mode with different concentrations of (A) ATPR; (B) RTCA; (C) APAP; (D) ABOB; (E) LCM; (F) ENR; (G) Glu.

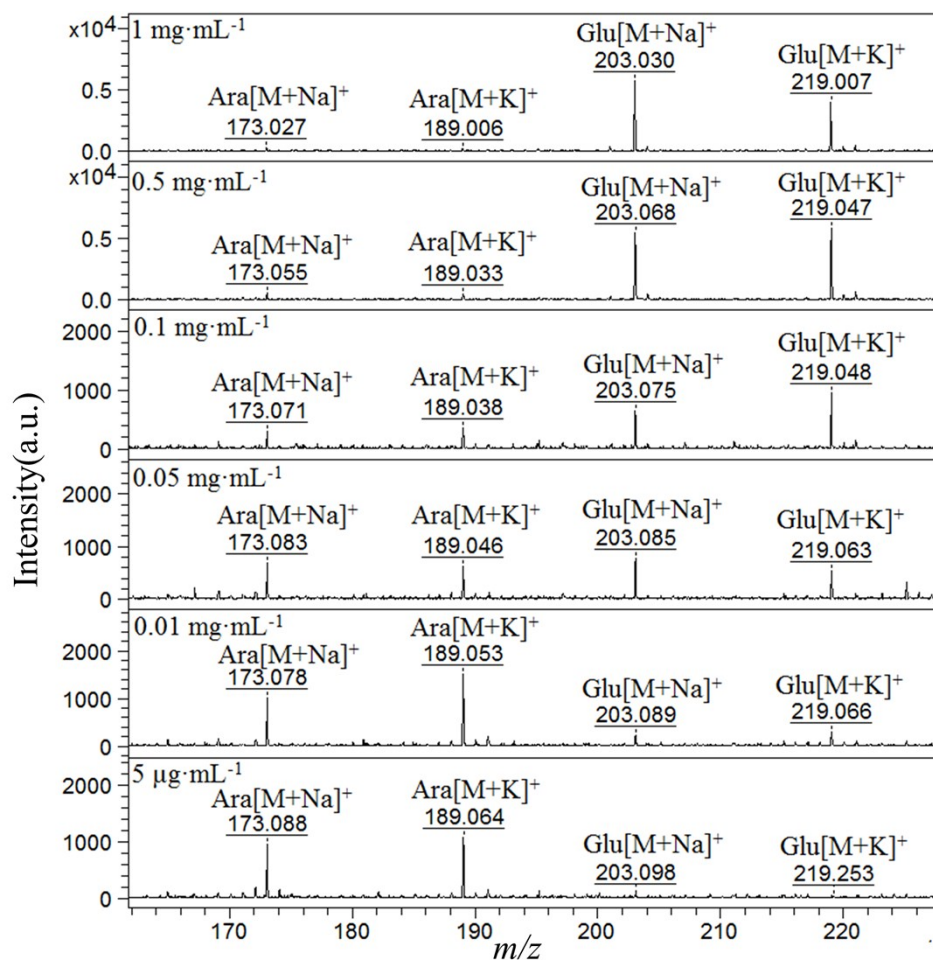


Figure S4. MALDI-TOF spectrum detected by Fe₃O₄ NPs matrix in positive and reflectron mode for 0.05 mg·mL⁻¹ Ara with different concentrations of Glu, (A) 1 mg·mL⁻¹; (B) 0.5 mg·mL⁻¹; (C) 0.1 mg·mL⁻¹; (D) 0.05 mg·mL⁻¹; (E) 0.01 mg·mL⁻¹; (F) 0.005 mg·mL⁻¹.

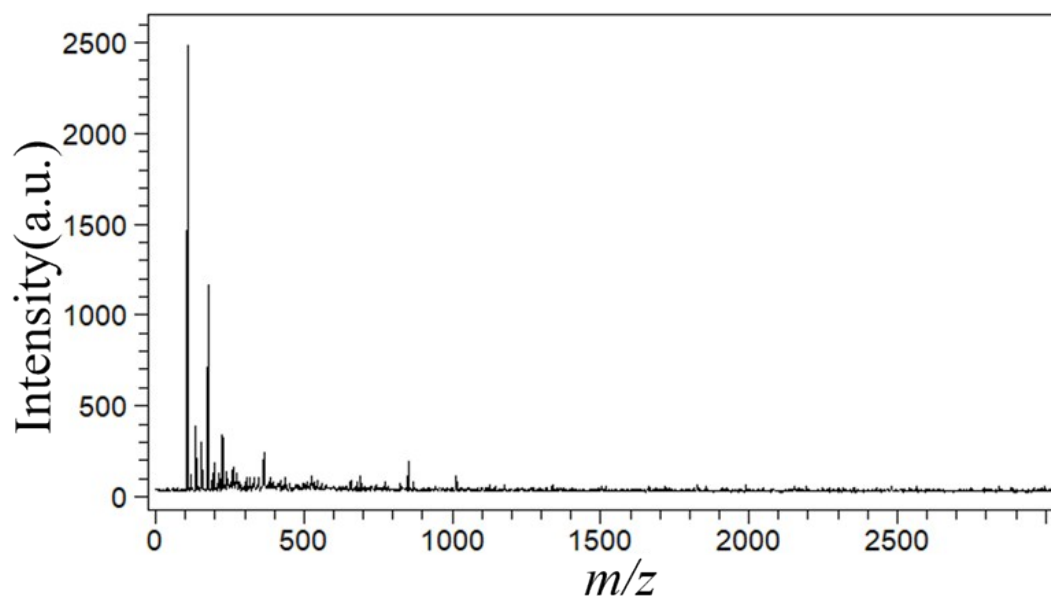


Figure S5. MALDI-TOF spectrum for DHB/N-MA without secondary matrix in positive and reflectron mode.

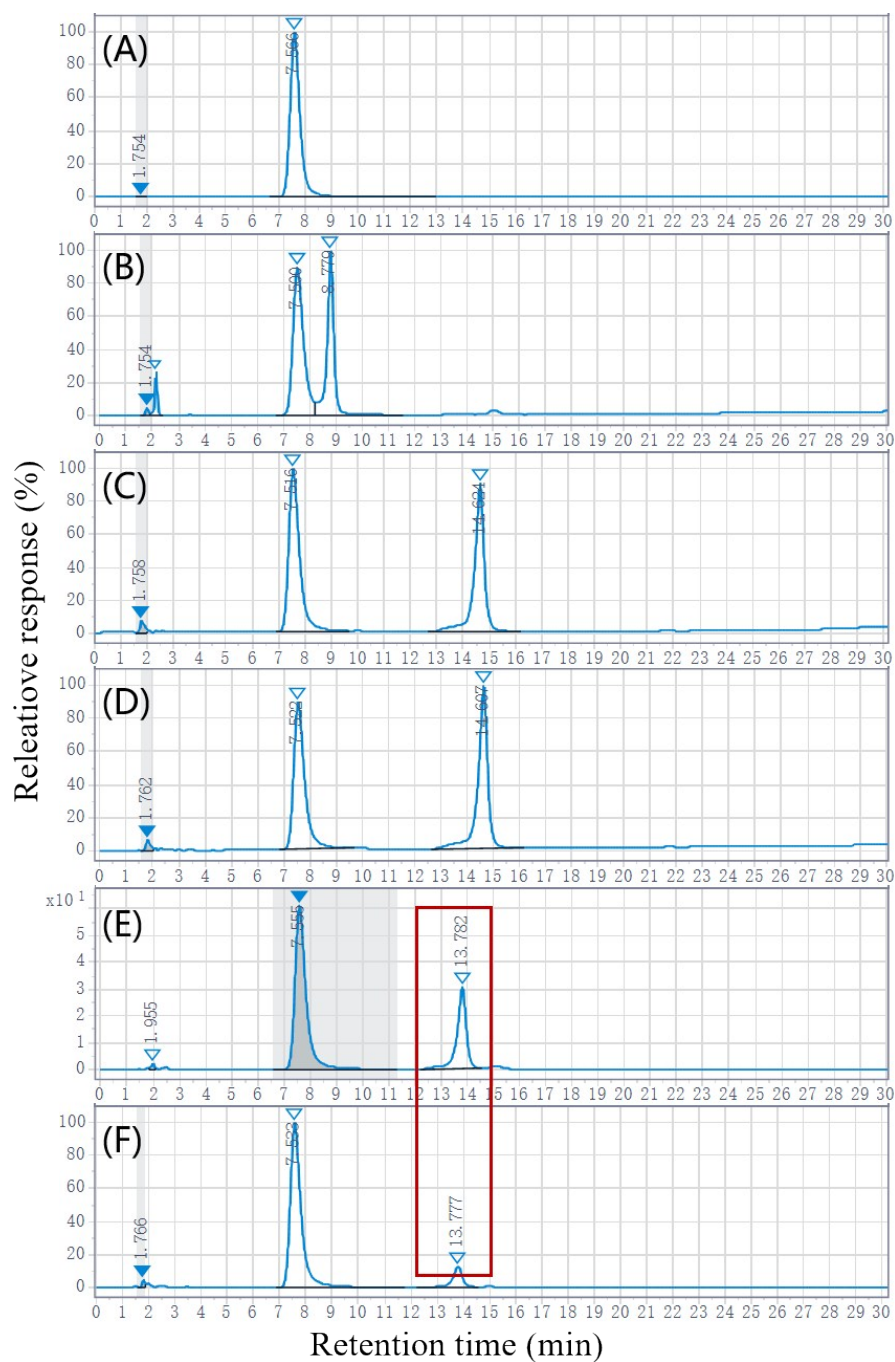


Figure S6. HPLC chromatograms of monosaccharide analysis for different compounds. (A) PMP standard; (B) Man standard; (C) Gal standard; (D) Fru standard; (E) Glu standard; (F) APS-1 real sample.

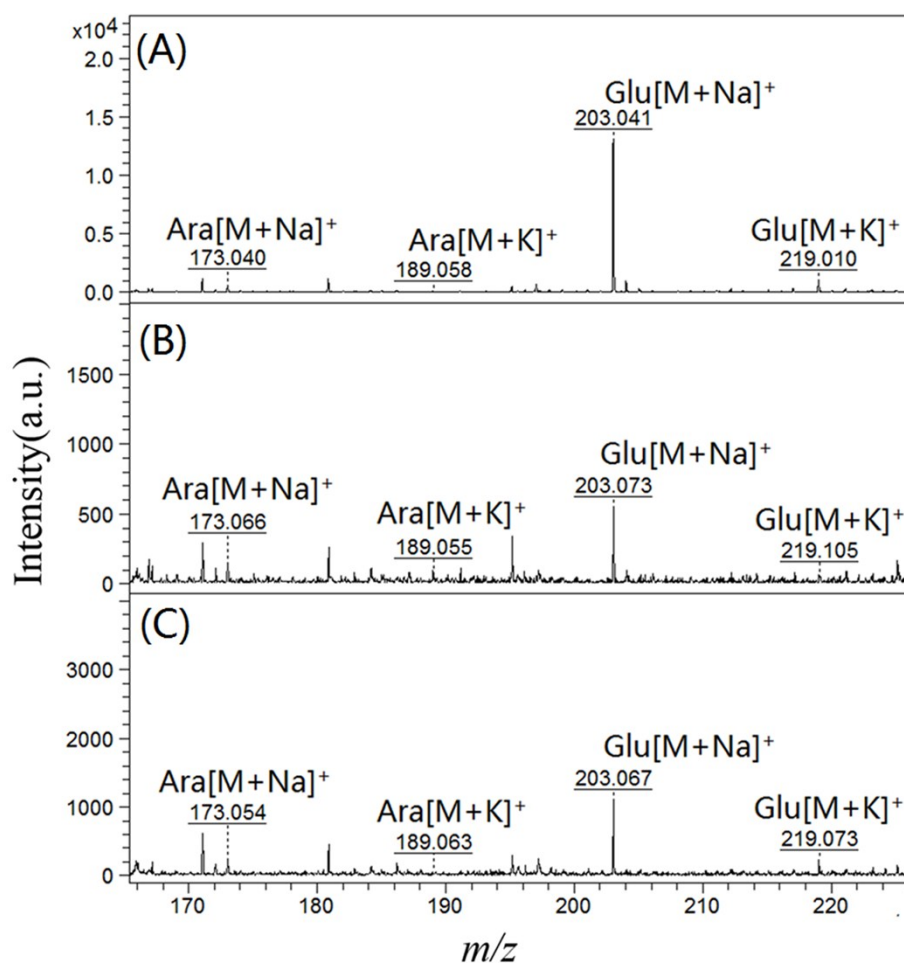


Figure S7. MALDI-TOF spectra for Glu in APS samples with 0.05 mg·mL⁻¹ Ara detected by Fe₃O₄ NPs matrix in positive and reflectron mode. (A) APS-1; (B) APS-4; (C) APS-5.

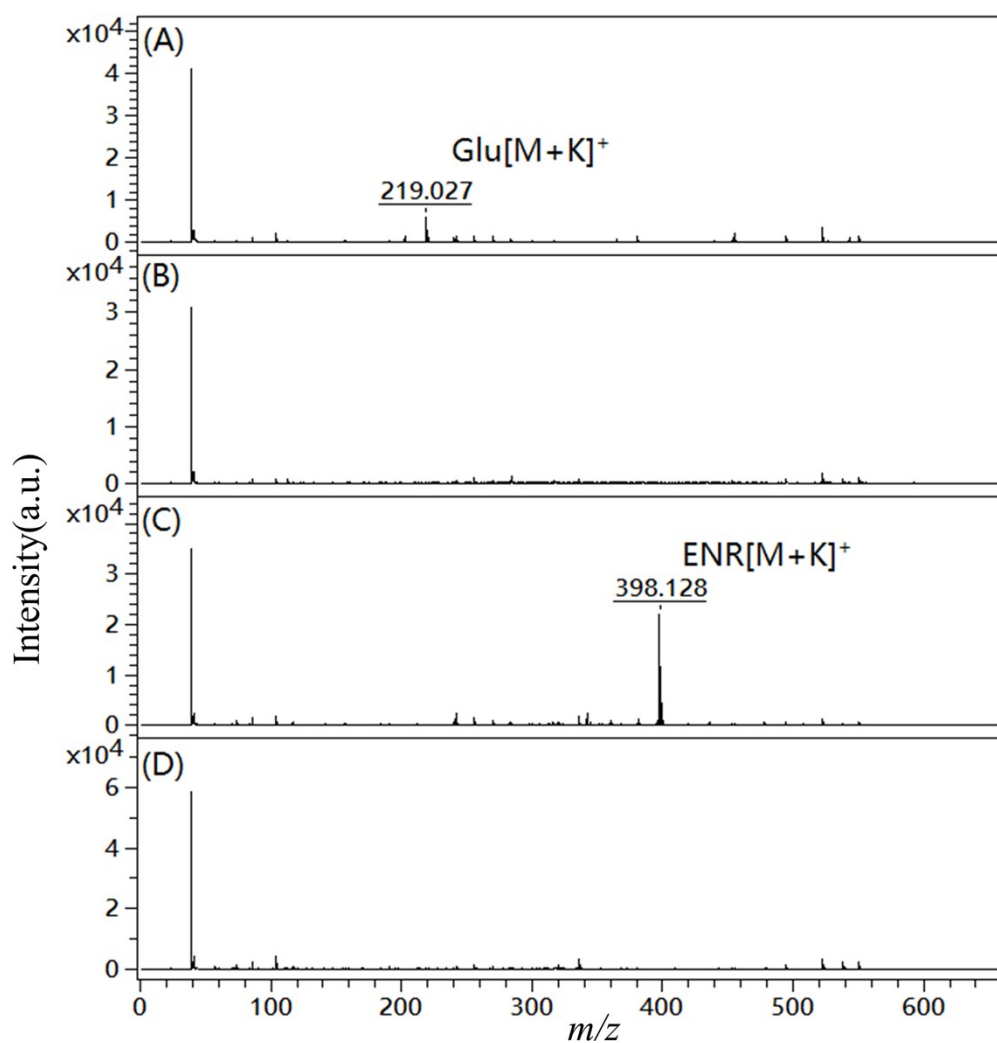


Figure S8. MALDI-TOF spectrums detected by Fe_3O_4 NPs matrix in positive and reflectron mode for four kinds of LNT samples. (A) LNT-1; (B) LNT-2; (C) LNT-3; (D) LNT-4.

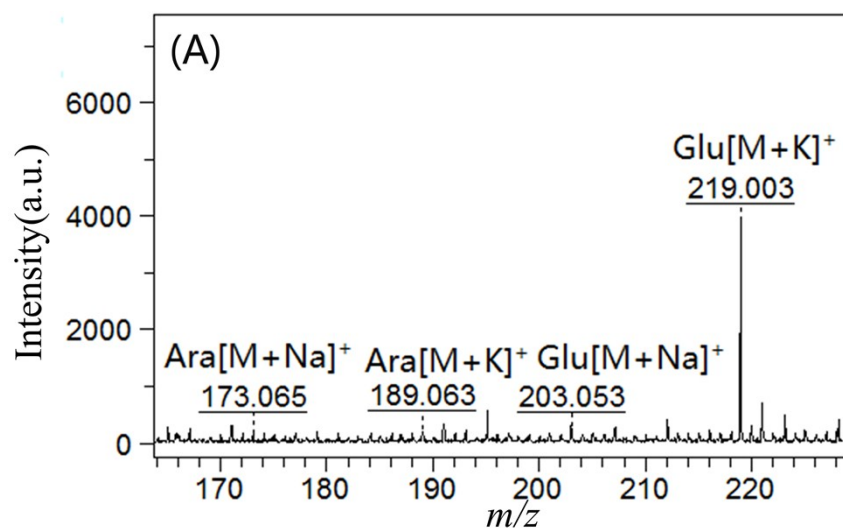


Figure S9. MALDI-TOF spectrum for Glu in sample LNT-1 with 0.05 mg·mL⁻¹ Ara detected by Fe₃O₄ NPs matrix in positive and reflectron mode.

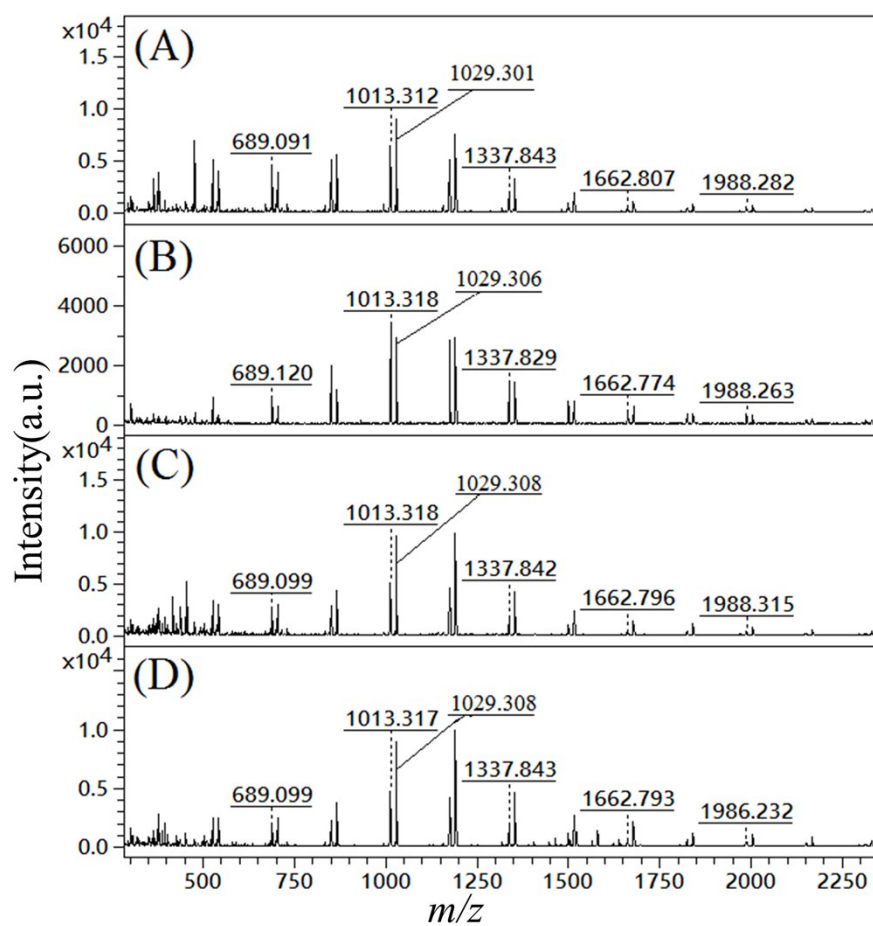


Figure S10. MALDI-TOF spectrums detected by DHB/N-MA matrix in positive and reflectron mode for four kinds of LNT samples. (A) LNT-1; (B) LNT-2; (C) LNT-3; (D) LNT-4.