

Electronic Supplementary Material

for

**Application of trilobal capillary-channeled
polymer (C-CP) fibers for reversed phase liquid
chromatography and ESI-MS for the determination of
proteins in different biological matrices**

Katherine B. Youmans, Lei Wang and R. Kenneth Marcus*

Department of Chemistry

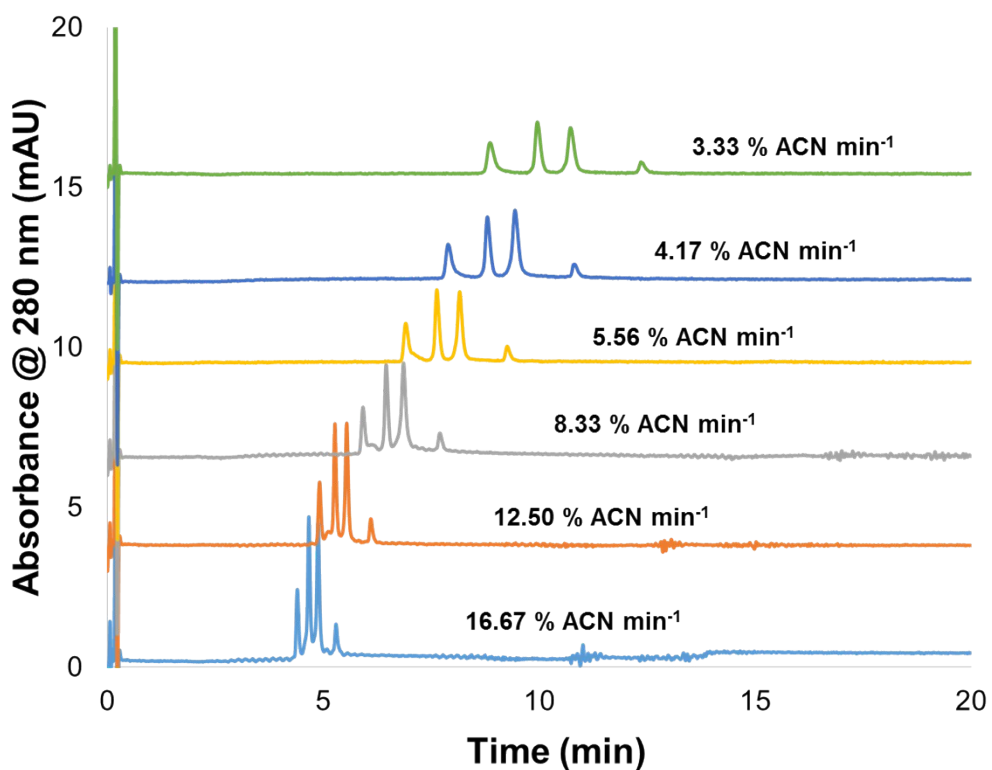
102 Biosystems Research Complex

Clemson University

Clemson, SC 29634

- Author to whom correspondence should be addressed

Submitted for publication in Analytical Methods



ESI Fig.1. Effects of gradient rate on the chromatographic performance of PPY C-CP fiber column. Analytes: ribonuclease A, cytochrome c, lysozyme and myoglobin (20 $\mu\text{g mL}^{-1}$ each, 5 μL injection), mobile phase: 100% H_2O + 1.5% FA to 100% ACN + 1.5% FA, flow rate: 0.4 mL min^{-1} , 280 nm absorbance detection.