

Electronic Supplementary Information (ESI)

Two figures (S1 and S2)

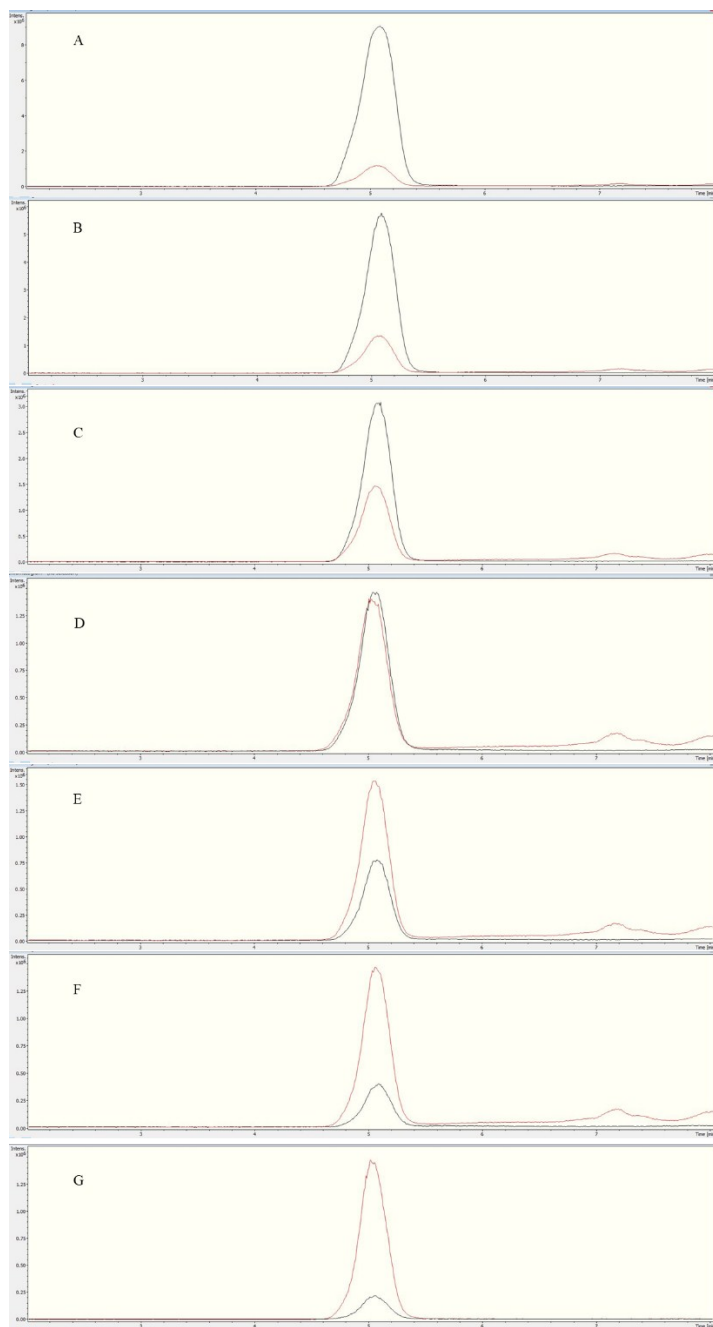


Fig. S1 EIC calibration curve of MDMA (black) using 500 ng/mL MDMA-d₅ (red) at (A) 4.000 µg/mL, (B) 2.000 µg/mL, (C) 1.000 µg/mL, (D) 500.0 ng/mL, (E) 250.0 ng/mL, (F) 125.0 ng/mL, and (G) 62.50 ng/mL.

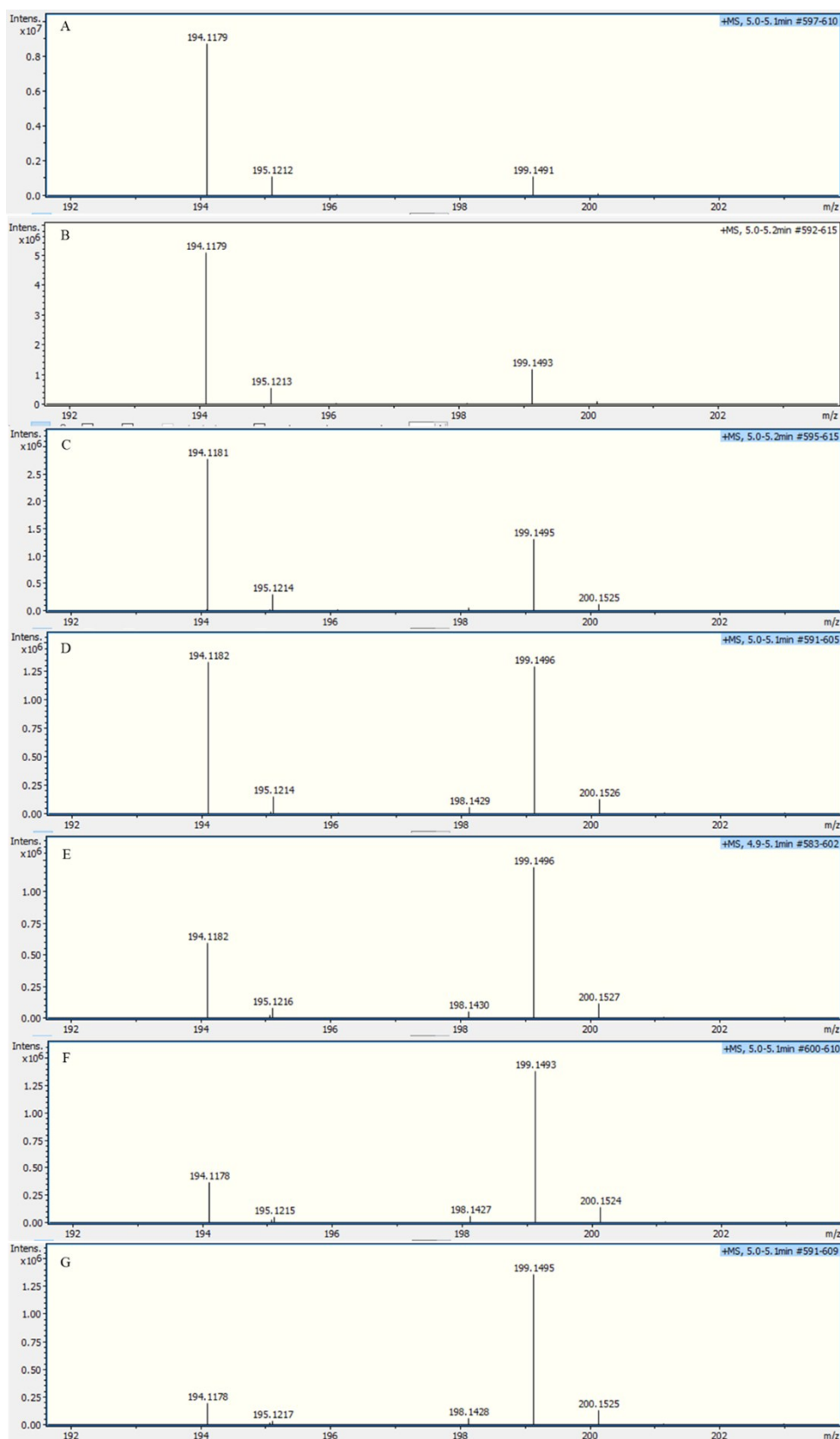


Fig. S2 Compound spectra of the EIC calibration curve of MDMA (194 [M+H]⁺) using 500 ng/mL MDMA-d₅ (199 [M+H]⁺) as IS at (A) 4.000 μg/mL, (B) 2.000 μg/mL, (C) 1.000 μg/mL, (D) 500.0 ng/mL, (E) 250.0 ng/mL, (F) 125.0 ng/mL, and (G) 62.50 ng/mL.