

Electronic supplementary information

SPE cartridges with 3D graphene framework for extraction of triclosan in environmental water

Anderson Thesing^{1,2}, Sílvia Poersch¹, Leonardo F. Medeiros¹, Jacqueline F. Leite Santos^{1,*}, Andreia N. Fernandes^{1,*}

¹Instituto de Química, Universidade Federal do Rio Grande do Sul, Av. Bento Gonçalves, nº 9500, 91501-970, Porto Alegre, Brazil.

²Programa de Pós-graduação em Ciência e Engenharia de Materiais, Universidade Federal de Pelotas, Rua Gomes Carneiro nº 1, 96010-000, Pelotas, Rio Grande do Sul, Brazil.

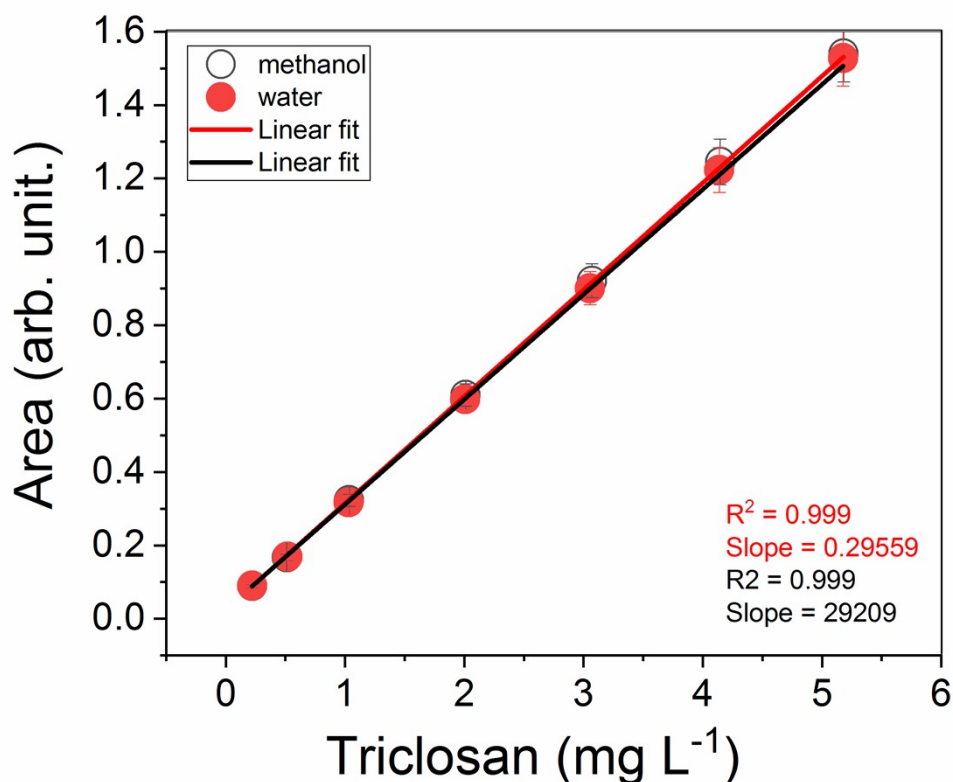


Fig. S1. Analytical curves of triclosan in methanol and surface water matrix (n = 5).

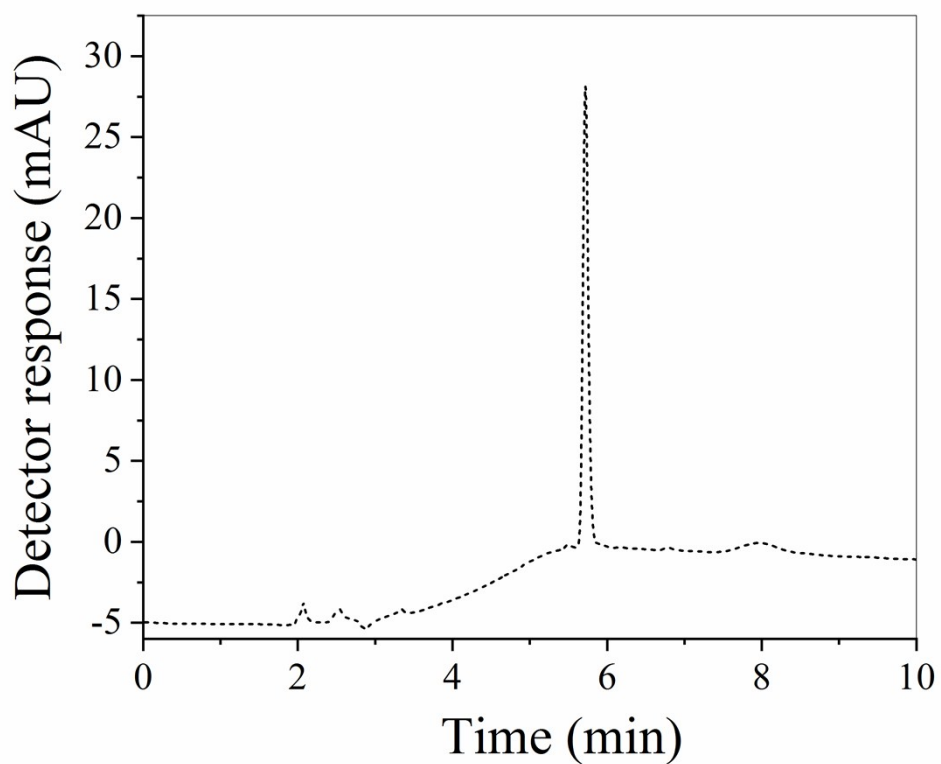


Fig. S2. Chromatogram of the surface water sample collected in Guaíba River spiked with 4.5 mg L⁻¹ of triclosan.