

Supporting information

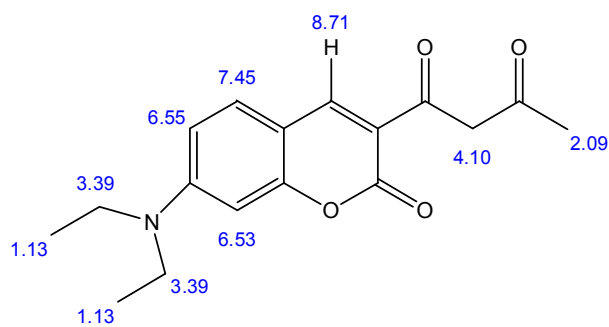


Figure S1 Chemical NMR H-1 estimation of CND.

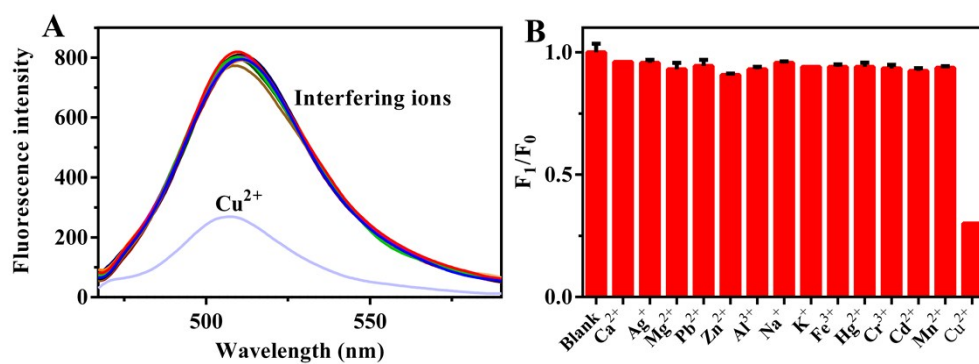


Figure S2 Fluorescence emission spectra of CND in the presence of different metal ions with the concentration of 10.00 μM (Ag^+ , Mg^{2+} , Pb^{2+} , Zn^{2+} , Al^{3+} , Na^+ , K^+ , Fe^{3+} , Hg^{2+} , Cr^{3+} , Cd^{2+} , Mn^{2+} and Cu^{2+}).

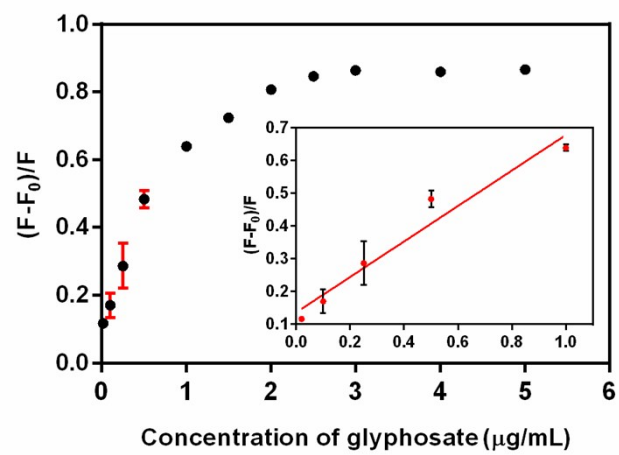


Figure S3 Fluorescence response curve of CND/Cu²⁺ sensor for glyphosate detection using Stern–Volmer equation.

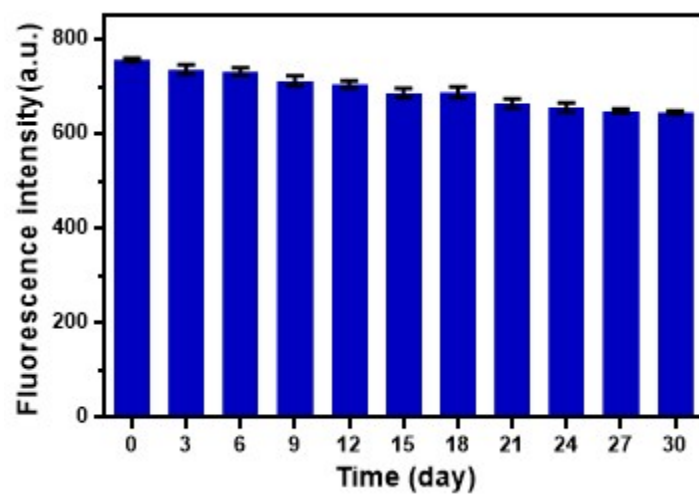


Figure S4 Stability of the as-prepared sensor upon time.