

Supporting information

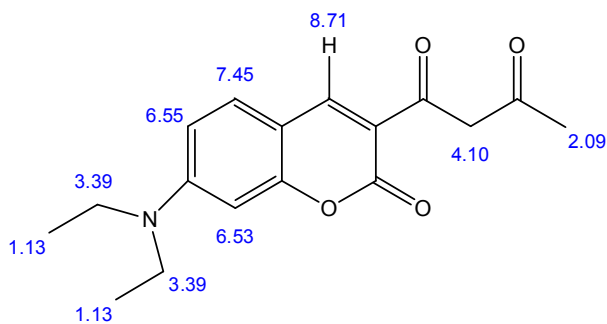


Fig. S1 Chemical NMR H-1 estimation of ADC.

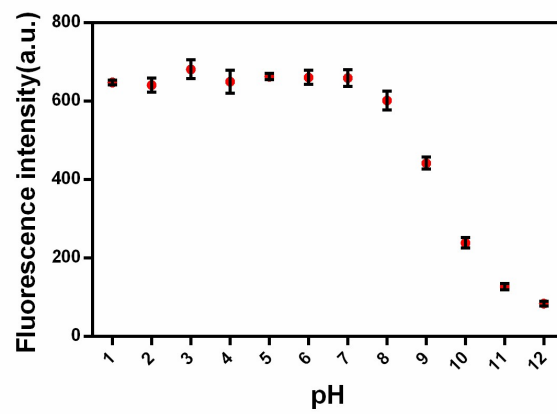


Fig. S2 The dependence of the fluorescence intensity of ADC on pH.

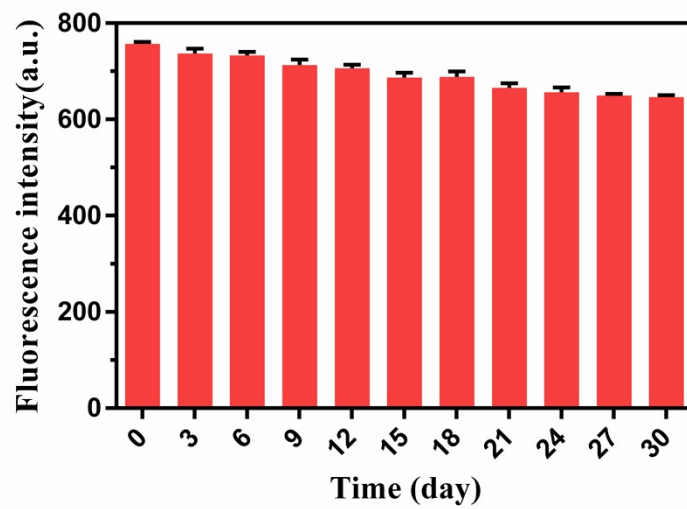


Fig. S3 The stability of the as-prepared sensor upon time.

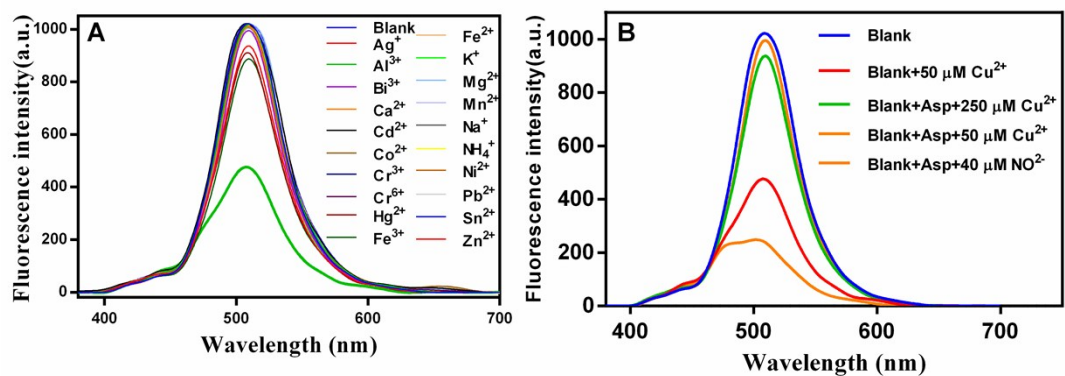


Fig. S4 Fluorescence emission spectra of ADC in the presence of various metal ions (50 μM) (A); The addition of Asp to improve the selectivity of proposed method (B).