

1
2
3
4
5
6
7
8
9
10
11
12
13
14
15
16
17
18
19

SUPPORTING INFORMATION

ULTRA-TRACE DETERMINATION OF DOMOIC ACID IN THE EBRO DELTA ESTUARY BY SPE-HILIC-HRMS

Cristina Bosch-Orea¹, Josep Sanchís^{2,3}, Damià Barceló^{1,2} and Marinella Farré^{1,*}

¹ Water and soil quality research group, Department of Environmental Chemistry, IDAEA-CSIC, Barcelona (Spain)

² Catalan Institute for Water Research (ICRA), Scientific and Technological Park of the University of Girona, H2O Building, C/Emili Grahit, 101, E17003, Girona (Spain)

³ University of Girona, 17071, Girona (Spain).

- Corresponding Author: Marinella Farré mfuqam@cid.csic.es

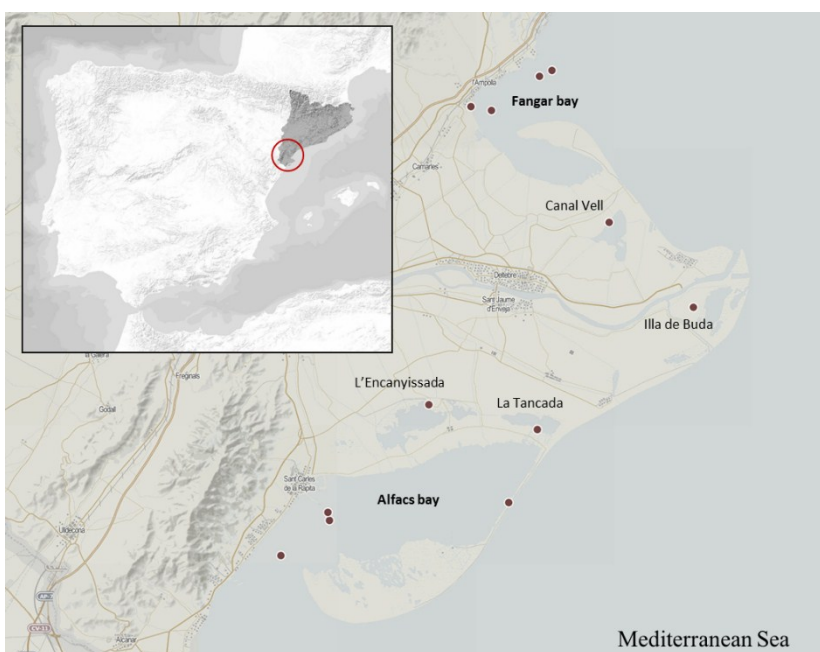
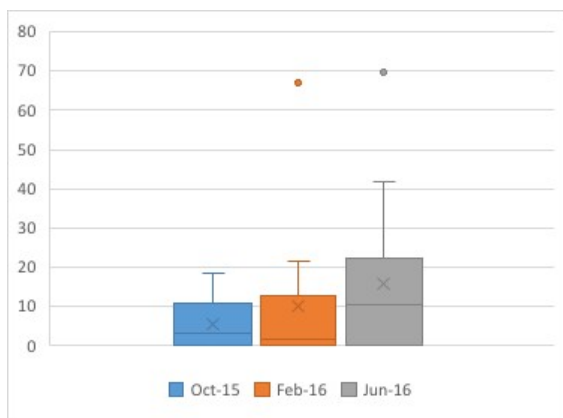


Figure S1. Sampling points in the Ebro's delta estuary for the three campaigns.



20

21 **Figure S2.** Box-and whisker plot for the three campaigns.

22

23

24

25

26

27

28

29 **Table S1.** Geographic coordinates expressed in decimal degrees (DD) of the sampling
 30 points along the Ebro's river delta.

		Location	Origin	GPS coordinates (DD)
Coastal area	1	Alfacs bay	Beach	40.610015, 0.724525
	2		Shore	40.601432, 0.610270
	3		Open sea	40.584421, 0.579456
	4		Open sea	40.605240, 0.609279
	5	Fangar bay	Beach	40.800592, 0.700231
	6		Shore	40.798693, 0.713269
	7		Open sea	40.815106, 0.743906
	8		Open sea	40.817899, 0.751861
Lagoons	9	La Tancada	Middle of lagoon	40.645143, 0.742599
	10	Illa de buda	Middle of lagoon	40.703963, 0.841655
	11	L'Encanyissada	Shore of lagoon	40.657110, 0.673552
	12	Canal Vell	Shore of lagoon	40.745011, 0.788320

31

32

33

35 **Table S2.** Physic-chemical parameters measured at each point during the sampling.

	Temperature (°C)			pH			Conductivity (uS/cm)		
	Oct-15	Feb-16	Jun-16	Oct-15	Feb-16	Jun-16	Oct-15	Feb-16	Jun-16
1	17.3	-	29.1	7.6	-	7.83	35971	-	51104
2	-	7.78	29.3	-	7.85	7.83	-	37256	51015
3	19.2	12.2	29.3	7.78	7.85	7.9	45332	39462	50946
4	-	12.6	28.1	-	7.84	7.36	-	40346	51207
5	20.4	12.8	32.8	7.78	7.83	8.16	47732	40073	46286
6	17.9	12	26.7	7.75	7.81	7.82	41647	40554	41752
7	19.9	12.5	26.7	7.75	7.65	7.57	48564	40719	45335
8	-	12.6	25.9	-	7.74	7.41	-	40892	50119
9	17.3	14	28.9	8.32	7.78	8.14	32423	40227	47068
10	13.2	20.3	25.5	7.75	8.23	8.29	14978	7713	8560
11	10.1	18.7	24.5	7.5	8.48	8.01	21800	44222	35990
12	16.9	17.3	27.5	8.14	8.42	8.08	27426	32431	20725