

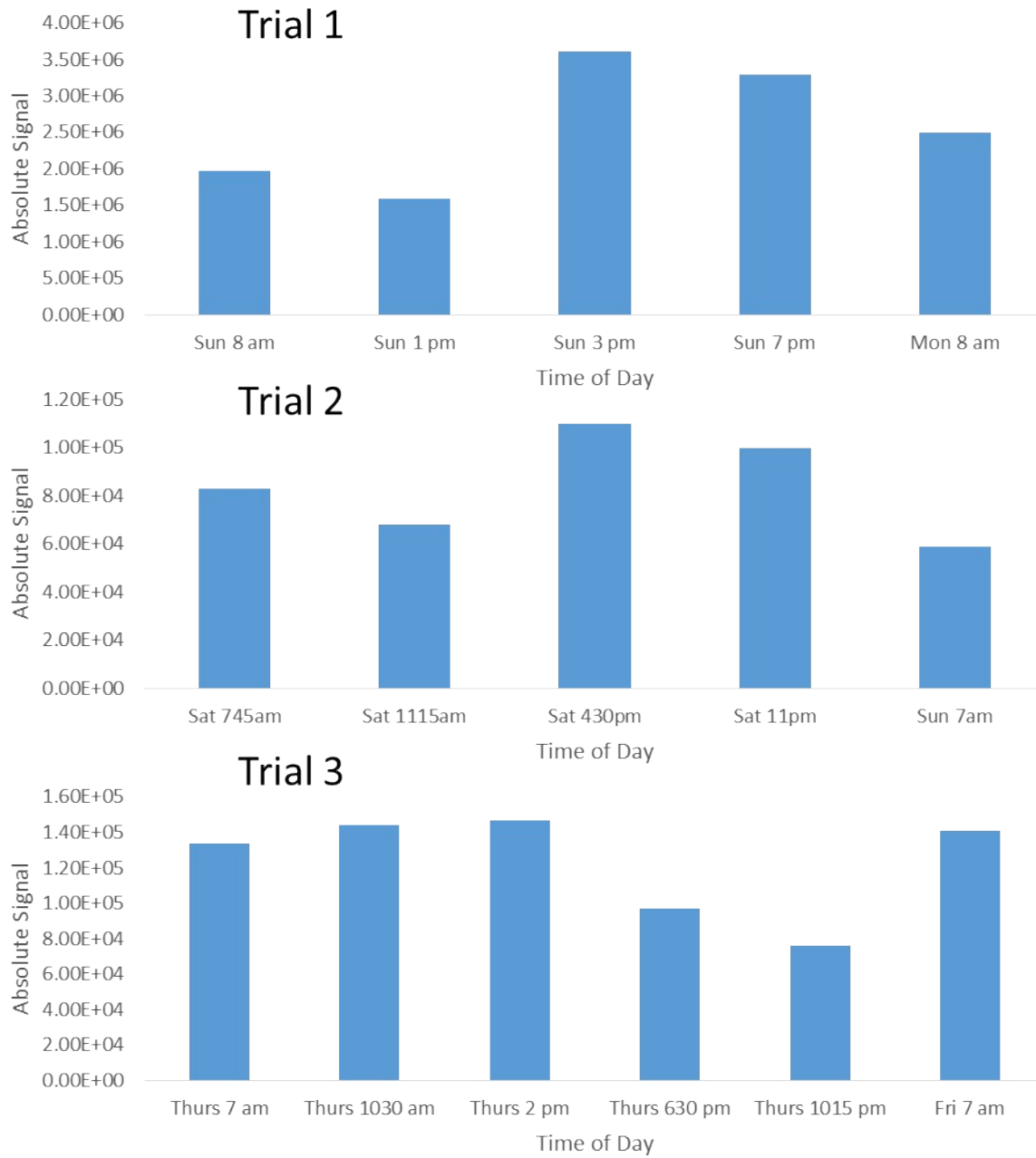
**Supplementary Information**

Triacylglycerol Profiles in Latent Fingerprints Reveal Individual Diet,  
Exercise, and Health Information for Forensic Evidence

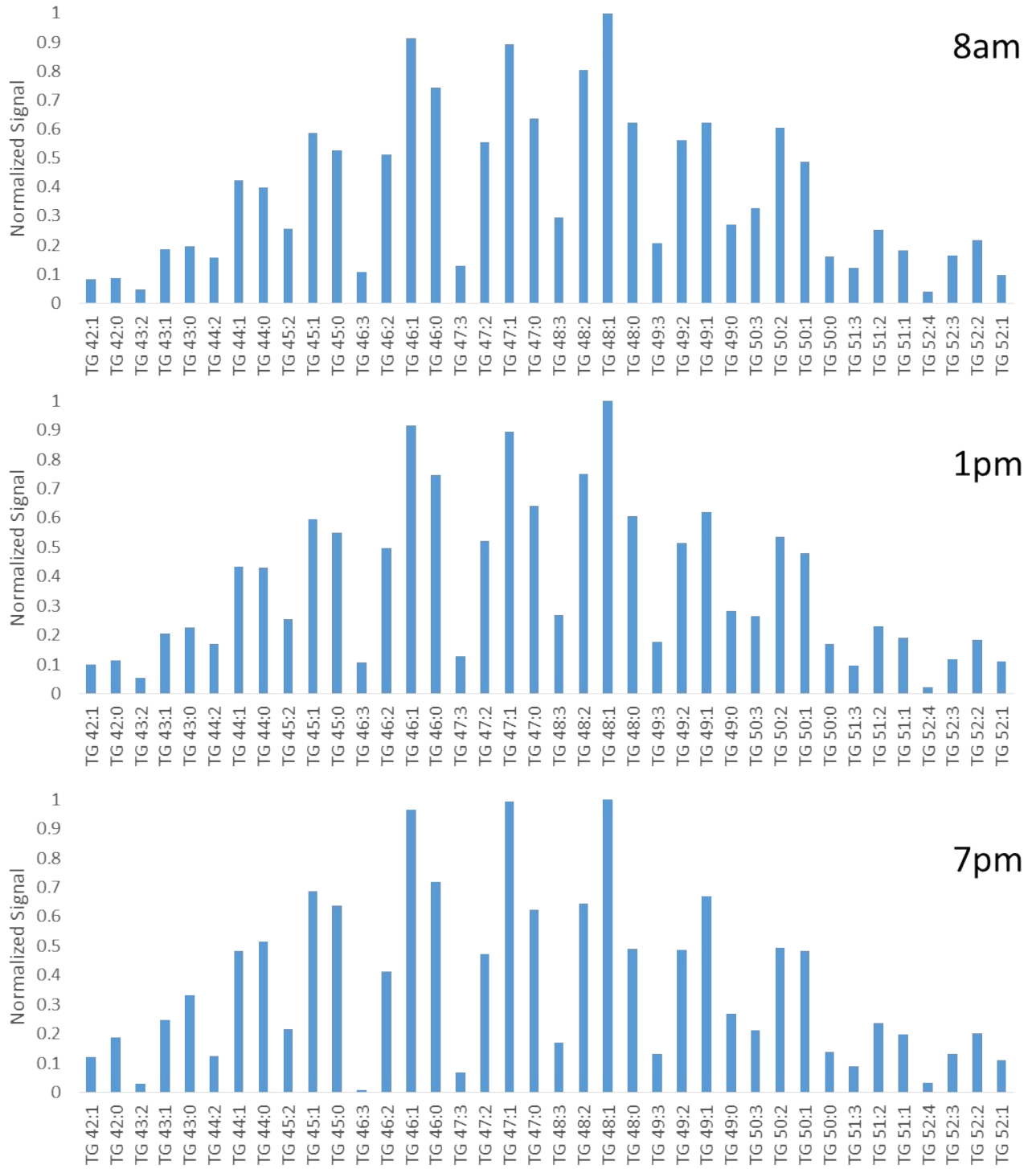
Kelly C. O'Neill, Paige Hinnert, and Young Jin Lee\*

Iowa State University, Department of Chemistry, Ames, IA, 50011

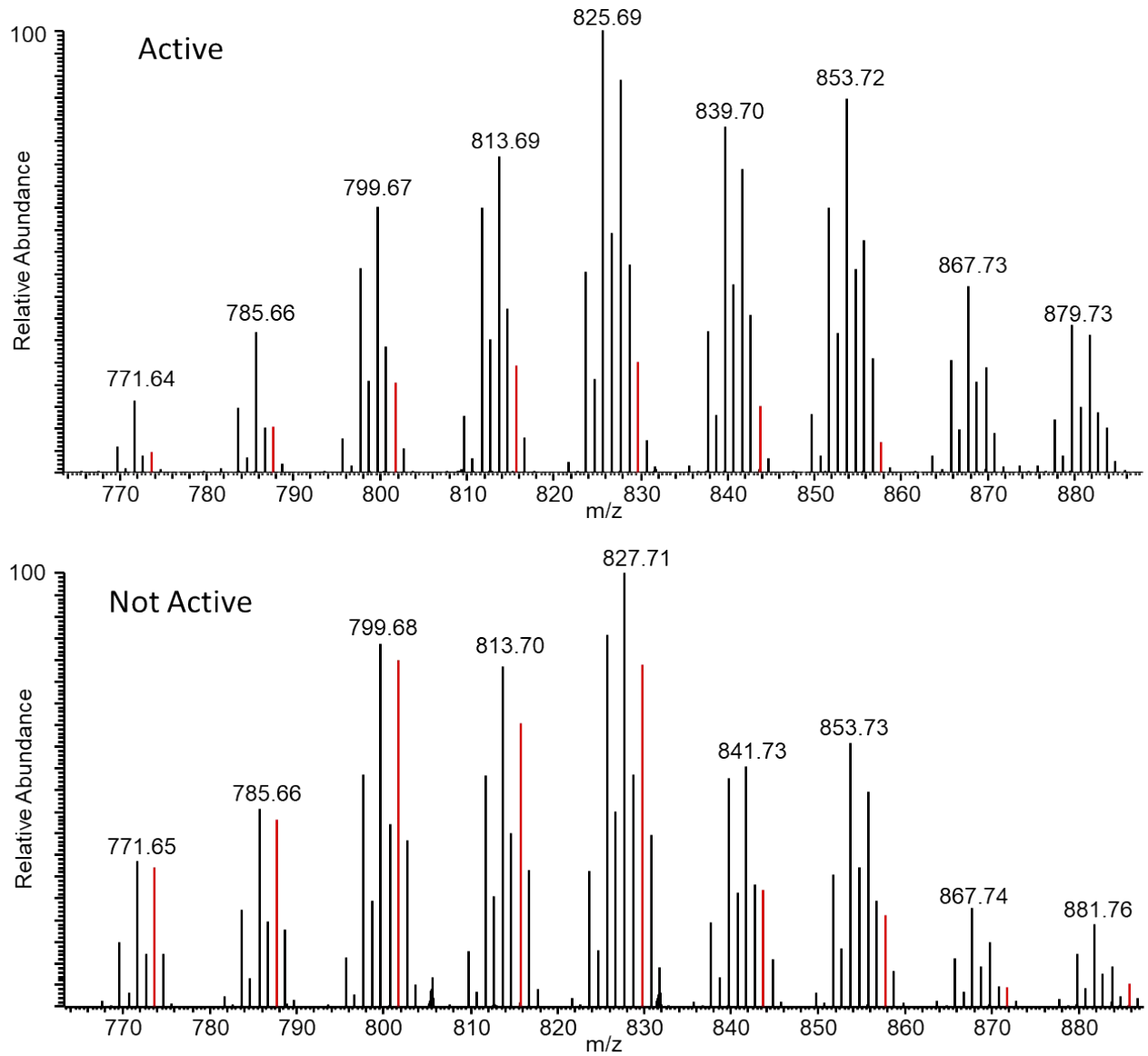
\* To whom correspondence should be addressed. E-mail: [yjlee@iastate.edu](mailto:yjlee@iastate.edu)



**Supplementary Figure 1.** Three trials showing the fluctuation in signal for TG 48:1 level at various time points throughout the day.



**Supplementary Figure 2.** Normalized TG profile from a single donor at different time points throughout the day.



**Supplementary Figure 3.** Representative TG profiles from one active and one non-active male individual. Saturated TGs are marked in red.