

ARTICLE

## Biomimetic Proteoglycan Nanoparticles for Growth Factor Immobilization and Delivery

Nooshin Zandi<sup>a,b</sup>, Ebrahim Mostafavi<sup>b</sup>, Mohammad Ali Shokrgozar<sup>c</sup>, Elnaz Tamjid<sup>d</sup>, Thomas. J. Webster<sup>b</sup>, Nasim Annabi<sup>\*e,f,g</sup> and Abdolreza Simchi<sup>\*a,h</sup>

Received 00th January 20xx,  
Accepted 00th January 20xx

DOI: 10.1039/x0xx00000x

---

*Author information*

<sup>a</sup> Institute for Nanoscience and Nanotechnology, Sharif University of Technology, P.O. Box 11365-11155, Tehran.

<sup>b</sup> Department of Chemical Engineering, Northeastern University, Boston, MA, USA †  
Footnotes relating to the title and/or authors should appear here.

<sup>c</sup> National Cell Bank Department, Pasteur Institute of Iran, Tehran 13164, Iran.

<sup>d</sup> Department of Nanobiotechnology, Faculty of Biological Sciences Tarbiat Modares University, P.O. Box 14115-175, Tehran, Iran.

<sup>e</sup> Department of Chemical and Biomolecular Engineering, University of California-Los Angeles, Los Angeles, California 90095, USA.

<sup>f</sup> Center for Minimally Invasive Therapeutics (C-MIT), California NanoSystems

<sup>g</sup> Institute (CNSI), University of California – Los Angeles, 570 Westwood Plaza, Los Angeles, CA 90095, USA.

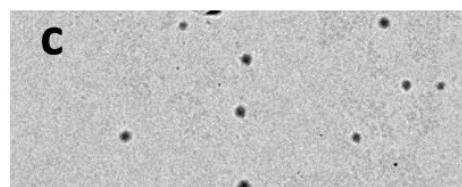
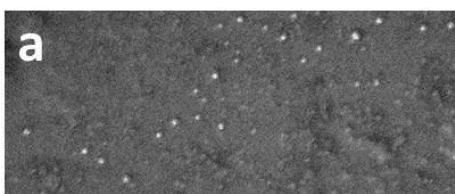
<sup>h</sup> Harvard-MIT Division of Health Sciences and Technology, Massachusetts Institute of Technology, Cambridge, MA 02139, USA.

<sup>\*</sup> Department of Materials Science and Engineering, Sharif University of Technology, P.O. Box 11365-11155, Tehran, Iran.

\* Address correspondence to:

Nasim Annabi, Tel: (310) 267-5927; E-mail: [nannabi@UCLA.edu](mailto:nannabi@UCLA.edu)

Abdolreza Simchi, Tel: +98 (21) 6616; E-mail: [simchi@sharif.edu](mailto:simchi@sharif.edu)



**Figure S1.** Representative scanning electron microscopy (SEM) images of (a) DS-PLL-VEGF (b) and GT-PLL-VEGF NPs. Representative transmission electron microscopy (TEM) images of (e) DS-PLL-VEGF and (f) GT-PLL-VEGF NPs