

Supplemental Information

Noninvasive Monitoring of the Development and Treatment Response of Ischemic Hindlimb by Targeting Matrix Metalloproteinase-2 (MMP-2)

Zhongchan Sun^{1,2,†}, Nan Ma^{3,†}, Wensi Fan², Lanyan Guo², Jiangwei Chen²,

Lei Zhu^{4,*}, Guang Tong^{5,*}

1. Department of Cardiology, Guangdong Cardiovascular Institute, Guangdong Provincial Key Laboratory of South China Structural Heart Disease, Guangdong Provincial People's Hospital, Guangdong Academy of Medical Sciences, Guangzhou, Guangdong, 510080, China
2. Department of Cardiology, Xijing Hospital, Fourth Military Medical University, Xi'an, 710000 China;
3. Department of Ophthalmology, Tangdu Hospital, Fourth Military Medical University, Xi'an, 710000 China;
4. Winship Cancer Institute, Department of Surgery, Emory University School of Medicine, Atlanta, GA 30322 US;
5. Department of Cardiac Surgery, Guangdong Cardiovascular Institute, Guangdong Provincial Key Laboratory of South China Structural Heart Disease, Guangdong Provincial People's Hospital, Guangdong Academy of Medical Sciences, Guangzhou, Guangdong, 510080 China.

[†]Zhongchan Sun and Nan Ma contributed equally to this article.

*To whom correspondence should be addressed. Tel: +862083827812; Fax: +86 2083875453.

E-mail: guangrabbittong@gmail.com (G.T.) and zeh.ray82@gmail.com (L.Z.)

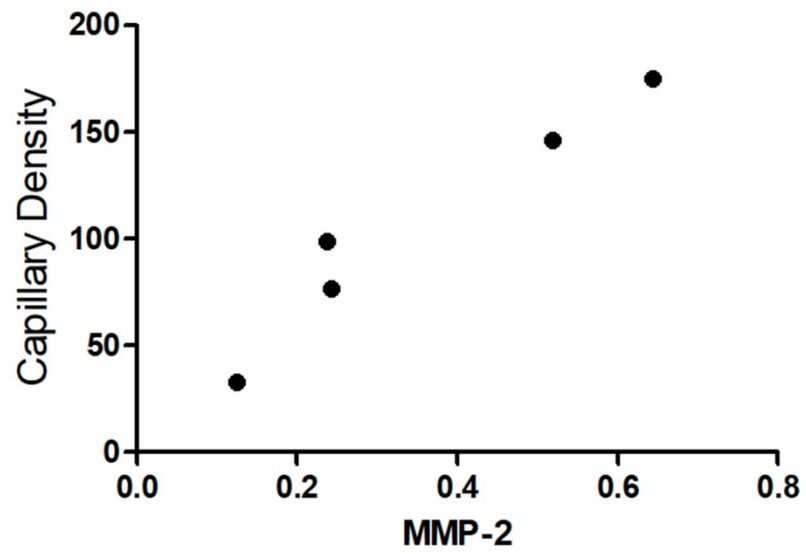


Figure S1. The MMP-2 expression (mean of 5 samples) is correlated with capillary numbers (mean of 5 samples) as determined by western blot. ($P < 0.05$ by Pearson correlation test).

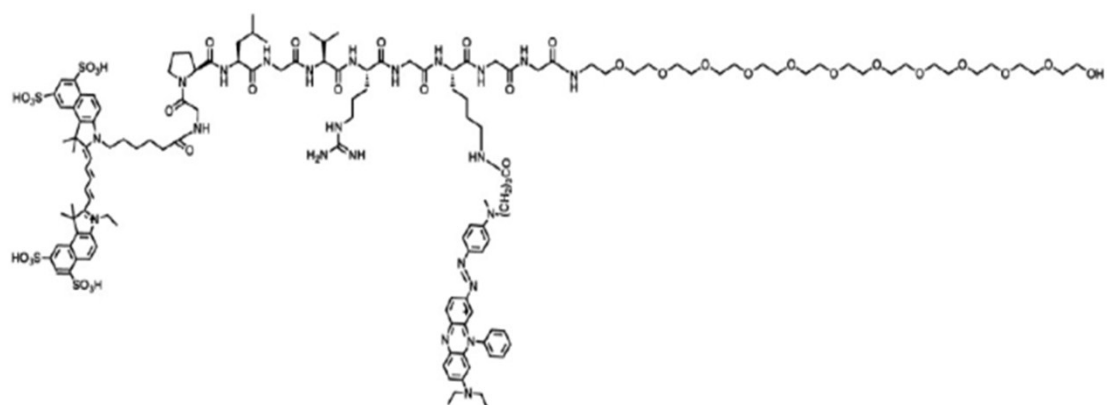


Figure S2. Chemical structure of MMP-P12.

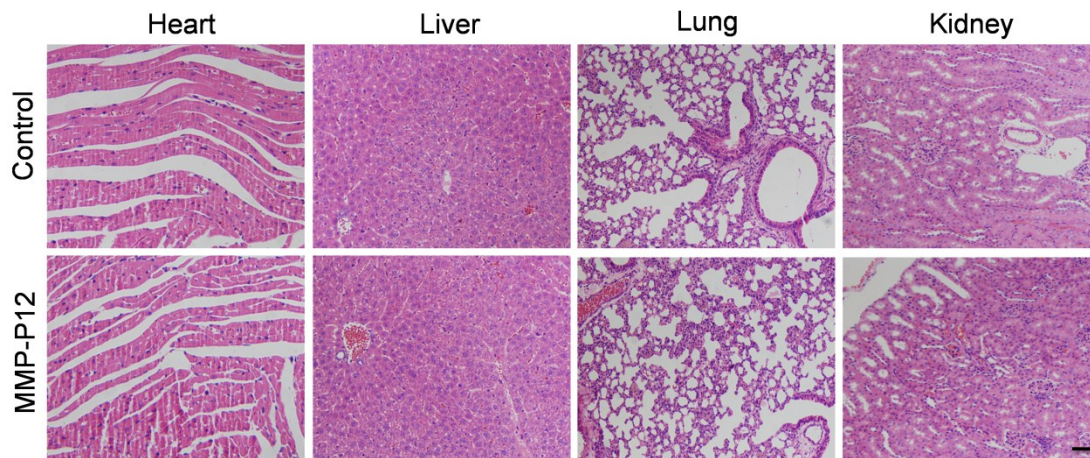


Figure S3. H&E stained images of major organs (heart, liver, lung and kidney), harvested from mice 24 hours after injection with/without MMP-P12. Scale bar: 200 μ m.