

Polydopamine modification of silk fibroin membranes significantly promotes their wound healing effect

Supplementary Material

Table S1 Survey-wide XPS spectrum measurement result of the ESF and PESF membrane after being washed by water for 7 days.

Surface composition	C1s(%)	N1s(%)	O1s(%)	N/C
ESF	75.56	18.41	6.03	0.244
PESF	77.58	14.75	7.76	0.190

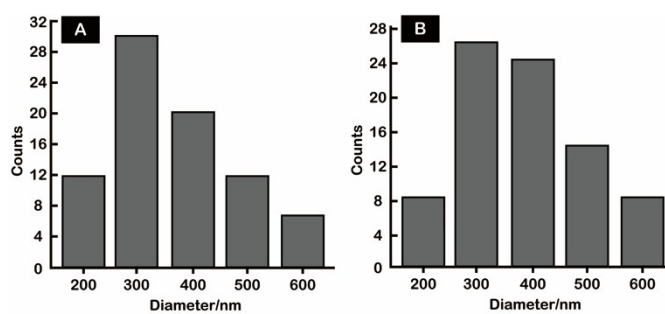


Figure S1 The diameter distribution of ESF (A, N=80 Mean= 437.1±130.9) and PESF membrane (B, N=80 Mean= 447.6±108.2).

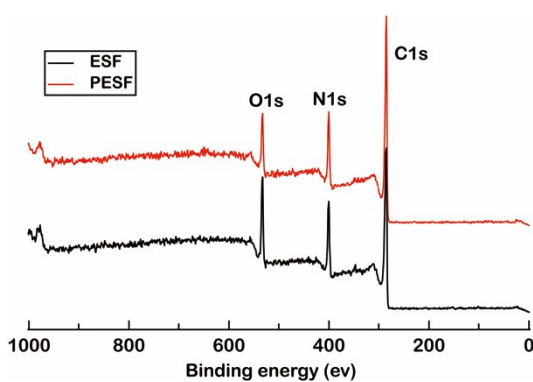


Figure S2 XPS spectra of the ESF and PESF membrane.

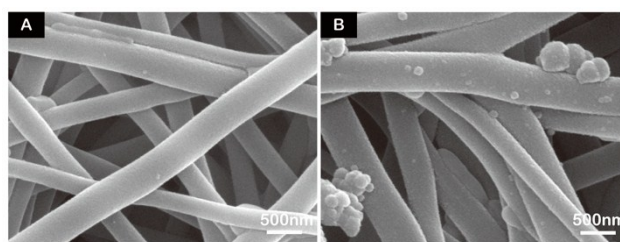


Figure S3 Morphology of the ESF (A) and PESF membrane (B) after being washed by water for 7 days.

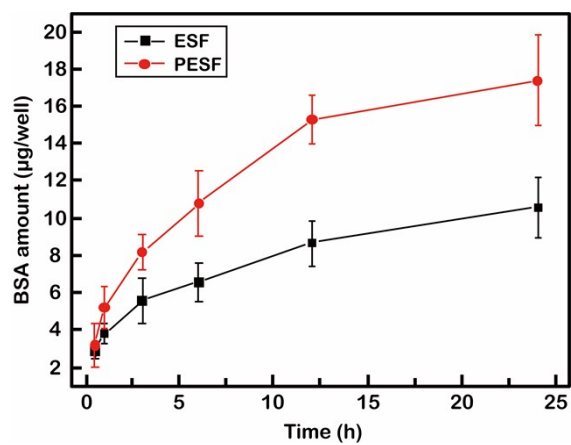


Figure S4 Immobilization of BSA on the ESF and PESF membrane.