

Supporting Information

A triple chain polycationic peptide-mimicking amphiphile – Efficient DNA-transfer without co-lipids

Shashank Reddy Pinnapireddy^{‡,a}, Julia Giselbrecht^{‡,b}, Boris Strehlow,^a Christopher Janich,^a Annette Meister,^c Harald Loppnow,^d Daniel Sedding,^d Frank Erdmann,^e Gerd Hause,^f Gerald Brezesinski,^g Thomas Groth,^h Andreas Langner,^b Udo Bakowsky,^{a*} and Christian Wölk^{b*}

[‡] These authors contributed equally to this work.

^a Department of Pharmaceutics and Biopharmaceutics, University of Marburg, Robert-Koch-Str. 4, 35037, Marburg, Germany

^b Martin Luther University Halle-Wittenberg, Institute of Pharmacy, Department of Medicinal Chemistry, Wolfgang-Langenbeck-Str. 4, 06120 Halle (Saale), Germany

^c Martin Luther University Halle-Wittenberg, Institute of Biochemistry and Biotechnology, Kurt-Mothes-Str. 3a, 06120 Halle, Germany

^d Internal Medicine III, Medical Faculty of Martin Luther University Halle-Wittenberg, Ernst-Grube-Straße 40, 06120 Halle (Saale), Germany

^e Martin Luther University Halle-Wittenberg, Institute of Pharmacy, Department of Pharmacology, Wolfgang-Langenbeck-Str. 4, 06120 Halle (Saale), Germany

^f Martin Luther University Halle-Wittenberg, Biocenter, Weinbergweg 22, 06120 Halle, Germany

^g Max Planck Institute of Colloids and Interfaces, Science Park Potsdam-Golm, Am Mühlentberg 1, 14476 Potsdam, Germany

^h Martin Luther University Halle-Wittenberg, Institute of Pharmacy, Department Biomedical Materials, Heinrich-Damerow-Str. 4, 06120 Halle (Saale), Germany

*Corresponding Authors

e-mail: christian.woelk@pharmazie.uni-halle.de (CW)

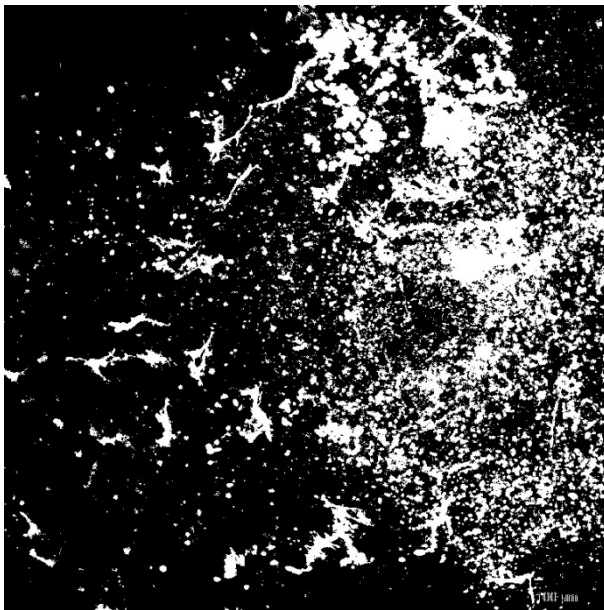
UBakowsky@aol.com (UB)

S1 Relative Area Calculation

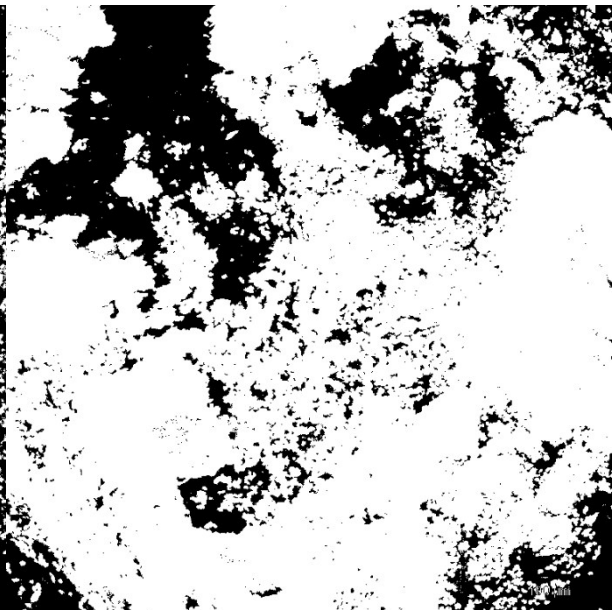
Relative area was calculated from 1.25x1.25 mm images of CAM after mesodermal injection. The investigated area is the area around the point of injection. The calculations were made with Fiji [1] from images with the same adjusted threshold of a lower threshold level (Min-Thr) of 29 and an upper threshold level (Max-Thr) of 219.

	Time	Area	%Area	Min-Thr	Max-Thr
DiTT4	4h	127215	21.568	29	219
DiTT4	24h	443028	75.112	29	219
Lipofectamine 2000	4h	167	0.028	29	219
Lipofectamine 2000	24h	18896	3.204	29	219

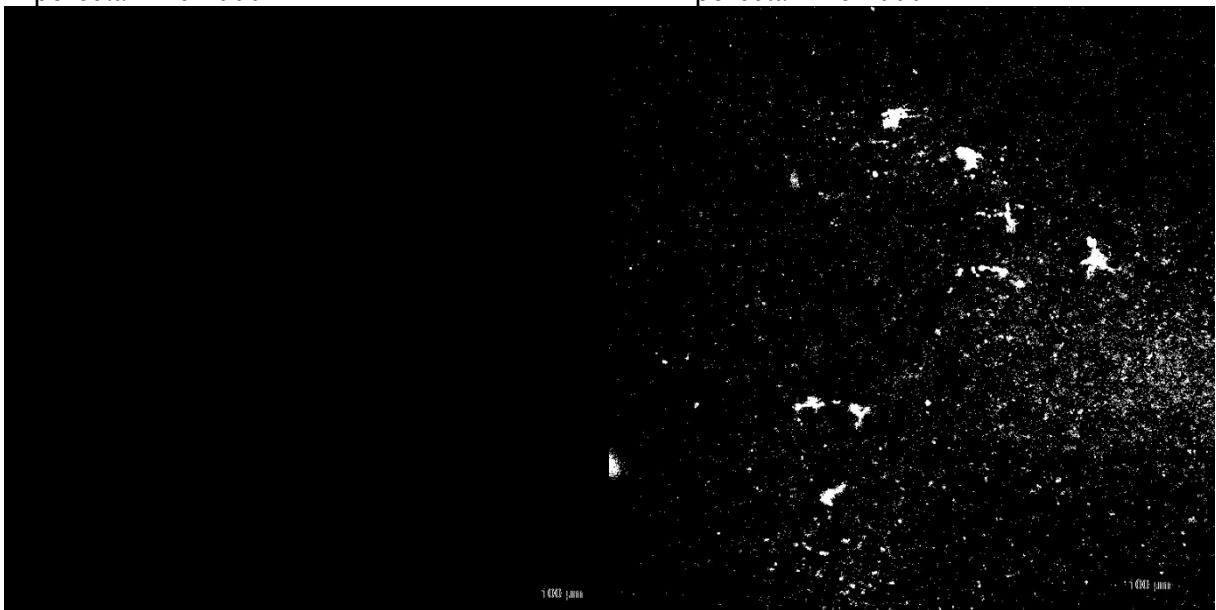
DiTT4 4h



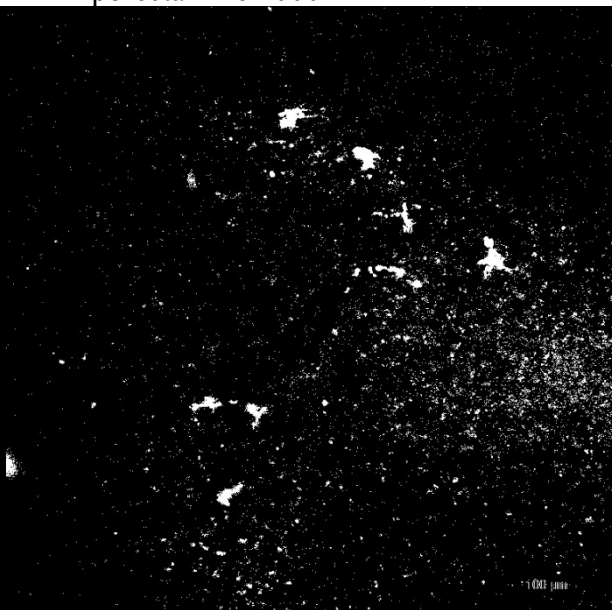
DiTT4 24h



Lipofectamine 2000 4h

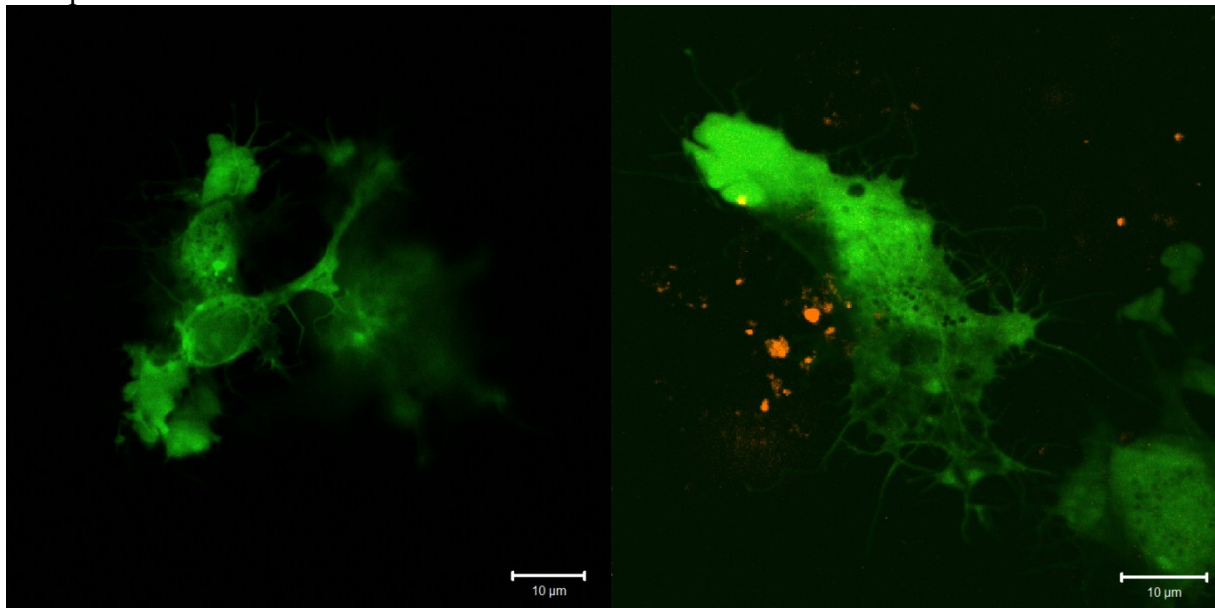


Lipofectamine 2000 24h



S2 Additional CLSM images of mesodermal cells 4h after injection

CLSM micrographs of mesodermal cells 4h after transfection with DNA loaded DiTT4 nanoparticles at N/P 4 4h after administration.



References:

[1] Schindelin, J.; Arganda-Carreras, I. & Frise, E. et al. (2012), "Fiji: an open-source platform for biological-image analysis", *Nature methods* 9(7): 676-682, PMID 22743772, doi:10.1038/nmeth.2019