

Supporting Information

Ultra-fast and universal detection of Gram-negative bacteria in complex samples based on colistin derivatives

Jea Sung Ryu¹, San Hae Im², Yoo Kyung Kang², Yang Soo Kim³, Hyun Jung Chung^{1,2*}

¹Graduate School of Nanoscience and Technology, Korea Advanced Institute of Science and Technology, Daejeon, Republic of Korea

²Department of Biological Sciences, Korea Advanced Institute of Science and Technology, Daejeon, Republic of Korea

³Division of Infectious Diseases, Asan Medical Center, University of Ulsan College of Medicine, Seoul, Republic of Korea

***Corresponding author:**

Hyun Jung Chung, Ph.D.

Email: hyunjc@kaist.ac.kr

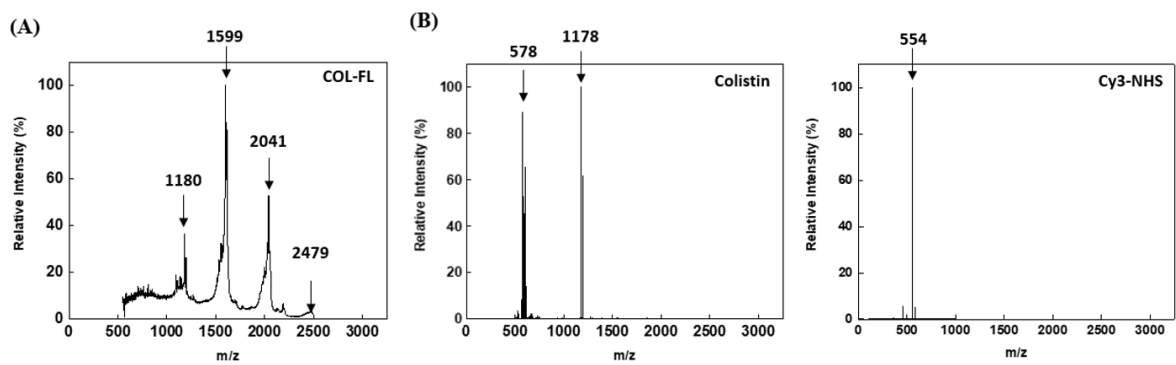


Figure S1. Characterization of COL-FL by mass spectrometry. (A) MALDI-MS of COL-FL. (B) MS/MS data of native colistin (left) and Cy3-NHS (right).

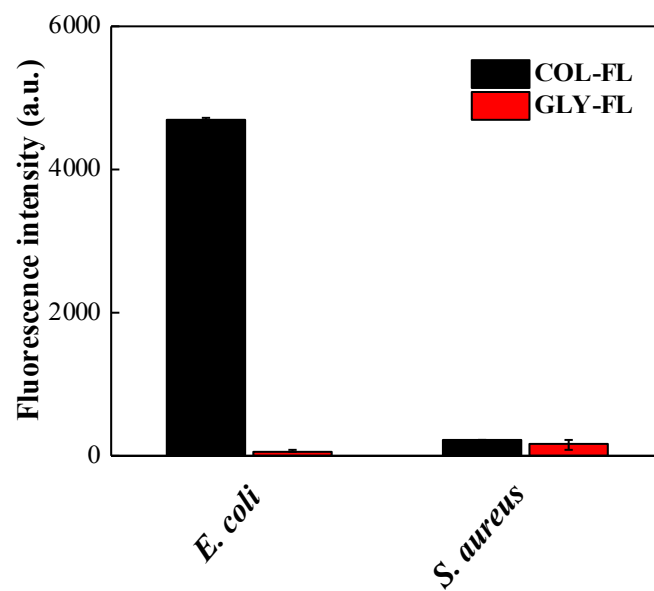


Figure S2. Assay results using COL-FL or the control conjugates (GLY-COL). Bacteria were added with the conjugates at a concentration of 1 μ M and incubated for 10 min.