

Electronic Supplementary Information (ESI) for CrystEngComm

## Structural Design of Alkali-Metal Titanates: Electrochemical Growth of $K_xTi_8O_{16}$ , $Na_{2+x}Ti_6O_{13}$ , and $Li_{2+x}Ti_3O_7$ Single Crystals with One-Dimensional Tunnel Structures

Yusuke Chiba, Daisuke Koizumi, Miwa Saito, and Teruki Motohashi<sup>□</sup>

*Department of Materials and Life Chemistry, Faculty of Engineering, Kanagawa University, Yokohama, Kanagawa 221-8686, Japan*

### **Table of contents**

**Fig. S1.** (a) Optical microscopic image and (b) XRD pattern of the  $K_{2+x}Ti_6O_{13}$  crystals grown with  $V = -0.85$  V. (c) Schematic illustration of the structure of  $K_{2+x}Ti_6O_{13}$  viewed from the  $b$ -axis direction.

**Fig. S2.** EDX mapping images of the  $K_xTi_8O_{16}$  crystals grown with (a)  $V = -0.6$  V and (b)  $-0.85$  V.

**Fig. S3.** EDX mapping images of the  $Na_{2+x}Ti_6O_{13}$  crystal grown with  $V = -0.75$  V.

**Fig. S4.** Optical microscopic image of the  $Li_{4+x}Ti_5O_{12}$  crystals grown with  $V = -0.65$  V.

**Fig. S5.** Optical microscopic image of the mixture mainly consisting of layered Li–Mo–O compounds grown with  $V = -0.7$  V.

**Fig. S6.** XRD pattern for the  $Li_{4+x}Ti_5O_{12}$  crystals grown with  $V = -0.65$  V.

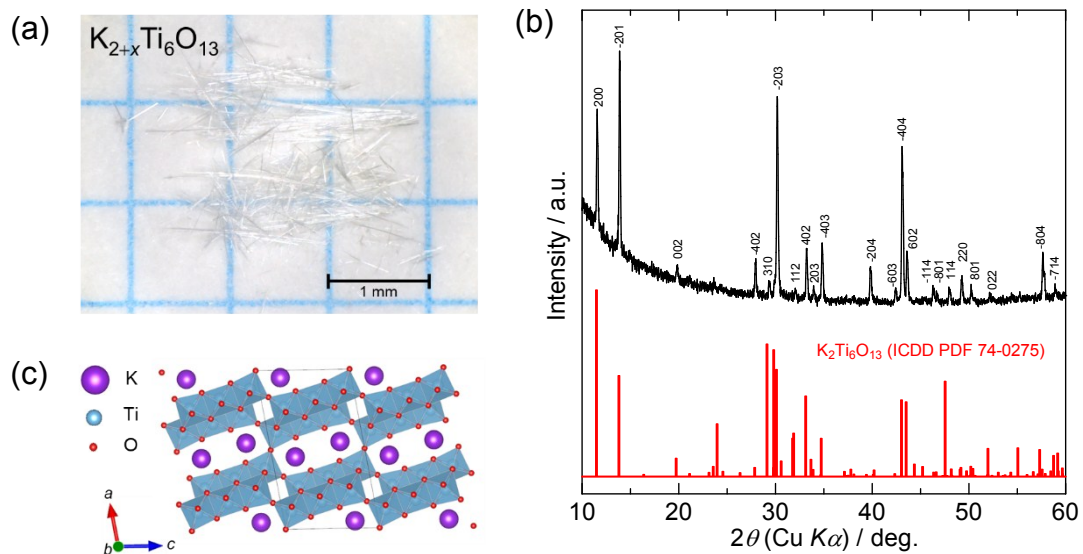
**Fig. S7.** XRD pattern for the mixture of layered Li–Mo–O compounds grown with  $V = -0.7$  V.

**Fig. S8.** EDX mapping images of the  $Li_{2+x}Ti_3O_7$  crystal grown with  $V = -0.4$  V.

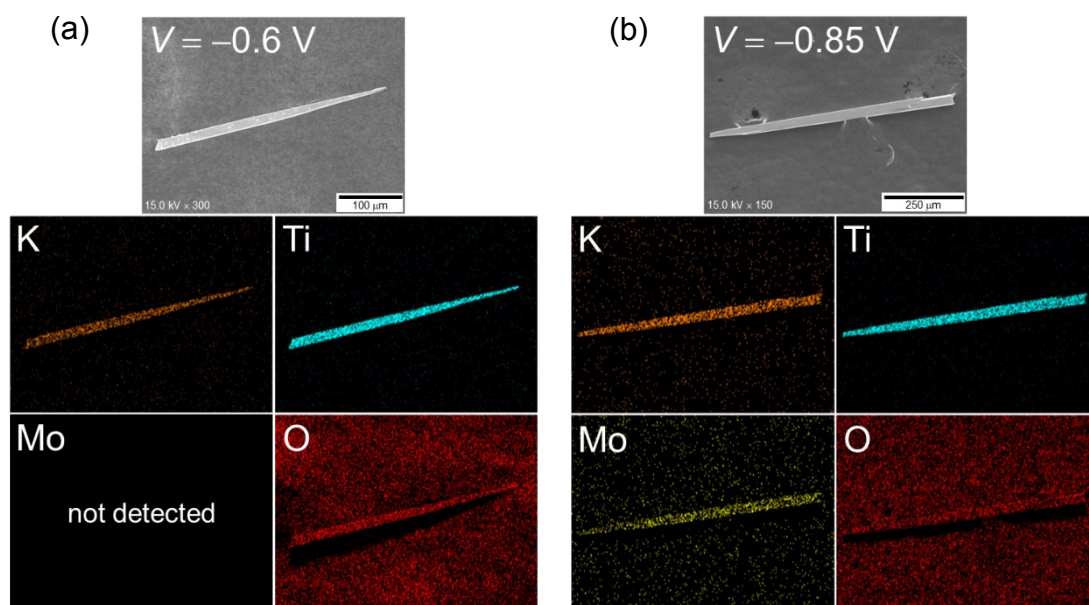
**Fig. S9.** EDX mapping images of the  $Li_{4+x}Ti_5O_{12}$  crystal grown with  $V = -0.65$  V.

<sup>□</sup>Corresponding author. Department of Materials and Life Chemistry, Kanagawa University, 3-27-1 Rokkakubashi, Kanagawa-ku, Yokohama 221-8686, Japan.

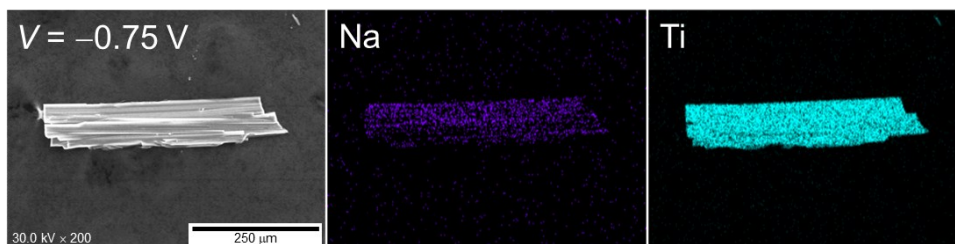
E-mail: [t-mot@kanagawa-u.ac.jp](mailto:t-mot@kanagawa-u.ac.jp)



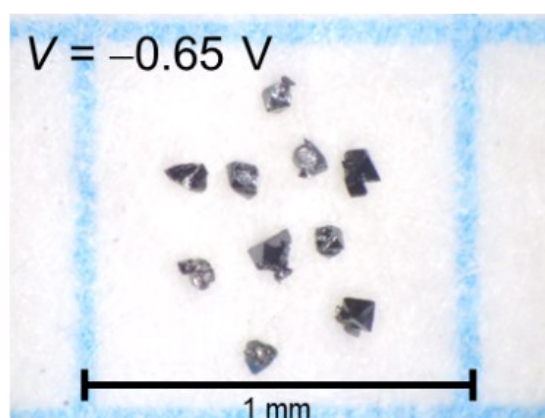
**Fig. S1.** (a) Optical microscopic image and (b) XRD pattern of the  $K_{2+x}Ti_6O_{13}$  crystals grown with  $V = -0.85$  V. (c) Schematic illustration of the structure of  $K_{2+x}Ti_6O_{13}$  viewed from the  $b$ -axis direction.



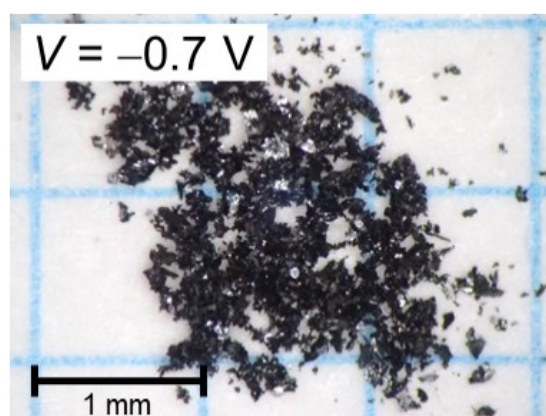
**Fig. S2.** EDX mapping images of the  $K_xTi_8O_{16}$  crystals grown with (a)  $V = -0.6$  V and (b)  $-0.85$  V.



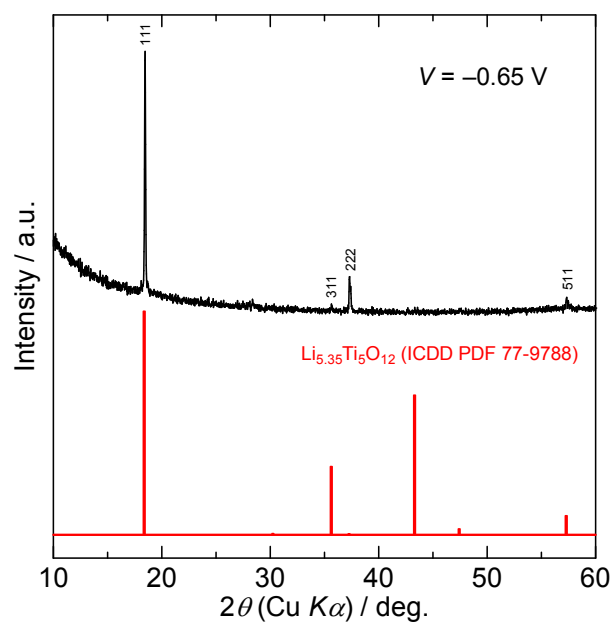
**Fig. S3.** EDX mapping images of the  $\text{Na}_{2+x}\text{Ti}_6\text{O}_{13}$  crystal grown with  $V = -0.75 \text{ V}$ .



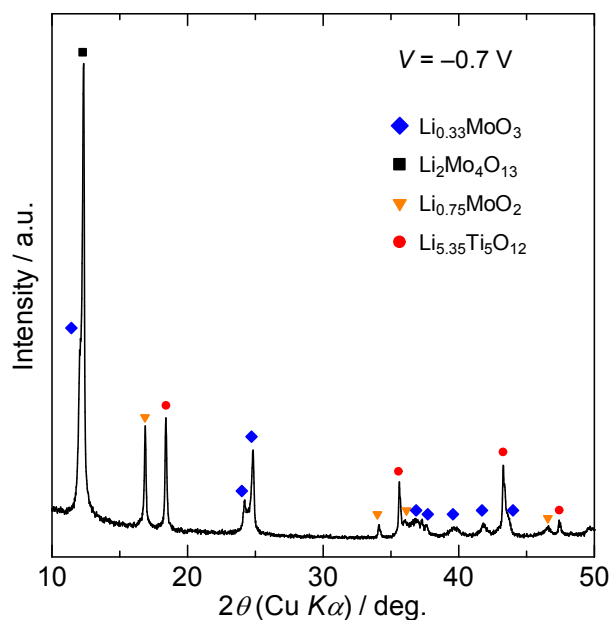
**Fig. S4.** Optical microscopic image of the  $\text{Li}_{4+x}\text{Ti}_5\text{O}_{12}$  crystals grown with  $V = -0.65 \text{ V}$ .



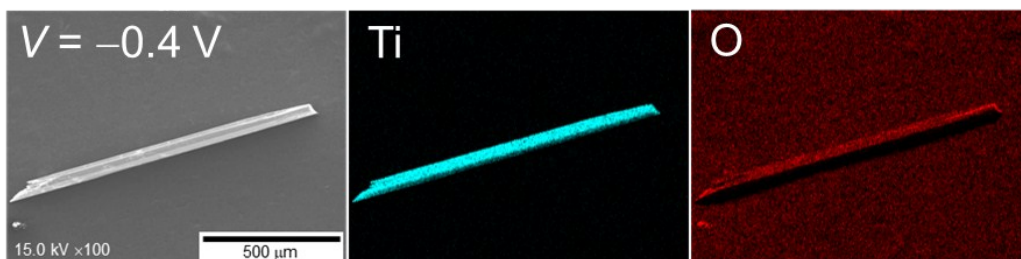
**Fig. S5.** Optical microscopic image of the mixture mainly consisting of layered  $\text{Li-Mo-O}$  compounds grown with  $V = -0.7 \text{ V}$ .



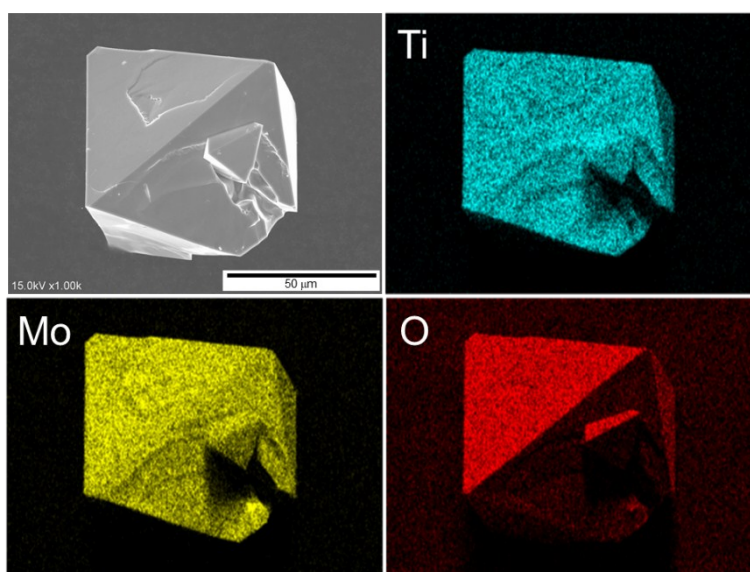
**Fig. S6.** XRD pattern for the  $\text{Li}_{4+x}\text{Ti}_5\text{O}_{12}$  crystals grown with  $V = -0.65$  V.



**Fig. S7.** XRD pattern for the mixture of layered Li-Mo-O compounds grown with  $V = -0.7$  V.



**Fig. S8.** EDX mapping images of the  $\text{Li}_{2+x}\text{Ti}_3\text{O}_7$  crystal grown with  $V = -0.4$  V.



**Fig. S9.** EDX mapping images of the  $\text{Li}_{4+x}\text{Ti}_5\text{O}_{12}$  crystal grown with  $V = -0.65$  V.