

**Supporting information for**

**Imperfect Oriented Attachment of Lanthanum Hydroxide Nanoparticles**

Sanivarapu Suresh Reddy<sup>a</sup>, Lawrence John Berchmans<sup>b</sup> and Gosipathala Sreedhar<sup>b\*</sup>

<sup>a</sup>Academy of Scientific and Innovative Research (AcSIR), CSIR-Central Electrochemical Research Institute, Karaikudi-630003, Tamilnadu, India

<sup>b</sup>Electropyro Metallurgy Division, CSIR-Central Electrochemical Research Institute, Karaikudi-630003, Tamilnadu, India.

\*To whom correspondence should be addressed. Email: [gsreedhar@cecri.res.in](mailto:gsreedhar@cecri.res.in)

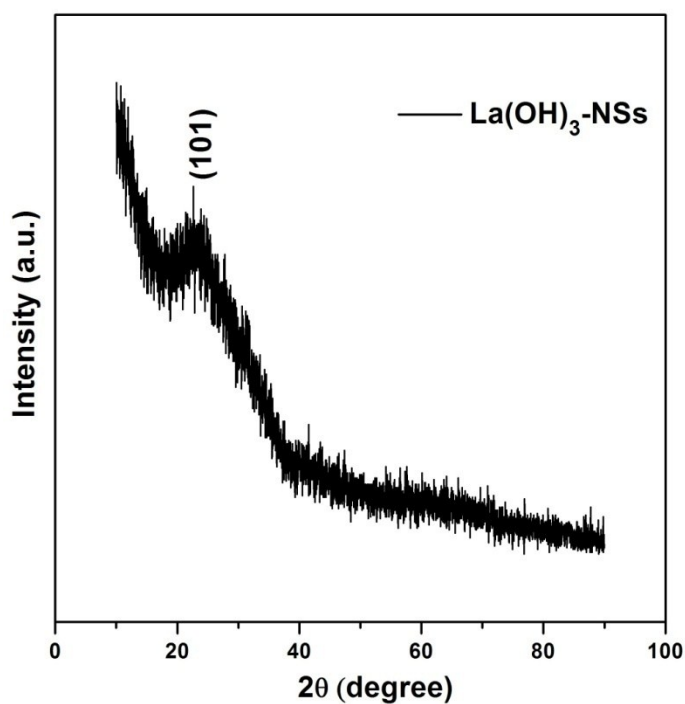


Figure S1 XRD Pattern of La(OH)<sub>3</sub>-MPA.

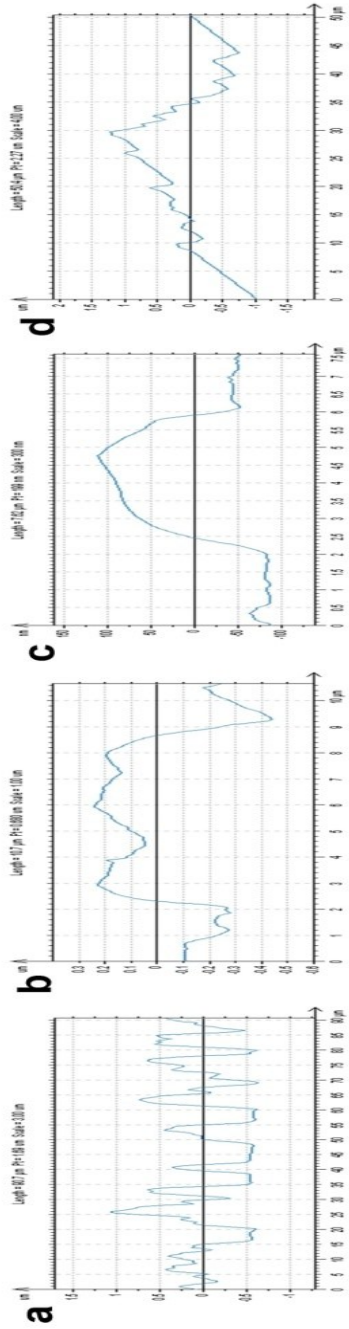


Figure S2 a). Roughness profile of  $\text{La}(\text{OH})_3$ -NPs, b). Roughness profile of clubbed  $\text{La}(\text{OH})_3$ -NPs, c). Roughness profile of amorphous  $\text{La}(\text{OH})_3$ -Ns, d). Roughness profile of crystalline  $\text{La}(\text{OH})_3$ -NSs.

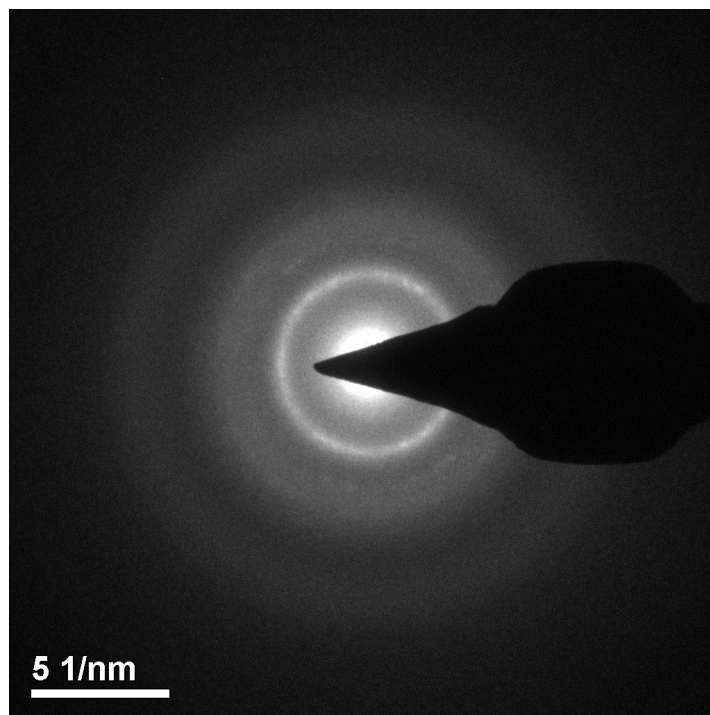


Figure S3 SAED of Amorphous La(OH)<sub>3</sub>-NSs.