

Supporting Information

Nickel/Iron-Based Bimetallic MOFs derived nickel ferrite materials for triethylamine sensing performance

Chengbo Zhai^a, Hongpeng Zhang^a, Liyong Du^a, Dongxue Wang^a, Dejun Xing^{b*}, Mingzhe Zhang^{a*}

^a State Key Laboratory of Superhard Materials, Jilin University, Changchun 130012, People's Republic of China. E-mail: zhangmz@jlu.edu.cn

^b Department of Medical Oncology, Jilin Cancer Hospital, Changchun, Jilin, 130012, People's Republic of China. 13944113398@163.com

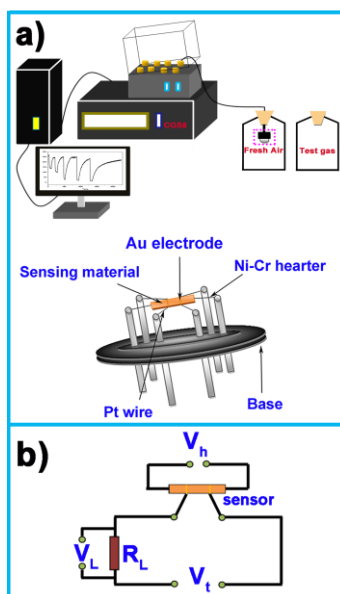


Fig. S1. Schematic diagrams of (a) the test equipment, the sensor and (b) implied test circuit.

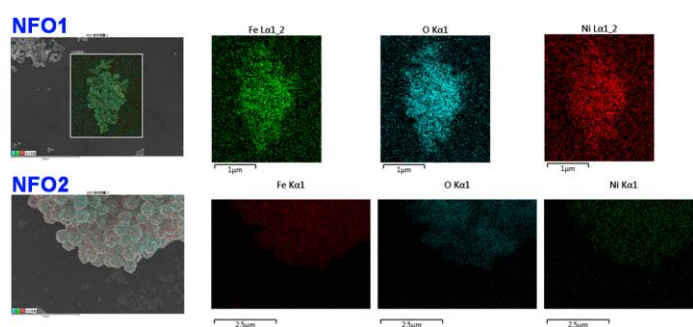


Fig. S2. The EDS mapping spectrograms of the NFO1 and the NFO2.

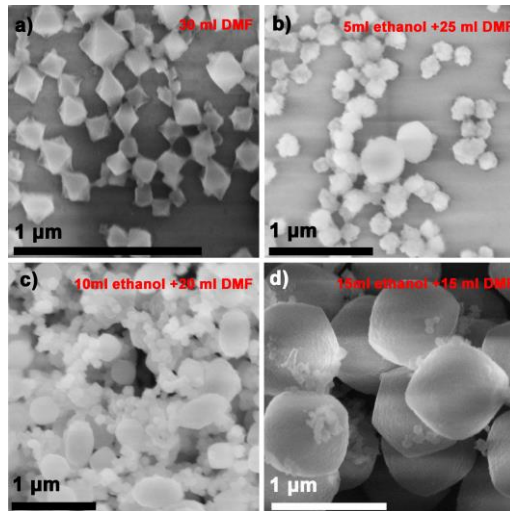


Fig. S3. the SEM images of bimetallic MOFs synthesized in different solvents.

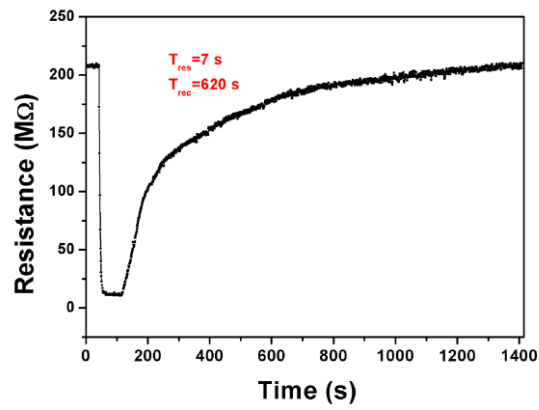


Fig. S4. The dynamic response/recovery curves of the NFO2 to 50 ppm TEA after 28 days of at 190°C.