

Supplementary Information

The stability of Pd/TS-1 and Pd/Silicalite-1 for catalytic oxidation of methane - understanding the role of titanium

Hadi Hosseiniamoli ^a, Adi Setiawan ^b, Adesoji A. Adesina^d, Eric M. Kennedy ^c and Michael Stockenhuber ^{c*}

^aWestern Sydney University, Centre for Infrastructure Engineering, Sydney, 2747, Australia

^bMechanical Engineering Department, Universitas Malikussaleh, Lhokseumawe, 24352, Indonesia

^cThe University of Newcastle, Newcastle, 2308, Australia

^d ATODATECH LLC, Brentwood, CA 94513, USA.

*Corresponding author: Michael Stockenhuber (michael.stockenhuber@newcastle.edu.au)

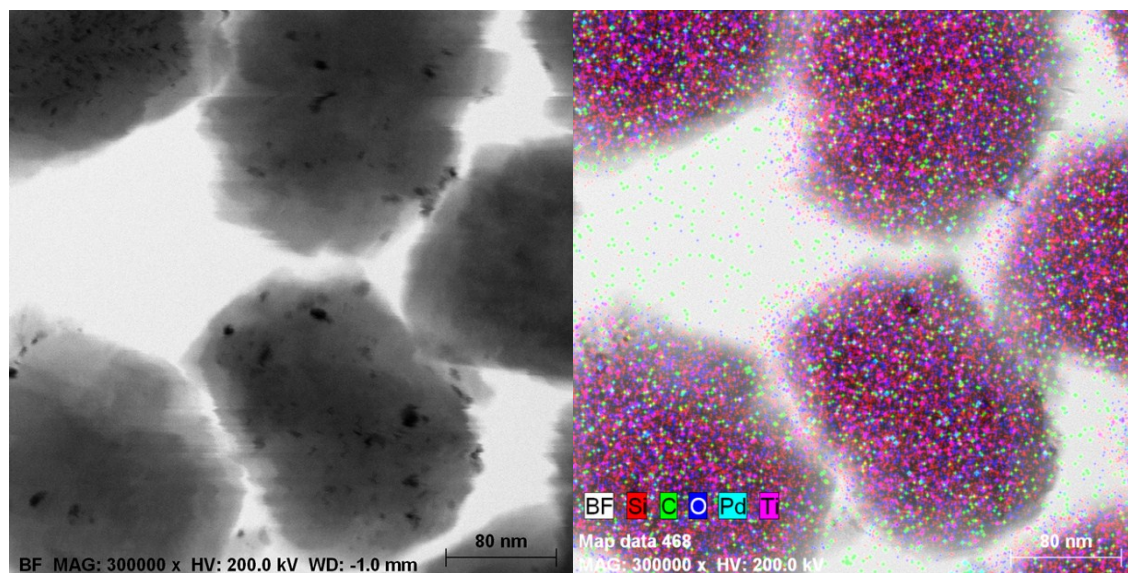


Fig. S1. TEM image and elemental mapping by EDS analysis of Pd/TS-1

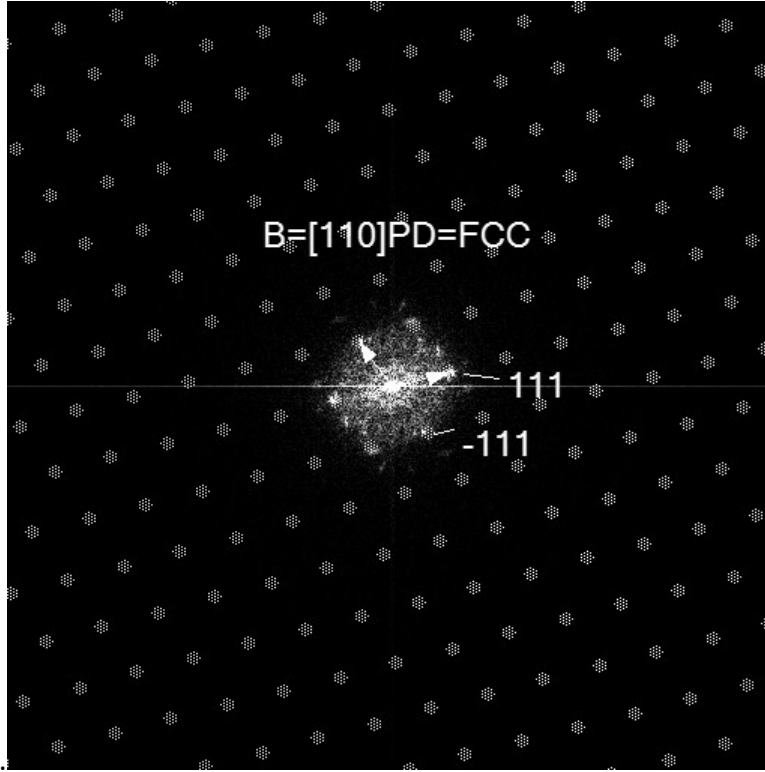


Fig. S2. The Indexed FFT pattern of PdO (111) facet plane on Pd/TS-1