

**Biological evaluation of optically pure chiral binuclear copper(II) complexes
based on rosin derivative as highly potential anticancer agents**

Bao-Li Fei,^{+,a,b,c} Shuangyan Tu,^{+,a,b} Zuzhuang Wei,^c Pingping Wang,^{a,b} Jian-Ying Long,^d Chunhua Qiao^{*e} and Zhen-Feng Chen^{*c}

a Dr. B.-L. Fei, S. S. Tu, P. P. Wang

Jiangsu Key Lab of Biomass-based Green Fuels and Chemicals,
College of Chemical Engineering,
Nanjing Forestry University,
Nanjing, 210037 (China)
E-mail: hgfbf@njfu.edu.cn

b Dr. B.-L. Fei, S. S. Tu, P. P. Wang

Jiangsu Co-Innovation Center of Efficient Processing and Utilization of Forest
Resources,
Nanjing Forestry University,
Nanjing 210037 (China)

c Z. Z. Wei, Prof. Z.-F. Chen

State Key Laboratory for Chemistry and Molecular Engineering of Medicinal
Resources, Guangxi Normal University,
Guilin 541004 (China)
E-mail: chenzzf@gxnu.edu.cn

d Dr. J.-Y. Long

College of Science,
Nanjing Forestry University,
Nanjing 210037, China

e Prof. C. H. Qiao

College of Pharmaceutical Sciences,
Soochow University,
Suzhou 215123 (China)
E-mail: qiaochunhua@suda.edu.cn

+ These authors contributed equally to this work.

Table of Contents

Supporting Figures and Scheme

Fig. S1 IR spectra of **1**.

Fig. S2 IR spectra of **2**.

Fig. S3 CD spectra of **1** in ethanol solution with the concentration of 1.0×10^{-5} M.

Fig. S4 CD spectra of **2** in ethanol solution with the concentration of 1.0×10^{-5} M.

Fig. S5 ESI-MS spectrum of **1** in DMF.

Fig. S6 ESI-MS spectrum of **2** in DMF.

Fig. S7 Uv-vis spectra of **1** (left) and **2** (right) in DMF as a function of time.

Fig. S8 Uv-vis spectra of **1** (left) and **2** (right) in 10% DMF/50 mM NaCl/5 mM Tris-HCl buffer.

Fig. S9 Cyclic voltammograms of blank (top, left), 1 mM **HL** (top, right), 1 mM CuCl₂ (bottom, left) and 1 mM CuBr₂ (bottom, left) in DMF and 0.1 M TBABF₄ in DMF.

Scheme S1 The chemical structure of dehydroabietylamine.

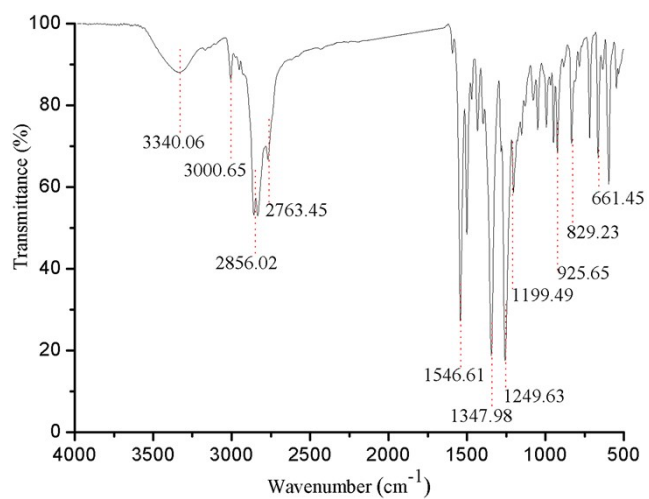


Fig. S1 IR spectra of **1**.

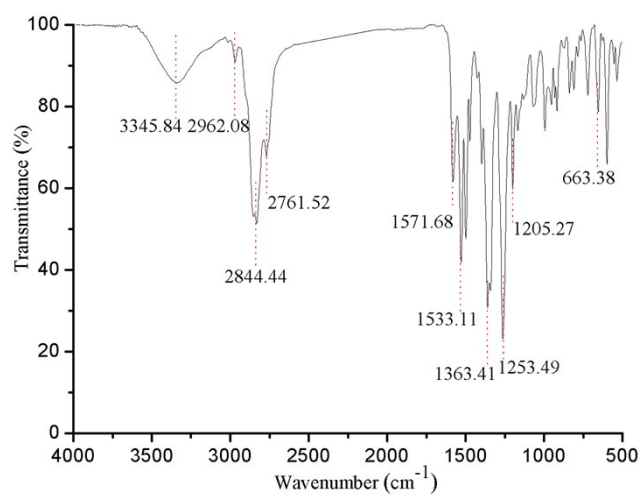


Fig. S2 IR spectra of **2**.

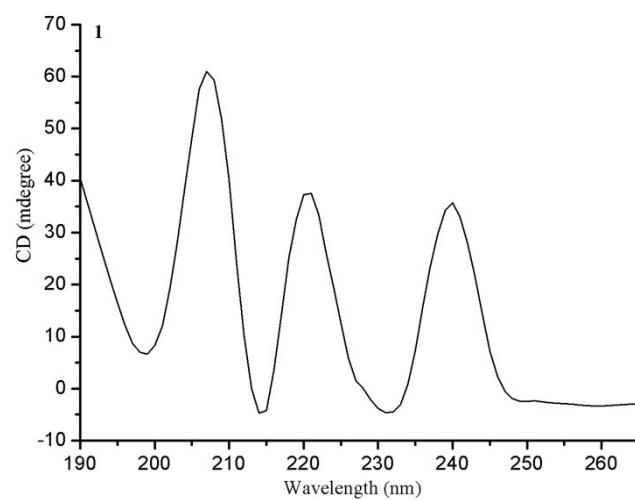


Fig. S3 CD spectra of **1** in ethanol solution with the concentration of 1.0×10^{-5} M.

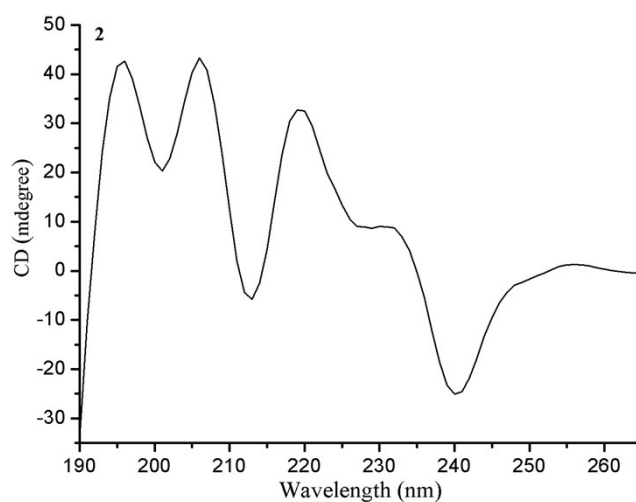


Fig. S4 CD spectra of **2** in ethanol solution with the concentration of 1.0×10^{-5} M.

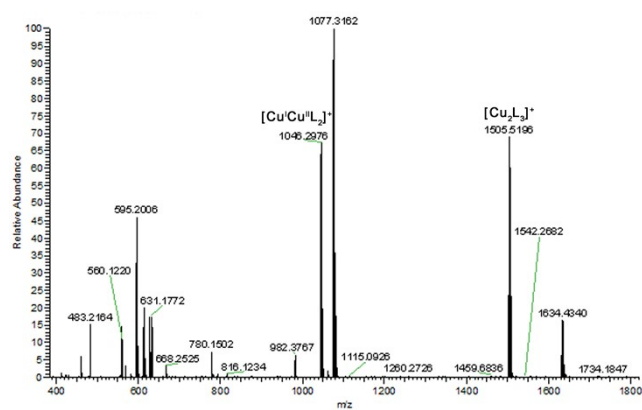


Fig. S5 ESI-MS spectrum of **1** in DMF.

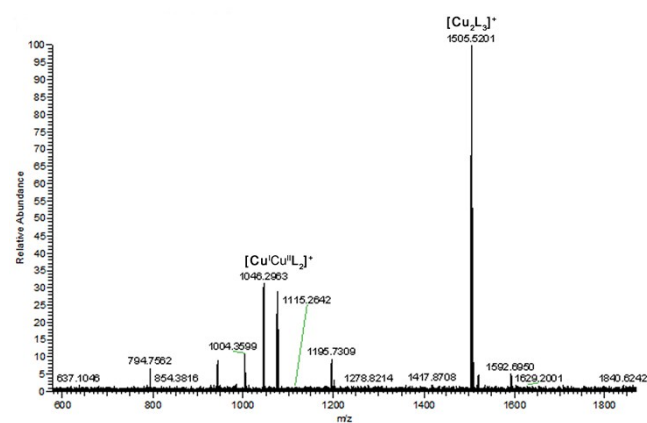


Fig. S6 ESI-MS spectrum of **2** in DMF.

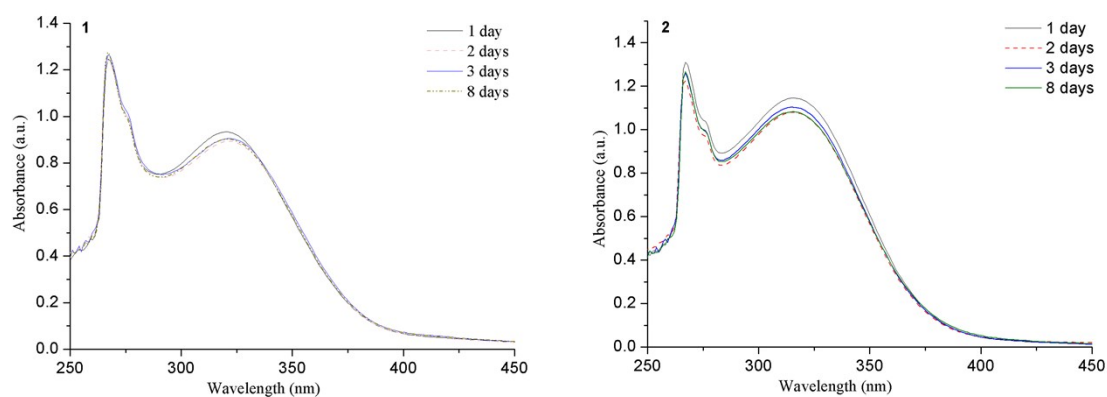


Fig. S7 Uv-vis spectra of **1** (left) and **2** (right) in DMF as a function of time.

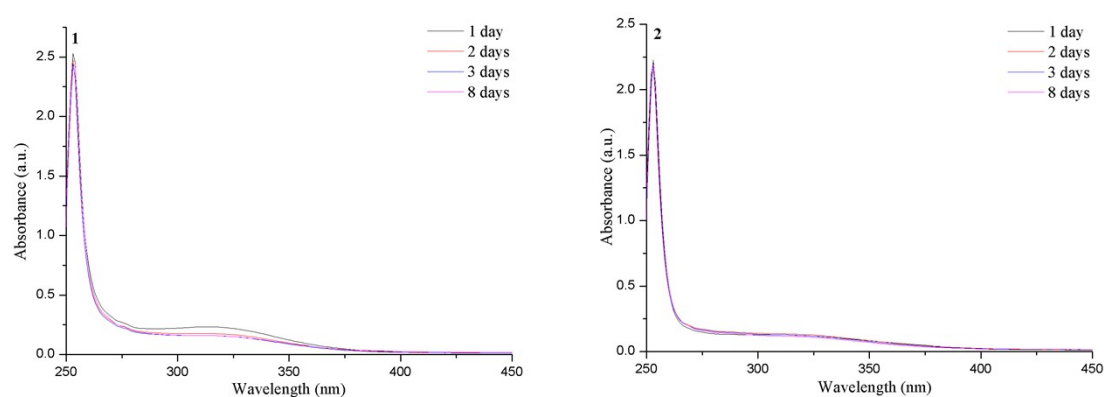


Fig. S8 Uv-vis spectra of **1** (left) and **2** (right) in 10% DMF/50 mM NaCl/5 mM Tris-HCl buffer.

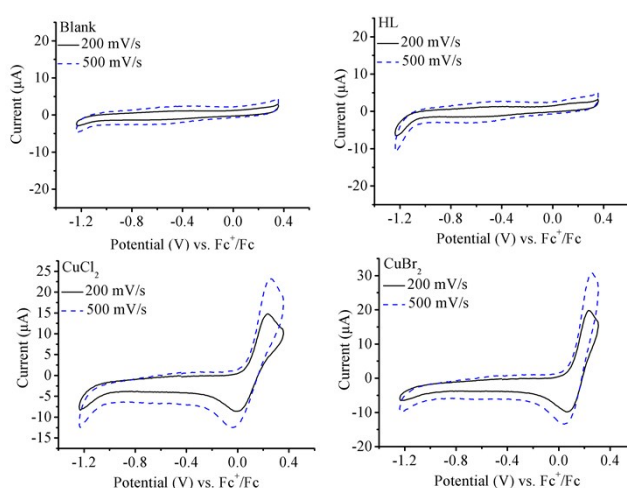
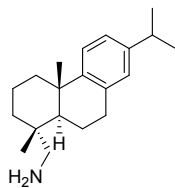


Fig. S9 Cyclic voltammograms of blank (top, left), 1 mM HL (top, right) , 1 mM CuCl_2 (bottom, left) and 1 mM CuBr_2 (bottom, left) in DMF and 0.1 M TBABF_4 in

DMF.



Scheme S1 The chemical structure of dehydroabietylamine.