

Supplementary Information

Tailoring magnetic resonance imaging relaxivities in macroporous Prussian blue cubes

*Wenlan Guan, Ji Ma, Xi Peng and Kezheng Chen**

Lab of Functional and Biomedical Nanomaterials, College of
Materials Science and Engineering, Qingdao University of
Science and Technology, Qingdao 266042, China.

* To whom correspondence should be addressed. Tel: +86-532-84022509. Fax: +86-
532-84022509. E-Mail: kchen@qust.edu.cn

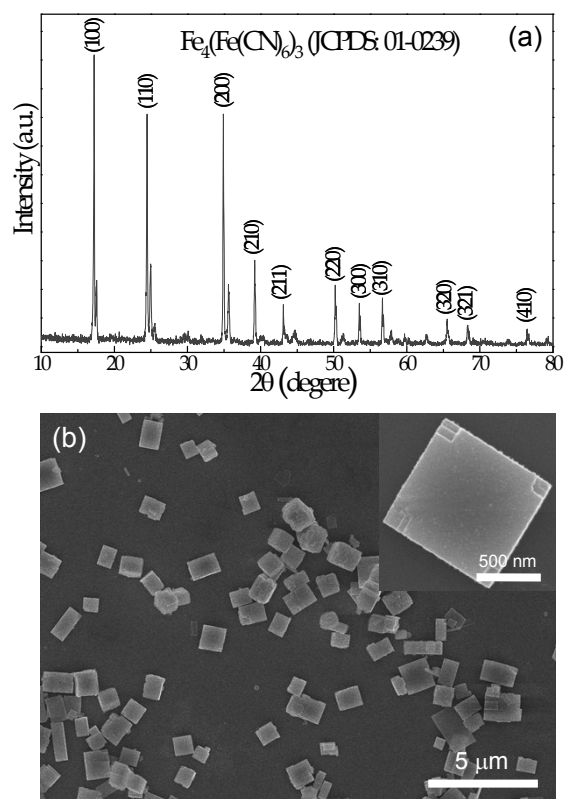


Figure S1. (a) PXRD pattern and (b) FESEM image of the as-synthesized product prior to acid etching. A zoom-in image of a single particle is shown as an inset in panel (b).

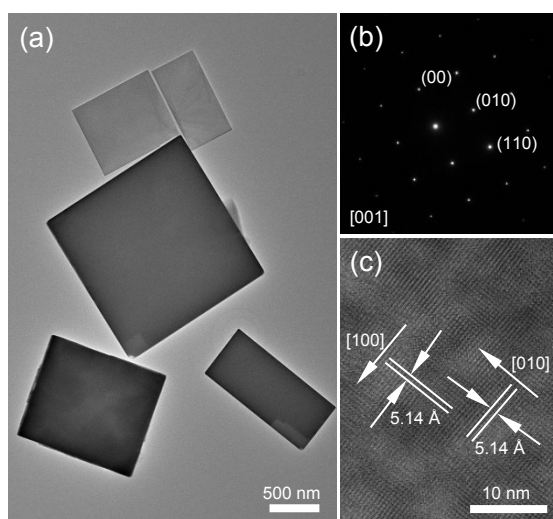


Figure S2. (a) TEM image, (b) SAED pattern and (c) HRTEM image of the as-synthesized product prior to acid etching.

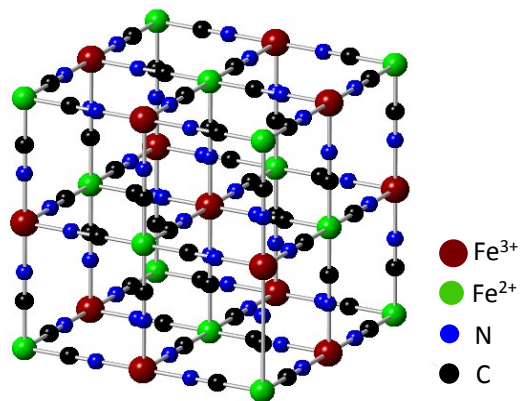


Figure S3. The unit-cell crystal structure of Prussian blue.

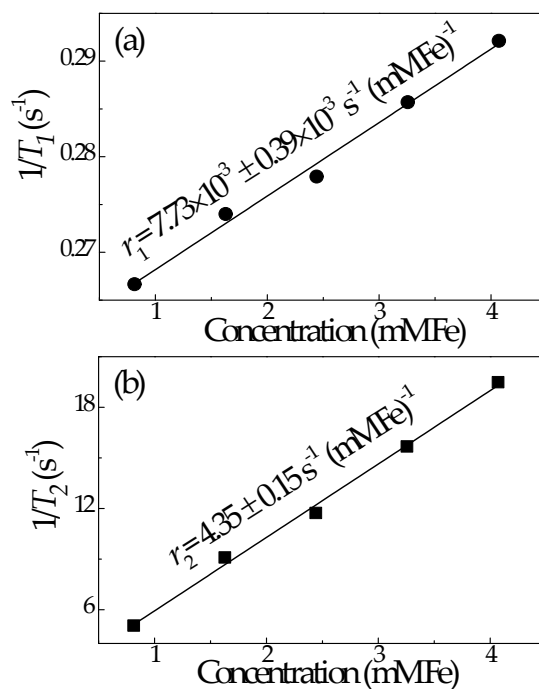


Figure S4. Plots of (a) $1/T_1$ and (b) $1/T_2$ versus iron concentrations for the as-synthesized product after acid etching treatment with 0 M.

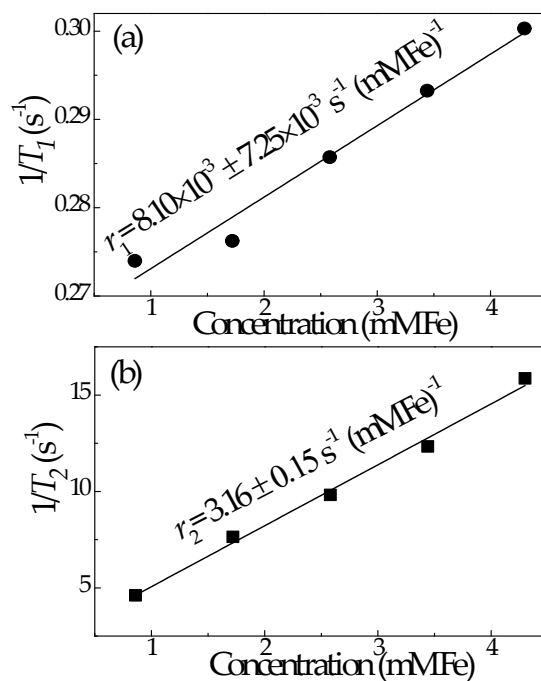


Figure S5. Plots of (a) $1/T_1$ and (b) $1/T_2$ versus iron concentrations for the as-synthesized product after acid etching treatment with 0.5 M.

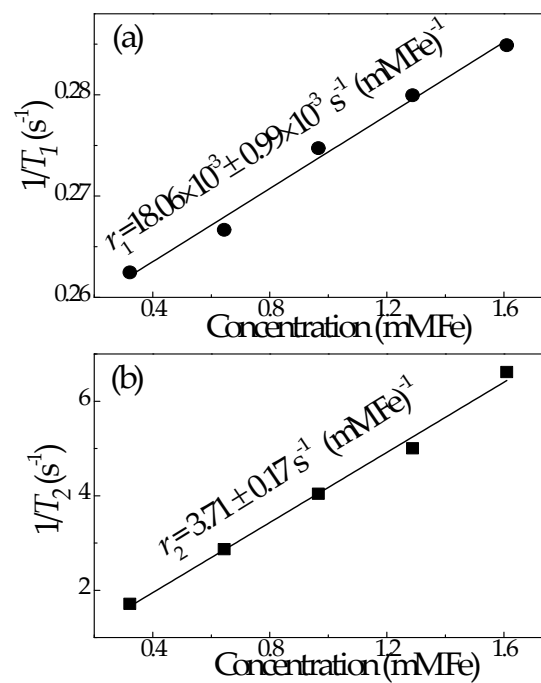


Figure S6. Plots of (a) $1/T_1$ and (b) $1/T_2$ versus iron concentrations for the as-synthesized product after acid etching treatment with 1.5 M.

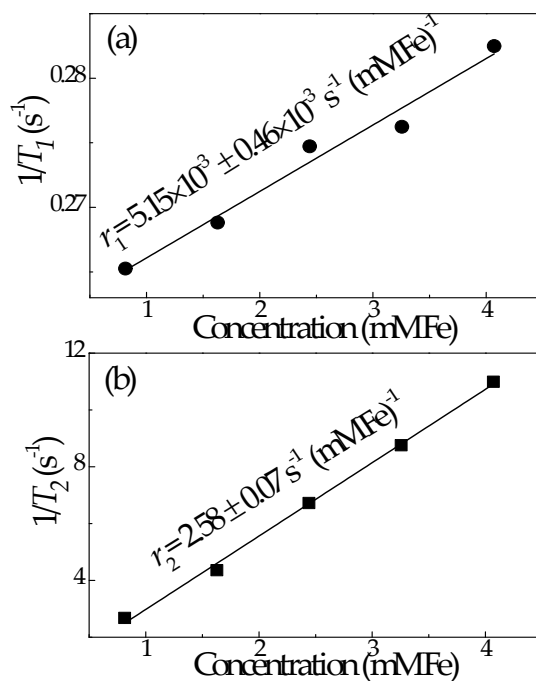


Figure S7. Plots of (a) $1/T_1$ and (b) $1/T_2$ versus iron concentrations for the as-synthesized product after acid etching treatment with 2 M.

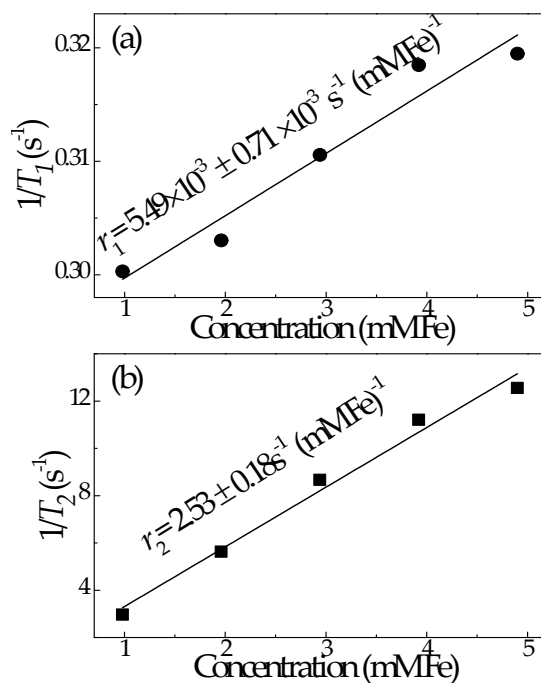


Figure S8. Plots of (a) $1/T_1$ and (b) $1/T_2$ versus iron concentrations for the as-synthesized product after acid etching treatment with 2.5 M.