

Supporting Information

The Role of Neutral Rh(PONOP)H, free NMe₂H,
Boronium and Ammonium Salts in the
Dehydrocoupling of Dimethylamineborane using
the Cationic Pincer [Rh(PONOP)(η²-H₂)]⁺ Catalyst.

E. Anastasia K. Spearing-Ewyn, Nicholas A. Beattie, Annie L.
Colebatch, Antonio J. Martinez-Martinez, Andrew Docker, Timothy
M. Boyd, Gregg Baillie, Rachel Reed, Stuart A. Macgregor,* Andrew S.
Weller*

Table of Contents

Reaction of 2 with D ₂	3
Catalyst speciation under hydrogen evolution conditions.....	4
Application of simple kinetic models to reaction profile of catalysis, 2 mol%	5
Tests for homogeneity.....	6
Mercury poisoning.....	6
PPh ₃ fractional poisoning.....	6
Application of simple kinetic models to catalysis doped with 1 equivalent of NMe ₂ H	7
Calculation of maximum rates of dehydrogenation	7
Maximum rate of catalysis versus [1]	7
Anion binding titration of [H ₂ B(NMe ₂ H) ₂][BArF ₄] with H ₃ B·NMe ₂ H.....	8
Crystallography	8
Computational details	10
Alternative Reaction Pathways from Cationic [Rh(PONOP)(DMAB)] ⁺ , 3.	10
Alternative Reaction Pathways from Neutral [Rh(PONOP)(H)], 4.	13
Computed Cartesian Coordinates (Å) and Energies (Hartrees) for all stationary points.....	14
References.....	41

Reaction of 2 with D₂

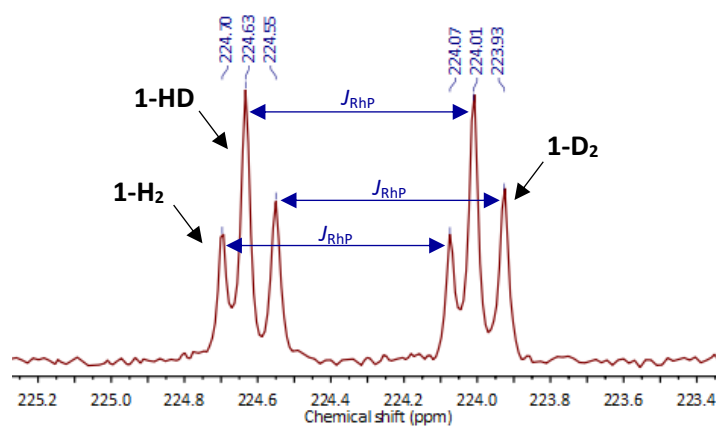


Figure S1. Partial ³¹P{¹H} NMR spectrum (1,2-F₂C₆H₄ solvent, 298 K, 500 MHz) of the reaction mixture 30 minutes after time of mixing. **1-H₂** δ 224.4, *J*_{RhP} 126 Hz; **1-HD** δ 224.3, *J*_{RhP} 126 Hz; **1-D₂** δ 224.2, *J*_{RhP} 126 Hz.

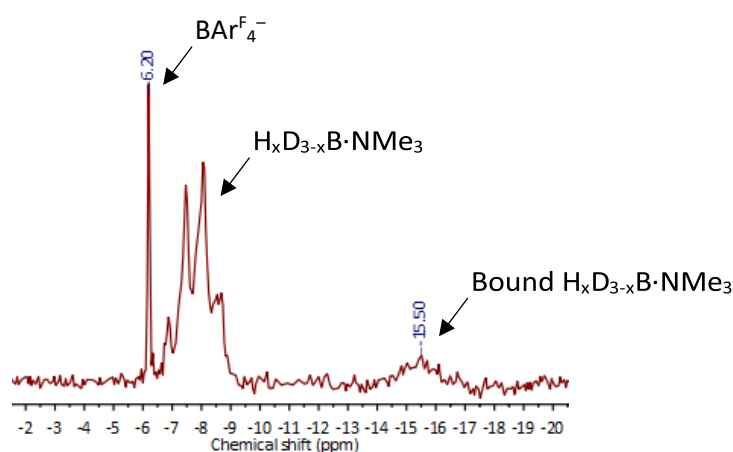


Figure S2. ¹¹B NMR spectrum (1,2-F₂C₆H₄ solvent, 298 K, 500 MHz) of the reaction mixture 30 minutes after time of mixing.

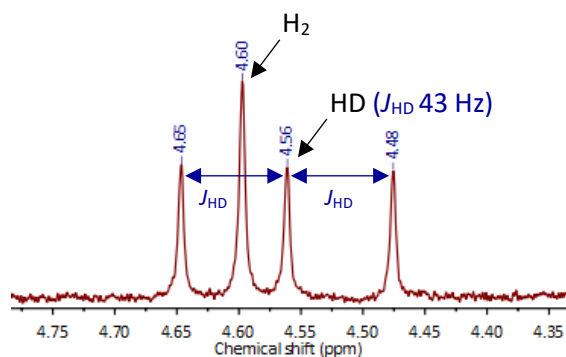


Figure S3. Partial ¹H NMR spectrum (1,2-F₂C₆H₄ solvent, 298 K, 500 MHz) of the reaction mixture 30 minutes after time of mixing.

Catalyst speciation under hydrogen evolution conditions

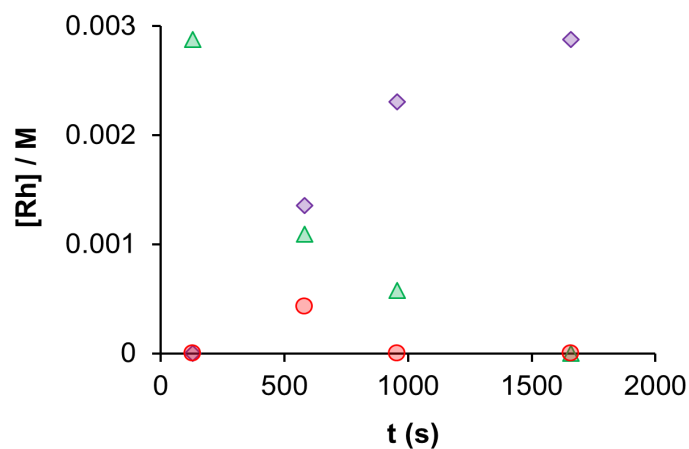


Figure S4. Time course plot for dehydrogenation of $\text{H}_3\text{B}\cdot\text{NMe}_2\text{H}$ [0.072 M, 298 K, 1,2- $\text{F}_2\text{C}_6\text{H}_4$ solvent] using complex **1** (4 mol%) under hydrogen evolution conditions as measured by $^{31}\text{P}\{^1\text{H}\}$ NMR spectroscopy of aliquots of the reaction mixture taken at four different times after time of mixing. \circ = complex **4**, \triangle = complex **3** and \diamond = complex **1**.

Application of simple kinetic models to reaction profile of catalysis, 2 mol%

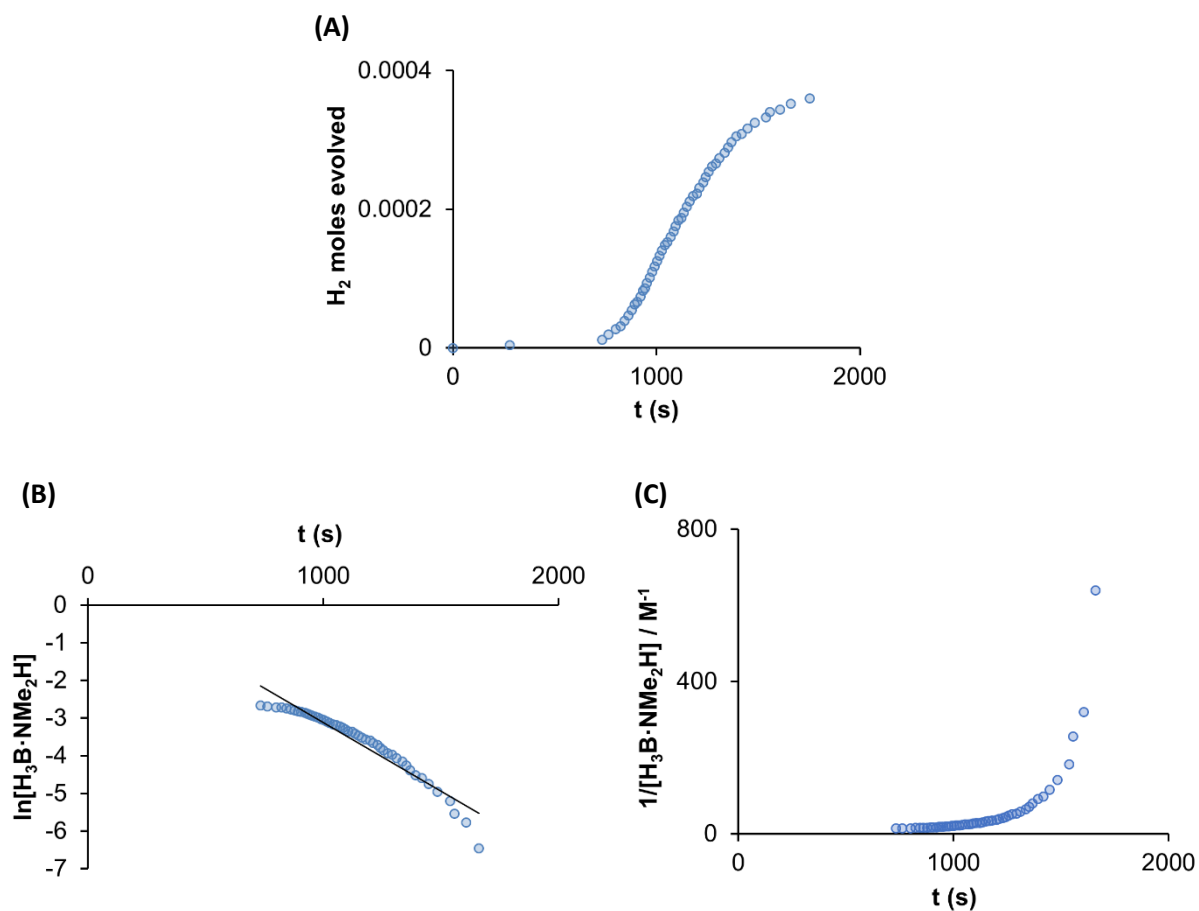


Figure S5. (A) Time course plot for the dehydrogenation of H₃B·NMe₂H [0.072 M, 298 K, 1,2-F₂C₆H₄ solvent] using complex **1** (2 mol%) under hydrogen evolution conditions. (B) Plot of the natural logarithm of [H₃B·NMe₂H] vs. time (post induction period) showing poor agreement with first order rate kinetics. (C) Plot of 1/[H₃B·NMe₂H] vs. time (post induction period) showing poor agreement with second order rate kinetics.

Tests for homogeneity

Mercury poisoning

Dehydrogenation was conducted as per standard hydrogen evolution measurement conditions at a catalyst loading of 2 mol%. After 0.25 equivalents of expected hydrogen had evolved, an excess of elemental mercury (2000 eq relative to catalyst) was added. Catalysis continued, consistent with a homogeneous system, although only 0.9 equivalents of hydrogen were evolved and a small decrease in rate of catalysis was observed.

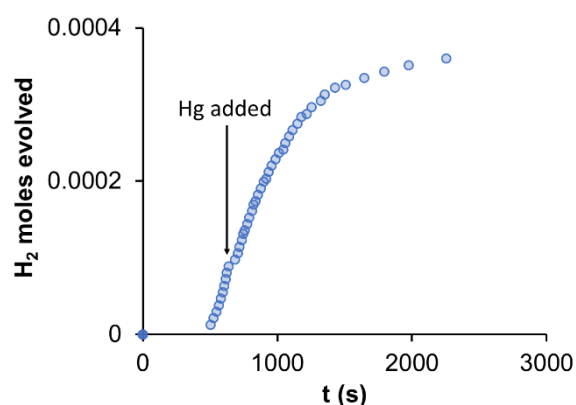


Figure S6. Time course plot for dehydrogenation of H₃B·NMe₂H [0.072 M, 298 K, 1,2-F₂C₆H₄ solvent] using complex **1** (2 mol%) as measured by H₂ evolution with the addition of 2000 eq. elemental mercury at 624 s.

PPh₃ fractional poisoning

Dehydrogenation was conducted as per standard hydrogen evolution measurement conditions at a catalyst loading of 2 mol%. After 0.25 equivalents of expected hydrogen had evolved, 0.2 equivalents (relative to catalyst) of PPh₃ in 0.2 mL 1,2-F₂C₆H₄ was added. A minor decrease in the rate of hydrogen evolution was observed, consistent with homogeneous catalysis.

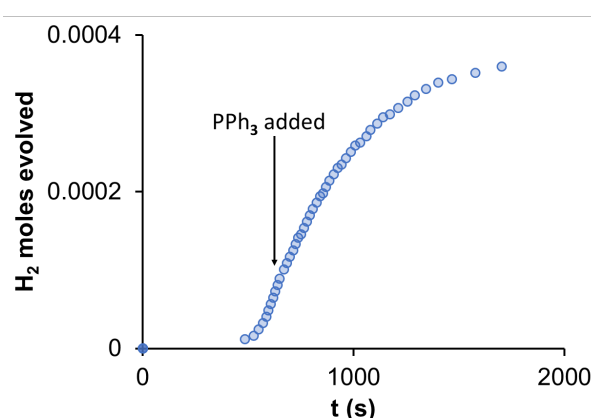


Figure S7. Time course plot for dehydrogenation of H₃B·NMe₂H [0.072 M, 298 K, 1,2-F₂C₆H₄ solvent] using complex **1** (2 mol%) as measured by H₂ evolution with the addition of 0.2 eq. PPh₃ at 640 s.

Application of simple kinetic models to catalysis doped with 1 equivalent of NMe₂H

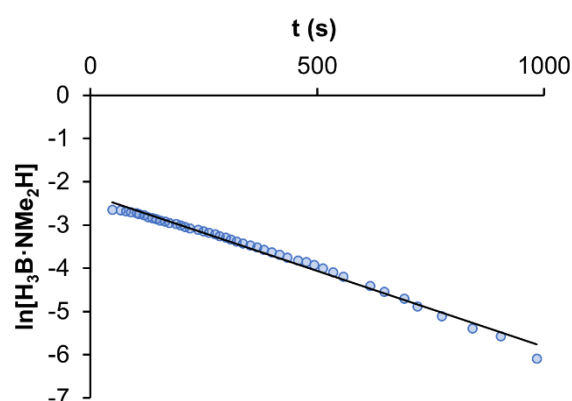


Figure S8. Plot of the natural logarithm of [H₃B·NMe₂H] vs. time (post induction period) for the dehydrogenation of H₃B·NMe₂H [0.072 M, 298 K, 1,2-F₂C₆H₄ solvent] using complex **1** (2 mol%) + 1 eq. NMe₂H (2 mol%) as measured under hydrogen evolution conditions.

Calculation of maximum rates of dehydrogenation

For each data set of [H₃B·NMe₂H] vs. time, Python 3 was run through the anaconda software distribution to fit the kinetic data to a polynomial.^{1,2} A 6th order polynomial was determined by inspection to give the best fit around the point of maximum rate and fitted to the data using the SciPy packages.³

Maximum rate of catalysis versus [1]

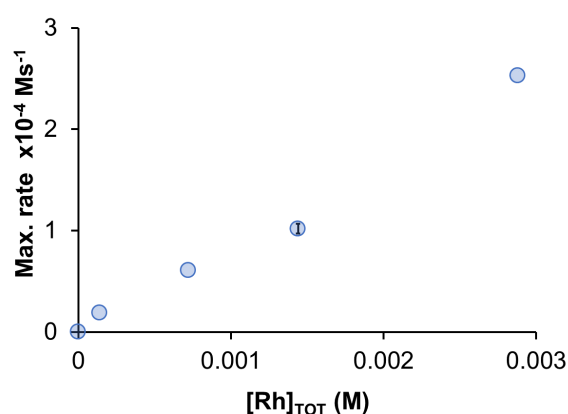


Figure S9. Maximum rate of catalysis versus [1] where starting [H₃B·NMe₂H] = 0.072 M as measured by H₂ evolution.

Anion binding titration of $[\text{H}_2\text{B}(\text{NMe}_2\text{H})_2][\text{BAr}^{\text{F}}_4]$ with $\text{H}_3\text{B}\cdot\text{NMe}_2\text{H}$

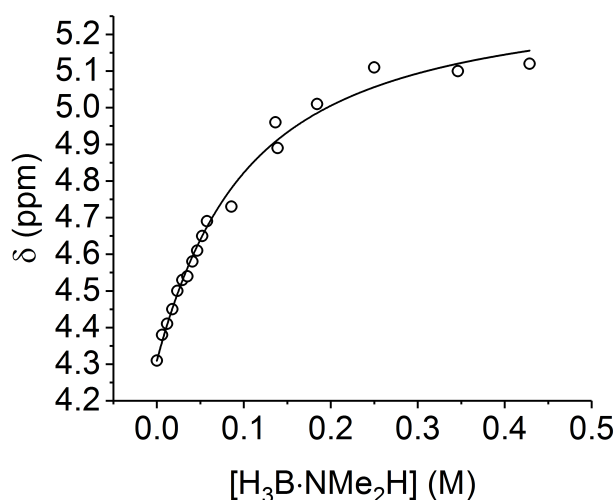


Figure S10. Anion binding titration of $[\text{H}_2\text{B}(\text{NMe}_2\text{H})_2][\text{BAr}^{\text{F}}_4]$ (298 K, 30 mM, 1,2- $\text{F}_2\text{C}_6\text{H}_4$) with $\text{H}_3\text{B}\cdot\text{NMe}_2\text{H}$. Attempted 1:1 binding isotherm fit is indicated by line. Attempted calculation of corresponding association constant, using WinEQNMR²⁴ monitoring the chemical shift data for the NH protons in $[\text{H}_2\text{B}(\text{NMe}_2\text{H})_2][\text{BAr}^{\text{F}}_4]$, was unsuccessful due to large errors in fitting.

Crystallography

Crystallographic data were collected (ω -scans) on a Nonius Kappa-CCD with Mo- $K\alpha$ radiation ($\lambda = 0.71073 \text{ \AA}$) for **2** and Oxford Diffraction/Agilent SuperNova diffractometer with Cu- $K\alpha$ radiation ($\lambda = 1.54184 \text{ \AA}$) equipped with nitrogen gas Oxford Cryosystems Cryostream unit for **4**.⁵ Raw frame data were reduced using CrysAlisPro, including unit cell determination and refinement, integration of intensities and associated correction, or the DENZO-SMN package.⁶ The structures were solved using direct methods with SIR92⁷ for **2** and SHELXT⁸ for **4**; and then refined using full-matrix least squares refinement on all F^2 data using the CRYSTALS program suite^{9,10} for **2**, and SHELXL⁸ using the interface GUI OLEX2¹¹ for **4**. Some of the CF_3 groups in the $[\text{BAr}^{\text{F}}_4]^-$ anion refined to give highly prolate¹² displacement ellipsoids. For each structure a split site model was used and same distance restraints were applied to maintain a sensible geometry. Thermal similarity and vibrational restraints were also used to ensure the displacement ellipsoids behaved as expected. For **2**, the hydrogen atoms were located in the difference Fourier maps and refined independently using soft restraints.¹⁰ Hydrogen atoms were refined in this way at intervals following inclusion in the refinement using a riding model. For **4**, the hydrogen atoms were set at geometric positions with exception of the hydride H atoms, which were located using the difference Fourier map, refined and the Rh-H bond lengths were restrained to refine similar lengths for the six independent molecules present in the asymmetric unit. In addition, **4** was refined as a 2-component twin, rotated by -179.9 degree around $0.00 \ 0.45 \ -0.89$ (reciprocal space) or $-0.05 \ 0.71 \ -0.71$ (direct space) and BASF refined to $0.4203(7)$. Selected crystallographic data are summarized in the text and full details are given in the supplementary deposited CIF files (CCDC 1917326 and 1917160). These data can be obtained free of charge from the Cambridge Crystallographic Data Centre via http://optimized.ccdc.cam.ac.uk/data_request/cif.

Compound	2	4
Chemical formula	C ₂₄ H ₅₁ BN ₂ O ₂ P ₂ Rh·C ₃₂ H ₁₂ BF ₂₄	C ₂₁ H ₄₀ NO ₂ P ₂ Rh
Formula weight	1438.55	503.39
Temperature (K)	150	150
Crystal system	Monoclinic	Triclinic
Space group	<i>P</i> 2 ₁ / <i>c</i>	<i>P</i> -1
<i>a</i> (Å)	12.6670 (1)	9.2325(2)
<i>b</i> (Å)	18.7076 (2)	26.6707(4)
<i>c</i> (Å)	26.9666 (3)	33.1426(6)
α (deg)	90	68.569(2)
β (deg)	94.9435 (5)	89.805(2)
γ (deg)	90	88.2210(10)
<i>V</i> (Å ³)	6366.48 (11)	7592.7(3)
<i>Z</i>	4	12
ρ (calcd) (g cm ⁻³)	1.501	1.321
μ (mm ⁻¹)	0.43	6.757
Reflections collected	22651	51748
Unique reflections	14142	51748
Restraints/parameters	924/1072	36/1555
<i>R</i> _{int}	0.029	0.0973
<i>R</i> ₁ [<i>I</i> > 2 σ (<i>I</i>)]	0.050	0.0592
<i>wR</i> ₂ [<i>I</i> > 2 σ (<i>I</i>)]	0.135	0.1893
GooF	0.92	1.086
Residual electron density (e Å ⁻³)	1.17, -1.11	1.833, -2.100
CCDC no.	1917326	1917160

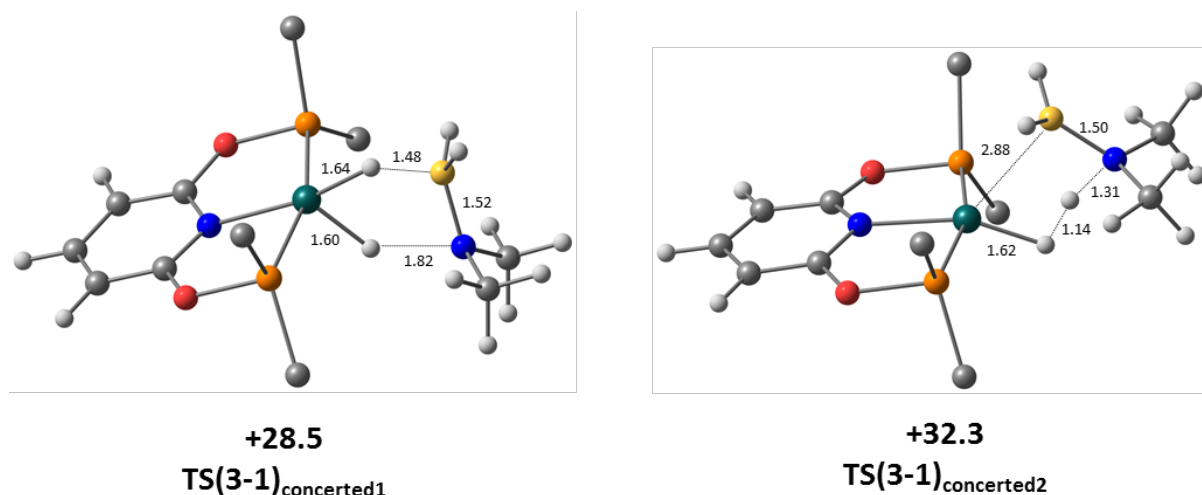
Table S1. Crystallographic data for complexes **2** and **4**.

Computational details

Calculations were run with Gaussian 09 Revision D.01.¹³ Geometry optimisations were performed using the BP86 functional¹⁴⁻¹⁵ with Rh and P centres described via Stuttgart RECPs and associated basis sets¹⁶ (with additional d-orbital polarisation on P¹⁷) and 6-31G** basis sets¹⁸⁻¹⁹ for all other atoms. All stationary points were fully characterized via analytical frequency calculations as either minima (no imaginary frequencies) or transition states (a single imaginary frequency). Transition states were further characterised through IRC calculations and subsequent geometry optimisations. SCF energies were re-computed at the BP86-optimised geometries with the def2-tzvp basis sets²⁰ on all atoms and including a correction for 2-hexanone solvent via the PCM approach²¹ and dispersion using Grimme's D3 parameter set with Becke-Johnson damping.²² 2-hexanone ($\epsilon = 14.14$) was employed as solvent in the absence of parameters for 1,2-difluorobenzene ($\epsilon = 13.81$).

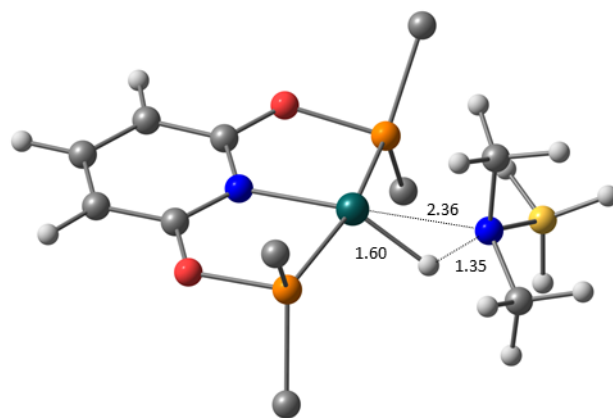
Alternative Reaction Pathways from Cationic [Rh(PONOP)(DMAB)]⁺, **3**.

Two transition states were located for concerted processes involving activation of both the B-H and the N-H bonds, **TS(3-1)_{concerted1}** and **TS(3-1)_{concerted2}**. Both were shown to lead directly to the formation of **1** and Me₂NBH₂ (Scheme S1).



Scheme S1. Transition states for dehydrogenation from [Rh(PONOP) (DMAB)]⁺ via concerted processes. Free energies (kcal/mol) are quoted relative to **3** set to 0.0 kcal/mol. The free energy change for **3** → **1** + free DMAB is +0.1 kcal/mol. Ball and stick representations have the ^tBu Me groups removed for clarity and all distances are given in Å.

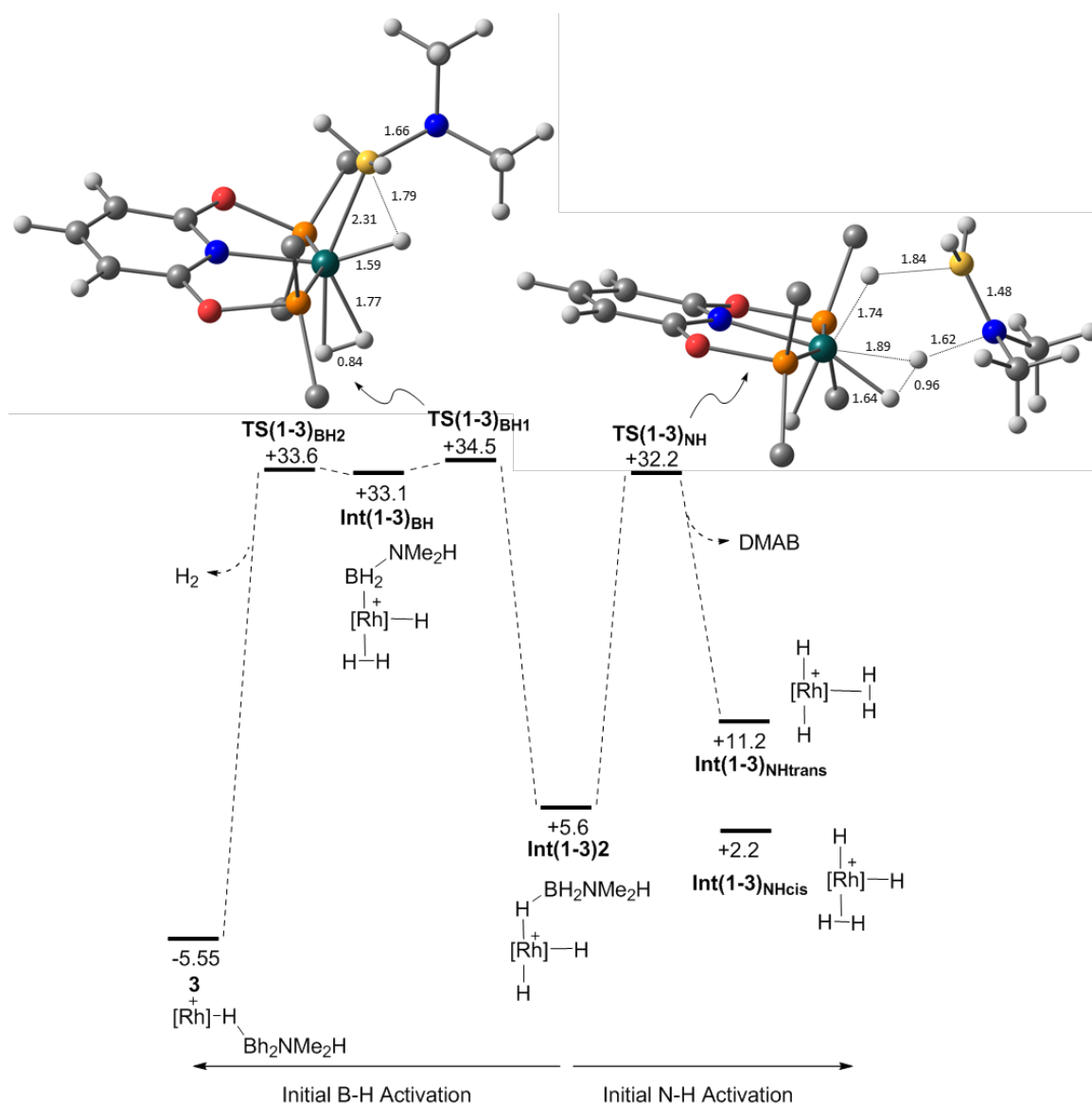
No intermediates corresponding to initial B-H activation could be located, with all attempts reverting to **3** upon optimisation. A transition for initial N-H activation, **TS(3-1)_{NH}** was located at +50.0 kcal/mol (Scheme S2). IRCs showed this links to **Int(3-1)_{NH1}** at 26.0 kcal/mol, a C-H σ -complex bound through a Me C-H bond, and $[\text{Rh}(\text{PONOP})(\text{H})(\text{NMe}_2\text{BH}_3)]^+$ at +23.5 kcal/mol, **Int(3-1)_{NH2}** (Scheme S2).



+50.0
TS(3-1)_{NH}

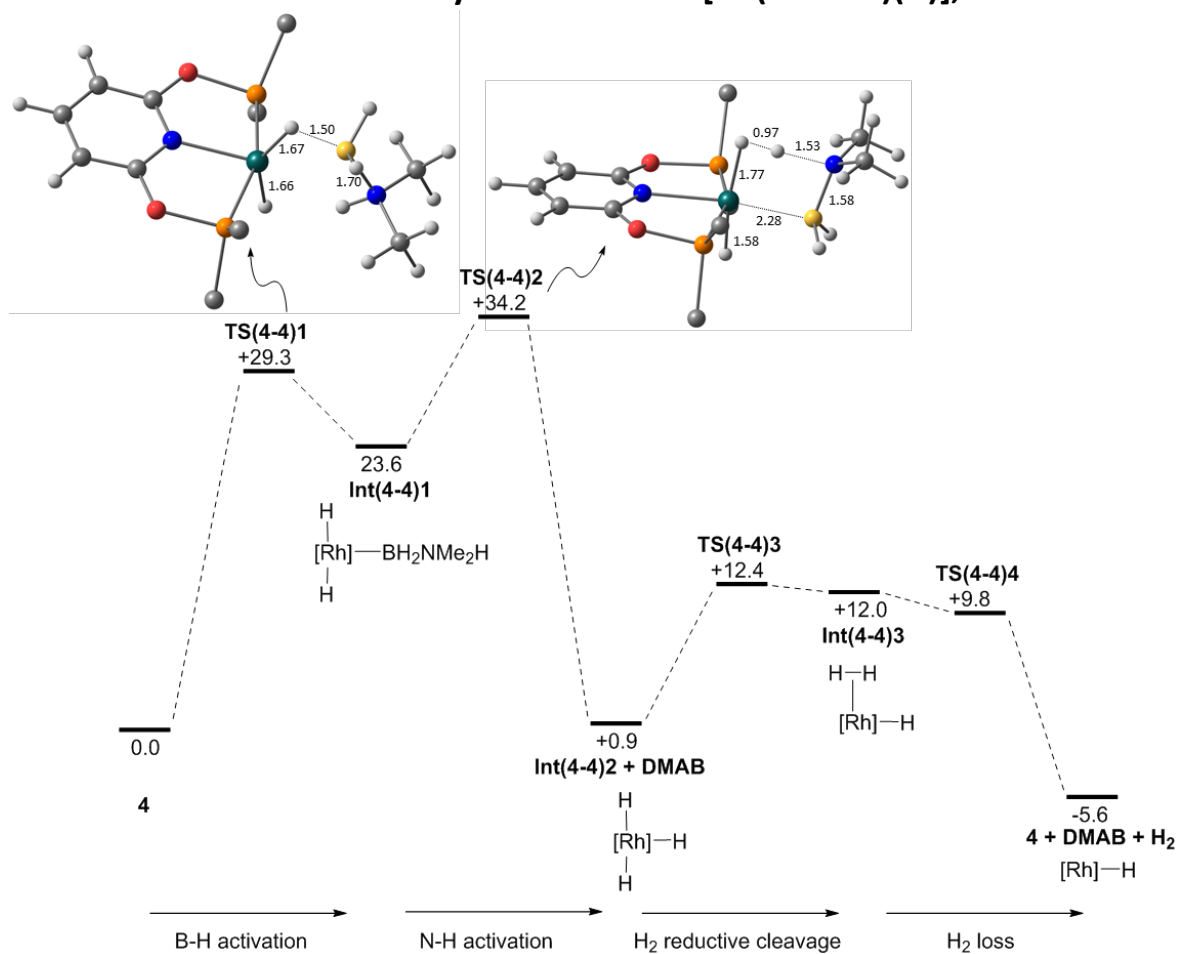
Scheme S2. Transition state for initial N-H activation from $[\text{Rh}(\text{PONOP})(\text{DMAB})]^+$. Free energy (kcal/mol) is quoted relative to **3** set to 0.0 kcal/mol. Ball and stick representations have the ^tBu Me groups removed for clarity and all distances are given in Å.

Dehydrogenation was also assessed from **Int(1-3)2**, $[\text{Rh}(\text{PONOP})(\text{H})_2(\text{H}_3\text{BNMe}_2\text{H})]^+$ (Scheme S3, centre). B-H activation (left) led to $[\text{Rh}(\text{PONOP})(\eta^2\text{-H}_2)(\text{H})(\text{H}_2\text{BNMe}_2\text{H})]^+$, **Int(1-3)_{BH1}**, but upon H_2 loss B-H reductive coupling occurred to return **3**. N-H activation (right) resulted in a concerted process with expulsion of H_2BNMe_2 and formation of trans- $[\text{Rh}(\text{PONOP})(\eta^2\text{-H}_2)(\text{H})_2]^+$, **Int(1-3)_{NHtrans}**.



Scheme S3. Dehydrogenation profiles from $[\text{Rh}(\text{PONOP})(\text{H})_2(\text{H}_3\text{BNMe}_2\text{H})]^+$, **Int(1-3)2** (left: B-H activation; right: N-H activation). Free energies (kcal/mol) are quoted relative to **3** set to 0.0 kcal/mol. Ball and stick representations have the ^tBu Me groups removed for clarity and all distances are given in Å. [Rh] = (PONOP)Rh.

Alternative Reaction Pathways from Neutral [Rh(PONOP)(H)], **4**.



Scheme S4. Dehydrogenation from [Rh(PONOP) (H)], **4**, via initial B-H activation. [Rh] = (PONOP)Rh. Energies are quoted relative to **4** + free H₃B·NMe₂H set to 0.0 kcal/mol. Ball and stick representations have the ^tBu Me groups removed for clarity and all distances are given in Å. Alternative pathways via formation of a cis isomer of **Int(4-4)1** were also assessed and proved higher energy.

Computed Cartesian Coordinates (Å) and Energies (Hartrees) for all stationary points.

In the following SCF(Corr) refers to the SCF energy recomputed with the def2-tzvp basis sets including corrections for dispersion (BJD3) and solvation (2-hexanone). The two lowest frequencies are reported for each structure to signal a minimum (no negative modes) or a TS (one negative modes)

```

Dihydrogen
SCF = -1.17646504316
H(0 K)= -1.166553
H(298 K)= -1.164193
G(298 K)= -1.178061
SCF (Corr) = -1.17782936552
Low Freq. = 4350.8276cm-1, cm-1

2
H 0.00000 0.00000 0.37545
H 0.00000 0.00000 -0.37545

H3B.NMe2H
SCF = -161.823572613
H(0 K)= -161.699830
H(298 K)= -161.693820
G(298 K)= -161.727716
SCF (Corr) = -161.905007688
Low Freq. = 185.5743cm-1, 243.0585cm-1

14
N -0.00295 -0.00000 -0.34561
B -1.58655 -0.00033 0.11879
H -2.06051 1.02018 -0.35783
H -1.55880 -0.00033 1.34154
H -2.06009 -1.02105 -0.35766
C 0.70551 1.23194 0.10243
H -0.01312 0.00000 -1.37448
C 0.70605 -1.23164 0.10242
H 1.75832 -1.23646 -0.23192
H 0.65956 -1.26474 1.20103
H 0.17142 -2.10456 -0.29681
H 1.75779 1.23719 -0.23186
H 0.17054 2.10462 -0.29683
H 0.65896 1.26503 1.20104

H2BNMe2
SCF = -160.644812913
H(0 K)= -160.542658
H(298 K)= -160.537208
G(298 K)= -160.569957
SCF (Corr) = -160.713428510
Low Freq. = 210.4409cm-1, 216.7701cm-1

12
C 1.22143 -0.65525 0.00000
N 0.00000 0.15126 -0.00003
C -1.22143 -0.65525 0.00000
B -0.00000 1.55271 0.00009
H 1.05686 2.13381 -0.00014
H -1.05687 2.13381 -0.00015
H -1.26482 -1.30875 -0.89312
H -1.26447 -1.30919 0.89282
H -2.10056 0.00443 0.00033
H 1.26482 -1.30874 -0.89312
H 2.10056 0.00444 0.00033

[Me2HNBH2NHMe2]+
SCF = -296.227493166
H(0 K)= -296.015344
H(298 K)= -296.005335
G(298 K)= -296.049496
SCF (Corr) = -296.424224963
Low Freq. = 70.0970cm-1, 93.6370cm-1

23
0.0000000000
N -1.32023 0.10634 -0.22792
B 0.00004 -0.79905 -0.00003
N 1.32027 0.10636 0.22795
H 0.18322 -1.44059 -1.00916
H -0.18312 -1.44084 1.00895
H -1.21350 0.66402 -1.08931
C -1.64339 1.05226 0.89333
C -2.47982 -0.82770 -0.47947
C 1.64325 1.05231 -0.89333
H 1.21355 0.66402 1.08935
C 2.47993 -0.82765 0.47948
H -3.38910 -0.24357 -0.68589
H -2.23641 -1.47229 -1.33468
H -2.62411 -1.44842 0.41569
H -2.59457 1.56953 0.69566
H -1.72324 0.47082 1.82322
H -0.84733 1.80594 0.99349
H 3.38932 -0.24344 0.68514
H 2.23683 -1.47173 1.33516
H 2.62374 -1.44888 -0.41540
H 2.59472 1.56921 -0.69607
H 1.72242 0.47096 -1.82333
H 0.84741 1.80631 -0.99298

H3BNMe3
SCF = -201.129588460
H(0 K)= -200.978712
H(298 K)= -200.971659
G(298 K)= -201.007875
SCF (Corr) = -201.226873730
Low Freq. = 191.0001cm-1, 278.4538cm-1

17
C -0.49327 1.21981 -0.70289
N 0.00467 0.00000 0.00046
C -0.49329 -1.21812 -0.70580
B 1.66367 -0.00001 0.00187
H 1.98509 1.02069 0.59262
H 1.98582 0.00140 -1.17721
H 1.98507 -1.02215 0.59015
C -0.49560 -0.00168 1.40675
H -1.59824 -1.23998 -0.71952
H -0.10064 -1.20902 -1.73239
H -0.10236 -2.10436 -0.18630
H -1.59822 1.24172 -0.71657

```

H -0.10234 2.10480 -0.18128
H -0.10061 1.21315 -1.72950
H -1.60086 -0.00170 1.43020
H -0.10539 -0.89582 1.91335
H -0.10539 0.89125 1.91548

NHMe₂

SCF = -135.162935951
H(0 K) = -135.072932
H(298 K) = -135.068506
G(298 K) = -135.098406
SCF (Corr) = -135.223085470
Low Freq. = 244.6655cm⁻¹, 265.6521cm⁻¹

10

C -1.21504 -0.22381 0.02066
N 0.00000 0.57276 -0.15198
C 1.21513 -0.22394 0.02059
H -0.00001 1.32901 0.54062
H -1.27371 -0.78672 0.98349
H -1.28237 -0.96724 -0.79457
H 1.27396 -0.78553 0.98412
H 1.28177 -0.96796 -0.79409
H 2.10211 0.42784 -0.05201
H -2.10224 0.42775 -0.05122

[NH₂Me₂]⁺

SCF = -135.534960093
H(0 K) = -135.429636
H(298 K) = -135.425081
G(298 K) = -135.455417
SCF (Corr) = -135.675594180
Low Freq. = 196.2712cm⁻¹, 261.0534cm⁻¹

11

C 1.27255 -0.27757 -0.00000
N 0.00008 0.54388 -0.00000
C -1.27266 -0.27757 0.00001
H -0.00003 1.16824 -0.82438
H 1.28122 -0.90362 -0.90245
H 1.27923 -0.90665 0.90035
H -1.27949 -0.90609 -0.90073
H -1.28093 -0.90406 0.90214
H -2.13453 0.40384 -0.00140
H 2.13459 0.40365 0.00215
H 0.00007 1.16834 0.82429

[Rh(PONOP)(H₂)⁺, 1

SCF = -1153.88317208
H(0 K) = -1153.312833
H(298 K) = -1153.276863
G(298 K) = -1153.377241
SCF (Corr) = -1824.15172136
Low Freq. = 23.7718cm⁻¹, 31.9989cm⁻¹

68

C -0.00006 4.22566 -0.22320
C 1.21797 3.53617 -0.18141
C 1.18276 2.13725 -0.09564
N -0.00001 1.44128 -0.05219
C -1.18281 2.13722 -0.09546
C -1.21806 3.53613 -0.18127
O 2.34607 1.45595 -0.05151
P 2.28446 -0.31333 0.02537
C 3.21262 -0.74757 -1.59385

C 4.68946 -0.30797 -1.60753
Rh 0.00001 -0.62092 0.06101
P -2.28447 -0.31339 0.02544
C -3.21220 -0.74749 -1.59410
C -3.09239 -2.27721 -1.79381
O -2.34611 1.45589 -0.05125
H -0.00007 5.31753 -0.29063
C -3.28860 -0.56732 1.63897
C -3.66021 -2.06342 1.74170
C -2.31200 -0.19035 2.77935
C -4.54454 0.32458 1.72623
C 3.28820 -0.56717 1.63920
C 4.54398 0.32491 1.72681
C 2.31127 -0.19040 2.77936
C 3.66003 -2.06322 1.74197
C 3.09268 -2.27728 -1.79356
C 2.43469 -0.02455 -2.71910
C -4.68899 -0.30772 -1.60823
C -2.43386 -0.02452 -2.71910
H 2.84431 -0.34557 -3.69338
H 1.36072 -0.28133 -2.70122
H 2.53828 1.07036 -2.65452
H 3.55561 -2.54127 -2.76111
H 3.61399 -2.85446 -1.01342
H 2.03989 -2.60479 -1.82866
H 5.09578 -0.47286 -2.62174
H 4.80900 0.76178 -1.37237
H 5.30737 -0.89776 -0.91204
H 2.81077 -0.36923 3.74853
H 2.02929 0.87527 2.74302
H 1.38883 -0.79515 2.74866
H 4.98049 0.20902 2.73516
H 5.31908 0.04431 0.99973
H 4.30112 1.38980 1.58781
H 4.08811 -2.25313 2.74231
H 2.78310 -2.72507 1.63163
H -1.38947 -0.79498 2.74890
H -2.81168 -0.36923 3.74841
H 4.42075 -2.35757 1.00087
H -2.03017 0.87535 2.74304
H -4.08846 -2.25337 2.74196
H -4.42075 -2.35792 1.00046
H -2.78317 -2.72513 1.63154
H -4.98124 0.20870 2.73450
H -4.30180 1.38949 1.58720
H -5.31944 0.04380 0.99900
H -5.09502 -0.47256 -2.62256
H -5.30719 -0.89742 -0.91294
H -4.80849 0.76205 -1.37313
H -2.84324 -0.34547 -3.69349
H -2.53735 1.07041 -2.65452
H -1.35992 -0.28142 -2.70089
H -3.55510 -2.54112 -2.76149
H -2.03964 -2.60486 -1.82861
H -3.61401 -2.85433 -1.01382
H 0.00027 -2.15763 0.61014
H -2.18209 4.04553 -0.21314
H 2.18198 4.04560 -0.21336
H -0.00009 -2.19107 -0.36997

[Rh(PONOP)(H₃BNMe₃)⁺, 2

SCF = -1353.83878916
H(0 K) = -1353.130289
H(298 K) = -1353.086988
G(298 K) = -1353.203033
SCF (Corr) = -2024.20916293
Low Freq. = 13.4127cm⁻¹, 25.1685cm⁻¹

83

C 1.17583 -2.68798 -0.29139
 C 1.21629 -4.08384 -0.41779
 C 0.00613 -4.78179 -0.48386
 C -1.20613 -4.08750 -0.41655
 C -1.16972 -2.69159 -0.29007
 N 0.00204 -1.97640 -0.23419
 O -2.33931 -2.02668 -0.22492
 P -2.28236 -0.28010 0.01411
 C -3.45455 0.17088 -1.45041
 C -3.95830 1.61824 -1.26700
 Rh -0.00129 0.07818 -0.05221
 B 0.01452 2.51095 -0.77660
 N -0.01074 4.00000 -0.06356
 C -1.26871 4.23239 0.71803
 O 2.34345 -2.01969 -0.22790
 P 2.28331 -0.27351 0.01390
 C 3.46071 0.18243 -1.44594
 C 4.64251 -0.79739 -1.61370
 C -3.14245 -0.21023 1.73895
 C -2.30049 -1.12648 2.65770
 C -3.04022 1.24216 2.25346
 C -4.60858 -0.68324 1.73989
 C 3.14143 -0.20530 1.73952
 C 2.29348 -1.11568 2.65862
 C 4.60474 -0.68706 1.74247
 C 3.04637 1.24831 2.25168
 C -2.56092 0.07207 -2.71107
 C -4.64771 -0.79627 -1.60912
 C 2.56794 0.10713 -2.70876
 C 3.98431 1.62106 -1.24741
 C 0.05304 5.00852 -1.17898
 H 0.00772 -5.87089 -0.58385
 H -3.15705 0.36734 -3.59387
 H -1.67913 0.72945 -2.65054
 H -2.21154 -0.96071 -2.87763
 H -4.52292 1.91687 -2.16875
 H -4.64125 1.71778 -0.40694
 H -3.12573 2.33168 -1.14982
 H -5.16418 -0.54953 -2.55469
 H -4.32130 -1.84540 -1.67016
 H -5.38565 -0.70519 -0.79985
 H -2.65916 -1.01559 3.69705
 H -2.39782 -2.18796 2.37966
 H -1.23130 -0.85183 2.63061
 H -4.96131 -0.73870 2.78608
 H -5.27665 0.01444 1.20987
 H -4.72023 -1.68657 1.29919
 H -3.48494 1.29847 3.26348
 H -1.98523 1.55537 2.33266
 H 1.22611 -0.83408 2.63111
 H 2.65283 -1.00686 3.69796
 H -3.58060 1.96079 1.61503
 H 2.38387 -2.17796 2.38110
 H 3.48754 1.30287 3.26335
 H 3.59332 1.96306 1.61467
 H 1.99357 1.56887 2.32587
 H 4.95656 -0.74184 2.78902
 H 4.71043 -1.69226 1.30454
 H 5.27743 0.00504 1.21100
 H 5.16859 -0.54026 -2.55117
 H 5.37584 -0.73062 -0.79789
 H 4.30318 -1.84091 -1.69560
 H 3.17067 0.39812 -3.58851
 H 2.20159 -0.91854 -2.88293
 H 1.69738 0.77883 -2.64575
 H 4.54925 1.92209 -2.14820

H 3.16336 2.34586 -1.11799
 H 4.67257 1.70072 -0.38960
 H -0.01235 1.76078 0.32460
 H 2.18625 -4.58129 -0.46035
 H -2.17460 -4.58791 -0.45814
 H 1.05385 2.47580 -1.38940
 H -0.98564 2.46485 -1.45200
 C 1.16625 4.21170 0.84048
 H 0.02788 6.02813 -0.76010
 H 0.98243 4.85467 -1.74415
 H -0.80523 4.85273 -1.84698
 H -1.27208 5.25264 1.13645
 H -2.13099 4.10178 0.04967
 H -1.32487 3.49694 1.53184
 H 1.15895 5.24008 1.23841
 H 1.11353 3.49290 1.66946
 H 2.08847 4.03967 0.26842

[Rh(PONOP)(H₃BNMe₂H)]⁺, 3

SCF = -1314.54155344
 H(0 K) = -1313.860279
 H(298 K) = -1313.818258
 G(298 K) = -1313.931750
 SCF (Corr) = -1984.89437408
 Low Freq. = 22.8036cm⁻¹, 25.7374cm⁻¹

80

C 0.74220 -4.08359 -0.12195
 C -0.53507 -4.65430 -0.16194
 C -1.66852 -3.83465 -0.15473
 C -1.48720 -2.44492 -0.11370
 N -0.24694 -1.85539 -0.08960
 C 0.84519 -2.68692 -0.08166
 O -2.58141 -1.65672 -0.09532
 P -2.34643 0.08650 0.00812
 C -3.24937 0.41833 1.67187
 C -3.04511 1.90809 2.03019
 Rh -0.04191 0.19796 -0.00139
 P 2.18454 -0.37873 0.02748
 C 3.18821 -0.21540 1.66208
 C 4.58274 -0.86902 1.63232
 O 2.07769 -2.13510 -0.02823
 C -3.38316 0.56685 -1.54656
 C -2.43065 0.35025 -2.74659
 C -4.63347 -0.32074 -1.73013
 C -3.78613 2.05506 -1.45962
 C 3.24388 -0.17085 -1.57348
 C 2.25030 -0.42628 -2.73322
 C 3.76613 1.27823 -1.65210
 C 4.41327 -1.17207 -1.68333
 C 3.30298 1.28921 1.99243
 C 2.31069 -0.89941 2.73752
 C -4.74881 0.06323 1.65046
 C -2.51901 -0.45990 2.71523
 H -0.64700 -5.74174 -0.19284
 H -2.96651 0.61194 -3.67720
 H -1.52946 0.97997 -2.67598
 H -2.11186 -0.70250 -2.83171
 H -4.25036 2.35009 -2.41808
 H -4.53094 2.24011 -0.66824
 H -2.91932 2.71549 -1.29368
 H -5.10823 -0.04778 -2.69016
 H -4.37742 -1.39005 -1.77361
 H -5.38332 -0.17363 -0.93992
 H -2.90845 -0.21580 3.72011
 H -2.69035 -1.53414 2.53953
 H -1.43079 -0.27281 2.70946

H -5.14897 0.15733 2.67646
H -5.33254 0.74496 1.01149
H -4.92447 -0.97298 1.31967
H -3.48489 2.09434 3.02665
H -1.97539 2.17015 2.07826
H 1.28065 -0.50118 2.73275
H 2.75250 -0.71161 3.73282
H -3.53731 2.58989 1.31869
H 2.26348 -1.98985 2.58937
H 3.80440 1.40923 2.96962
H 3.90728 1.84327 1.25262
H 2.30517 1.75388 2.07714
H 4.99514 -0.87340 2.65774
H 4.54234 -1.91387 1.28644
H 5.29317 -0.31308 0.99995
H 4.83181 -1.10741 -2.70418
H 5.23043 -0.95560 -0.98063
H 4.07911 -2.20881 -1.52479
H 2.77076 -0.25666 -3.69349
H 1.88596 -1.46685 -2.73264
H 1.37569 0.24374 -2.68535
H 4.28162 1.42563 -2.61823
H 2.93945 2.01052 -1.62031
H 4.49446 1.51201 -0.85752
H 0.00314 1.78867 0.62080
H 1.65427 -4.68215 -0.11674
H -2.68352 -4.23407 -0.17471
B -0.01025 2.58142 -0.44002
N 1.18444 3.61797 -0.05074
H 0.21815 2.13472 -1.54778
H -1.03282 3.22684 -0.35614
C 1.38757 4.62035 -1.14814
C 0.94461 4.31171 1.25620
H 2.05769 3.07617 0.04264
H 2.17919 5.33613 -0.87484
H 1.65359 4.09033 -2.07274
H 0.43829 5.15332 -1.30303
H 1.78587 4.97943 1.50096
H 0.01682 4.89477 1.16750
H 0.81861 3.55824 2.04637

[Rh(PONOP) (H)], 4

SCF = -1153.46555258
H(0 K) = -1152.904562
H(298 K) = -1152.869076
G(298 K) = -1152.968545
SCF (Corr) = -1823.69571182
Low Freq. = 26.2152cm⁻¹, 29.1469cm⁻¹

67

C -1.17777 2.14531 -0.06928
N -0.00006 1.45151 -0.02993
C 1.17759 2.14543 -0.06913
C 1.21707 3.54744 -0.14494
C -0.00019 4.24181 -0.18154
C -1.21739 3.54733 -0.14503
Rh 0.00001 -0.63960 0.06868
P -2.22529 -0.34260 0.02735
C -3.29275 -0.59340 1.61315
C -2.32993 -0.25168 2.77539
O 2.34031 1.45242 -0.03150
P 2.22526 -0.34241 0.02733
C 3.29260 -0.59364 1.61315
C 2.32966 -0.25254 2.77547
O -2.34044 1.45219 -0.03200
C 3.19500 -0.73413 -1.59196
C 4.66587 -0.28080 -1.61294

C 3.08544 -2.25982 -1.82022
C 2.40879 -0.00710 -2.70787
C -3.19475 -0.73461 -1.59206
C -3.08482 -2.26025 -1.82049
C -4.66570 -0.28152 -1.61322
C -2.40858 -0.00734 -2.70783
C -4.53826 0.30992 1.70867
C -3.68015 -2.08576 1.69557
C 3.68027 -2.08596 1.69495
C 4.53796 0.30986 1.70911
H -0.00024 5.33462 -0.24097
H -2.83132 -0.46736 3.73804
H -1.40011 -0.84314 2.71293
H -2.05278 0.81603 2.76930
H -4.11566 -2.29399 2.69067
H -4.43714 -2.36173 0.94217
H -2.80217 -2.74278 1.56895
H -4.98266 0.20086 2.71601
H -4.27759 1.37065 1.56700
H -5.31521 0.04332 0.97691
H -2.80677 -0.31746 -3.69200
H -2.50563 1.08765 -2.62785
H -1.33533 -0.26607 -2.66524
H -5.07606 -0.42881 -2.63027
H -5.29284 -0.87037 -0.92368
H -4.77157 0.78661 -1.36198
H -3.49713 -2.50616 -2.81715
H -2.03351 -2.59191 -1.78538
H 1.33563 -0.26622 -2.66554
H 2.80728 -0.31701 -3.69198
H -3.65296 -2.84090 -1.07521
H 2.50543 1.08792 -2.62781
H 3.49808 -2.50579 -2.81673
H 3.65349 -2.84022 -1.07466
H 2.03418 -2.59167 -1.78536
H 5.07623 -0.42762 -2.63005
H 4.77156 0.78724 -1.36126
H 5.29312 -0.86982 -0.92365
H 4.98236 0.20037 2.71640
H 5.31496 0.04373 0.97723
H 4.27713 1.37062 1.56796
H 2.83107 -0.46838 3.73807
H 2.05223 0.81510 2.76969
H 1.39999 -0.84422 2.71278
H 4.11639 -2.29443 2.68973
H 2.80232 -2.74309 1.56865
H 4.43686 -2.36162 0.94103
H 0.00040 -2.24721 0.13359
H 2.18241 4.05580 -0.17371
H -2.18278 4.05559 -0.17381

[Rh(PONOP)]⁺

SCF = -1152.65482672
H(0 K) = -1152.100117
H(298 K) = -1152.064887
G(298 K) = -1152.164525
SCF (Corr) = -1822.92872472
Low Freq. = 20.3394cm⁻¹, 31.2002cm⁻¹

66

C -1.21179 3.49607 -0.41308
C 0.00002 4.18894 -0.50320
C 1.21182 3.49606 -0.41308
C 1.18251 2.10794 -0.23155
N 0.00000 1.40158 -0.13859
C -1.18249 2.10795 -0.23155
O 2.35555 1.44576 -0.14135

P 2.28202 -0.30042 0.05136
 C 3.30010 -0.47236 1.66517
 C 3.62693 -1.96922 1.86659
 Rh -0.00001 -0.57518 0.10612
 P -2.28202 -0.30039 0.05136
 C -3.30010 -0.47234 1.66517
 C -4.58253 0.38547 1.67292
 O -2.35555 1.44579 -0.14135
 C 3.17752 -0.89788 -1.53349
 C 2.48301 -0.16756 -2.70686
 C 4.69272 -0.62552 -1.56700
 C 2.88578 -2.41569 -1.63167
 C -3.17753 -0.89787 -1.53348
 C -2.48281 -0.16782 -2.70690
 C -2.88605 -2.41574 -1.63147
 C -4.69268 -0.62526 -1.56715
 C -3.62702 -1.96919 1.86651
 C -2.35296 0.01157 2.78994
 C 4.58259 0.38537 1.67285
 C 2.35301 0.01167 2.78993
 H 0.00003 5.27305 -0.64562
 H 2.85611 -0.59001 -3.65686
 H 1.38739 -0.30427 -2.68034
 H 2.70334 0.91178 -2.70677
 H 3.30033 -2.79841 -2.58148
 H 3.34661 -2.99535 -0.81548
 H 1.79986 -2.62166 -1.64020
 H 5.08251 -0.91876 -2.55864
 H 4.92638 0.44160 -1.42275
 H 5.24282 -1.21483 -0.81617
 H 2.86142 -0.11439 3.76276
 H 2.09958 1.07947 2.68194
 H 1.41156 -0.56407 2.81424
 H 5.03144 0.33015 2.68111
 H 5.33824 0.03147 0.95732
 H 4.36724 1.44451 1.46145
 H 4.07713 -2.10385 2.86618
 H 2.72520 -2.60658 1.82892
 H -1.41155 -0.56424 2.81421
 H -2.86136 -0.11451 3.76278
 H 4.35408 -2.34456 1.12828
 H -2.09946 1.07936 2.68200
 H -4.07727 -2.10384 2.86608
 H -4.35416 -2.34445 1.12815
 H -2.72532 -2.60660 1.82884
 H -5.03135 0.33026 2.68120
 H -4.36713 1.44460 1.46153
 H -5.33823 0.03164 0.95741
 H -5.08246 -0.91859 -2.55876
 H -5.24293 -1.21436 -0.81626
 H -4.92617 0.44192 -1.42308
 H -2.85591 -0.59033 -3.65688
 H -2.70296 0.91156 -2.70697
 H -1.38721 -0.30469 -2.68028
 H -3.30063 -2.79852 -2.58124
 H -1.80017 -2.62190 -1.63992
 H -3.34701 -2.99521 -0.81521
 H -2.18069 3.99352 -0.47880
 H 2.18072 3.99350 -0.47880

H₂/DMAB Exchange in 1

TS(1-3)1

SCF = -1153.88178801
 H(0 K)= -1153.312249
 H(298 K)= -1153.276644
 G(298 K)= -1153.376107

SCF (Corr) = -1824.14866160
 Low Freq. = -155.4258cm⁻¹, 25.2898cm⁻¹

68
 C -0.00000 4.23576 -0.23625
 C 1.22173 3.54991 -0.19536
 C 1.18488 2.15078 -0.10778
 N -0.00000 1.46571 -0.05869
 C -1.18488 2.15078 -0.10779
 C -1.22173 3.54991 -0.19537
 O 2.34270 1.45646 -0.07313
 P 2.28402 -0.32125 0.01312
 C 3.22799 -0.75908 -1.59299
 C 4.69902 -0.29846 -1.58720
 Rh 0.00000 -0.63399 0.08117
 P -2.28402 -0.32125 0.01312
 C -3.22799 -0.75909 -1.59298
 C -3.13268 -2.29197 -1.77980
 O -2.34270 1.45646 -0.07314
 H -0.00000 5.32768 -0.30528
 C -3.26427 -0.56066 1.64294
 C -3.64772 -2.05326 1.75320
 C -2.25695 -0.19577 2.76103
 C -4.50727 0.34527 1.75616
 C 3.26427 -0.56066 1.64293
 C 4.50727 0.34528 1.75616
 C 2.25695 -0.19579 2.76104
 C 3.64774 -2.05326 1.75318
 C 3.13267 -2.29196 -1.77981
 C 2.45801 -0.05279 -2.73413
 C -4.69902 -0.29846 -1.58720
 C -2.45801 -0.05281 -2.73413
 H 2.89027 -0.37223 -3.69901
 H 1.38808 -0.32391 -2.73625
 H 2.54495 1.04369 -2.67274
 H 3.59869 -2.55465 -2.74615
 H 3.66568 -2.85250 -0.99576
 H 2.08697 -2.64097 -1.80757
 H 5.12354 -0.46802 -2.59299
 H 4.79939 0.77519 -1.36118
 H 5.31338 -0.87272 -0.87584
 H 2.73612 -0.36343 3.74239
 H 1.95879 0.86550 2.71698
 H 1.34850 -0.82227 2.71504
 H 4.93004 0.22726 2.77016
 H 5.29627 0.07803 1.03888
 H 4.25465 1.40816 1.61959
 H 4.05186 -2.23984 2.76412
 H 2.78022 -2.72215 1.61723
 H -1.34850 -0.82224 2.71504
 H -2.73612 -0.36340 3.74239
 H 4.43111 -2.33722 1.03192
 H -1.95880 0.86552 2.71696
 H -4.05184 -2.23984 2.76414
 H -4.43109 -2.33723 1.03194
 H -2.78019 -2.72214 1.61725
 H -4.93004 0.22726 2.77016
 H -4.25466 1.40815 1.61958
 H -5.29628 0.07801 1.03889
 H -5.12354 -0.46802 -2.59300
 H -5.31339 -0.87271 -0.87584
 H -4.79938 0.77520 -1.36119
 H -2.89027 -0.37225 -3.69901
 H -2.54493 1.04368 -2.67275
 H -1.38807 -0.32393 -2.73624
 H -3.59870 -2.55466 -2.74614
 H -2.08698 -2.64099 -1.80755
 H -3.66570 -2.85250 -0.99575

H 0.00000 -2.12185 0.57898
H -2.18305 4.06413 -0.23226
H 2.18304 4.06413 -0.23226
H -0.00000 -1.80836 -0.90724

Int(1-3)1

SCF = -1153.88275501
H(0 K)= -1153.312161
H(298 K)= -1153.276203
G(298 K)= -1153.376347
SCF (Corr) = -1824.15168194
Low Freq. = 23.5197cm-1, 35.9190cm-1

68

C -0.00000 4.25089 -0.14769
C -1.22170 3.56314 -0.12744
C -1.18146 2.16167 -0.09096
N 0.00000 1.47808 -0.08379
C 1.18146 2.16167 -0.09096
C 1.22169 3.56315 -0.12744
O -2.34024 1.45937 -0.06380
P -2.28076 -0.31396 0.03908
C -3.28404 -0.59072 1.64244
C -4.76344 -0.17660 1.50723
Rh 0.00000 -0.64066 -0.00213
P 2.28076 -0.31395 0.03908
C 3.28404 -0.59072 1.64244
C 3.15898 -2.09023 2.00234
O 2.34024 1.45937 -0.06380
H -0.00000 5.34457 -0.17460
C 3.19137 -0.74087 -1.59142
C 3.59752 -2.23047 -1.54214
C 2.11416 -0.53272 -2.68502
C 4.40526 0.16335 -1.88434
C -3.19137 -0.74088 -1.59141
C -4.40532 0.16329 -1.88429
C -2.11419 -0.53264 -2.68502
C -3.59744 -2.23050 -1.54218
C -3.15894 -2.09022 2.00237
C -2.60001 0.26376 2.73506
C 4.76343 -0.17655 1.50726
C 2.59997 0.26371 2.73508
H -3.09346 0.05497 3.70072
H -1.53068 0.01566 2.84751
H -2.69285 1.34276 2.53425
H -3.65170 -2.25783 2.97656
H -3.65186 -2.74658 1.26798
H -2.10664 -2.40542 2.09705
H -5.24350 -0.26065 2.49855
H -4.87463 0.86694 1.17155
H -5.32041 -0.83425 0.82119
H -2.53667 -0.80610 -3.66872
H -1.78448 0.51831 -2.74931
H -1.23272 -1.18017 -2.51544
H -4.78116 -0.07573 -2.89558
H -5.23418 0.00255 -1.17993
H -4.13552 1.23062 -1.86877
H -3.95592 -2.53236 -2.54252
H -2.75008 -2.88830 -1.28204
H 1.23273 -1.18030 -2.51540
H 2.53664 -0.80619 -3.66871
H -4.41979 -2.41501 -0.83238
H 1.78439 0.51820 -2.74932
H 3.95600 -2.53234 -2.54248
H 4.41989 -2.41492 -0.83235
H 2.75020 -2.88830 -1.28197
H 4.78109 -0.07566 -2.89565

H 4.13541 1.23067 -1.86883
H 5.23416 0.00267 -1.18001
H 5.24347 -0.26060 2.49859
H 5.32043 -0.83418 0.82123
H 4.87459 0.86700 1.17160
H 3.09342 0.05491 3.70074
H 2.69278 1.34271 2.53430
H 1.53065 0.01558 2.84750
H 3.65174 -2.25785 2.97652
H 2.10670 -2.40546 2.09700
H 3.65193 -2.74656 1.26792
H 0.00000 -2.21706 0.03489
H 2.18328 4.07833 -0.13477
H -2.18328 4.07832 -0.13477
H 0.00000 -0.98046 1.47553

TS(1-3)2

SCF = -1315.70998851
H(0 K)= -1315.013927
H(298 K)= -1314.971150
G(298 K)= -1315.087681
SCF (Corr) = -1986.06165227
Low Freq. = -34.5373cm-1, 17.5425cm-1

82

C -0.45137 -2.79662 2.94585
C 0.81771 -2.82844 3.54128
C 1.89420 -2.12319 2.98677
C 1.65490 -1.36978 1.82673
N 0.41487 -1.28891 1.26510
C -0.60967 -2.01896 1.78918
O 2.68055 -0.71368 1.23672
P 2.40217 0.16884 -0.28307
C 3.61593 -0.81280 -1.41105
C 3.85199 0.01109 -2.69665
Rh 0.11375 -0.12880 -0.50172
P -2.00832 -1.03475 -0.31722
C -2.58470 -2.43162 -1.51058
C -3.55338 -3.42916 -0.83669
O -1.81129 -1.99902 1.16098
C 3.04841 1.89570 0.24333
C 2.21523 2.27670 1.49010
C 4.54759 1.93347 0.59666
C 2.73204 2.86681 -0.91789
C -3.44638 0.10270 0.26963
C -2.94760 0.75640 1.58034
C -3.63365 1.18908 -0.81572
C -4.77360 -0.63038 0.54288
C -3.23322 -1.76585 -2.74499
C -1.31850 -3.20294 -1.95009
C 4.95041 -1.13397 -0.70125
C 2.92361 -2.14684 -1.77399
H 0.97372 -3.42645 4.44403
H 2.48122 3.30831 1.78180
H 1.13238 2.27334 1.28058
H 2.43087 1.61630 2.34539
H 2.98002 3.89221 -0.59069
H 3.33071 2.65507 -1.81800
H 1.66438 2.85866 -1.18877
H 4.77721 2.92995 1.01580
H 4.82065 1.18333 1.35614
H 5.19076 1.80140 -0.28764
H 3.63019 -2.75831 -2.36341
H 2.64354 -2.73118 -0.88146
H 2.02380 -1.99204 -2.39158
H 5.55349 -1.76851 -1.37505
H 5.54432 -0.23805 -0.47633

H	4.79200	-1.69216	0.23434
H	4.40344	-0.61491	-3.42086
H	2.90712	0.31811	-3.17758
H	-0.63677	-2.57377	-2.54522
H	-1.62954	-4.05105	-2.58605
H	4.46184	0.90970	-2.51160
H	-0.76158	-3.61753	-1.09317
H	-3.41301	-2.54082	-3.51134
H	-4.20778	-1.30781	-2.51111
H	-2.58018	-0.99991	-3.19831
H	-3.75783	-4.24561	-1.55213
H	-3.11399	-3.87701	0.06792
H	-4.51903	-2.97954	-0.56949
H	-5.48470	0.08928	0.98862
H	-5.23997	-1.01462	-0.37785
H	-4.65253	-1.46020	1.25725
H	-3.70605	1.48783	1.91573
H	-2.82179	0.01724	2.38697
H	-1.99779	1.29961	1.43510
H	-4.38858	1.91343	-0.45345
H	-2.69204	1.72465	-1.02679
H	-4.01792	0.78012	-1.76355
H	0.41328	-1.18936	-1.53419
H	-1.29834	-3.35874	3.34185
H	2.89706	-2.15335	3.41516
H	-0.09048	0.68639	-1.83165
H	-0.80759	2.65325	0.24608
B	-0.81190	3.73043	-0.36697
H	0.14586	4.42231	-0.06699
H	-0.94149	3.56069	-1.56738
N	-2.12755	4.56141	0.13196
C	-2.29919	5.82095	-0.65811
H	-2.94831	3.96781	-0.05582
C	-2.10198	4.84696	1.59842
H	-3.00746	5.39255	1.91173
H	-2.02422	3.89619	2.14379
H	-1.20873	5.45221	1.81031
H	-3.19469	6.37284	-0.32801
H	-1.40163	6.43886	-0.51052
H	-2.37899	5.56032	-1.72207

Int(1-3)2

SCF = -1315.71949660
H(0 K) = -1315.021663
H(298 K) = -1314.979244
G(298 K) = -1315.092656
SCF (Corr) = -1986.07313188
Low Freq. = 18.8863cm⁻¹, 23.0869cm⁻¹

82

C	1.38608	-1.62013	1.72678
C	1.52242	-2.54473	2.77479
C	0.35497	-3.10168	3.31131
C	-0.90277	-2.76808	2.79017
C	-0.94899	-1.83410	1.74510
N	0.16823	-1.22072	1.26711
O	-2.14650	-1.53587	1.17975
P	-2.18732	-0.52076	-0.26430
C	-2.67313	-1.80725	-1.62870
C	-2.41533	-1.12163	-2.99134
Rh	0.03536	0.18981	-0.35529
P	2.35921	-0.03128	-0.24482
C	3.26383	-1.10566	-1.57758
C	4.50127	-1.83635	-1.00595
O	2.49991	-1.12407	1.14028
C	-3.68280	0.55554	0.31325
C	-3.18939	1.29882	1.57541

C	-4.00041	1.54196	-0.83178
C	-4.94760	-0.23580	0.71703
C	3.48452	1.38878	0.41993
C	2.97709	1.69703	1.84891
C	4.98598	1.04771	0.50580
C	3.27315	2.59761	-0.52059
C	-1.73730	-3.02571	-1.45639
C	-4.13089	-2.30619	-1.56702
C	2.27987	-2.17971	-2.09159
C	3.65067	-0.17452	-2.74902
B	-0.14908	3.05611	1.05314
N	-1.21875	3.93472	0.21534
C	-0.79557	4.18104	-1.19972
C	-1.49405	5.22481	0.92938
H	0.42712	-3.82630	4.12765
H	-1.91008	-3.71892	-2.29885
H	-0.67131	-2.74701	-1.46917
H	-1.94717	-3.57128	-0.52238
H	-2.61743	-1.84926	-3.79777
H	-3.08133	-0.25760	-3.15745
H	-1.37434	-0.77573	-3.09218
H	-4.24682	-3.11876	-2.30659
H	-4.39670	-2.71764	-0.58100
H	-4.85518	-1.52273	-1.83800
H	-3.91845	2.08899	1.83382
H	-3.12922	0.61406	2.43649
H	-2.19304	1.75241	1.46223
H	-5.61897	0.45250	1.26215
H	-5.51031	-0.62675	-0.14000
H	-4.70884	-1.06754	1.39838
H	-4.73952	2.28649	-0.48398
H	-3.10282	2.08082	-1.18719
H	1.88887	1.84774	1.89759
H	3.45272	2.63299	2.19221
H	-4.44073	1.03467	-1.70653
H	3.25751	0.89576	2.55027
H	3.80469	3.46968	-0.09888
H	3.68270	2.41809	-1.52795
H	2.21009	2.86409	-0.61208
H	5.49620	1.89534	0.99872
H	5.17844	0.15074	1.11530
H	5.45506	0.92255	-0.48272
H	4.90124	-2.49988	-1.79333
H	5.31006	-1.15647	-0.71098
H	4.23924	-2.46398	-0.14002
H	2.81984	-2.83542	-2.79818
H	1.89474	-2.81783	-1.27815
H	1.42768	-1.73837	-2.63241
H	4.03335	-0.79134	-3.58184
H	2.78432	0.39314	-3.13153
H	4.44676	0.53719	-2.47854
H	-0.03766	1.06850	-1.66305
H	2.51824	-2.81695	3.12751
H	-1.82713	-3.21895	3.15412
H	-0.07520	1.90740	0.48885
H	0.91000	3.63182	0.95632
H	-0.55555	2.91899	2.18688
H	-2.10571	3.40935	0.18417
H	-2.21591	5.83255	0.36072
H	-1.88654	5.00035	1.93038
H	-0.54425	5.76948	1.03088
H	-1.57069	4.74590	-1.74253
H	0.13990	4.75860	-1.18048
H	-0.61186	3.21036	-1.68358
H	0.14649	-0.94248	-1.38460

TS(1-3)3

SCF = -1315.69458675
H(0 K) = -1315.001666
H(298 K) = -1314.958168
G(298 K) = -1315.074348
SCF (Corr) = -1986.05099643
Low Freq. = -307.5623cm⁻¹, 17.0405cm⁻¹

82

C -1.37778 -2.53853 -0.18823
C -1.51309 -3.91843 -0.39385
C -0.35747 -4.68021 -0.59646
C 0.89549 -4.05616 -0.59799
C 0.95155 -2.67325 -0.38463
N -0.16189 -1.90061 -0.16670
O 2.16149 -2.06791 -0.40704
P 2.22776 -0.36837 0.01917
C 3.33015 -0.51916 1.59857
C 3.39960 0.86713 2.27755
Rh -0.01145 0.12564 0.23023
P -2.32674 -0.05413 0.08446
C -3.42320 0.23075 1.64295
C -4.90719 -0.12758 1.42055
O -2.49453 -1.80247 -0.01159
C 3.21262 0.25499 -1.52046
C 2.16047 0.43119 -2.64095
C 3.85659 1.61736 -1.18759
C 4.28618 -0.74568 -2.00181
C -3.22918 0.40366 -1.56635
C -2.15444 0.26136 -2.67019
C -4.39904 -0.55252 -1.88752
C -3.72632 1.86439 -1.50341
C 2.59669 -1.51030 2.53354
C 4.75008 -1.04997 1.31653
C -2.85318 -0.67520 2.75964
C -3.28139 1.71413 2.05396
B -0.29916 2.98571 -0.55263
N 0.82590 4.10656 -0.21716
C 1.15399 4.20342 1.23967
C 0.40061 5.43954 -0.76139
H -0.43295 -5.75889 -0.75875
H 3.12656 -1.54047 3.50249
H 1.55451 -1.20763 2.72936
H 2.59152 -2.53172 2.12156
H 3.97753 0.77717 3.21490
H 3.90681 1.62174 1.65403
H 2.39678 1.24009 2.54565
H 5.25537 -1.23464 2.28203
H 4.73385 -2.00292 0.76414
H 5.36950 -0.32690 0.76212
H 2.67029 0.79312 -3.55275
H 1.67008 -0.52425 -2.89014
H 1.37310 1.15169 -2.36760
H 4.71013 -0.36882 -2.95029
H 5.11711 -0.86181 -1.29240
H 3.85460 -1.73860 -2.19901
H 4.24616 2.07325 -2.11539
H 3.12573 2.32393 -0.75206
H -1.29146 0.92231 -2.49462
H -2.60954 0.53056 -3.64099
H 4.70038 1.52719 -0.48450
H -1.78591 -0.77510 -2.75264
H -4.11485 2.14451 -2.49951
H -4.55275 1.99432 -0.78567
H -2.92052 2.57121 -1.25120
H -4.77901 -0.29667 -2.89339
H -4.07934 -1.60537 -1.90758
H -5.23942 -0.45751 -1.18589
H -5.43714 -0.03456 2.38597

H -5.40443 0.55280 0.71170
H -5.03596 -1.16446 1.07117
H -3.41070 -0.47294 3.69184
H -2.97208 -1.74335 2.51950
H -1.78797 -0.47747 2.95960
H -3.84376 1.87700 2.99102
H -2.23044 1.98999 2.24014
H -3.68929 2.40396 1.29812
H 0.03801 1.17221 2.09514
H -2.51326 -4.35440 -0.39586
H 1.82540 -4.60335 -0.75987
H 0.26024 1.86174 -0.25023
H -1.26037 3.24258 0.13595
H -0.48022 3.00433 -1.75114
H 1.68939 3.83981 -0.71340
H 1.16489 6.20337 -0.54631
H 0.24556 5.34708 -1.84471
H -0.55032 5.71589 -0.28352
H 1.93795 4.95806 1.41251
H 0.23767 4.48628 1.77752
H 1.48907 3.21876 1.59420
H 0.03499 0.36773 2.09022

Dehydrogenation via Amine Nu Attack

3.NMe2H

SCF = -1449.71290122
H(0 K) = -1448.940583
H(298 K) = -1448.892073
G(298 K) = -1449.024914
SCF (Corr) = -2120.12257011
Low Freq. = 10.1720cm⁻¹, 13.0852cm⁻¹

90

C 2.39041 2.28752 -0.48043
C 3.62505 2.89578 -0.74744
C 4.75241 2.07999 -0.89038
C 4.63262 0.69192 -0.75870
C 3.36573 0.15610 -0.49166
N 2.23779 0.92758 -0.36462
O 3.25223 -1.18242 -0.34885
P 1.65658 -1.83647 0.00800
C 1.56497 -3.02495 -1.51331
C 0.42149 -4.03940 -1.30754
Rh 0.39669 0.08955 0.05817
B -1.89225 -0.71332 0.01362
N -2.38712 -2.16812 0.53525
C -3.38924 -2.77572 -0.40704
O 1.30730 3.07711 -0.32837
P -0.22816 2.30808 0.06403
C -1.25636 3.07451 -1.37756
C -0.85809 4.53340 -1.69026
C 2.08374 -2.72736 1.66064
C 2.61728 -1.61275 2.59159
C 0.76543 -3.27960 2.24671
C 3.13132 -3.84970 1.53594
C -0.55627 3.13404 1.76860
C 0.66476 2.76172 2.64251
C -0.70157 4.66676 1.70455
C -1.82583 2.48854 2.36898
C 1.23171 -2.10240 -2.71089
C 2.88882 -3.76473 -1.80221
C -0.94184 2.19198 -2.60915
C -2.76040 2.98549 -1.03998
C -2.94628 -2.12256 1.92453
H 5.72851 2.52736 -1.09794
H 1.10556 -2.72327 -3.61673

H 0.30454 -1.52868 -2.54687
H 2.04660 -1.38679 -2.91025
H 0.30925 -4.64689 -2.22369
H 0.61665 -4.73851 -0.47727
H -0.54968 -3.53971 -1.14244
H 2.79590 -4.27252 -2.77951
H 3.73969 -3.06975 -1.86584
H 3.12161 -4.53537 -1.05376
H 2.74483 -2.02602 3.60850
H 3.59607 -1.23590 2.25499
H 1.91511 -0.76225 2.64708
H 3.41943 -4.18151 2.55015
H 2.73968 -4.73254 1.00561
H 4.04580 -3.50664 1.02681
H 0.96747 -3.72634 3.23689
H 0.02871 -2.47134 2.39529
H 0.83511 1.67084 2.65286
H 0.47506 3.09466 3.67895
H 0.32023 -4.07369 1.62199
H 1.58539 3.25620 2.29289
H -1.97436 2.88536 3.38957
H -2.73468 2.71639 1.78973
H -1.72738 1.39309 2.44216
H -0.75004 5.06072 2.73614
H 0.15820 5.14385 1.20737
H -1.62666 4.97980 1.19470
H -1.41736 4.85583 -2.58744
H -1.11019 5.23050 -0.87847
H 0.21569 4.62892 -1.91112
H -1.50186 2.58291 -3.47832
H 0.13051 2.21654 -2.86716
H -1.23518 1.14211 -2.45039
H -3.33987 3.28402 -1.93253
H -3.06681 1.96183 -0.76907
H -3.04553 3.66994 -0.22408
H -0.98300 -0.41976 0.93339
H 3.67103 3.98266 -0.82959
H 5.48427 0.01635 -0.85083
H -2.81255 0.04824 0.21540
H -1.56026 -0.80891 -1.15341
H -1.56111 -2.78579 0.55792
H -3.22219 -3.13432 2.26205
H -2.19811 -1.68940 2.60370
H -3.83752 -1.48007 1.90860
H -3.65440 -3.78921 -0.06330
H -4.29789 -2.13904 -0.42797
H -2.94325 -2.82278 -1.41045
N -6.33668 -1.11551 -0.60408
C -7.21629 -2.01592 -1.36665
C -7.00063 -0.59673 0.60146
H -6.09750 -0.31864 -1.20517
H -8.20059 -1.56983 -1.62992
H -6.71603 -2.32527 -2.29910
H -7.41384 -2.92402 -0.77059
H -7.97958 -0.10620 0.40445
H -7.18616 -1.42891 1.30325
H -6.34480 0.13339 1.10458

TS (3-4)B

SCF = -1449.67867447
H(0 K)= -1448.907794
H(298 K)= -1448.860366
G(298 K)= -1448.987063
SCF (Corr) = -2120.09513563
Low Freq. = -390.6967cm⁻¹, 17.4106cm⁻¹

C 3.03492 1.32063 -0.18007
C 4.43101 1.44354 -0.23362
C 5.20068 0.27648 -0.15169
C 4.57944 -0.97204 -0.02560
C 3.17818 -1.01356 0.02121
N 2.40361 0.11408 -0.04014
O 2.56496 -2.21354 0.13227
P 0.79569 -2.24093 0.01280
C 0.62873 -3.21534 -1.63929
C -0.86986 -3.22289 -2.01771
Rh 0.31758 -0.01220 -0.00498
B -3.03171 -0.37567 -0.30966
N -3.25363 0.51744 1.00020
C -3.35541 -0.28789 2.25954
O 2.27713 2.43669 -0.27514
P 0.52362 2.25435 -0.06468
C -0.00694 3.22392 -1.64239
C 0.82144 4.49209 -1.93301
C 0.47490 -3.32159 1.57336
C 0.61662 -2.34152 2.76262
C -0.97105 -3.85837 1.50310
C 1.47775 -4.47941 1.75822
C 0.38246 3.29797 1.55752
C 1.33664 2.61454 2.56557
C 0.76579 4.78159 1.40145
C -1.06217 3.17318 2.08872
C 1.40323 -2.37099 -2.67936
C 1.19344 -4.64722 -1.60581
C 0.19512 2.21141 -2.79609
C -1.50729 3.56479 -1.51746
C -4.32626 1.55777 0.92016
H 6.29190 0.33998 -0.19230
H 1.22647 -2.79345 -3.68522
H 1.06230 -1.32033 -2.68047
H 2.48927 -2.38677 -2.49367
H -0.98170 -3.66811 -3.02337
H -1.47878 -3.82328 -1.32187
H -1.27888 -2.19914 -2.04632
H 1.18030 -5.06136 -2.63083
H 2.23619 -4.67252 -1.25067
H 0.58841 -5.32086 -0.97751
H 0.34930 -2.86467 3.69936
H 1.65311 -1.97900 2.86402
H -0.03411 -1.45705 2.64425
H 1.29831 -4.94579 2.74441
H 1.36651 -5.26576 0.99802
H 2.51853 -4.12156 1.73976
H -1.23754 -4.31211 2.47518
H -1.70246 -3.05823 1.29190
H 1.14332 1.52889 2.63293
H 1.18177 3.05780 3.56629
H -1.08609 -4.64103 0.73502
H 2.39262 2.76391 2.29139
H -1.16248 3.76170 3.01907
H -1.81585 3.55428 1.37814
H -1.29067 2.12225 2.34542
H 0.80960 5.24911 2.40249
H 1.75637 4.90190 0.93535
H 0.02614 5.34676 0.81132
H 0.55471 4.86308 -2.93959
H 0.62391 5.30642 -1.22114
H 1.90160 4.27960 -1.92968
H -0.18002 2.65619 -3.73644
H 1.26213 1.97332 -2.93994
H -0.34298 1.26596 -2.60780
H -1.86474 3.98336 -2.47586
H -2.11226 2.66365 -1.30919
H -1.70371 4.32095 -0.73847

H -1.32356 -0.20943 -0.11143
H 4.87602 2.43394 -0.34071
H 5.14238 -1.90496 0.03038
H -2.96608 0.22656 -1.34416
H -2.91878 -1.55598 -0.14172
H -2.33803 1.00578 1.04416
H -4.22566 2.25610 1.76560
H -4.22922 2.10156 -0.02910
H -5.30721 1.06777 0.96503
H -3.41507 0.38177 3.13197
H -4.25608 -0.91482 2.20978
H -2.46102 -0.92193 2.33321
N -5.15702 -0.86205 -0.88577
C -6.02563 -1.65250 0.01404
C -5.92763 0.10019 -1.70548
H -4.70970 -1.52067 -1.53421
H -6.84436 -2.16762 -0.52546
H -5.41916 -2.40920 0.53679
H -6.48804 -0.98806 0.76402
H -6.70227 -0.39573 -2.32167
H -6.43426 0.82766 -1.05071
H -5.23870 0.64502 -2.36975

[4•HMe₂NBH₂NMe₂H]⁺

SCF = -1449.71627263
H(0 K) = -1448.943769
H(298 K) = -1448.896100
G(298 K) = -1449.025424
SCF (Corr) = -2120.13353152
Low Freq. = 10.1146cm⁻¹, 19.8362cm⁻¹

90

C 3.46608 0.02984 -0.02948
C 4.78753 -0.43936 -0.06913
C 4.99610 -1.82300 -0.12861
C 3.90612 -2.70210 -0.14474
C 2.61421 -2.15639 -0.10464
N 2.38406 -0.80800 -0.05563
O 1.55180 -2.99259 -0.11743
P -0.06605 -2.26822 0.03009
C -0.84134 -3.14627 -1.50297
C -2.37849 -3.08398 -1.38406
Rh 0.43670 -0.05294 0.01969
B -4.40432 0.38844 0.51657
N -3.39742 1.25439 -0.36270
C -3.24125 2.69655 0.00781
O 3.24850 1.36304 0.04140
P 1.56000 1.91954 0.03218
C 1.66249 2.97139 -1.58220
C 2.67702 4.12928 -1.53784
C -0.58176 -3.07749 1.69936
C 0.49306 -2.61754 2.71292
C -1.94296 -2.46807 2.10399
C -0.65276 -4.61549 1.67909
C 1.65357 2.98117 1.63915
C 2.96132 3.78223 1.80282
C 0.42901 3.91961 1.67873
C 1.54577 1.94811 2.78675
C -0.37753 -2.29621 -2.71008
C -0.37417 -4.60289 -1.70441
C 2.06598 1.96326 -2.68465
C 0.24654 3.50358 -1.89311
C -3.46008 1.09220 -1.85122
H 6.01534 -2.21898 -0.15898
H -0.85027 -2.68366 -3.63198
H -0.64565 -1.23249 -2.58588
H 0.71554 -2.35124 -2.84529

H -2.83019 -3.40369 -2.34133
H -2.76374 -3.75570 -0.59911
H -2.73629 -2.06199 -1.16664
H -0.76093 -4.96674 -2.67433
H 0.72364 -4.67582 -1.73031
H -0.74844 -5.28267 -0.92516
H 0.18137 -2.92157 3.72898
H 1.47260 -3.07844 2.50751
H 0.61328 -1.51960 2.69927
H -0.81644 -4.98156 2.70959
H -1.48989 -4.98893 1.06677
H 0.28307 -5.06600 1.31115
H -2.20625 -2.82042 3.11843
H -1.89651 -1.36628 2.12392
H 3.84714 3.13701 1.69867
H 2.98131 4.22195 2.81703
H -2.76016 -2.76820 1.42771
H 3.04818 4.61052 1.08473
H 1.50316 2.48419 3.75312
H 0.64352 1.32020 2.68489
H 2.42293 1.28023 2.81228
H 0.37374 4.40148 2.67201
H 0.49385 4.72555 0.92839
H -0.51375 3.36518 1.52640
H 2.78101 4.55620 -2.55258
H 2.35075 4.94673 -0.87446
H 3.67423 3.78962 -1.21588
H 1.99836 2.45996 -3.67001
H 3.10164 1.61122 -2.55442
H 1.39742 1.08362 -2.68860
H 0.25710 4.01824 -2.87148
H -0.47626 2.67132 -1.95335
H -0.10773 4.23057 -1.14275
H -1.08136 0.53865 0.15463
H 5.60960 0.27775 -0.04970
H 4.02676 -3.78576 -0.18409
H -4.41314 -0.73883 0.07003
H -4.05332 0.47138 1.67366
H -2.43973 0.81872 -0.09748
H -2.51143 1.43532 -2.29315
H -3.60543 0.02986 -2.08907
H -4.28794 1.68604 -2.26659
H -2.30552 3.08472 -0.42266
H -4.08557 3.28194 -0.38772
H -3.20191 2.78284 1.10257
N -5.97892 0.84798 0.51833
C -6.32797 2.08763 1.29426
C -6.69736 0.81339 -0.80026
H -6.36030 0.06159 1.06699
H -7.41663 2.14079 1.45205
H -5.80762 2.05661 2.26105
H -6.00528 2.97276 0.72990
H -7.78616 0.86239 -0.64242
H -6.38696 1.67908 -1.40197
H -6.43518 -0.11600 -1.32418

TS(4-1)_B

SCF = -1449.70311239
H(0 K) = -1448.934991
H(298 K) = -1448.888048
G(298 K) = -1449.012504
SCF (Corr) = -2120.11769815
Low Freq. = -750.3122cm⁻¹, 17.4219cm⁻¹

90

C -3.20085 0.74065 -0.49315
C -4.34124 1.50734 -0.77595

C -4.18056 2.88359 -0.97187
 C -2.91280 3.46714 -0.87037
 C -1.82038 2.63466 -0.58376
 N -1.94325 1.27921 -0.42499
 O -0.60095 3.19260 -0.45934
 P 0.74553 2.16432 0.05938
 C 1.99149 2.75202 -1.29462
 C 3.43742 2.60170 -0.77723
 Rh -0.28738 0.10176 0.05997
 B 3.82325 -1.15236 -0.03524
 N 2.57178 -2.00293 -0.29699
 C 2.25617 -3.05620 0.68255
 O -3.35066 -0.58105 -0.27808
 P -1.90882 -1.54133 0.09502
 C -2.17140 -2.81688 -1.33653
 C -3.65175 -3.18479 -1.57854
 C 1.07809 2.97214 1.77337
 C -0.23641 2.79980 2.57016
 C 2.19570 2.15886 2.46547
 C 1.44259 4.46766 1.70008
 C -2.45914 -2.20805 1.81501
 C -3.73765 -3.06686 1.78698
 C -1.27759 -3.00909 2.40615
 C -2.69630 -0.94862 2.68105
 C 1.75566 1.79916 -2.49009
 C 1.74096 4.20697 -1.74766
 C -1.62928 -2.09783 -2.59564
 C -1.35728 -4.09537 -1.05052
 C 2.32393 -2.45916 -1.67667
 H -5.05147 3.50769 -1.19226
 H 2.43669 2.07888 -3.31492
 H 1.95015 0.74895 -2.21800
 H 0.72213 1.86828 -2.86995
 H 4.13102 2.77085 -1.62140
 H 3.68031 3.34775 -0.00342
 H 3.64169 1.59454 -0.38159
 H 2.46948 4.44670 -2.54380
 H 0.73068 4.34345 -2.16037
 H 1.88511 4.93718 -0.93774
 H -0.07097 3.13944 3.60872
 H -1.05727 3.40152 2.14713
 H -0.55375 1.74273 2.59754
 H 1.50253 4.86970 2.72805
 H 2.42159 4.64321 1.22628
 H 0.67850 5.05004 1.16033
 H 2.31734 2.53180 3.49878
 H 1.94044 1.08715 2.51970
 H -4.57385 -2.54895 1.29095
 H -4.04615 -3.27756 2.82730
 H 3.16925 2.25707 1.96043
 H -3.57930 -4.03963 1.29413
 H -2.89045 -1.26283 3.72262
 H -1.81206 -0.28732 2.67832
 H -3.56788 -0.37057 2.33427
 H -1.53851 -3.32308 3.43309
 H -1.05445 -3.92393 1.83225
 H -0.36339 -2.39507 2.46314
 H -3.70701 -3.79888 -2.49612
 H -4.08467 -3.77815 -0.76080
 H -4.27713 -2.29314 -1.73246
 H -1.65865 -2.79487 -3.45306
 H -2.24922 -1.22362 -2.85622
 H -0.59269 -1.74476 -2.46360
 H -1.39353 -4.75175 -1.93893
 H -0.29522 -3.88473 -0.84305
 H -1.76894 -4.66952 -0.20409
 H 0.89941 -0.69860 0.84514
 H -5.31374 1.01558 -0.82593

H -2.74628 4.53810 -0.99431
 H 4.02206 -0.41132 -0.98092
 H 3.74421 -0.58727 1.04463
 H 1.39942 -1.02577 0.04793
 H 1.25552 -2.69930 -1.81361
 H 2.59341 -1.65923 -2.38220
 H 2.90299 -3.36836 -1.93519
 H 1.19088 -3.34157 0.61616
 H 2.85266 -3.97637 0.52097
 H 2.44606 -2.68272 1.70166
 N 5.29352 -1.96059 0.08601
 C 5.55051 -2.69851 1.36458
 C 5.67580 -2.78530 -1.10328
 H 5.92746 -1.14782 0.09304
 H 6.61195 -2.98656 1.43772
 H 5.27788 -2.04787 2.20684
 H 4.93041 -3.60476 1.38973
 H 6.73504 -3.08470 -1.04684
 H 5.04949 -3.68837 -1.12641
 H 5.50023 -2.19638 -2.01428

1•NMe₂BH₂NMe₂H

SCF = -1449.70997640
 H(0 K)= -1448.942977
 H(298 K)= -1448.894564
 G(298 K)= -1449.026537
 SCF (Corr) = -2120.11626883
 Low Freq. = 11.7487cm⁻¹, 15.2017cm⁻¹

90
 C -2.87288 -1.81709 -0.35572
 C -4.20526 -2.18084 -0.60084
 C -5.15214 -1.16043 -0.74841
 C -4.77723 0.18538 -0.65320
 C -3.42877 0.47989 -0.40644
 N -2.48376 -0.50426 -0.25809
 O -3.04890 1.77161 -0.31583
 P -1.34465 2.11944 0.03265
 C -0.96317 3.21644 -1.49287
 C 0.40168 3.90116 -1.25757
 Rh -0.51271 -0.02067 0.11476
 B 3.90186 0.86545 0.15401
 N 4.45103 -0.33358 -0.52027
 C 5.15600 -1.38014 0.20567
 O -1.94721 -2.78691 -0.21526
 P -0.27018 -2.30655 0.11561
 C 0.57538 -3.15819 -1.37728
 C 0.03632 -4.57554 -1.66179
 C -1.54309 3.06459 1.68884
 C -2.29667 2.08971 2.62490
 C -0.12108 3.30726 2.24745
 C -2.32043 4.38948 1.57298
 C -0.00994 -3.17535 1.80370
 C -0.08365 -4.71276 1.73671
 C 1.36307 -2.71208 2.34566
 C -1.12949 -2.63149 2.72270
 C -0.84927 2.22171 -2.67363
 C -2.06287 4.25287 -1.80224
 C 0.26621 -2.24084 -2.58524
 C 2.09733 -3.17951 -1.11331
 C 4.70865 -0.37704 -1.95266
 H -6.19809 -1.41754 -0.93991
 H -0.56844 2.78170 -3.58403
 H -0.08170 1.45114 -2.48848
 H -1.80797 1.71577 -2.87696
 H 0.71117 4.40021 -2.19357
 H 0.34926 4.67777 -0.47667

H	1.19366	3.17815	-0.99198
H	-1.82592	4.73264	-2.76909
H	-3.05417	3.78263	-1.89656
H	-2.12371	5.04957	-1.04714
H	-2.32204	2.52300	3.64081
H	-3.33739	1.92948	2.30065
H	-1.78944	1.11047	2.68382
H	-2.50816	4.77935	2.58987
H	-1.75123	5.16087	1.03032
H	-3.29801	4.25733	1.08221
H	-0.21016	3.76240	3.25026
H	0.44249	2.36517	2.35434
H	-1.01708	-5.06577	1.26949
H	-0.05492	-5.11251	2.76660
H	0.46803	3.99843	1.62359
H	0.77206	-5.14783	1.19648
H	-0.95381	-3.00007	3.74921
H	-1.12870	-1.52751	2.75259
H	-2.12710	-2.97633	2.40665
H	1.49657	-3.12754	3.36076
H	2.20638	-3.06397	1.73111
H	1.42528	-1.61358	2.42080
H	0.48836	-4.93407	-2.60422
H	0.29950	-5.29840	-0.87643
H	-1.05725	-4.58111	-1.79114
H	0.77183	-2.64964	-3.47879
H	-0.81423	-2.19932	-2.80432
H	0.62894	-1.21208	-2.42155
H	2.60529	-3.51236	-2.03648
H	2.50367	-2.18418	-0.85234
H	2.36886	-3.89569	-0.32026
H	0.91550	0.31985	0.85793
H	-4.46584	-3.23784	-0.66956
H	-5.49110	1.00276	-0.76339
H	3.12951	1.50725	-0.56121
H	3.47149	0.63885	1.28394
H	1.08256	0.36443	-0.06646
H	4.45001	-1.37076	-2.37695
H	4.09887	0.38336	-2.46766
H	5.77581	-0.19828	-2.22381
H	4.90956	-2.38602	-0.19770
H	6.26698	-1.29584	0.15021
H	4.86965	-1.35814	1.27005
N	5.07638	2.10839	0.52050
C	6.09116	1.68780	1.52748
C	5.71899	2.69033	-0.69084
H	4.49701	2.84314	0.95183
H	6.74413	2.52863	1.81758
H	5.56972	1.29476	2.41207
H	6.70528	0.88691	1.09108
H	6.36920	3.54385	-0.43342
H	6.32205	1.90851	-1.17463
H	4.93278	3.01398	-1.38810

TS (3-4)_N

SCF = -1449.67207789
 H(0 K) = -1448.903009
 H(298 K) = -1448.854434
 G(298 K) = -1448.987815
 SCF (Corr) = -2120.09886137
 Low Freq. = -14.9497cm⁻¹, 7.9027cm⁻¹

90

C	4.68785	-1.21416	-0.75981
C	3.31322	-1.17332	-0.47971
N	2.62633	0.00087	-0.34191
C	3.31216	1.17565	-0.48001

C	4.68675	1.21766	-0.76012
C	5.36917	0.00204	-0.89984
O	2.63616	-2.33745	-0.34218
P	0.89816	-2.23583	0.05248
C	0.94966	-3.20882	1.71672
C	-0.46176	-3.12269	2.34032
Rh	0.57097	0.00000	0.09215
P	0.89629	2.23610	0.05253
C	0.94756	3.20904	1.71681
C	-0.46348	3.12143	2.34106
O	2.63405	2.33920	-0.34275
B	-4.20793	0.00207	-1.23943
N	-4.15396	-0.00035	0.17945
C	-3.83742	-1.22582	0.94591
C	-3.83772	1.22255	0.95014
C	0.27056	3.30608	-1.42649
C	-1.19066	3.71518	-1.14604
C	1.13500	4.54347	-1.74283
C	0.30931	2.34031	-2.63522
C	0.27388	-3.30628	-1.42684
C	1.13960	-4.54283	-1.74300
C	-1.18704	-3.71680	-1.14695
C	0.31213	-2.34036	-2.63546
C	1.40555	4.67469	1.60711
C	1.93352	2.41809	2.60841
C	1.93440	-2.41690	2.60880
C	1.40922	-4.67399	1.60713
H	-6.01563	-0.00069	0.15327
H	-1.01085	-0.00062	0.43746
H	-4.29739	1.06042	-1.80624
H	-4.29732	-1.05438	-1.80982
H	-4.39219	-1.24564	1.90242
H	-4.08684	-2.11537	0.34938
H	-2.75374	-1.23575	1.16533
H	-4.39253	1.23895	1.90668
H	-4.08734	2.11410	0.35668
H	-2.75406	1.23199	1.16962
H	1.54414	-5.08771	2.62392
H	0.66672	-5.30813	1.09537
H	2.37288	-4.76412	1.08064
H	1.89749	-2.82267	3.63662
H	2.97114	-2.50231	2.24605
H	1.66455	-1.34617	2.64508
H	-0.43983	-3.57334	3.34993
H	-0.78187	-2.07117	2.43790
H	-1.21763	-3.66971	1.75145
H	0.79870	-4.97983	-2.70004
H	2.20120	-4.27370	-1.85526
H	1.05966	-5.32801	-0.97701
H	-1.61555	-4.17857	-2.05584
H	-1.26410	-4.45878	-0.33415
H	-1.80909	-2.84151	-0.88961
H	-0.12743	-2.84343	-3.51727
H	-0.25146	-1.41349	-2.43034
H	1.34642	-2.05624	-2.89152
H	1.89660	2.82373	3.63629
H	1.66484	1.34707	2.64472
H	2.97001	2.50466	2.24525
H	1.54049	5.08849	2.62386
H	2.36888	4.76586	1.08019
H	0.66216	5.30809	1.09572
H	-0.44160	3.57220	3.35061
H	-1.22021	3.66756	1.75246
H	-0.78239	2.06957	2.43887
H	-0.13101	2.84307	-3.51683
H	1.34379	2.05719	-2.89163
H	-0.25335	1.41290	-2.43000
H	-1.61996	4.17660	-2.05473

H -1.81178 2.83926 -0.88853
H -1.26813 4.45703 -0.33315
H 0.79342 4.98020 -2.69975
H 1.05455 5.32853 -0.97677
H 2.19683 4.27535 -1.85541
H 5.18586 -2.17990 -0.85966
H 6.44128 0.00249 -1.11772
H 5.18389 2.18382 -0.86022
N -7.09639 -0.00123 0.17610
C -7.58377 1.25834 -0.48746
C -7.58252 -1.26334 -0.48353
H -7.38248 0.00019 1.16700
H -8.68252 1.25786 -0.50837
H -7.21408 2.12443 0.07837
H -7.18338 1.28477 -1.51058
H -8.68126 -1.26403 -0.50445
H -7.18211 -1.29252 -1.50657
H -7.21197 -2.12730 0.08499

[4•H₂BNMe₂•H₂NMe]⁺

SCF = -1449.67389115
H(0 K) = -1448.904704
H(298 K) = -1448.855216
G(298 K) = -1448.993881
SCF (Corr) = -2120.09948909
Low Freq. = 4.7973cm⁻¹, 5.4032cm⁻¹

90

C 4.78276 -0.73806 -0.95149
C 3.42871 -0.85629 -0.60205
N 2.61741 0.23137 -0.43375
C 3.15417 1.47822 -0.59857
C 4.49889 1.67799 -0.94751
C 5.30931 0.54886 -1.12492
O 2.90001 -2.09083 -0.42598
P 1.19027 -2.18655 0.08063
C 1.44633 -3.10295 1.75674
C 0.06798 -3.16519 2.45442
Rh 0.60597 -0.00554 0.11440
P 0.66636 2.25238 0.07996
C 0.69418 3.19984 1.75778
C -0.66329 2.93560 2.44903
O 2.35399 2.55586 -0.41962
B -4.90912 1.35937 0.04736
N -4.27154 0.09859 0.12132
C -3.58846 -0.52355 -1.03575
C -3.85856 -0.51598 1.40337
C -0.16732 3.26378 -1.33540
C -1.64044 3.51586 -0.94993
C 0.53982 4.58929 -1.68478
C -0.10713 2.32371 -2.56318
C 0.60884 -3.36421 -1.33334
C 1.59716 -4.49513 -1.68353
C -0.76864 -3.94208 -0.94472
C 0.45221 -2.43555 -2.56128
C 0.97220 4.71066 1.65691
C 1.81254 2.51688 2.57971
C 2.37678 -2.17696 2.57500
C 2.07069 -4.50626 1.65277
H -6.05272 -0.56894 -0.07397
H -0.93116 -0.18164 0.57700
H -5.32500 1.85305 1.06419
H -5.10591 1.83881 -1.03984
H -3.83681 -1.60003 -1.10299
H -3.88503 -0.01276 -1.96324
H -2.49182 -0.43603 -0.89735
H -4.13226 -1.58810 1.42943

H -4.33396 0.01241 2.24218
H -2.75803 -0.44692 1.49588
H 2.30595 -4.87303 2.66927
H 1.38327 -5.23762 1.19670
H 3.00997 -4.49760 1.07669
H 2.44527 -2.55785 3.61062
H 3.39500 -2.14789 2.15495
H 1.98259 -1.14549 2.60674
H 0.19923 -3.56341 3.47759
H -0.38197 -2.16055 2.52729
H -0.64012 -3.82923 1.93057
H 1.24717 -5.00359 -2.60132
H 2.60592 -4.10089 -1.88101
H 1.67124 -5.25700 -0.89393
H -1.20706 -4.45940 -1.81852
H -0.69506 -4.68078 -0.12904
H -1.46947 -3.14696 -0.63340
H 0.01588 -3.00951 -3.40058
H -0.19656 -1.57110 -2.33514
H 1.42683 -2.04170 -2.89437
H 1.78641 2.90327 3.61522
H 1.66975 1.42192 2.61128
H 2.81099 2.72621 2.16328
H 1.10748 5.12122 2.67487
H 1.89136 4.92356 1.08762
H 0.13530 5.26030 1.19561
H -0.63352 3.35286 3.47261
H -1.50578 3.41416 1.92224
H -0.86477 1.85335 2.52003
H -0.65686 2.78666 -3.40437
H 0.93226 2.15717 -2.89182
H -0.54906 1.33696 -2.33988
H -2.18277 3.91970 -1.82486
H -2.14643 2.58348 -0.64053
H -1.73798 4.25245 -0.13500
H 0.08106 5.00706 -2.60032
H 0.44216 5.34662 -0.89354
H 1.61097 4.43331 -1.88557
H 5.38541 -1.63928 -1.07502
H 6.36189 0.67300 -1.39619
H 4.87614 2.69477 -1.06782
N -7.02585 -1.01379 -0.17973
C -7.86748 -0.59783 0.99718
C -7.59340 -0.60114 -1.51168
H -6.89582 -2.03690 -0.16423
H -8.87631 -1.01986 0.88923
H -7.39633 -0.96591 1.91880
H -7.91310 0.49991 1.01581
H -8.60175 -1.02340 -1.62307
H -7.63377 0.49653 -1.54241
H -6.93419 -0.97123 -2.30874

[4•H₂NMe₂]⁺

SCF = -1289.05350952
H(0 K) = -1288.388813
H(298 K) = -1288.347180
G(298 K) = -1288.460987
SCF (Corr) = -1959.39382531
Low Freq. = 19.2942cm⁻¹, 24.7875cm⁻¹

78

C -0.01150 -4.16540 -1.85943
C -1.22564 -3.52218 -1.58673
C -1.17883 -2.24526 -1.00785
N -0.00198 -1.60772 -0.72927
C 1.16991 -2.27150 -0.96743
C 1.20649 -3.54981 -1.54508

O -2.34113 -1.61723 -0.71392
P -2.25504 -0.06649 0.14932
C -3.46067 0.87087 -1.03478
C -2.61573 1.18573 -2.29204
Rh 0.00459 0.27716 0.21443
P 2.25937 -0.08706 0.16765
C 3.44139 0.80893 -1.06369
C 2.59776 0.97924 -2.34997
O 2.33514 -1.67190 -0.63311
C -3.09159 -0.57312 1.80766
C -4.55414 -1.03981 1.68800
C -2.97814 0.64081 2.75942
C -2.22224 -1.72790 2.35826
C 3.09240 -0.54048 1.84089
C 2.19291 -1.64404 2.44573
C 3.02346 0.71563 2.74033
C 4.54000 -1.05448 1.73022
C 3.80569 2.18707 -0.47252
C 4.71947 0.01971 -1.41795
C -4.69135 0.04883 -1.47616
C -3.91697 2.17635 -0.34888
N -0.28867 3.54668 -0.36130
C 0.05999 4.37248 0.83421
C 0.35097 4.00497 -1.62991
H -1.31376 3.54378 -0.48209
H 0.04189 1.56411 1.17172
H -4.87966 -1.44173 2.66482
H -5.23954 -0.21431 1.43655
H -4.67440 -1.84200 0.94244
H -2.56616 -1.97910 3.37789
H -2.30557 -2.63625 1.73993
H -1.15878 -1.43714 2.41578
H -3.34080 0.34483 3.76041
H -1.93166 0.97494 2.85899
H -3.59209 1.49622 2.43120
H -5.22456 0.60899 -2.26616
H -4.39677 -0.92512 -1.89501
H -5.40471 -0.12432 -0.65865
H -4.42125 2.82795 -1.08522
H -4.63296 1.98838 0.46760
H -3.07568 2.74760 0.08907
H -3.20055 1.82260 -2.98083
H -1.66965 1.69722 -2.04248
H -2.34600 0.26386 -2.83288
H 2.53686 -1.86226 3.47293
H 1.13931 -1.31755 2.49699
H 2.24369 -2.57975 1.86578
H 4.85464 -1.44305 2.71594
H 4.63565 -1.87639 1.00290
H 5.24796 -0.25524 1.45890
H 3.38529 0.45038 3.75018
H 3.66072 1.53642 2.37124
H 1.98921 1.08713 2.83399
H 3.14633 1.61829 -3.06615
H 2.41507 0.00839 -2.83913
H 1.61406 1.43342 -2.13964
H 4.31654 2.79451 -1.24182
H 2.91288 2.74482 -0.13623
H 4.49257 2.10251 0.38539
H 5.22185 0.52612 -2.26251
H 5.43896 -0.02334 -0.58827
H 4.48701 -1.00853 -1.73492
H -2.19269 -3.98141 -1.79696
H -0.01508 -5.16303 -2.30820
H 2.16956 -4.03063 -1.72277
H -0.06241 2.45387 -0.10518
H 1.44194 3.95280 -1.51259
H 0.03946 3.33921 -2.44691

H 0.04899 5.04008 -1.85030
H 1.15216 4.36148 0.95844
H -0.29192 5.40569 0.69857
H -0.40671 3.91724 1.71946

TS (4-1)_N

SCF = -1289.05170281
H(0 K) = -1288.391089
H(298 K) = -1288.349911
G(298 K) = -1288.461734
SCF (Corr) = -1959.38765333
Low Freq. = -337.9922cm⁻¹, 20.5483cm⁻¹

78
C -0.04674 -4.02755 -2.07926
C -1.25805 -3.38863 -1.78335
C -1.20270 -2.14618 -1.13399
N -0.01908 -1.54098 -0.81817
C 1.14924 -2.20327 -1.07212
C 1.17668 -3.44860 -1.71914
O -2.35845 -1.52385 -0.80849
P -2.27836 -0.03806 0.16567
C -3.47347 0.98314 -0.94872
C -2.64474 1.33108 -2.20883
Rh -0.00038 0.28975 0.26366
P 2.26685 -0.09050 0.18955
C 3.44959 0.84323 -1.00742
C 2.61911 1.02888 -2.30034
O 2.31472 -1.64017 -0.68495
C -3.09611 -0.66234 1.79106
C -4.55965 -1.12111 1.65103
C -2.97750 0.48420 2.82266
C -2.22239 -1.85289 2.25186
C 3.08162 -0.63966 1.84049
C 2.12393 -1.70869 2.41804
C 3.09165 0.59026 2.77771
C 4.49576 -1.23388 1.69855
C 3.79179 2.21245 -0.38347
C 4.73931 0.07169 -1.35740
C -4.73229 0.21096 -1.40090
C -3.87966 2.26408 -0.18767
N -0.19129 3.41599 -0.38537
C 0.20055 4.15616 0.83435
C 0.38822 3.97033 -1.63017
H -1.21665 3.42643 -0.46353
H 0.02305 1.39120 1.39515
H -4.87223 -1.59651 2.59851
H -5.24730 -0.27912 1.47244
H -4.68925 -1.86437 0.84825
H -2.56084 -2.17600 3.25273
H -2.30934 -2.71576 1.57190
H -1.15841 -1.56867 2.32889
H -3.33878 0.11956 3.80110
H -1.93147 0.81147 2.94475
H -3.59093 1.36048 2.55521
H -5.25804 0.81717 -2.16102
H -4.47324 -0.75390 -1.86256
H -5.44019 0.02895 -0.58078
H -4.38575 2.95935 -0.88123
H -4.58386 2.05106 0.63298
H -3.01687 2.79653 0.25331
H -3.22795 2.01616 -2.85052
H -1.68122 1.80727 -1.96413
H -2.42068 0.42791 -2.79973
H 2.47280 -1.99138 3.42761
H 1.09503 -1.31819 2.50925
H 2.10362 -2.62150 1.80065

H 4.78933 -1.68014 2.66598
H 4.53975 -2.02954 0.93793
H 5.24848 -0.46784 1.45591
H 3.43374 0.27021 3.77835
H 3.78129 1.37872 2.43457
H 2.08419 1.02587 2.88678
H 3.17478 1.68326 -2.99635
H 2.45112 0.06601 -2.80994
H 1.63396 1.48077 -2.09900
H 4.31076 2.83549 -1.13428
H 2.89012 2.75842 -0.05645
H 4.46648 2.11718 0.48278
H 5.24398 0.59738 -2.18845
H 5.45022 0.02743 -0.52030
H 4.52469 -0.95460 -1.69295
H -2.22680 -3.82736 -2.02661
H -0.05729 -4.99890 -2.58253
H 2.13429 -3.93417 -1.91232
H 0.00688 2.00775 -0.10951
H 1.48517 3.91374 -1.57274
H 0.04711 3.37535 -2.49078
H 0.09524 5.02524 -1.77994
H 1.29808 4.14813 0.92049
H -0.14841 5.20318 0.80767
H -0.22129 3.64516 1.71374

1•NMe₂H

SCF = -1289.05442023
H(0 K) = -1288.392567
H(298 K) = -1288.350285
G(298 K) = -1288.467848
SCF (Corr) = -1959.38626695
Low Freq. = 14.4738cm⁻¹, 23.1170cm⁻¹

78
C -0.21308 -4.40174 -1.43597
C -1.40057 -3.69656 -1.20607
C -1.30611 -2.37604 -0.74398
N -0.09866 -1.76495 -0.52004
C 1.05154 -2.47849 -0.74328
C 1.03094 -3.80239 -1.20531
O -2.44153 -1.68332 -0.51564
P -2.30405 -0.03663 0.12347
C -3.31627 0.86252 -1.23728
C -2.34775 0.97394 -2.43960
Rh -0.01450 0.18055 0.18794
P 2.24799 -0.23245 0.11969
C 3.32715 0.57378 -1.24637
C 2.37153 0.74317 -2.45238
O 2.24238 -1.88725 -0.51394
C -3.22649 -0.25768 1.79078
C -4.71710 -0.61929 1.64588
C -3.05406 1.05859 2.58545
C -2.47675 -1.39448 2.52517
C 3.14869 -0.52886 1.78703
C 2.30501 -1.59678 2.52291
C 3.09047 0.79836 2.57949
C 4.60265 -1.01658 1.64068
C 3.78166 1.96057 -0.74154
C 4.53640 -0.28547 -1.67025
C -4.58473 0.09960 -1.67256
C -3.67128 2.27341 -0.72006
N 0.03069 4.03065 -0.16496
C 0.75672 4.68449 0.93622
C 0.46230 4.51920 -1.48513
H -0.96789 4.24283 -0.05717
H 0.05273 1.50381 1.13921

H -5.12187 -0.85643 2.64642
H -5.31381 0.21593 1.24567
H -4.87042 -1.50441 1.00787
H -2.87920 -1.47934 3.55046
H -2.61474 -2.36771 2.02745
H -1.39510 -1.18446 2.59931
H -3.49898 0.92592 3.58787
H -1.98970 1.31415 2.72270
H -3.56320 1.91355 2.11226
H -5.02667 0.62573 -2.53803
H -4.35429 -0.92958 -1.98808
H -5.35119 0.06039 -0.88549
H -4.09237 2.86459 -1.55287
H -4.42888 2.24899 0.07997
H -2.78253 2.81226 -0.34758
H -2.84622 1.53726 -3.24934
H -1.41543 1.49810 -2.16821
H -2.07988 -0.01764 -2.84138
H 2.69721 -1.71230 3.54917
H 1.24459 -1.29666 2.59445
H 2.36170 -2.57939 2.02776
H 4.98632 -1.28874 2.64061
H 4.67932 -1.91048 1.00116
H 5.26765 -0.23449 1.24100
H 3.52393 0.62969 3.58155
H 3.66971 1.60598 2.10385
H 2.05225 1.14456 2.71718
H 2.91207 1.26035 -3.26586
H 2.03294 -0.23017 -2.84546
H 1.48083 1.33871 -2.18927
H 4.25248 2.50758 -1.57809
H 2.93351 2.56990 -0.38300
H 4.53134 1.88905 0.06338
H 5.01199 0.19330 -2.54531
H 5.30093 -0.36564 -0.88443
H 4.23235 -1.30077 -1.96832
H -2.38542 -4.13586 -1.37044
H -0.25788 -5.43379 -1.79592
H 1.97402 -4.32559 -1.36902
H 0.05262 1.86679 0.24840
H 1.51156 4.22515 -1.65774
H -0.15347 4.05589 -2.27275
H 0.40055 5.62326 -1.59297
H 1.82493 4.41158 0.88175
H 0.69356 5.79338 0.91648
H 0.36524 4.33136 1.90468

[Rh(PONOP)(H₃BNMe₂)], I

SCF = -1314.09985104
H(0 K) = -1313.435066
H(298 K) = -1313.393344
G(298 K) = -1313.505389
SCF (Corr) = -1984.41564781
Low Freq. = 23.8370cm⁻¹, 28.3151cm⁻¹

79
N 0.33036 -1.78820 -0.38820
C 1.58563 -2.34020 -0.44444
C 1.80673 -3.70718 -0.66863
C 0.69596 -4.54561 -0.82477
C -0.59702 -4.01488 -0.73834
C -0.74089 -2.63785 -0.51128
O 2.65621 -1.53325 -0.27108
P 2.34142 0.18379 0.05568
Rh 0.05872 0.23020 -0.02477
P -2.12691 -0.41136 0.05345
O -1.98524 -2.12594 -0.40348

C	3.19162	0.33714	1.77869
C	2.48159	-0.70425	2.67414
C	2.88246	1.75505	2.31123
C	4.70843	0.07115	1.78376
C	3.43661	0.88210	-1.37413
C	2.57679	0.71322	-2.64980
C	3.68876	2.38301	-1.11418
C	4.76684	0.12452	-1.57119
C	-2.94075	-0.62862	1.78937
C	-4.34636	-1.25782	1.77039
C	-2.97180	0.76645	2.45266
C	-1.98016	-1.54211	2.58497
C	-3.41362	0.07590	-1.29723
C	-2.57043	0.32950	-2.56946
C	-4.44951	-1.02763	-1.59899
C	-4.10047	1.38762	-0.85991
B	-0.13227	2.62695	-0.26250
N	-1.45116	3.38093	-0.16666
C	-1.58390	4.16866	1.05728
C	-1.69798	4.23012	-1.33322
H	-0.13245	1.71831	0.77182
H	0.86171	3.28211	0.06529
H	0.02032	2.08320	-1.36660
H	-0.96510	5.06826	-1.43539
H	-1.64254	3.62945	-2.25718
H	-2.70740	4.68709	-1.27948
H	-2.59024	4.62925	1.12618
H	-0.83345	4.99403	1.13376
H	-1.44735	3.52095	1.94103
H	-4.66944	-1.44297	2.81222
H	-5.09640	-0.59429	1.31071
H	-4.35721	-2.22521	1.24184
H	-2.31154	-1.58006	3.63932
H	-1.97533	-2.57233	2.19262
H	-0.94814	-1.15165	2.55530
H	-3.34010	0.66211	3.49044
H	-1.96325	1.21064	2.48820
H	-3.63581	1.47121	1.92813
H	-5.06445	-0.69798	-2.45730
H	-3.96763	-1.97905	-1.87352
H	-5.13392	-1.21453	-0.75872
H	-4.67550	1.79008	-1.71489
H	-4.81639	1.22244	-0.03622
H	-3.35282	2.14704	-0.55159
H	-3.24591	0.64413	-3.38706
H	-1.81923	1.11882	-2.40990
H	-2.04544	-0.58373	-2.89935
H	2.82349	-0.57258	3.71753
H	1.38647	-0.56995	2.64302
H	2.71534	-1.73656	2.36560
H	5.06429	0.04984	2.83104
H	4.96011	-0.89977	1.32644
H	5.27239	0.86407	1.26639
H	3.23678	1.82832	3.35638
H	3.38777	2.54390	1.73157
H	1.80053	1.96528	2.29700
H	3.13960	1.11545	-3.51301
H	2.35983	-0.34884	-2.85688
H	1.62010	1.25302	-2.57188
H	4.14821	2.83031	-2.01534
H	2.75210	2.92799	-0.90458
H	4.38820	2.54553	-0.27649
H	5.24884	0.50265	-2.49220
H	5.47506	0.27877	-0.74429
H	4.60569	-0.95787	-1.69497
H	-1.49315	-4.63026	-0.83363
H	0.83818	-5.61569	-1.00234
H	2.83280	-4.07642	-0.70972

TS B-H activation

SCF = -1314.09912036
H(0 K)= -1313.434862
H(298 K)= -1313.393512
G(298 K)= -1313.505098
SCF (Corr) = -1984.41351229
Low Freq. = -68.4636cm⁻¹, 24.0436cm⁻¹

79			
N	0.36750	-1.79385	-0.45655
C	1.63395	-2.31035	-0.53862
C	1.88314	-3.66323	-0.81963
C	0.78794	-4.51649	-1.00229
C	-0.51677	-4.02038	-0.88670
C	-0.68770	-2.65642	-0.60271
O	2.68541	-1.48583	-0.33958
P	2.33344	0.21371	0.07159
Rh	0.04935	0.21116	0.01476
P	-2.10562	-0.47983	0.07341
O	-1.94180	-2.17360	-0.46456
C	3.19258	0.29192	1.79484
C	2.49836	-0.80032	2.64075
C	2.86001	1.67811	2.39381
C	4.71282	0.04934	1.78687
C	3.40730	0.99260	-1.32920
C	2.54797	0.83539	-2.60725
C	3.60186	2.49148	-1.01295
C	4.76427	0.29468	-1.55653
C	-2.92149	-0.78743	1.79454
C	-4.32494	-1.41920	1.74931
C	-2.95446	0.57617	2.52237
C	-1.95461	-1.73243	2.54442
C	-3.38432	0.06418	-1.25552
C	-2.53045	0.35034	-2.51432
C	-4.44520	-1.00021	-1.60088
C	-4.03633	1.37394	-0.76203
B	-0.10966	2.87305	-0.18789
N	-1.42732	3.56955	-0.17308
C	-1.77948	4.33683	1.01426
C	-1.89963	4.20814	-1.39426
H	-0.22674	1.71503	0.66858
H	0.76412	3.36958	0.51735
H	0.26091	2.55849	-1.30803
H	-1.45441	5.21913	-1.55614
H	-1.64111	3.58942	-2.26849
H	-3.00188	4.34430	-1.38087
H	-2.87530	4.50209	1.07516
H	-1.29576	5.34227	1.04498
H	-1.46876	3.79239	1.92127
H	-4.64548	-1.65806	2.78102
H	-5.07820	-0.73519	1.32583
H	-4.33535	-2.35818	1.17177
H	-2.28458	-1.82451	3.59589
H	-1.94270	-2.74173	2.10130
H	-0.92513	-1.33395	2.53466
H	-3.30321	0.42156	3.56067
H	-1.95020	1.03062	2.55789
H	-3.63814	1.29510	2.04338
H	-5.04195	-0.63499	-2.45781
H	-3.98250	-1.95586	-1.89404
H	-5.14360	-1.19211	-0.77319
H	-4.60784	1.82645	-1.59374
H	-4.74756	1.19500	0.06246
H	-3.27235	2.10617	-0.43399
H	-3.18740	0.74631	-3.31156
H	-1.73816	1.08871	-2.30884

H -2.05214 -0.56788 -2.89633
H 2.84003 -0.71463 3.68908
H 1.40123 -0.67777 2.61701
H 2.74434 -1.81363 2.28268
H 5.07079 -0.02098 2.83142
H 4.97888 -0.89206 1.27880
H 5.26382 0.87669 1.31105
H 3.20951 1.70816 3.44287
H 3.35505 2.50136 1.85413
H 1.77462 1.87133 2.38306
H 3.07855 1.30970 -3.45427
H 2.39141 -0.22685 -2.86171
H 1.56256 1.31537 -2.49690
H 4.04021 2.99097 -1.89711
H 2.64681 2.99272 -0.78077
H 4.29833 2.64747 -0.17148
H 5.22407 0.71478 -2.47085
H 5.47252 0.45588 -0.73079
H 4.64480 -0.78983 -1.70712
H -1.39860 -4.65292 -1.00133
H 0.95180 -5.57552 -1.22332
H 2.91578 -4.01051 -0.88250

[Rh(PONOP)(NMe₂BH₃)]₂, **II**

SCF = -1314.08726071
H(0 K) = -1313.419802
H(298 K) = -1313.378992
G(298 K) = -1313.487037
SCF (Corr) = -1984.40664093
Low Freq. = 26.1688cm⁻¹, 27.1802cm⁻¹

79

C 1.11834 2.35665 -0.27378
N -0.06403 1.65922 -0.15176
C -1.22597 2.38592 -0.13660
C -1.26695 3.78315 -0.24626
C -0.05378 4.47146 -0.37610
C 1.14916 3.76210 -0.38952
Rh -0.07068 -0.39629 -0.06164
N 0.18341 -2.53023 -0.09816
B 1.53166 -2.89853 0.66513
O -2.39552 1.72240 -0.00830
P -2.32284 -0.05261 0.03061
C -3.46868 -0.30880 -1.51263
C -4.84152 0.38215 -1.40328
O 2.26914 1.69176 -0.28832
P 2.26059 -0.13618 0.03820
C 3.52322 -0.39738 -1.45005
C 4.01413 -1.85347 -1.58392
C -3.31784 -0.25545 1.69214
C -4.34732 0.86767 1.94026
C 3.18649 0.03419 1.77595
C 2.06700 -0.01283 2.84061
C -2.24017 -0.19158 2.80025
C -4.02549 -1.62666 1.73411
C -2.67240 0.30733 -2.68782
C -3.65528 -1.81864 -1.77390
C 3.92889 1.38400 1.91335
C 4.19210 -1.11072 2.02276
C 2.73873 0.00439 -2.72180
C 4.75555 0.52434 -1.31277
C -0.88178 -3.34641 0.53861
C 0.27152 -2.95422 -1.51999
H 4.38064 1.41508 2.92275
H 4.74237 1.50626 1.18301
H 3.25260 2.24562 1.81873
H 2.52206 0.10100 3.84352

H 1.34086 0.80556 2.70013
H 1.52080 -0.96738 2.80946
H 4.65138 -0.96436 3.01897
H 3.71069 -2.09898 2.01327
H 5.01267 -1.11044 1.28580
H 5.35042 0.45197 -2.24302
H 4.47145 1.57761 -1.17271
H 5.41379 0.21647 -0.48394
H 4.70400 -1.90849 -2.44785
H 4.56371 -2.19400 -0.69239
H 3.19735 -2.56925 -1.75656
H 3.36825 -0.18939 -3.61052
H 1.80333 -0.56945 -2.83151
H 2.47876 1.07441 -2.71400
H -2.72174 -0.34288 3.78512
H -1.45973 -0.95828 2.66550
H -1.73707 0.78975 2.81636
H -4.78123 0.72730 2.94833
H -3.88051 1.86326 1.90588
H -5.17767 0.85246 1.21891
H -4.44368 -1.78286 2.74608
H -4.86654 -1.68257 1.02300
H -3.33934 -2.46433 1.53130
H -3.19161 0.07976 -3.63764
H -2.59691 1.40298 -2.59616
H -1.64817 -0.10296 -2.73930
H -4.23548 -1.95371 -2.70599
H -2.68953 -2.33150 -1.91105
H -4.20613 -2.32805 -0.96697
H -5.35190 0.32787 -2.38368
H -5.49960 -0.11072 -0.66866
H -4.74406 1.44588 -1.13387
H 2.11962 4.25218 -0.48473
H -0.04942 5.56229 -0.46446
H -2.23439 4.28747 -0.22903
H -0.59200 -4.41765 0.53489
H -1.01161 -3.02821 1.58285
H -1.83648 -3.24146 -0.00479
H 0.47554 -4.04393 -1.57813
H -0.66397 -2.73061 -2.06192
H 1.09291 -2.42224 -2.01920
H 1.94773 -4.00253 0.31954
H 2.40591 -2.04893 0.31594
H 1.37555 -2.80172 1.86956

Alternative Dehydrogenation Pathways from 3.

TS(3-1)_{concerted1}

SCF = -1314.48903314
H(0 K) = -1313.816000
H(298 K) = -1313.774315
G(298 K) = -1313.886260
SCF (Corr) = -1984.84198582
Low Freq. = -295.0495cm⁻¹, 14.8966cm⁻¹

80

C 1.14164 -3.57741 -1.52883
C -0.08338 -4.18375 -1.83017
C -1.28771 -3.52834 -1.54918
C -1.22673 -2.24560 -0.98493
N -0.04067 -1.60499 -0.74117
C 1.12136 -2.29285 -0.96617
O -2.37970 -1.62804 -0.66405
P -2.33999 -0.05733 0.14774
C -3.13761 -0.54197 1.82645

C -3.10951 0.70884 2.73587
 Rh -0.00340 0.25960 0.24977
 P 2.31102 -0.12618 0.13803
 C 3.11307 -0.59266 1.81610
 C 4.49615 -1.25844 1.68329
 O 2.29159 -1.71960 -0.62704
 C -3.54802 0.80179 -1.09247
 C -2.68327 1.10295 -2.33963
 C -4.71086 -0.12492 -1.51751
 C -4.12125 2.09504 -0.47475
 C 3.56016 0.66272 -1.11834
 C 2.69119 1.21290 -2.27304
 C 4.37281 1.79364 -0.45259
 C 4.53865 -0.39129 -1.68819
 C 3.19055 0.70011 2.66215
 C 2.12315 -1.57749 2.48149
 C -4.56923 -1.09848 1.70754
 C -2.20508 -1.62568 2.41688
 H -0.09996 -5.18574 -2.26864
 H -3.29495 1.65963 -3.07201
 H -1.79331 1.70648 -2.10505
 H -2.34646 0.17344 -2.82861
 H -4.70219 2.62600 -1.25017
 H -4.81285 1.87955 0.35632
 H -3.34320 2.78002 -0.10543
 H -5.27003 0.39253 -2.31804
 H -4.35627 -1.08390 -1.92215
 H -5.41960 -0.32538 -0.70210
 H -2.54733 -1.87205 3.43789
 H -2.21765 -2.55513 1.82481
 H -1.16230 -1.26773 2.49644
 H -4.88106 -1.47640 2.69811
 H -5.29463 -0.32278 1.41591
 H -4.63504 -1.93654 0.99558
 H -3.48703 0.42202 3.73387
 H -2.09021 1.10830 2.86099
 H 1.11944 -1.12915 2.59460
 H 2.49147 -1.82496 3.49324
 H -3.75278 1.52061 2.36124
 H 2.03106 -2.52043 1.91819
 H 3.52435 0.43435 3.68116
 H 3.91319 1.42755 2.26102
 H 2.20796 1.19403 2.75219
 H 4.82873 -1.58521 2.68514
 H 4.46405 -2.14958 1.03612
 H 5.26199 -0.56693 1.29832
 H 5.20670 0.12708 -2.39958
 H 5.17291 -0.85166 -0.91670
 H 4.01902 -1.19103 -2.23448
 H 3.35332 1.66442 -3.03361
 H 2.11838 0.41034 -2.76826
 H 1.97906 1.98133 -1.93443
 H 4.95458 2.31085 -1.23647
 H 3.74576 2.55228 0.03737
 H 5.09492 1.40689 0.28407
 H 0.09611 1.47865 1.33916
 H 2.09983 -4.07000 -1.69978
 H -2.26185 -3.98231 -1.73628
 B -0.45162 2.80807 0.96639
 N 0.12735 3.35475 -0.32354
 H -1.65311 2.76902 1.01550
 H 0.09033 3.15160 2.00396
 C -0.75054 4.13619 -1.20549
 C 1.43233 4.00916 -0.18260
 H 0.12466 1.56384 -0.66182
 H -0.29964 4.24396 -2.20838
 H -1.72814 3.64759 -1.31003
 H -0.92200 5.15576 -0.80120

H 1.93841 4.12642 -1.15782
 H 1.32045 5.01827 0.26654
 H 2.07124 3.42058 0.49177

TS (3-1) concerted2

SCF = -1314.48200677
 H(0 K) = -1313.810038
 H(298 K) = -1313.767307
 G(298 K) = -1313.882581
 SCF (Corr) = -1984.83260740
 Low Freq. = -1180.4201cm⁻¹, 20.6198cm⁻¹

80
 C -0.00008 -4.56891 -0.61626
 C 1.21352 -3.87965 -0.51484
 C 1.17155 -2.48781 -0.34441
 N -0.00003 -1.77759 -0.33346
 C -1.17164 -2.48774 -0.34463
 C -1.21366 -3.87958 -0.51507
 O 2.33253 -1.82906 -0.16548
 P 2.30428 -0.07558 0.07779
 C 3.16830 0.00210 1.79563
 Rh -0.00000 0.29077 0.10798
 P -2.30431 -0.07550 0.07774
 C -3.48407 0.27384 -1.42529
 O -2.33261 -1.82893 -0.16593
 C 3.48391 0.27343 -1.42545
 B 0.00004 2.61626 -1.59198
 N 0.00019 3.52034 -0.39166
 C -3.16820 0.00186 1.79566
 H -2.18048 -4.38424 -0.53924
 H -0.00010 -5.65507 -0.74569
 H 2.18032 -4.38436 -0.53883
 C -4.57793 -0.61789 1.84804
 C -2.22887 -0.77312 2.75009
 C -3.21451 1.48751 2.21986
 C -4.73216 -0.63793 -1.43398
 C -3.92688 1.75021 -1.43701
 C -2.63473 -0.05114 -2.67880
 C 4.57792 -0.61791 1.84806
 C 3.21488 1.48783 2.21947
 C 2.22890 -0.77249 2.75032
 C 4.73193 -0.63842 -1.43413
 C 2.63438 -0.05169 -2.67880
 C 3.92681 1.74977 -1.43751
 H -1.05107 2.40506 -2.11705
 H 1.05105 2.40492 -2.11722
 H -0.00001 1.58771 1.07414
 C -1.23188 4.26584 -0.04272
 H 0.00015 2.37648 0.24890
 C 1.23238 4.26575 -0.04293
 H 3.21335 0.22397 -3.57866
 H 2.41394 -1.12954 -2.74499
 H 1.68239 0.50014 -2.70284
 H 5.21550 -0.53544 -2.42265
 H 5.47588 -0.35171 -0.67773
 H 4.47626 -1.69969 -1.29804
 H 4.56851 1.91921 -2.32099
 H 3.07558 2.44225 -1.52120
 H 4.52367 2.01697 -0.54952
 H 4.89265 -0.68466 2.90526
 H 4.60176 -1.63612 1.42912
 H 5.32614 -0.00090 1.32712
 H 3.61419 1.55164 3.24765
 H 3.87672 2.09137 1.57596
 H 2.21046 1.94378 2.22279

H 2.60474 -0.66556 3.78396
H 1.19882 -0.37580 2.71723
H 2.19904 -1.84815 2.51226
H -3.61368 1.55113 3.24811
H -2.21003 1.94331 2.22315
H -3.87636 2.09129 1.57658
H -4.89257 -0.68491 2.90526
H -5.32609 -0.00056 1.32738
H -4.60203 -1.63596 1.42878
H -2.60462 -0.66640 3.78379
H -2.19920 -1.84872 2.51176
H -1.19873 -0.37659 2.71704
H -4.56874 1.91985 -2.32035
H -4.52355 2.01729 -0.54886
H -3.07562 2.44264 -1.52075
H -5.21569 -0.53495 -2.42253
H -4.47657 -1.69922 -1.29788
H -5.47612 -0.35116 -0.67762
H -3.21372 0.22488 -3.57854
H -1.68262 0.50050 -2.70279
H -2.41452 -1.12902 -2.74527
H -1.16902 4.63084 0.99556
H -1.36586 5.12970 -0.71566
H -2.10260 3.60266 -0.13650
H 1.16982 4.63056 0.99543
H 2.10306 3.60257 -0.13708
H 1.36618 5.12972 -0.71576

TS (3-1)_{NH}

SCF = -1314.45230236
H(0 K) = -1313.777272
H(298 K) = -1313.736008
G(298 K) = -1313.845277
SCF (Corr) = -1984.81195635
Low Freq. = -801.8131cm⁻¹, 24.9289cm⁻¹

80

C -1.12536 2.38298 -0.20594
N 0.06299 1.68780 -0.12266
C 1.23298 2.40863 -0.07726
C 1.26336 3.80678 -0.12438
C 0.04582 4.49322 -0.21532
C -1.15882 3.78865 -0.25355
Rh 0.06643 -0.34775 -0.13587
N -0.17658 -2.69629 -0.02598
B -1.60306 -3.11897 0.62929
H -1.46682 -3.13320 1.83795
O 2.40079 1.74498 0.02291
P 2.37677 -0.01326 0.02022
C 3.30516 -0.27942 1.69856
C 2.21111 -0.23456 2.79089
O -2.27294 1.71394 -0.24993
P -2.30037 -0.07870 0.01872
C -3.18677 -0.01542 1.77692
C -2.07071 -0.19737 2.82914
C -3.53612 -0.33017 -1.47898
C -4.01976 -1.78677 -1.63099
C -4.76600 0.59341 -1.31369
C -2.74784 0.09634 -2.74066
C -3.85761 1.36190 1.99395
C -4.24915 -1.12445 1.93423
C 3.49463 -0.26213 -1.52914
C 4.86440 0.43499 -1.40415
C 3.68743 -1.77231 -1.78912
C 2.69426 0.36128 -2.69866
C 4.00747 -1.65431 1.71142
C 4.33507 0.83864 1.97586

H -1.94392 -4.17959 0.14073
H 2.22705 4.31646 -0.08791
H 0.03952 5.58639 -0.25264
H -2.12858 4.28405 -0.31814
H -0.01644 -1.64566 0.80457
C -0.22909 -2.84242 -1.51896
C 0.89695 -3.59589 0.49810
H -2.36703 -2.19287 0.29531
H -3.39131 -0.05339 -3.62608
H -2.46350 1.15981 -2.71033
H -1.83360 -0.50266 -2.89258
H -5.36949 0.52239 -2.23673
H -5.41475 0.28158 -0.48026
H -4.48624 1.64810 -1.17720
H -4.71840 -1.82316 -2.48665
H -3.20469 -2.49613 -1.83603
H -4.55923 -2.14906 -0.74323
H -4.34234 1.33574 2.98636
H -3.13342 2.18973 1.99899
H -4.63630 1.58696 1.25093
H -2.51956 -0.10804 3.83538
H -1.59800 -1.18868 2.75620
H -1.28980 0.57665 2.74014
H -4.67787 -1.04089 2.94938
H -5.08324 -1.01187 1.22337
H -3.82702 -2.13392 1.83252
H 3.23553 0.17036 -3.64258
H 1.68576 -0.07959 -2.79314
H 2.58884 1.45264 -2.59006
H 5.37605 0.38253 -2.38231
H 4.76675 1.49861 -1.13592
H 5.51957 -0.06010 -0.66986
H 4.26019 -1.89853 -2.72528
H 4.25216 -2.27759 -0.99048
H 2.72874 -2.29915 -1.92748
H 2.69026 -0.35724 3.77899
H 1.67489 0.72907 2.79736
H 1.46345 -1.03572 2.67123
H 4.77611 0.65273 2.97176
H 5.15937 0.85346 1.24864
H 3.86965 1.83497 1.99437
H 4.39864 -1.83778 2.72809
H 3.32714 -2.48795 1.47359
H 4.86664 -1.69191 1.02268
H 0.58593 -4.63556 0.30012
H 1.85827 -3.39894 -0.00073
H 0.99101 -3.46056 1.58492
H -0.43056 -3.90957 -1.72969
H -1.05481 -2.24639 -1.92613
H 0.71926 -2.54485 -1.99171

Int (3-1)_{NH1}

SCF = -1314.49023712
H(0 K) = -1313.813031
H(298 K) = -1313.771952
G(298 K) = -1313.881338
SCF (Corr) = -1984.85207847
Low Freq. = 13.9563cm⁻¹, 24.3693cm⁻¹

80

C -1.09845 2.36338 -0.21702
N 0.09026 1.66751 -0.14286
C 1.26331 2.37358 -0.14512
C 1.31454 3.76693 -0.24267
C 0.09893 4.46176 -0.33371
C -1.11255 3.77167 -0.32130
Rh 0.05706 -0.40695 -0.00851

N -0.23015 -2.51471 0.01143
 B -1.64954 -2.83732 0.65951
 H -1.58875 -2.73785 1.86474
 O 2.43022 1.69247 -0.05273
 P 2.40858 -0.05717 0.05712
 C 3.44985 -0.18850 1.67579
 C 2.58299 0.46773 2.77658
 O -2.24401 1.70561 -0.19801
 P -2.31534 -0.15145 0.06557
 C -3.34276 0.00970 1.74134
 C -2.32236 -0.03051 2.90101
 C -3.39499 -0.34656 -1.56615
 C -3.87304 -1.79522 -1.78586
 C -4.62946 0.58188 -1.51147
 C -2.48184 0.09405 -2.73450
 C -4.10489 1.35399 1.81308
 C -4.35458 -1.14896 1.87498
 C 3.37834 -0.40867 -1.57572
 C 4.58195 0.53079 -1.79839
 C 3.83775 -1.88166 -1.60355
 C 2.33358 -0.15027 -2.69102
 C 3.70604 -1.66701 2.03594
 C 4.79113 0.56732 1.55828
 H -2.10933 -3.88825 0.24916
 H 2.28308 4.26853 -0.24325
 H 0.10338 5.55304 -0.41104
 H -2.07687 4.27805 -0.38408
 H 0.00543 -0.39143 1.50220
 C -0.18006 -2.95018 -1.41092
 C 0.75511 -3.33648 0.76931
 H -2.46837 -1.93104 0.24978
 H -3.03404 -0.02863 -3.68354
 H -2.18891 1.15220 -2.65339
 H -1.56719 -0.52007 -2.81339
 H -5.13174 0.53631 -2.49493
 H -5.36418 0.25165 -0.76001
 H -4.35983 1.62997 -1.31858
 H -4.47736 -1.81960 -2.71088
 H -3.04860 -2.51323 -1.90812
 H -4.50901 -2.15695 -0.96314
 H -4.65890 1.36100 2.76887
 H -3.43131 2.22187 1.80685
 H -4.83984 1.47952 1.00588
 H -2.87243 0.07315 3.85407
 H -1.77017 -0.98206 2.93457
 H -1.60668 0.80781 2.84375
 H -4.90038 -1.01801 2.82669
 H -5.10710 -1.14021 1.06943
 H -3.87354 -2.13723 1.90119
 H 2.79111 -0.37071 -3.67231
 H 1.44335 -0.79792 -2.59580
 H 2.00394 0.90190 -2.71097
 H 4.94942 0.38072 -2.82981
 H 4.30628 1.59073 -1.69084
 H 5.41957 0.31443 -1.12013
 H 4.24110 -2.11105 -2.60613
 H 4.64188 -2.07914 -0.87675
 H 3.01575 -2.59271 -1.41410
 H 3.12417 0.39605 3.73678
 H 2.39559 1.53512 2.57782
 H 1.61377 -0.04402 2.90459
 H 5.24075 0.63026 2.56549
 H 5.51081 0.03657 0.91633
 H 4.66542 1.59467 1.18363
 H 4.29230 -1.69845 2.97159
 H 2.77297 -2.22060 2.21658
 H 4.29104 -2.20034 1.26978
 H 0.45105 -4.39998 0.73582

H 1.76340 -3.24382 0.33418
 H 0.76788 -3.01491 1.81936
 H -0.46764 -4.01614 -1.48645
 H -0.89542 -2.37014 -2.01444
 H 0.83346 -2.82694 -1.82968

Int(3-1)_{NH2}

SCF = -1314.49347724
 H(0 K) = -1313.814193
 H(298 K) = -1313.772093
 G(298 K) = -1313.885592
 BP86 (D3) = -1.17646507316
 SCF (Corr) = -1984.85507582
 Low Freq. = 23.0470cm⁻¹, 28.8021cm⁻¹

80
 C -1.46826 -2.43922 -0.11709
 N -0.23370 -1.83487 -0.04515
 C 0.87173 -2.65348 -0.05101
 C 0.78142 -4.05079 -0.10312
 C -0.48745 -4.63584 -0.16155
 C -1.63038 -3.82942 -0.17181
 Rh -0.05308 0.19124 0.05642
 N 1.12068 3.51961 0.03137
 B 1.00502 4.01714 -1.53907
 H 1.98187 4.71277 -1.74261
 O 2.09682 -2.09337 -0.01230
 P 2.20888 -0.33944 0.01401
 C 3.24308 -0.10620 -1.59427
 C 2.21742 -0.23731 -2.74620
 O -2.57309 -1.66557 -0.14439
 P -2.36310 0.07022 0.00117
 C -3.27390 0.61069 -1.60330
 C -2.27477 0.31995 -2.74957
 C -3.34890 0.35016 1.62863
 C -3.18557 1.82810 2.05008
 C -4.84153 -0.01604 1.51208
 C -2.66526 -0.55619 2.68019
 C -4.57576 -0.18145 -1.85070
 C -3.55826 2.12717 -1.53162
 C 3.21462 -0.15926 1.64493
 C 4.61301 -0.80468 1.58398
 C 3.33305 1.34419 1.98213
 C 2.36122 -0.85445 2.73259
 C 3.86146 1.30858 -1.60896
 C 4.33927 -1.18088 -1.75972
 H -0.05749 4.61591 -1.59876
 H 1.70110 -4.63758 -0.10209
 H -0.58609 -5.72410 -0.20391
 H -2.63997 -4.23943 -0.22436
 H 2.00483 2.99832 0.12254
 C 0.00816 2.58804 0.36028
 C 1.16659 4.67154 0.98397
 H 0.99919 2.97764 -2.19039
 H -3.10715 -0.34479 3.67035
 H -2.82004 -1.62543 2.46511
 H -1.57950 -0.36378 2.74301
 H -5.29057 0.01541 2.52135
 H -5.39945 0.69885 0.88694
 H -4.99148 -1.03190 1.11348
 H -3.72242 1.98370 3.00290
 H -2.12921 2.09024 2.22687
 H -3.60940 2.53490 1.31866
 H -4.95223 0.08460 -2.85475
 H -4.40541 -1.26903 -1.83538
 H -5.36892 0.06020 -1.12909
 H -2.73659 0.62833 -3.70478

H -1.33042 0.87702 -2.63163
H -2.03763 -0.75442 -2.82591
H -3.96436 2.45424 -2.50531
H -4.30968 2.37924 -0.76559
H -2.64683 2.72402 -1.35424
H 2.82216 -0.66970 3.71948
H 1.32926 -0.46091 2.75687
H 2.31519 -1.94441 2.58161
H 5.05234 -0.79156 2.59794
H 4.57044 -1.85463 1.25415
H 5.30077 -0.25192 0.92462
H 3.87751 1.45391 2.93708
H 3.89919 1.91150 1.22430
H 2.34220 1.80995 2.12614
H 2.74658 -0.09435 -3.70556
H 1.75038 -1.23636 -2.77038
H 1.42271 0.52397 -2.67995
H 4.77890 -1.06456 -2.76660
H 5.15646 -1.07604 -1.03195
H 3.93333 -2.20142 -1.68784
H 4.38824 1.44760 -2.57006
H 3.09903 2.10625 -1.56523
H 4.60871 1.45396 -0.81115
H 0.24660 5.25906 0.85026
H 1.25303 4.32830 2.02882
H 2.02491 5.30145 0.71367
H -0.93122 3.15289 0.29610
H -0.02535 1.88160 -0.57429
H 0.10854 2.13639 1.36867

TS (1-3)_{BH1}

SCF = -1315.66799222
H(0 K) = -1314.972668
H(298 K) = -1314.930668
G(298 K) = -1315.042876
SCF (Corr) = -1986.02532325
Low Freq. = -450.7307cm⁻¹, 10.1419cm⁻¹

82

C 1.05570 -1.69969 -1.67733
C 1.03057 -2.66478 -2.69362
C -0.20086 -3.26171 -2.99672
C -1.35812 -2.89899 -2.29619
C -1.24585 -1.91080 -1.30493
N -0.06366 -1.30597 -1.00865
O -2.34446 -1.55341 -0.60403
P -2.35750 -0.02719 0.29519
C -3.53601 0.91892 -0.93774
C -3.80887 2.35627 -0.43538
Rh 0.01305 0.26916 0.47110
B -0.01994 2.25770 -0.70875
N 0.89475 3.58318 -0.32493
C 3.38494 1.57605 -1.51842
C 3.71624 0.94009 -0.14572
C 5.14598 0.36745 -0.23892
O 2.24142 -1.13851 -1.32207
P 2.27435 -0.29869 0.22183
C 2.89203 -1.77821 1.34435
C 1.79487 -2.87003 1.39053
C -3.39151 -0.64472 1.83936
C -2.44452 -1.14864 2.94847
C -4.19502 0.54861 2.40649
C -4.33192 -1.81397 1.46317
C 4.16080 -2.46145 0.77929
C 3.14867 -1.22378 2.76210
C -2.78460 0.94498 -2.29241
C -4.88069 0.19281 -1.16056

C 3.67471 1.97782 1.00409
H 0.36587 1.91600 -1.80972
H -1.12625 2.73844 -0.72662
H -0.25693 -4.02192 -3.78118
H -3.36513 1.57135 -2.99393
H -1.77428 1.37068 -2.21824
H -2.71816 -0.06241 -2.73441
H -4.31946 2.91214 -1.24284
H -4.47177 2.37494 0.44182
H -2.88588 2.90144 -0.19125
H -5.40456 0.70203 -1.99024
H -4.74310 -0.85975 -1.45350
H -5.54652 0.24106 -0.28515
H -3.06658 -1.53679 3.77481
H -1.79898 -1.97573 2.60919
H -1.81136 -0.34677 3.35872
H -4.88508 -2.10837 2.37340
H -5.07289 -1.55286 0.69721
H -3.76810 -2.69140 1.11213
H -4.63213 0.24646 3.37494
H -3.56112 1.43194 2.59808
H 0.82672 -2.51068 1.76837
H 2.14012 -3.66599 2.07435
H -5.02920 0.84771 1.75454
H 1.63513 -3.33439 0.40398
H 3.42437 -2.05864 3.43112
H 3.98301 -0.50291 2.78499
H 2.25605 -0.73868 3.19260
H 4.29345 -3.42262 1.30725
H 4.06468 -2.68730 -0.29473
H 5.07620 -1.87959 0.93949
H 5.81046 1.17731 -0.59256
H 5.53661 0.03592 0.73474
H 5.22359 -0.45892 -0.96146
H 4.01110 2.47704 -1.65572
H 3.62179 0.87713 -2.33569
H 2.32364 1.84427 -1.63631
H 4.26965 2.86635 0.72396
H 2.65014 2.29541 1.26469
H 4.11663 1.57537 1.93047
H 1.95650 -2.93745 -3.20219
H -2.33141 -3.34825 -2.49904
H 0.06795 1.76580 1.00507
H 0.07459 -0.10166 2.20506
H -0.04203 -0.88837 1.92021
C 0.88983 4.52960 -1.48914
C 0.46631 4.29948 0.91731
H 1.87214 3.28823 -0.18510
H -0.58040 4.61102 0.78852
H 0.52987 3.61300 1.77387
H 1.09957 5.18374 1.09367
H -0.15344 4.80479 -1.70102
H 1.47708 5.43252 -1.25467
H 1.30810 4.01987 -2.36715

Int (1-3)_{BH1}

SCF = -1315.67192357
H(0 K) = -1314.974939
H(298 K) = -1314.932716
G(298 K) = -1315.043961
SCF (Corr) = -1986.03033427
Low Freq. = 23.0413cm⁻¹, 30.7524cm⁻¹

82

C -1.09677 -1.50470 1.75509
C -1.08491 -2.40640 2.82917
C 0.12673 -3.04340 3.13151

C 1.27993 -2.78438 2.37892
 C 1.18725 -1.84879 1.33585
 N 0.02456 -1.20674 1.04365
 O 2.27724 -1.58574 0.57757
 P 2.35485 -0.05436 -0.32408
 C 3.57220 0.84153 0.91951
 C 3.80082 2.30473 0.47364
 Rh -0.02351 0.26668 -0.52527
 B 0.01341 2.02333 0.83451
 N -0.73321 3.42203 0.37272
 C -3.49963 1.74104 1.34219
 C -3.72664 1.06572 -0.03283
 C -5.18546 0.56427 -0.05962
 O -2.26842 -0.92506 1.38001
 P -2.30270 -0.23476 -0.24151
 C -2.94808 -1.81179 -1.20542
 C -1.89705 -2.94588 -1.11295
 C 3.37742 -0.68289 -1.87029
 C 2.42267 -1.15811 -2.98600
 C 4.18464 0.51350 -2.42844
 C 4.30356 -1.86937 -1.51581
 C -4.24819 -2.38939 -0.59261
 C -3.16568 -1.40016 -2.67762
 C 2.90069 0.78798 2.31608
 C 4.93569 0.12700 1.04836
 C -3.53841 2.05247 -1.21425
 H -0.50675 1.69145 1.88595
 H 1.14447 2.41759 0.97912
 H 0.16973 -3.75864 3.95814
 H 3.49575 1.41785 3.00217
 H 1.87093 1.16967 2.32250
 H 2.90945 -0.23523 2.72395
 H 4.40761 2.81048 1.24679
 H 4.35567 2.37547 -0.47370
 H 2.85806 2.86147 0.37317
 H 5.48721 0.60836 1.87675
 H 4.82377 -0.93822 1.30420
 H 5.56477 0.21996 0.15017
 H 3.04020 -1.48468 -3.84173
 H 1.81169 -2.02217 -2.67838
 H 1.75827 -0.35547 -3.34320
 H 4.80876 -2.19441 -2.44333
 H 5.08427 -1.61575 -0.78829
 H 3.73265 -2.72592 -1.12585
 H 4.63632 0.21096 -3.38997
 H 3.54580 1.39069 -2.63263
 H -0.90107 -2.67183 -1.48819
 H -2.25616 -3.78713 -1.73234
 H 5.00747 0.82281 -1.76765
 H -1.79156 -3.32258 -0.08289
 H -3.48887 -2.28415 -3.25616
 H -3.95445 -0.63679 -2.78600
 H -2.24530 -1.01648 -3.14946
 H -4.39196 -3.40711 -0.99721
 H -4.18291 -2.47955 0.50369
 H -5.14465 -1.81381 -0.85024
 H -5.83851 1.43205 0.14805
 H -5.48444 0.16796 -1.04187
 H -5.38894 -0.18966 0.71510
 H -4.08080 2.68075 1.38046
 H -3.85840 1.09103 2.15542
 H -2.44220 1.95053 1.56071
 H -4.13675 2.96353 -1.03249
 H -2.48553 2.33541 -1.38407
 H -3.89355 1.61735 -2.16369
 H -2.00620 -2.60695 3.37810
 H 2.23379 -3.27374 2.58136
 H -0.07337 1.48659 -1.52674

H -0.08865 -0.47039 -2.19646
 H 0.03526 -1.17485 -1.81104
 C -0.80428 4.34728 1.55250
 C -0.08800 4.12615 -0.77881
 H -1.70311 3.21416 0.09492
 H 0.94444 4.37474 -0.49348
 H -0.06561 3.45057 -1.64485
 H -0.63766 5.04929 -1.02400
 H 0.22114 4.52284 1.90872
 H -1.27132 5.30373 1.26556
 H -1.38099 3.86853 2.35480

TS (1-3)_{BH2}

SCF = -1315.67017251
 H(0 K) = -1314.974899
 H(298 K) = -1314.932646
 G(298 K) = -1315.044137
 SCF (Corr) = -1986.02766937
 Low Freq. = -273.8401cm⁻¹, 17.5143cm⁻¹

82

C 1.08725 -1.58217 -1.69746
 C 1.07397 -2.52693 -2.73338
 C -0.13759 -3.17602 -3.00880
 C -1.28972 -2.88220 -2.26820
 C -1.19496 -1.90485 -1.26421
 N -0.03063 -1.25585 -0.98970
 O -2.28925 -1.60183 -0.53015
 P -2.35741 -0.03919 0.31422
 C -3.55555 0.82511 -0.96976
 C -3.82319 2.29034 -0.55250
 Rh 0.01661 0.30683 0.48845
 B -0.02656 2.06796 -0.82803
 N 0.75559 3.44271 -0.36490
 C 3.49601 1.69228 -1.41228
 C 3.74815 1.02680 -0.03706
 C 5.18729 0.47140 -0.05456
 O 2.25778 -0.98105 -1.35843
 P 2.29805 -0.22836 0.23591
 C 2.92291 -1.78253 1.25033
 C 1.81239 -2.86416 1.25418
 C -3.40083 -0.62609 1.86090
 C -2.44446 -1.07399 2.98413
 C -4.21549 0.57828 2.38770
 C -4.32319 -1.82169 1.52819
 C 4.16456 -2.44886 0.60768
 C 3.23708 -1.32141 2.69022
 C -2.84751 0.76436 -2.34714
 C -4.90368 0.08597 -1.11840
 C 3.63289 2.03754 1.13283
 H 0.48137 1.71737 -1.87785
 H -1.15841 2.46871 -0.93422
 H -0.18182 -3.92459 -3.80529
 H -3.44355 1.36020 -3.06217
 H -1.82997 1.17765 -2.33509
 H -2.81270 -0.26670 -2.73390
 H -4.41196 2.77433 -1.35306
 H -4.41178 2.36339 0.37392
 H -2.89619 2.86804 -0.42694
 H -5.44302 0.54116 -1.96927
 H -4.76918 -0.98262 -1.34768
 H -5.55427 0.18853 -0.23664
 H -3.05688 -1.42639 3.83344
 H -1.79974 -1.91358 2.67637
 H -1.81121 -0.25093 3.34732
 H -4.84615 -2.11196 2.45749
 H -5.08964 -1.59244 0.77774

H -3.74788 -2.69289 1.17996
H -4.65950 0.29955 3.36009
H -3.58487 1.46753 2.56309
H 0.83598 -2.50838 1.61065
H 2.13524 -3.67630 1.93009
H -5.04477 0.85920 1.72175
H 1.67595 -3.30857 0.25519
H 3.53818 -2.19943 3.28956
H 4.07565 -0.60593 2.72392
H 2.36829 -0.86440 3.19131
H 4.27997 -3.45135 1.05752
H 4.04378 -2.58847 -0.47840
H 5.09775 -1.90478 0.79505
H 5.86585 1.30722 -0.30666
H 5.50821 0.08313 0.92393
H 5.32953 -0.30704 -0.81890
H 4.11404 2.60571 -1.48788
H 3.79248 1.01641 -2.22943
H 2.44108 1.94680 -1.59173
H 4.25881 2.92259 0.91897
H 2.59714 2.36619 1.32724
H 3.99682 1.60461 2.07962
H 1.99438 -2.74709 -3.27624
H -2.24599 -3.37420 -2.45193
H 0.05194 1.53351 1.48396
H 0.20849 -0.22842 2.37188
H 0.16250 -1.00235 2.46124
C 0.83608 4.36769 -1.54509
C 0.13901 4.15936 0.79539
H 1.72264 3.20710 -0.09807
H -0.89166 4.42896 0.52304
H 0.11467 3.48367 1.66121
H 0.71128 5.07048 1.03303
H -0.18840 4.56893 -1.89039
H 1.32779 5.31201 -1.26033
H 1.39404 3.87778 -2.35392

TS (1-3)_{HH}

SCF = -1315.66529167
H(0 K) = -1314.977092
H(298 K) = -1314.934586
G(298 K) = -1315.047162
SCF (Corr) = -1986.02205294
Low Freq. = -878.0562cm⁻¹, 22.9812cm⁻¹

82

C -1.17118 -2.53168 -0.26543
C -1.21281 -3.92211 -0.44420
C 0.00026 -4.61156 -0.54563
C 1.21327 -3.92193 -0.44463
C 1.17150 -2.53151 -0.26584
N 0.00012 -1.82899 -0.23661
O 2.33364 -1.86860 -0.10059
P 2.32719 -0.12213 0.09052
C 3.29948 0.05663 1.75014
C 3.08978 1.51358 2.22423
Rh 0.00005 0.23934 0.17938
P -2.32709 -0.12238 0.09056
C -3.29953 0.05698 1.75002
C -4.80715 -0.24938 1.63920
O -2.33336 -1.86895 -0.09975
C 3.40275 0.23176 -1.48591
C 2.48570 -0.04482 -2.69943
C 3.85629 1.70498 -1.47999
C 4.62836 -0.70798 -1.58345
C -3.40263 0.23081 -1.48603
C -2.48535 -0.04551 -2.69943

C -4.62783 -0.70945 -1.58361
C -3.85677 1.70385 -1.48026
C 2.66532 -0.92097 2.76513
C 4.80715 -0.24946 1.63935
C -2.66537 -0.92010 2.76552
C -3.09007 1.51416 2.22349
B -0.00046 2.88069 -1.72144
N -0.00049 3.59975 -0.43081
C -1.21711 4.27628 0.05176
C 1.21618 4.27611 0.05188
H 0.00031 -5.69634 -0.68497
H 3.14160 -0.75583 3.74805
H 1.58191 -0.75584 2.88219
H 2.83306 -1.97178 2.48037
H 3.60516 1.64795 3.19189
H 3.51288 2.25305 1.52344
H 2.02329 1.74439 2.37943
H 5.24349 -0.19319 2.65280
H 5.00136 -1.26204 1.25305
H 5.34406 0.48258 1.01618
H 3.04759 0.19928 -3.61863
H 2.20341 -1.10933 -2.76012
H 1.56942 0.56298 -2.68438
H 5.05490 -0.59015 -2.59572
H 5.42192 -0.46097 -0.86647
H 4.35385 -1.76656 -1.46136
H 4.45059 1.89515 -2.39169
H 3.00022 2.39651 -1.50426
H -1.56913 0.56239 -2.68418
H -3.04712 0.19858 -3.61870
H 4.49873 1.94962 -0.61753
H -2.20290 -1.10999 -2.76016
H -4.45043 1.89394 -2.39239
H -4.49994 1.94809 -0.61823
H -3.00095 2.39573 -1.50374
H -5.05450 -0.59165 -2.59583
H -4.35280 -1.76792 -1.46172
H -5.42143 -0.46295 -0.86653
H -5.24366 -0.19246 2.65255
H -5.34407 0.48215 1.01544
H -5.00115 -1.26226 1.25358
H -3.14207 -0.75485 3.74822
H -2.83260 -1.97105 2.48101
H -1.58206 -0.75452 2.88293
H -3.60543 1.64884 3.19112
H -2.02360 1.74520 2.37857
H -3.51330 2.25326 1.52240
H -0.00002 1.62087 1.06336
H -2.18072 -4.42389 -0.48072
H 2.18124 -4.42358 -0.48149
H 0.00042 1.08269 -1.34283
H -1.04535 2.78334 -2.30708
H 1.04433 2.78370 -2.30736
H -0.00040 2.13080 0.24609
H 1.21371 4.33950 1.15555
H 2.11026 3.72493 -0.26962
H 1.28211 5.30572 -0.34710
H -1.21569 4.33802 1.15553
H -1.28181 5.30656 -0.34571
H -2.11131 3.72637 -0.27154
H -0.00006 -0.31805 1.67857

Alternative Dehydrogenation Pathways from 4.

TS (4-4)₁

SCF = -1315.25522724

H(0 K)= -1314.571897
H(298 K)= -1314.530288
G(298 K)= -1314.640564
SCF (Corr) = -1985.57584587
Low Freq. = -332.8164cm⁻¹, 28.3797cm⁻¹

81
N 0.00000 1.86064 -0.17606
C 1.16784 2.55479 -0.17038
C 1.21588 3.95879 -0.18729
C 0.00001 4.65704 -0.20135
C -1.21586 3.95880 -0.18728
C -1.16783 2.55479 -0.17037
O 2.32426 1.85304 -0.15031
H 2.18297 4.46500 -0.18683
H 0.00001 5.75136 -0.21457
H -2.18295 4.46502 -0.18681
O -2.32425 1.85305 -0.15029
Rh 0.00000 -0.32357 -0.12102
P -2.24755 0.07036 -0.00165
C -3.48408 -0.25895 -1.47295
C -3.16264 -0.04750 1.71955
P 2.24755 0.07035 -0.00166
H 0.00000 -0.95869 -1.66521
C -4.67239 0.72739 -1.53692
C -2.65437 -0.08364 -2.76602
C -3.99664 -1.71180 -1.38373
C -4.62936 0.42266 1.71368
C -3.07816 -1.51101 2.19926
C 3.48408 -0.25898 -1.47295
C 3.16264 -0.04749 1.71955
C 3.99663 -1.71183 -1.38372
C 2.65438 -0.08367 -2.76602
C 4.67240 0.72736 -1.53692
C 3.07816 -1.51100 2.19928
C 4.62936 0.42267 1.71367
C 2.35607 0.84380 2.69012
H 0.00000 -0.76798 1.48217
B -0.00001 -2.40789 -1.27655
N -0.00002 -3.39909 0.10564
H -1.00359 -2.74364 -1.88591
H 1.00355 -2.74366 -1.88592
H -0.00004 -2.65168 0.83461
C -1.22460 -4.23046 0.23167
C 1.22458 -4.23042 0.23171
C -2.35607 0.84378 2.69013
H -3.31520 -0.26625 -3.63467
H -2.25647 0.94125 -2.85373
H -1.80836 -0.78384 -2.81281
H -5.19390 0.57566 -2.50081
H -5.41125 0.56904 -0.73933
H -4.33397 1.77409 -1.49817
H -4.62814 -1.92832 -2.26611
H -3.16275 -2.43274 -1.39086
H -4.61824 -1.88524 -0.48832
H -5.00110 0.44072 2.75585
H -4.73460 1.44058 1.30577
H -5.28763 -0.25737 1.14868
H -2.73522 0.68863 3.71770
H -1.28470 0.58127 2.66861
H -2.46549 1.91230 2.44412
H -3.50245 -1.58688 3.21818
H -3.64877 -2.20051 1.55310
H -2.02799 -1.84597 2.23940
H 3.31520 -0.26629 -3.63467
H 1.80836 -0.78387 -2.81281
H 2.25648 0.94122 -2.85374
H 5.19390 0.57562 -2.50082

H 4.33398 1.77406 -1.49819
H 5.41125 0.56902 -0.73933
H 4.62815 -1.92835 -2.26609
H 4.61823 -1.88527 -0.48830
H 3.16274 -2.43276 -1.39085
H 2.73521 0.68866 3.71769
H 2.46549 1.91231 2.44410
H 1.28470 0.58128 2.66860
H 5.00110 0.44073 2.75584
H 5.28763 -0.25737 1.14868
H 4.73460 1.44058 1.30576
H 3.50245 -1.58686 3.21820
H 2.02799 -1.84596 2.23942
H 3.64877 -2.20050 1.55313
H -1.20990 -4.82157 1.16434
H -2.09993 -3.56689 0.22812
H -1.28634 -4.90626 -0.63525
H 1.20988 -4.82153 1.16438
H 1.28639 -4.90621 -0.63520
H 2.09990 -3.56681 0.22820

Int(4-4) 1

SCF = -1315.26431493
H(0 K)= -1314.578894
H(298 K)= -1314.537201
G(298 K)= -1314.648163
SCF (Corr) = -1985.58633570
Low Freq. = 25.1338cm⁻¹, 27.8278cm⁻¹

81
N -0.15979 1.88173 -0.17021
C -1.36608 2.49622 -0.10971
C -1.49809 3.89604 -0.15040
C -0.32491 4.65960 -0.22311
C 0.93194 4.03887 -0.23633
C 0.96637 2.63346 -0.19242
O -2.47623 1.73087 0.00822
H -2.49098 4.34774 -0.11351
H -0.39030 5.75184 -0.25518
H 1.86518 4.60410 -0.26626
O 2.16117 1.99899 -0.16607
Rh -0.03780 -0.29892 0.08017
P 2.19291 0.21665 0.04372
C 3.21831 0.15410 1.69910
C 3.36052 -0.05938 -1.50139
P -2.29576 -0.04820 0.05328
H -0.01402 -0.05965 1.69770
C 4.70135 0.55912 1.61018
C 2.50684 1.09878 2.69273
C 3.09633 -1.30123 2.20526
C 4.54631 0.92806 -1.59734
C 3.88245 -1.51094 -1.47997
C -3.43867 -0.37330 1.59489
C -3.27141 -0.39707 -1.59313
C -3.99024 -1.81530 1.51334
C -2.54368 -0.25748 2.84819
C -4.59189 0.64634 1.72690
C -3.12084 -1.89810 -1.91964
C -4.75842 0.00704 -1.55873
C -2.56381 0.42681 -2.69338
H -0.06241 -0.78711 -1.51452
B -0.18640 -2.40764 0.70331
N 0.87009 -3.41204 -0.10494
H 0.13156 -2.55997 1.87713
H -1.27102 -2.93723 0.47080
H 1.75330 -2.88259 -0.12930
C 1.09963 -4.68226 0.64158

C	0.47448	-3.68866	-1.51378	C	-3.07999	-0.63921	1.75534
C	2.47361	0.14930	-2.74845	C	-3.61738	0.81621	-1.03831
H	2.94916	0.95748	3.69670	P	2.24997	-0.07192	0.13036
H	2.63636	2.15532	2.40664	H	-0.05717	-0.07912	1.57962
H	1.42786	0.87465	2.74919	C	-4.55625	-1.07284	1.66160
H	5.13051	0.55248	2.63019	C	-2.25314	-1.85248	2.23977
H	5.29816	-0.14488	1.00703	C	-2.92100	0.52012	2.76424
H	4.83212	1.57477	1.20376	C	-4.75709	-0.11459	-1.51017
H	3.55697	-1.37953	3.20818	C	-4.18726	2.02464	-0.26175
H	2.03948	-1.60947	2.28201	C	-2.86486	1.31332	-2.29272
H	3.63156	-2.01391	1.55004	C	3.16650	-0.32383	1.81841
H	4.98899	0.84458	-2.60793	C	3.55521	0.43626	-1.25625
H	4.21393	1.96874	-1.46207	C	3.27233	1.07156	2.47502
H	5.34618	0.71799	-0.87431	C	2.27147	-1.22577	2.69659
H	3.05175	-0.12601	-3.65082	C	4.55047	-0.99427	1.70133
H	1.55167	-0.45320	-2.70175	C	4.45524	1.59943	-0.78513
H	2.17436	1.20616	-2.84863	C	4.44597	-0.74505	-1.70545
H	4.51791	-1.68747	-2.36807	C	2.72846	0.90499	-2.47402
H	4.49575	-1.73175	-0.58936	H	-0.00982	1.20505	-1.51178
H	3.05692	-2.24262	-1.53403	B	-0.27233	2.50618	0.95471
H	-3.16919	-0.44965	3.74086	N	0.10085	3.38789	-0.29727
H	-1.71336	-0.97919	2.82738	C	-0.87820	4.40156	-0.70592
H	-2.10645	0.74985	2.94666	C	1.44583	3.96034	-0.24961
H	-5.12713	0.44372	2.67371	H	0.05300	2.04367	-1.02076
H	-4.21487	1.67987	1.76504	H	0.50301	2.64619	1.88910
H	-5.32722	0.57815	0.91290	H	-1.43863	2.68682	1.26656
H	-4.51362	-2.04843	2.45973	H	1.75249	4.36724	-1.23356
H	-4.72018	-1.94451	0.69741	H	1.52181	4.77597	0.50118
H	-3.18073	-2.55299	1.38475	H	2.15357	3.17227	0.05182
H	-2.98411	0.14014	-3.67563	H	-1.86820	3.93796	-0.83540
H	-2.72588	1.50858	-2.55830	H	-0.98146	5.20723	0.05306
H	-1.47922	0.22472	-2.70102	H	-0.58302	4.87160	-1.66420
H	-5.18400	-0.12392	-2.57183	H	3.65575	0.95775	3.50631
H	-5.35623	-0.61708	-0.87520	H	3.96732	1.73822	1.93873
H	-4.88819	1.06533	-1.27945	H	2.28714	1.56628	2.52742
H	-3.56549	-2.09764	-2.91305	H	4.95202	-1.16005	2.71874
H	-2.05672	-2.17974	-1.94971	H	4.48422	-1.97618	1.20500
H	-3.62972	-2.54589	-1.18784	H	5.28485	-0.37546	1.16262
H	1.79085	-5.34912	0.09549	H	2.74556	-1.33038	3.69028
H	1.50164	-4.44191	1.63515	H	1.26942	-0.78993	2.83485
H	0.12518	-5.17829	0.76810	H	2.15926	-2.23388	2.26460
H	1.25138	-4.27170	-2.03892	H	5.13697	-0.37674	-2.48744
H	-0.46720	-4.25781	-1.49362	H	5.05729	-1.15948	-0.89100
H	0.30306	-2.71666	-2.00314	H	3.85199	-1.56449	-2.13554

TS (4-4) 2

SCF = -1315.24311257
 H(0 K) = -1314.564234
 H(298 K) = -1314.522509
 G(298 K) = -1314.633189
 SCF (Corr) = -1985.56322065
 Low Freq. = -744.9623cm⁻¹, 17.7423cm⁻¹

81

N	-0.04923	-1.73145	-0.64589	H	-2.07518	2.03673	-2.04595
C	1.10237	-2.43002	-0.69704	H	-2.39796	0.48034	-2.84484
C	1.14114	-3.77680	-1.10960	H	-5.39557	0.45181	-2.21410
C	-0.07542	-4.38185	-1.45382	H	-4.36623	-0.99594	-2.04089
C	-1.28394	-3.67457	-1.36625	H	-5.40097	-0.46055	-0.69035
C	-1.21931	-2.33769	-0.93340	H	-4.86822	-1.47048	2.64571
O	2.24685	-1.81120	-0.33462	H	-5.23193	-0.23559	1.42500
H	2.09240	-4.31095	-1.14570	H	-4.70498	-1.87330	0.91872
H	-0.08449	-5.42645	-1.78147	H	-2.58114	-2.11467	3.26267
H	-2.24812	-4.12815	-1.60292	H	-2.40778	-2.73592	1.59892
O	-2.36324	-1.62218	-0.78921	H	-1.17602	-1.62218	2.27370
Rh	-0.03496	0.41467	0.07650	H	-3.26753	0.17731	3.75744
P	-2.29009	-0.05801	0.07731	H	-1.87011	0.83872	2.84914
				H	-3.51912	1.40363	2.48810

Int(4-4)2

SCF = -1154.64704428
H(0 K) = -1154.069755
H(298 K) = -1154.034068
G(298 K) = -1154.134114
SCF (Corr) = -1824.88077472
Low Freq. = 10.2801cm⁻¹, 22.1738cm⁻¹

69

N	-0.00000	1.46645	-0.16825
C	-1.17520	2.14053	-0.28623
C	-1.21823	3.52549	-0.51975
C	-0.00000	4.20943	-0.63303
C	1.21823	3.52550	-0.51972
C	1.17520	2.14053	-0.28620
O	-2.33462	1.44936	-0.17003
H	-2.18314	4.02773	-0.60655
H	-0.00000	5.28863	-0.81497
H	2.18314	4.02774	-0.60650
O	2.33461	1.44937	-0.16997
Rh	-0.00000	-0.63699	0.14907
P	2.24711	-0.31908	0.07524
C	3.36727	-0.38690	1.65387
C	3.20116	-0.91881	-1.50709
P	-2.24711	-0.31908	0.07523
H	0.00001	-0.58142	1.78614
C	4.68513	0.41095	1.53406
C	2.54813	0.22876	2.80989
C	3.63372	-1.87888	1.95159
C	4.72550	-0.69599	-1.50876
C	2.88525	-2.42681	-1.64196
C	2.58720	-0.15707	-2.70324
C	-3.36726	-0.38686	1.65387
C	-3.20115	-0.91886	-1.50709
C	-3.63367	-1.87882	1.95167
C	-2.54814	0.22890	2.80985
C	-4.68515	0.41095	1.53403
C	-2.88525	-2.42686	-1.64190
C	-4.72550	-0.69603	-1.50877
C	-2.58720	-0.15716	-2.70325
H	-0.00001	-1.01719	-1.46162
H	-0.00000	-2.19795	0.37852
H	2.98277	-0.59342	-3.63917
H	1.48855	-0.25287	-2.71274
H	2.85473	0.91202	-2.68393
H	3.31393	-2.79946	-2.59102
H	3.32538	-3.02179	-0.82326
H	1.79722	-2.60146	-1.65321
H	5.12112	-0.99592	-2.49735
H	4.99481	0.36102	-1.35258
H	5.24363	-1.31190	-0.75594
H	5.14422	0.47924	2.53780
H	5.42183	-0.06234	0.87156
H	4.50315	1.43902	1.18131
H	3.13223	0.13071	3.74391
H	2.35751	1.30230	2.64110
H	1.57573	-0.27220	2.93454
H	4.15599	-1.96982	2.92198
H	2.69163	-2.44972	2.02221
H	4.27430	-2.35231	1.18801
H	-3.13224	0.13087	3.74389
H	-1.57573	-0.27203	2.93453
H	-2.35756	1.30243	2.64101
H	-4.15592	-1.96974	2.92207
H	-4.27424	-2.35232	1.18813
H	-2.69156	-2.44963	2.02231

H	-5.14422	0.47930	2.53778
H	-4.50321	1.43900	1.18120
H	-5.42186	-0.06242	0.87159
H	-5.12111	-0.99601	-2.49735
H	-5.24363	-1.31191	-0.75592
H	-4.99481	0.36098	-1.35264
H	-3.31392	-2.79954	-2.59096
H	-1.79722	-2.60151	-1.65314
H	-3.32538	-3.02182	-0.82319
H	-2.98275	-0.59353	-3.63917
H	-2.85472	0.91194	-2.68398
H	-1.48855	-0.25296	-2.71275

TS(4-4)3

SCF = -1154.62574810
H(0 K) = -1154.052336
H(298 K) = -1154.016500
G(298 K) = -1154.115506
SCF (Corr) = -1824.85972296
Low Freq. = -663.8201cm⁻¹, 20.9569cm⁻¹

69

N	-0.00000	1.42519	-0.35206
C	-1.17420	2.11866	-0.41421
C	-1.21654	3.50854	-0.60023
C	-0.00001	4.19946	-0.70231
C	1.21653	3.50854	-0.60022
C	1.17419	2.11866	-0.41420
O	-2.33290	1.42881	-0.27814
H	-2.18301	4.01302	-0.65182
H	-0.00001	5.28393	-0.84713
H	2.18300	4.01303	-0.65181
O	2.33289	1.42882	-0.27812
Rh	-0.00000	-0.69078	-0.16581
P	2.23179	-0.32233	0.05424
C	3.12643	-0.29912	1.77752
C	3.42050	-0.94928	-1.34665
P	-2.23179	-0.32233	0.05423
H	-0.00000	-1.55358	1.21105
C	4.38532	0.59273	1.83415
C	2.08893	0.26787	2.77152
C	3.44948	-1.75975	2.15638
C	4.90477	-0.57286	-1.17661
C	3.26662	-2.48667	-1.40419
C	2.89947	-0.33320	-2.66586
C	-3.12642	-0.29911	1.77752
C	-3.42051	-0.94929	-1.34665
C	-3.44942	-1.75975	2.15642
C	-2.08892	0.26794	2.77150
C	-4.38534	0.59270	1.83415
C	-3.26663	-2.48669	-1.40416
C	-4.90478	-0.57286	-1.17661
C	-2.89947	-0.33323	-2.66586
H	0.00000	-1.30318	-1.75017
H	0.00000	-2.10508	-1.00782
H	3.46413	-0.77270	-3.50921
H	1.82812	-0.54453	-2.81758
H	3.04610	0.75881	-2.68717
H	3.83885	-2.87421	-2.26764
H	3.65653	-2.98191	-0.49914
H	2.21222	-2.78222	-1.53028
H	5.45355	-0.87594	-2.08833
H	5.04754	0.51246	-1.04957
H	5.37657	-1.09558	-0.32895
H	4.69276	0.70245	2.89099
H	5.24011	0.16965	1.28884
H	4.18234	1.60105	1.43881

H	2.51290	0.22561	3.79233
H	1.84814	1.32152	2.54945
H	1.15178	-0.30967	2.74552
H	3.79382	-1.79880	3.20656
H	2.55637	-2.40408	2.07314
H	4.25200	-2.18698	1.53141
H	-2.51288	0.22568	3.79232
H	-1.15175	-0.30957	2.74550
H	-1.84817	1.32159	2.54941
H	-3.79374	-1.79878	3.20661
H	-4.25193	-2.18701	1.53147
H	-2.55628	-2.40404	2.07319
H	-4.69276	0.70244	2.89099
H	-4.18239	1.60102	1.43878
H	-5.24012	0.16958	1.28887
H	-5.45355	-0.87594	-2.08833
H	-5.37658	-1.09558	-0.32895
H	-5.04754	0.51246	-1.04957
H	-3.83886	-2.87423	-2.26761
H	-2.21224	-2.78224	-1.53025
H	-3.65655	-2.98191	-0.49911
H	-3.46414	-0.77274	-3.50921
H	-3.04610	0.75878	-2.68718
H	-1.82812	-0.54456	-2.81757

Int(4-4)3

SCF = -1154.62961213
H(0 K) = -1154.054876
H(298 K) = -1154.019177
G(298 K) = -1154.116467
SCF (Corr) = -1824.86326191
Low Freq. = -5.6204cm⁻¹, 41.9243cm⁻¹

69

N	-0.00000	1.41272	-0.44872
C	-1.17553	2.10897	-0.45094
C	-1.21646	3.50627	-0.58745
C	0.00000	4.19778	-0.67283
C	1.21646	3.50627	-0.58745
C	1.17553	2.10897	-0.45093
O	-2.33144	1.42516	-0.29683
H	-2.18227	4.01417	-0.60426
H	0.00000	5.28704	-0.77812
H	2.18227	4.01416	-0.60425
O	2.33144	1.42515	-0.29681
Rh	-0.00001	-0.69712	-0.27898
P	2.21871	-0.33151	0.05961
C	3.06420	-0.28860	1.81076
C	3.48889	-0.94307	-1.27923
P	-2.21872	-0.33150	0.05961
H	-0.00001	-2.14316	0.41985
C	4.27137	0.66393	1.93346
C	1.95582	0.19969	2.76806
C	3.44404	-1.73815	2.18057
C	4.96263	-0.56568	-1.03668
C	3.33913	-2.48092	-1.35011
C	3.04105	-0.32360	-2.62331
C	-3.06420	-0.28858	1.81076
C	-3.48890	-0.94309	-1.27923
C	-3.44411	-1.73811	2.18055
C	-1.95578	0.19964	2.76806
C	-4.27131	0.66402	1.93351
C	-3.33921	-2.48095	-1.35000
C	-4.96263	-0.56561	-1.03676
C	-3.04097	-0.32374	-2.62334
H	-0.00001	-1.14081	-2.11367
H	-0.00001	-1.86993	-1.70830

H	3.64891	-0.76016	-3.43773
H	1.98120	-0.53259	-2.84056
H	3.18734	0.76833	-2.63296
H	3.95049	-2.86836	-2.18663
H	3.68507	-2.97848	-0.42875
H	2.29119	-2.77695	-1.52305
H	5.56126	-0.88295	-1.91182
H	5.09768	0.52188	-0.92017
H	5.38851	-1.07221	-0.15554
H	4.53782	0.76578	3.00251
H	5.16498	0.29907	1.40825
H	4.02954	1.66881	1.55149
H	2.33115	0.15909	3.80810
H	1.66367	1.24218	2.55461
H	1.05462	-0.42725	2.68318
H	3.73881	-1.78040	3.24576
H	2.59125	-2.42705	2.04416
H	4.29578	-2.11380	1.58906
H	-2.33109	0.15904	3.80811
H	-1.05461	-0.42733	2.68315
H	-1.66359	1.24213	2.55464
H	-3.73887	-1.78036	3.24575
H	-4.29587	-2.11371	1.58904
H	-2.59135	-2.42705	2.04413
H	-4.53772	0.76589	3.00256
H	-4.02944	1.66888	1.55152
H	-5.16496	0.29920	1.40833
H	-5.56123	-0.88292	-1.91190
H	-5.38856	-1.07204	-0.15560
H	-5.09763	0.52197	-0.92034
H	-3.95056	-2.86842	-2.18651
H	-2.29128	-2.77704	-1.52289
H	-3.68521	-2.97842	-0.42861
H	-3.64881	-0.76033	-3.43775
H	-3.18721	0.76821	-2.63308
H	-1.98112	-0.53279	-2.84052

TS(4-4)4

SCF = -1154.62842193
H(0 K) = -1154.054941
H(298 K) = -1154.018272
G(298 K) = -1154.118993
SCF (Corr) = -1824.86306319
Low Freq. = -451.6964cm⁻¹, 15.4653cm⁻¹

69

N	0.00358	1.42393	-0.38977
C	-1.17051	2.12351	-0.36294
C	-1.20986	3.52455	-0.45690
C	0.00659	4.21665	-0.53267
C	1.22223	3.52067	-0.48158
C	1.18026	2.11991	-0.38655
O	-2.32900	1.44004	-0.22268
H	-2.17502	4.03397	-0.45101
H	0.00758	5.30857	-0.60561
H	2.18892	4.02704	-0.49480
O	2.33885	1.43196	-0.26933
Rh	0.00084	-0.67939	-0.23624
P	2.22436	-0.33439	0.03983
C	3.06535	-0.34103	1.78851
C	3.48251	-0.90980	-1.32303
P	-2.22088	-0.33336	0.04475
H	0.00045	-2.20396	0.28763
C	4.28954	0.58623	1.93354
C	1.96366	0.14798	2.75417
C	3.41969	-1.80503	2.12660
C	4.95954	-0.54813	-1.07679

C	3.32378	-2.44413	-1.43938	H	2.33055	0.06386	3.79467
C	3.02987	-0.24617	-2.64432	H	1.70453	1.20494	2.57153
C	-3.07852	-0.38749	1.78507	H	1.04483	-0.44880	2.64203
C	-3.47580	-0.86547	-1.33980	H	3.71977	-1.87363	3.18891
C	-3.49130	-1.84976	2.05904	H	2.55381	-2.47472	1.97976
C	-1.97260	0.01517	2.78496	H	4.26169	-2.18326	1.52266
C	-4.26930	0.57832	1.95521	H	-2.36788	-0.07080	3.81498
C	-3.33852	-2.39880	-1.48957	H	-1.08899	-0.63387	2.68052
C	-4.94878	-0.48490	-1.09735	H	-1.64620	1.05811	2.63337
C	-3.00322	-0.18045	-2.64317	H	-3.79756	-1.95087	3.11699
H	0.00407	-1.06719	-2.16159	H	-4.34490	-2.16986	1.43844
H	-0.00168	-1.85713	-2.10551	H	-2.65133	-2.54621	1.88767
H	3.63329	-0.65768	-3.47493	H	-4.55670	0.60396	3.02329
H	1.96989	-0.44686	-2.86615	H	-3.99979	1.60360	1.65522
H	3.17864	0.84504	-2.61940	H	-5.15795	0.27311	1.38521
H	3.93106	-2.80943	-2.28882	H	-5.53949	-0.75176	-1.99443
H	3.67009	-2.97019	-0.53411	H	-5.39107	-1.02939	-0.24748
H	2.27387	-2.73004	-1.61622	H	-5.07341	0.59708	-0.92854
H	5.55163	-0.84006	-1.96509	H	-3.94035	-2.73542	-2.35460
H	5.10160	0.53416	-0.92507	H	-2.29081	-2.69588	-1.66129
H	5.38656	-1.08594	-0.21491	H	-3.70328	-2.94080	-0.60135
H	4.55205	0.66335	3.00554	H	-3.60591	-0.56515	-3.48705
H	5.17882	0.21358	1.40631	H	-3.13681	0.91203	-2.59627
H	4.06847	1.60226	1.56890	H	-1.94449	-0.39169	-2.86118

References

1. Python Software Foundation. Python Language Reference, version 3.7.1 Available at <http://www.python.org>.
2. Anaconda Software Distribution. Computer software. Version 2-2.4.0. Anaconda, November 2016. Available at <https://anaconda.com>.
3. Jones E, Oliphant E, Peterson P, et al. SciPy: Open Source Scientific Tools for Python, 2001. Available at <http://www.scipy.org/> [Online; accessed 2019-05-14].
4. Hynes, M. J. Eqnmr: A Computer Program for the Calculation of Stability Constants from Nuclear Magnetic Resonance Chemical Shift Data. *Journal of the Chemical Society, Dalton Transactions* 1993, DOI:10.1039/DT9930000311 10.1039/DT9930000311, 311-312.
5. J. Cosier and A. M. J. Glazer, *J. Appl. Crystallogr.* **1986**, *19*, 105.
6. Z. Otwinowski and W. Minor, *Method Enzym.* **1997**, *276*, 307.
7. A. Altomare, G. Cascarano, C. Giacovazzo, A. Guagliardi, M. C. Burla, G. Polidori and M. Camalli, *J. Appl. Crystallogr.* **1994**, *27*, 435.
8. G. M. Sheldrick, *Acta Cryst. A* **2015**, *71*, 3.
9. P. W. Betteridge, J. R. Carruthers, R. I. Cooper, K. Prout and D. J. Watkin, *J. Appl. Crystallogr.* **2003**, *36*, 1487.
10. R. I. Cooper, A. L. Thompson and D. J. Watkin, *J. Appl. Crystallogr.* **2010**, *43*, 1100.
11. O. V. Dolomanov, L. J. Bourhis, R. J. Gildea, J. A. K. Howard and H. Puschmann, *J. Appl. Crystallogr.* **2009**, *42*, 339.
12. I. A. Guzei and M. Wendt, *Dalton Trans.* **2006**, 3991.
13. Gaussian 09, Revision D.01, M. J. Frisch, G. W. Trucks, H. B. Schlegel, G. E. Scuseria, M. A. Robb, J. R. Cheeseman, G. Scalmani, V. Barone, B. Mennucci, G. A. Petersson, H. Nakatsuji, M. Caricato, X. Li, H. P. Hratchian, A. F. Izmaylov, J. Bloino, G. Zheng, J. L. Sonnenberg, M. Hada, M. Ehara, K. Toyota, R. Fukuda, J. Hasegawa, M. Ishida, T. Nakajima, Y. Honda, O. Kitao, H. Nakai, T. Vreven, J. A. Montgomery, J. E. Peralta, F.

- Ogliaro, M. Bearpark, J. J. Heyd, E. Brothers, K. N. Kudin, V. N. Staroverov, R. Kobayashi, J. Normand, K. Raghavachari, A. Rendell, J. C. Burant, S. S. Iyengar, J. Tomasi, M. Cossi, N. Rega, J. M. Millam, M. Klene, J. E. Knox, J. B. Cross, V. Bakken, C. Adamo, J. Jaramillo, R. Gomperts, R. E. Stratmann, O. Yazyev, A. J. Austin, R. Cammi, C. Pomelli, J. W. Ochterski, R. L. Martin, K. Morokuma, V. G. Zakrzewski, G. A. Voth, P. Salvador, J. J. Dannenberg, S. Dapprich, A. D. Daniels, Farkas, J. B. Foresman, J. V. Ortiz, J. Cioslowski and D. J. Fox, Wallingford CT, 2013
14. A. D. Becke, *Phys. Rev. A*, 1988, **38**, 3098-3100.
 15. J. P. Perdew, *Phys. Rev. B*, 1986, **33**, 8822-8824.
 16. D. Andrae, U. Häußermann, M. Dolg, H. Stoll and H. Preuß, *Theor. Chim. Acta.*, 1990, **77**, 123-141.
 17. A. Hollwarth, M. Bohme, S. Dapprich, A. W. Ehlers, A. Gobbi, V. Jonas, K. F. Kohler, R. Stegmann, A. Veldkamp and G. Frenking, *Chem. Phys. Lett.* 1993, 208, 237.
 18. W. J. Hehre, R. Ditchfield and J. A. Pople, *J. Chem. Phys.*, 1972, **56**, 2257-2261.
 19. P. C. Hariharan and J. A. Pople, *Theor. Chim. Acta.*, 1973, **28**, 213-222.
 20. F. Weigend and R. Ahlrichs *Phys. Chem. Chem. Phys.* 2005, 7, 3297-3305; **8**, 2006, 1057.
 21. J. Tomasi, B. Mennucci and R. Cammi, *Chem. Rev.*, 2005, **105**, 2999-3094.
 22. S. Grimme, S. Ehrlich, L. Goerigk. *J. Comput. Chem.* 2011, **32**, 1456