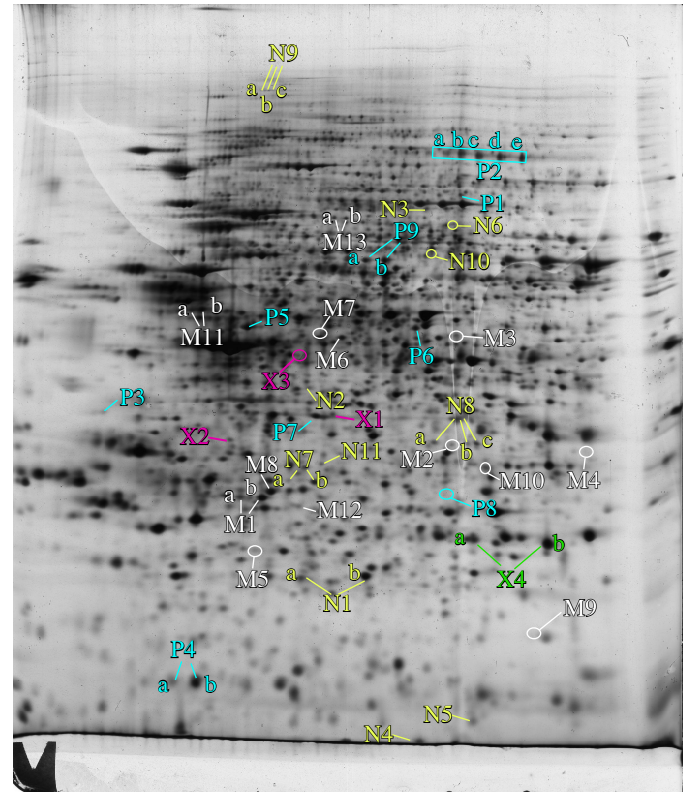
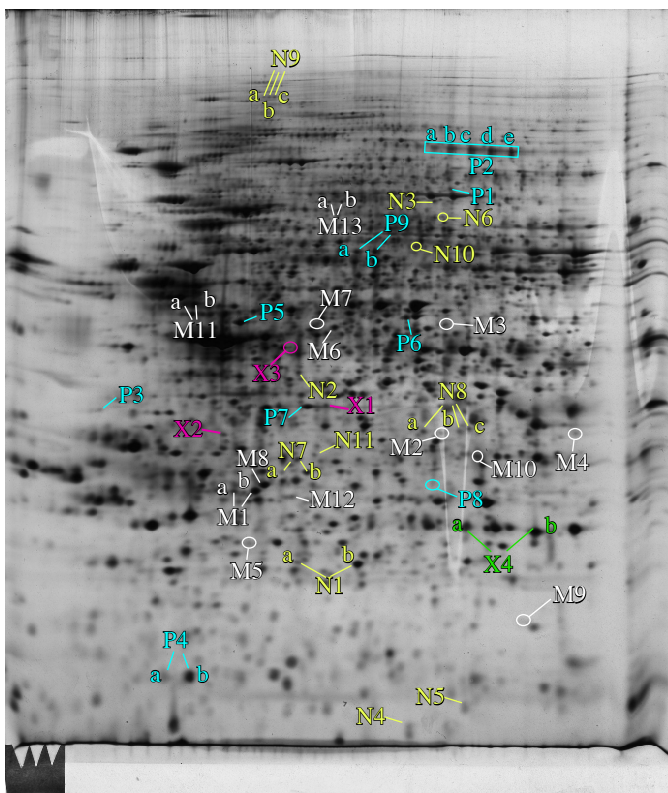


A



B



C

Supplementary Figure 2 : Proteomic analysis of total cell extracts by 2D electrophoresis

Total cell extracts of RAW274.7 cells were separated by two-dimensional gel electrophoresis. The first dimensions covered a 4-8 pH range and the second dimension a 15-200 kDa range. Total cellular proteins (150 μ g) were loaded on the first dimension gel.

A: gel obtained from control cells.

B: gel obtained from cells treated for 24 hours with 20 μ g/ml silver nanoparticles

C: gel obtained from cells treated for 24 hours with 20 μ g/ml silver nanoparticles and left to recover for 72hours

Only mitochondrial proteins (M) or proteins implied in nucleotide metabolism (N), protein production (P) and otherwise unclassified proteins (X) are shown in this figure