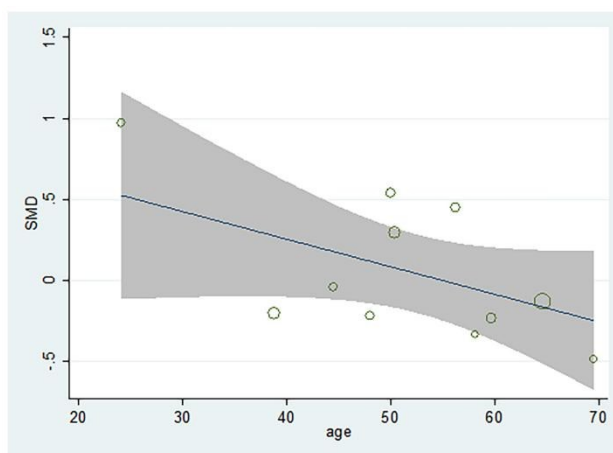
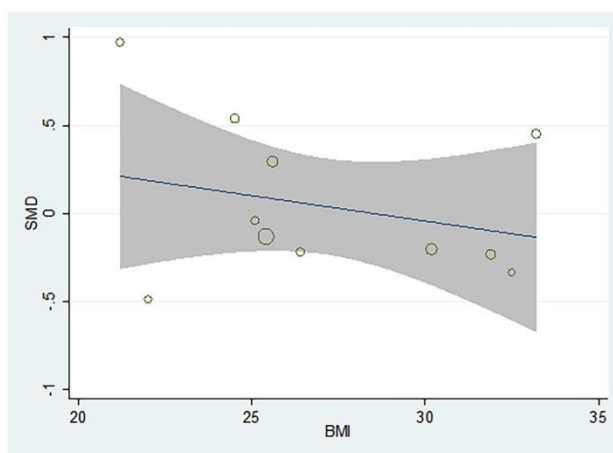


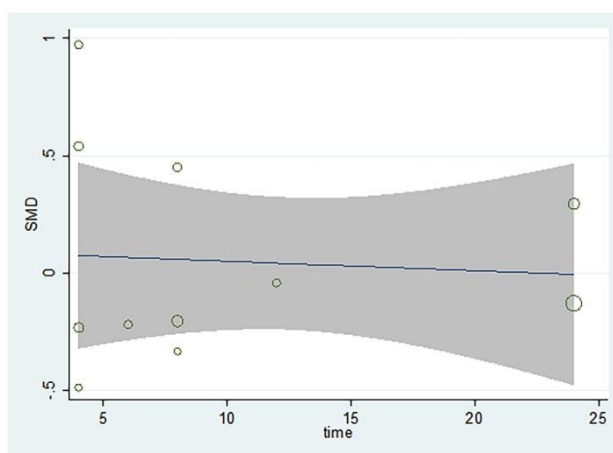
Appendix 2



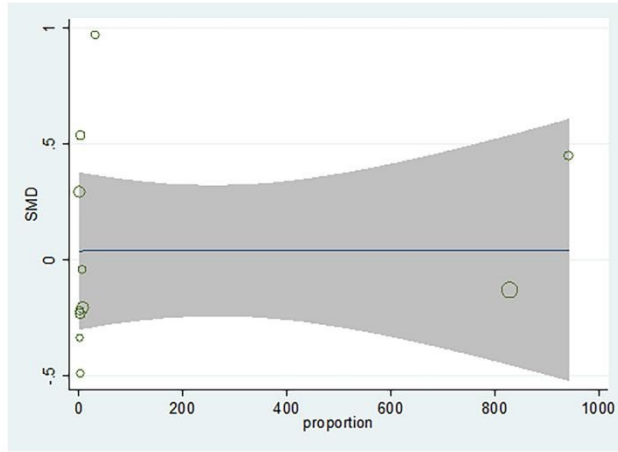
A: Regression analysis of age on fasting blood glucose



B: Regression analysis of BMI on fasting blood glucose

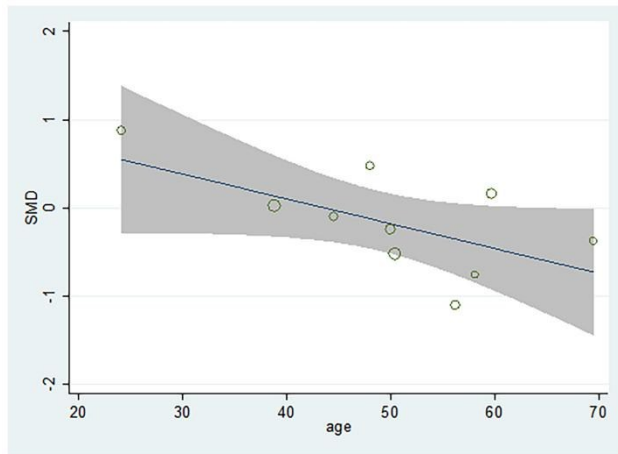


C: Regression analysis of intervention time on fasting blood glucose

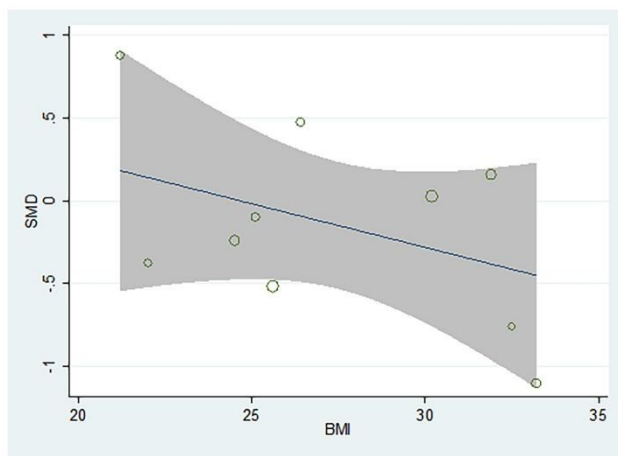


D: Regression analysis of proportion on fasting blood glucose

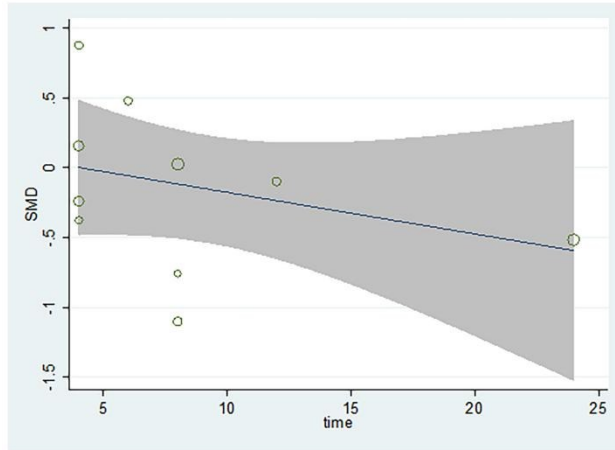
Fig. 1 meta-regression analyses of fasting blood glucose in different n-6/n-3 PUFA ratios



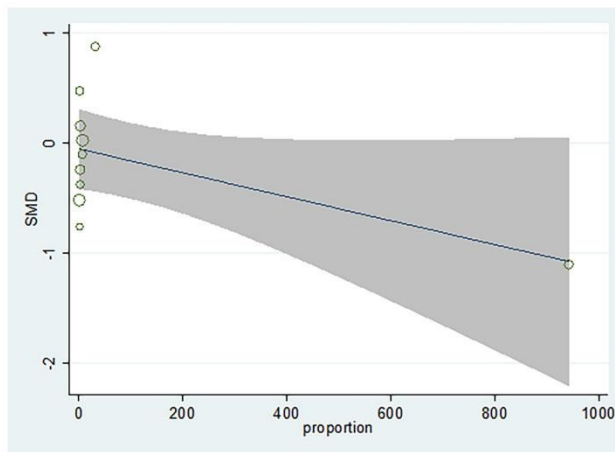
A: Regression analysis of age on fasting insulin



B: Regression analysis of BMI on fasting insulin



C: Regression analysis of intervention time on fasting insulin



D: Regression analysis of proportion on fasting insulin

Fig. 2 meta-regression analyses of fasting insulin in different n-6/n-3 PUFA ratios
 Proportion: n-6/n-3 PUFA ratio between the intervention group and the control group