

Supplementary Material

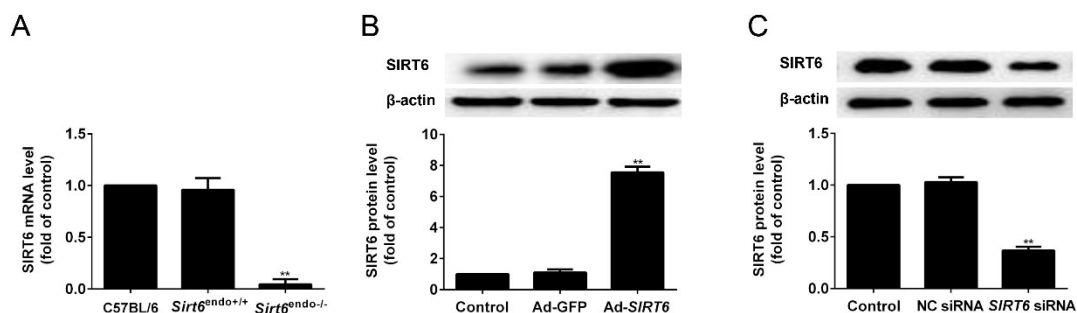


Fig. S1. Knockout, Knockdown and overexpression efficiency of SIRT6. (A) Total RNA samples from aortic intima of *Sirt6*^{endo-/-} mice were extracted. The expression of SIRT6 mRNA was measured by quantitative real-time PCR. (B) The HUVECs were transfected with *SIRT6* siRNA or NC siRNA for 48 h. The SIRT6 expression was determined by Western blotting. (C) The HUVECs were infected with *SIRT6* adenovirus vector for 48 h. The expression of SIRT6 protein was measured by Western blotting. ** $P < 0.01$ vs control group. Results are expressed as mean \pm SEM (n=3).