

Supplementary information

S1 Fig. The pathophysiological feature of hippocampus by H & E staining including dentate gyrus (DG) and CA3 region as well as CA1 region.

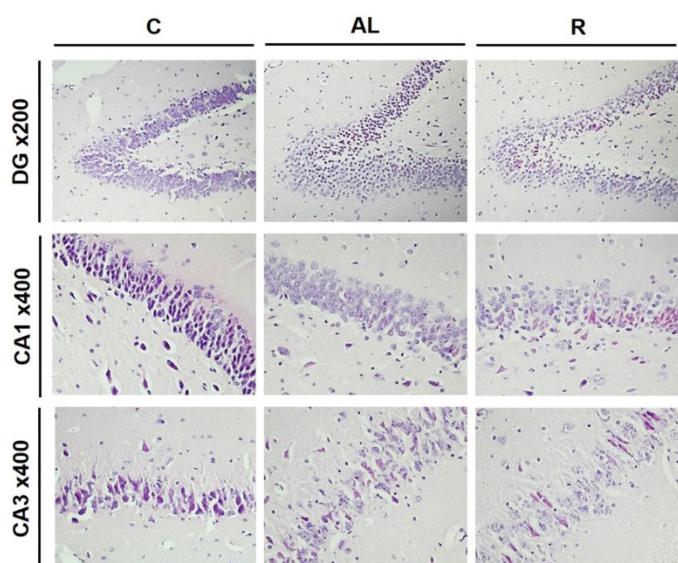


Table S1. Antibodies used

Antibody	Host	Species Cross-Reactivity	Catalog No	Source
AMPK	Rabbit	Human, Mouse, Rat, Monkey, Hamster	2532	CST
Phospho-AMPK	Rabbit	Human, Mouse, Rat, D. melanogaster, S. cerevisiae; phospho-Thr ¹⁷²	4188	CST
Akt	Rabbit	Human, Mouse, Rat, Monkey, D. melanogaster	4691	CST
Phospho-Akt	Rabbit	Human, Mouse, Rat, Monkey, Hamster, Bovine, D. melanogaster, Zebrafish	4060	CST
GSK-3 β	Rabbit	Human, Mouse, Rat, Hamster	5558	CST
Phospho-GSK-3 β	Rabbit	Human, Mouse, Rat, Monkey; pSer ⁹	12456	CST
PP2A	Rabbit	Human, Mouse, Rat, Bovine, Chicken	07-1216	Millipore
Phospho-PP2A	Rabbit	Human, Mouse, Rat, Bovine, Chicken	05-547	Millipore
Tau	Rabbit	Human, Mouse	PA5-27287	Invitrogen
Phospho-tau	Rabbit	Human, Mouse, Rat; pSer ^{199/202}	44-768G	Invitrogen
Phospho-tau	Rabbit	Human, Rat; pSer ³⁹⁶	710298	Invitrogen
Beta-actin	Rabbit	Human, Mouse, Rat, Monkey, Mink, Hamster, Bovine, D. melanogaster, Zebrafish, Dog	4967	CST
2 nd Antibody	Goat	Rabbit, HRP-conjugated	7074	CST

CST, Cell Signaling Technology