

## Supplementary data

### New $\gamma$ -pyrone glycoside from *Pachira glabra* and assessment of its gastro-protective activity using alcohol- induced gastric ulcer in rat model

#### List of supplementary figures

**Figure S1.** Scheme of extraction of *P. glabra* leaves and isolation of HMGLu.

**Figure S2.**  $^1\text{H}$  NMR data for HMGLu.

**Figure S3.** APT data for HMGLu.

**Figure S4.**  $^1\text{H}$  COSY data for HMGLu.

**Figure S5.** HSQC data for HMGLu.

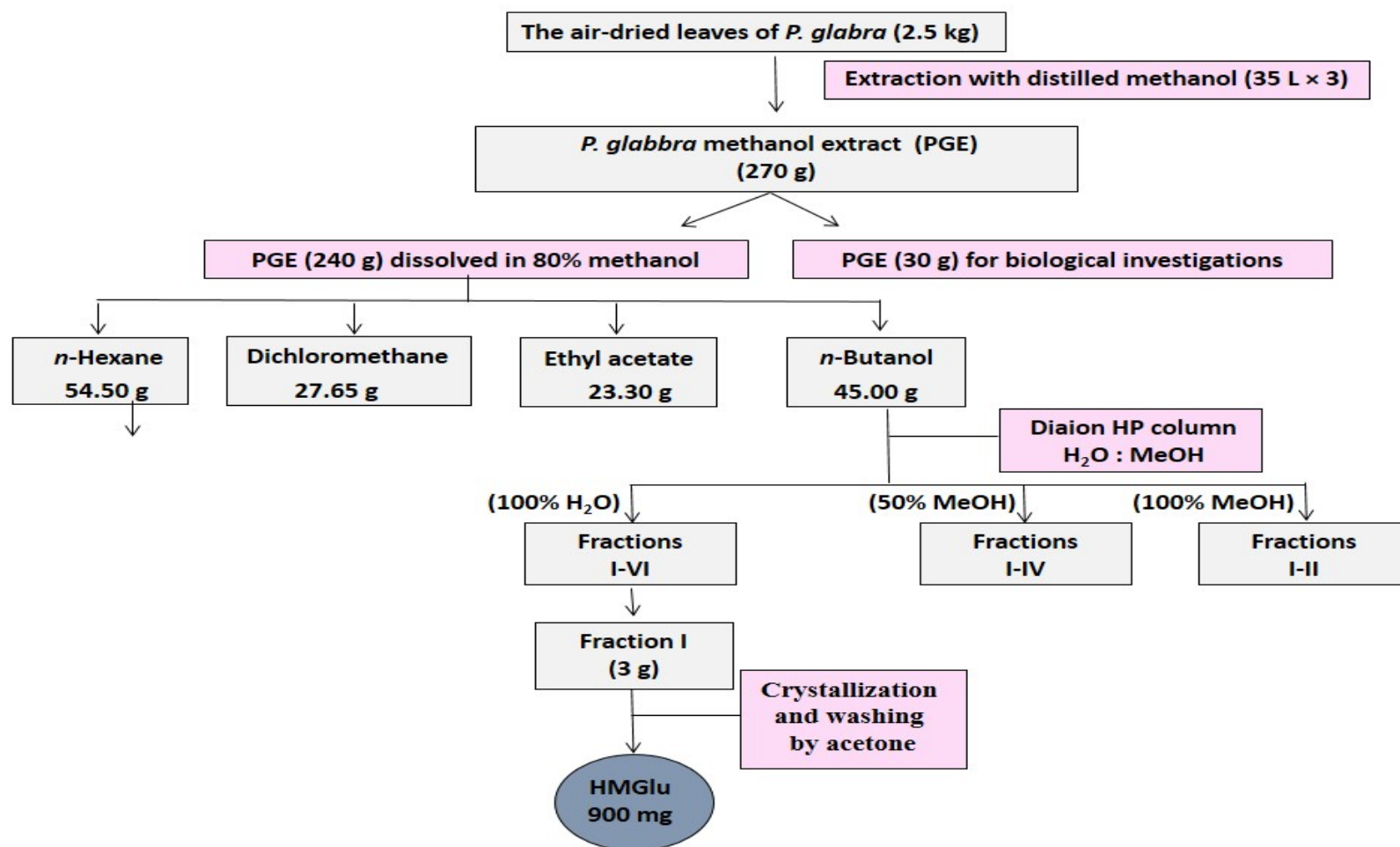
**Figure S6.** HMBC data for HMGLu.

**Figure S7.** ESI<sup>-</sup> spectral data for HMGLu.

**Figure S8.** HR-ESI<sup>+</sup> for HMGLu.

**Figure S9.** Experimental scheme of *in vivo* assessment of the gastroprotective activity of HMGLu.

**Figure S10.** Mechanism diagram of the *in vivo* gastroprotective activity of HMGLu.



**Figure S1.** Scheme of extraction of *P. glabra* leaves and isolation of HMGLu.

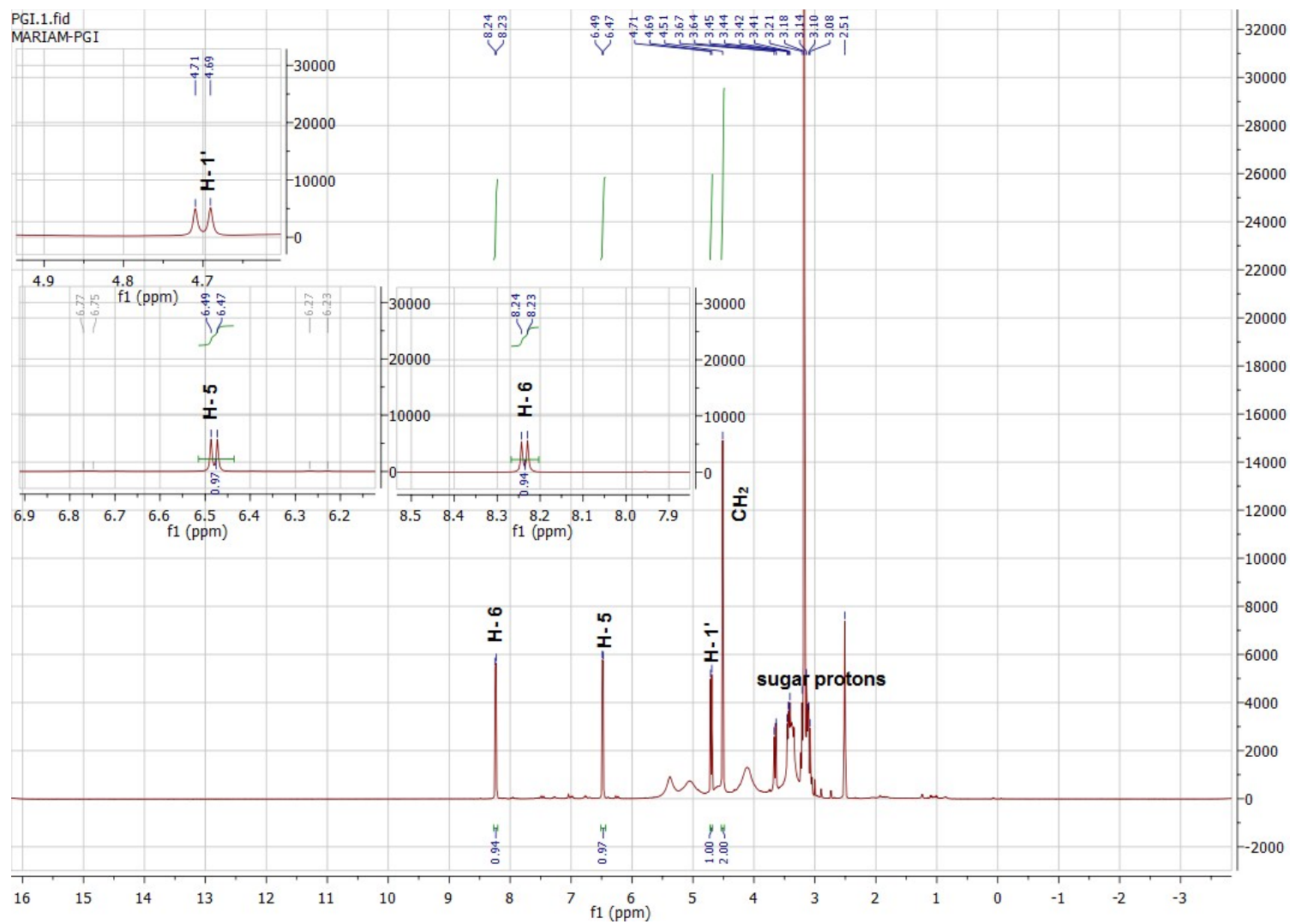


Figure S2.  $^1\text{H}$  NMR data for HMGlucose.

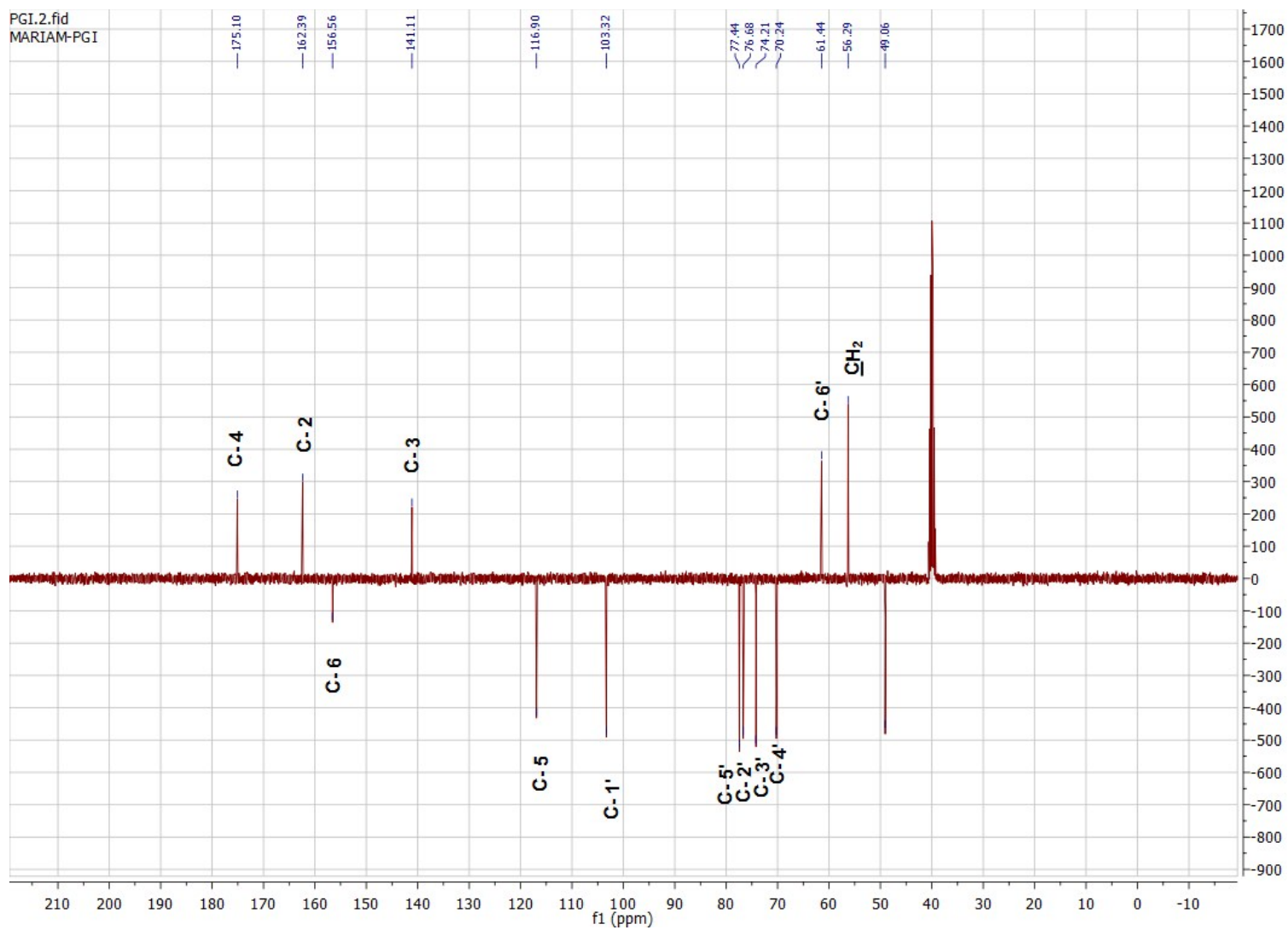
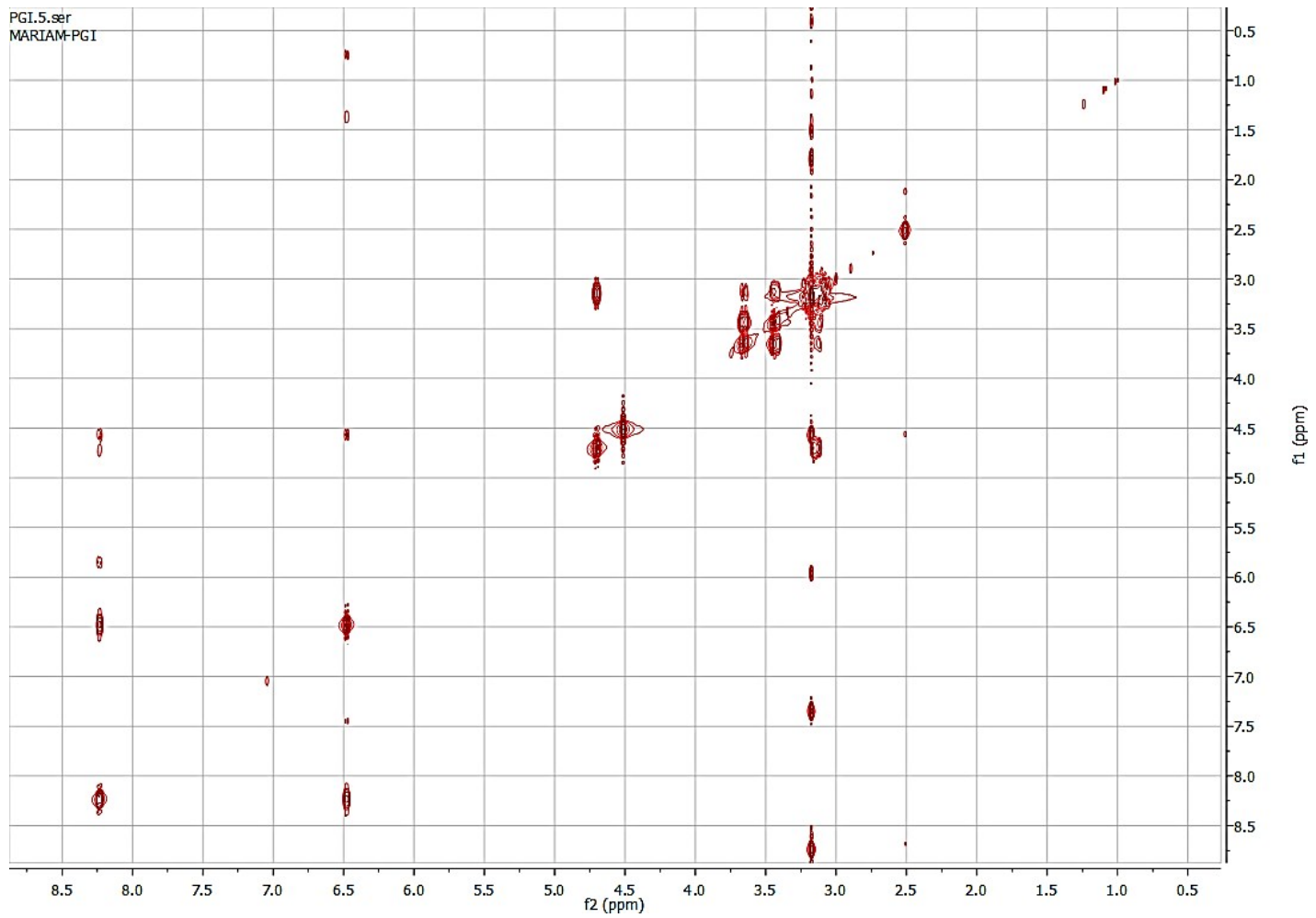


Figure S3. APT data for HMGlucose.



**Figure S4.**  $^1\text{H}$  COSY data for HMGlucose.

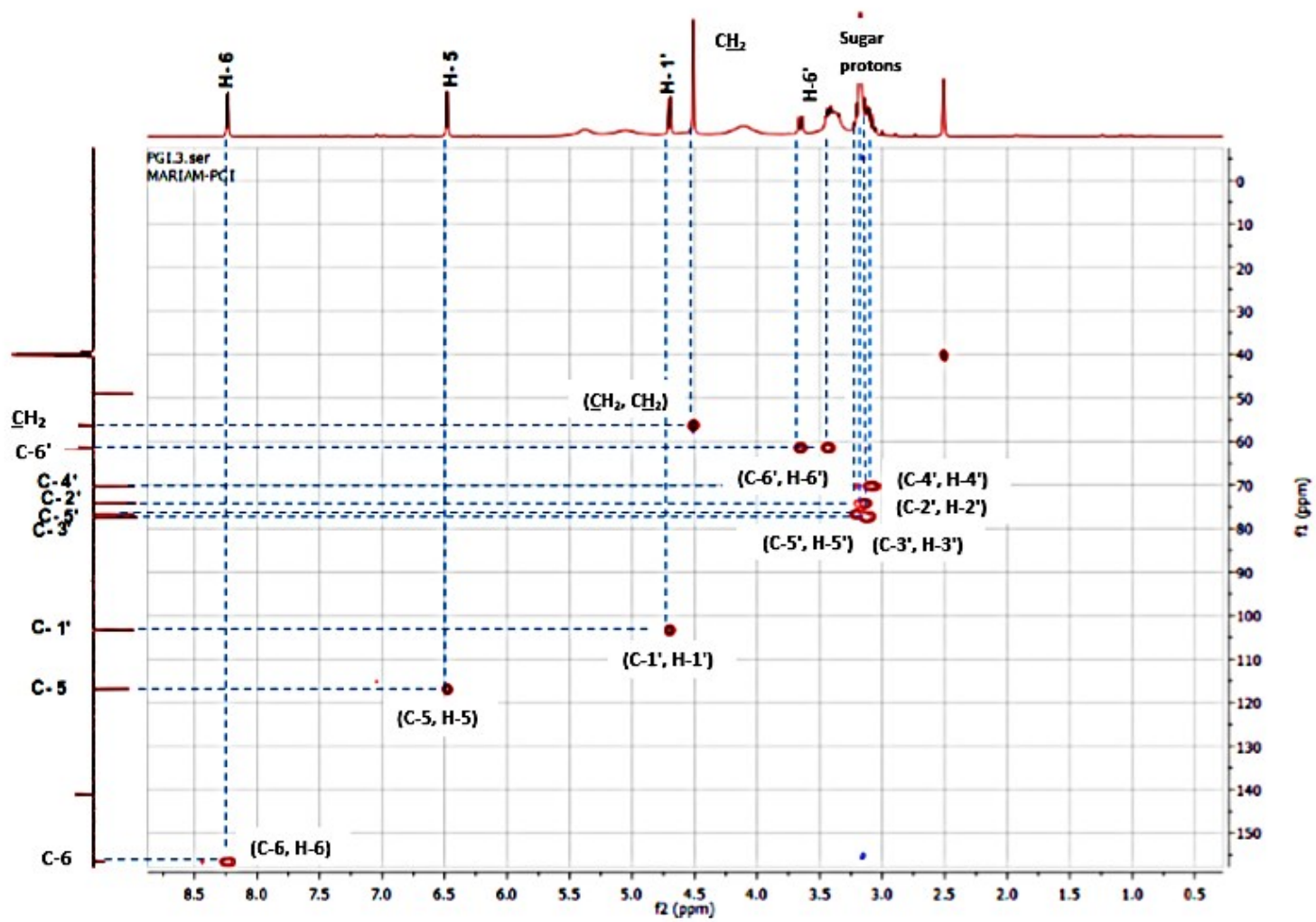


Figure S5. HSQC data for HMglu.

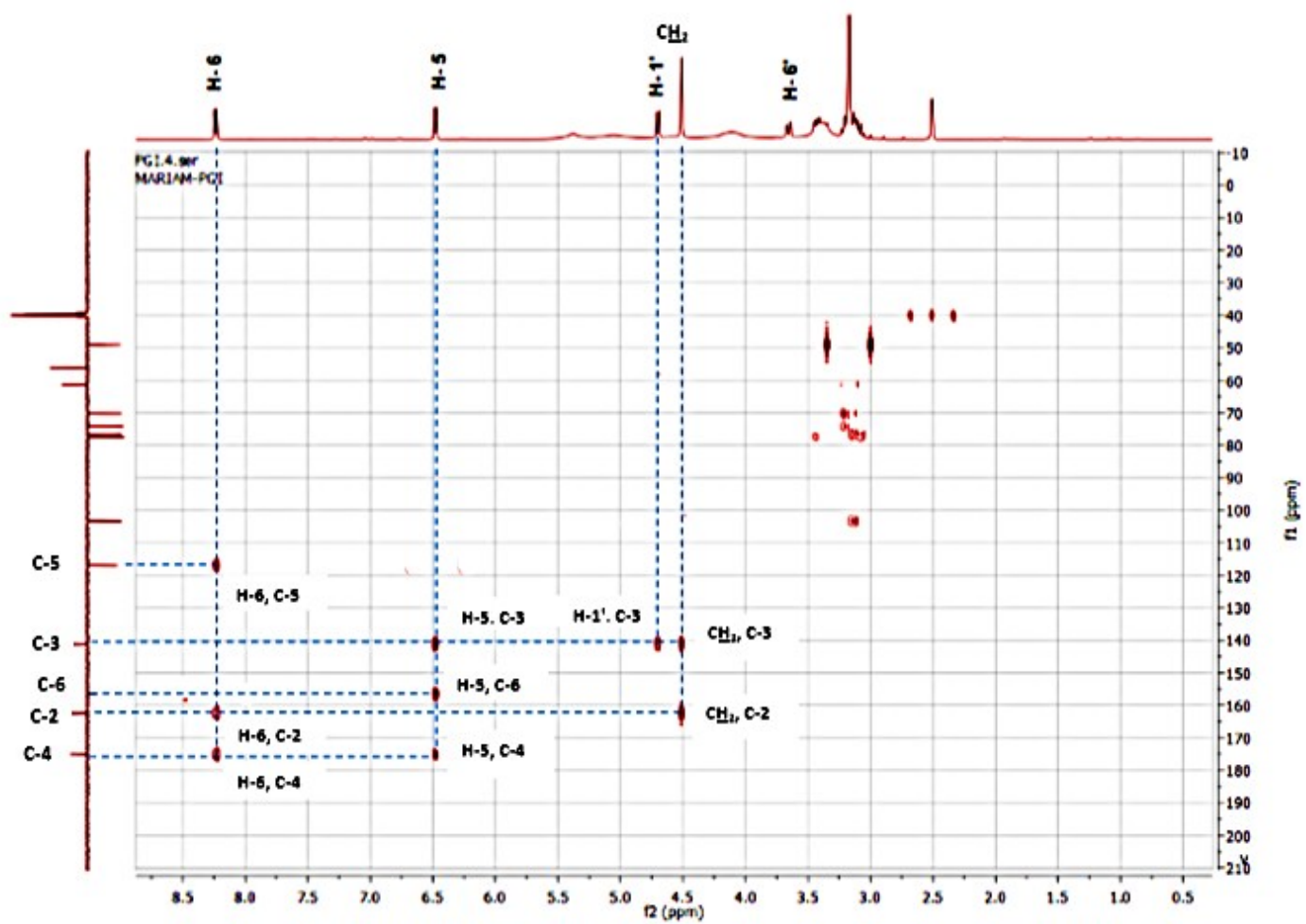


Figure S6. HMBC data for HMGlucose.

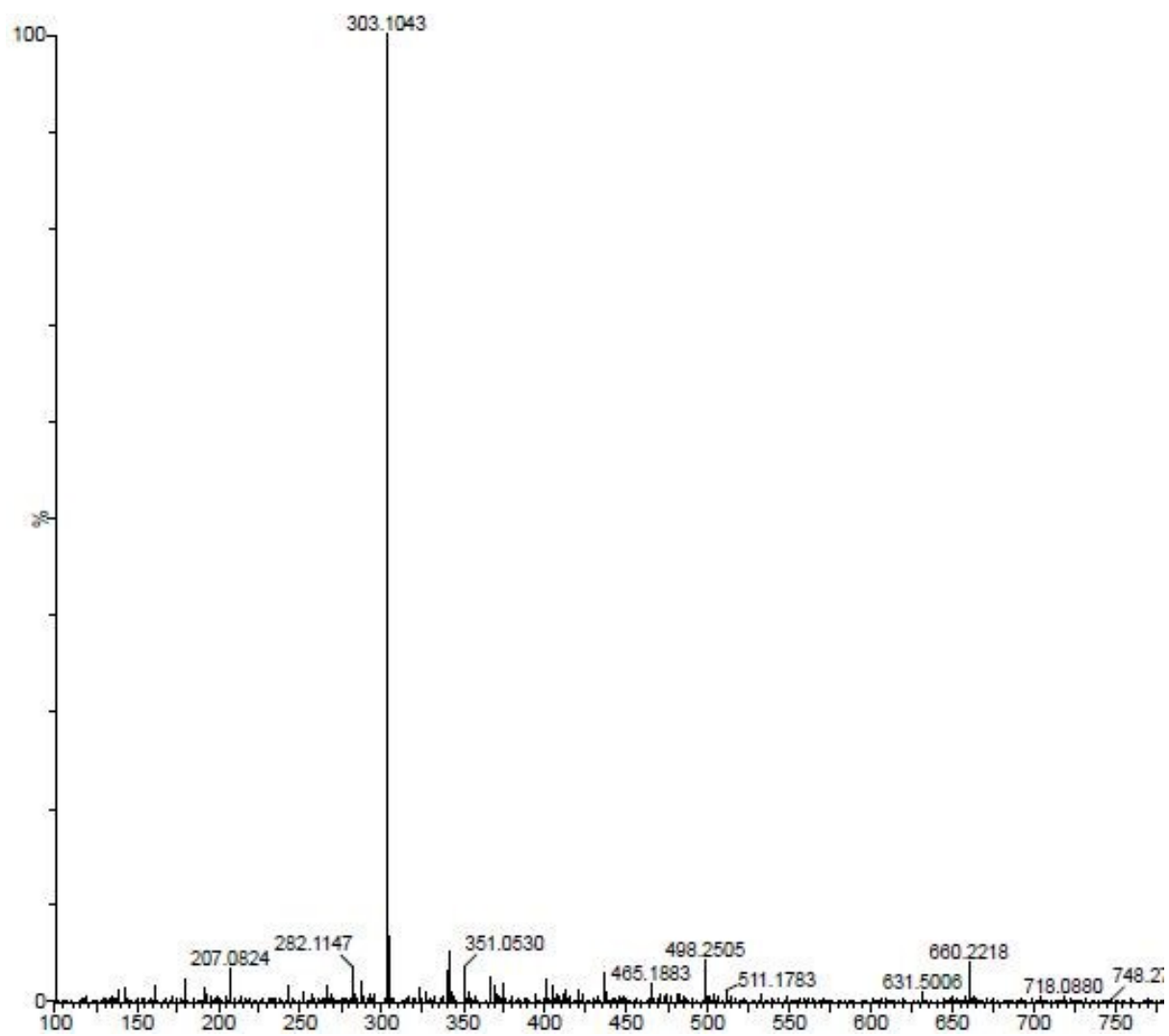


Figure S7. ESI<sup>-</sup> spectral data for HMGluc.



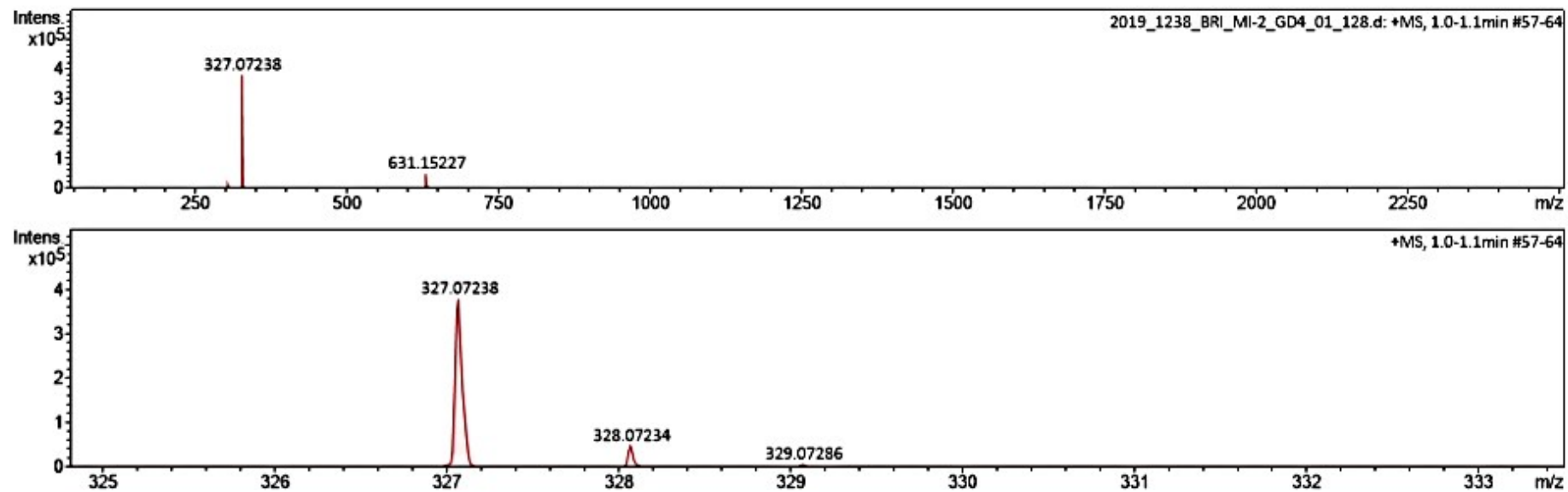
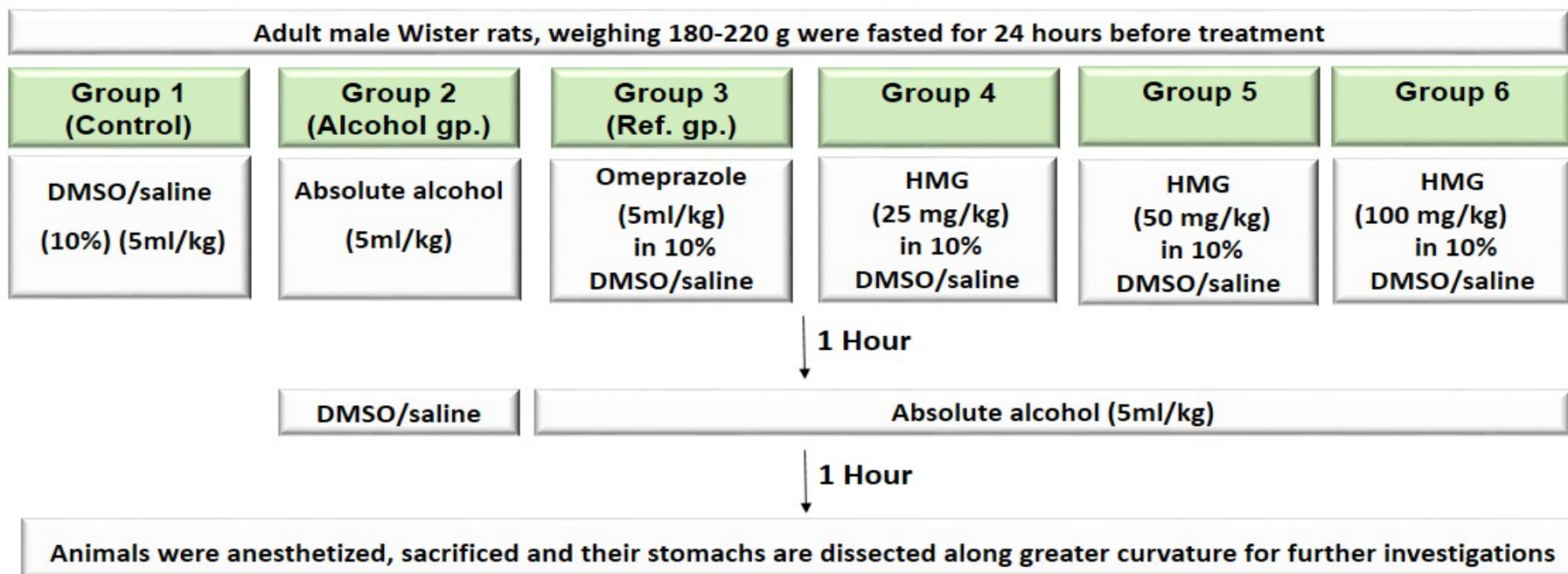
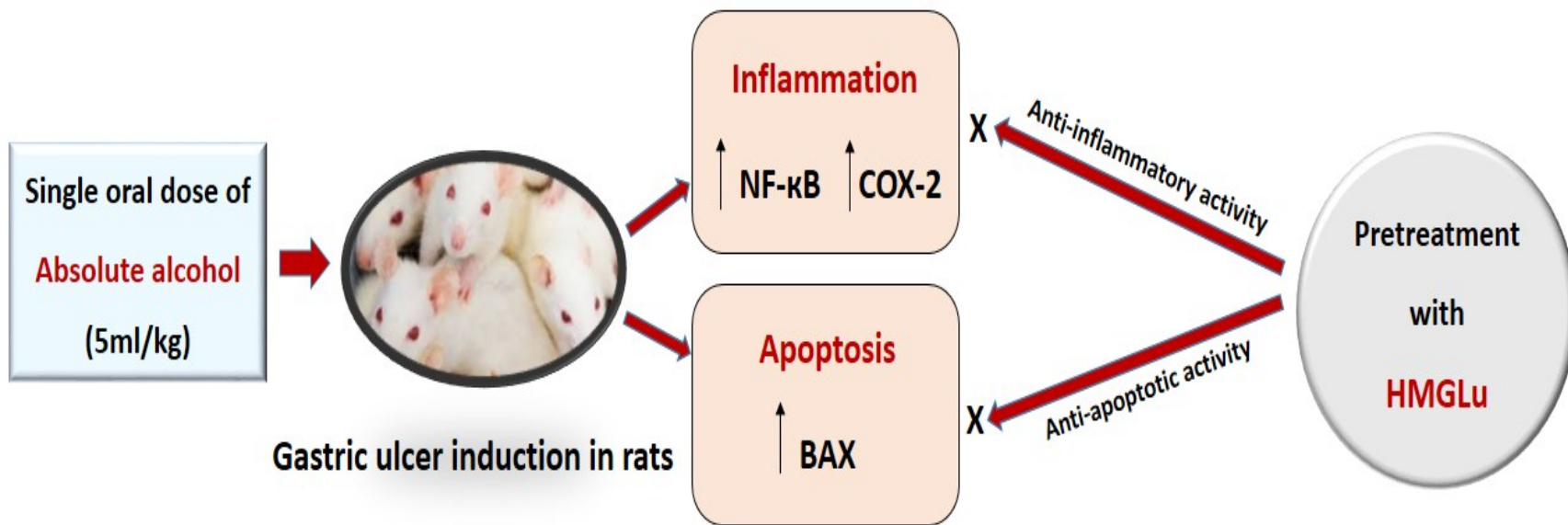


Figure S8. HR-ESI<sup>+</sup> for HMGluc.



**Figure S9.** Experimental scheme of *in vivo* assessment of the gastroprotective activity of HMGLu.



**Figure S10.** Mechanism diagram of the *in vivo* gastroprotective activity of HMGLu.