

Valderes
Amostra:
Solicitação N. G0429_6
07.05.08 UFPE

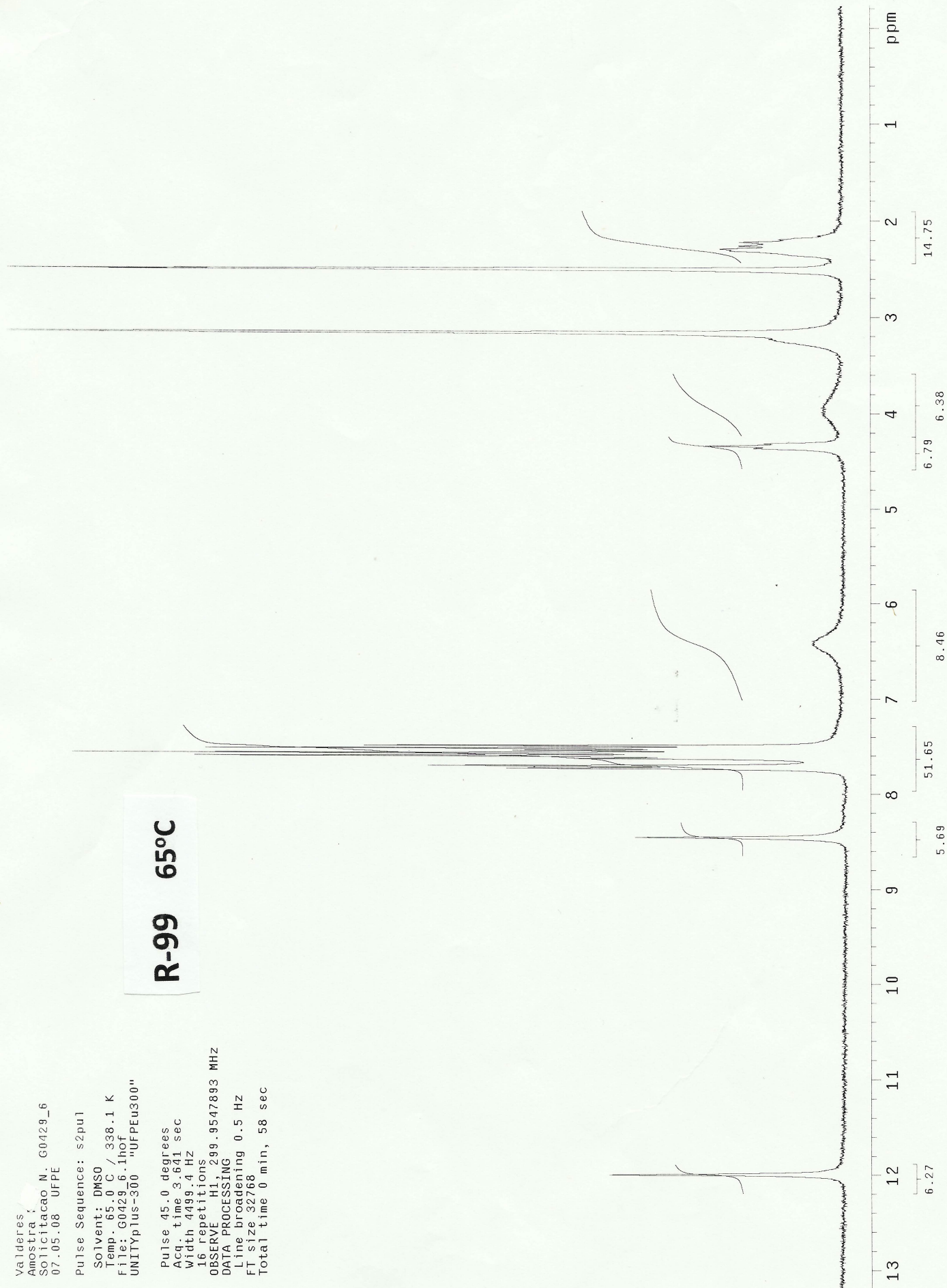
Pulse Sequence: s2pul

Solvent: DMSO
Temp. 65.0 C / 338.1 K
File: G0429_6.1hof
UNITYplus-300 "UFPEU300"

Pulse 45.0 degrees
Acq. time 3.641 sec
Width 4499.4 Hz
16 repetitions

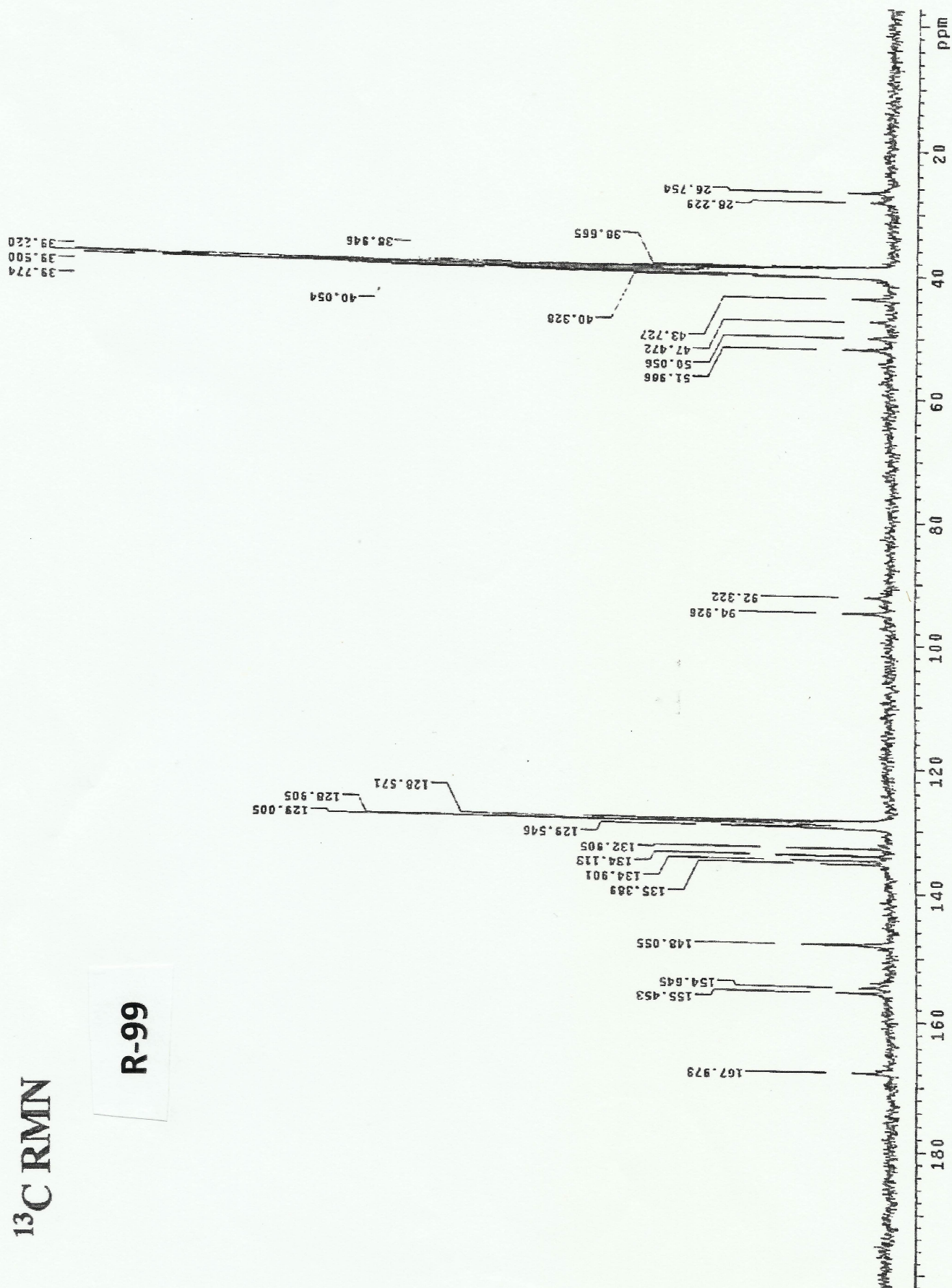
OBSERVE H1, 299.9547893 MHZ
DATA PROCESSING
Line broadening 0.5 Hz
FT size 32768
Total time 0 min, 58 sec

R-99 65°C

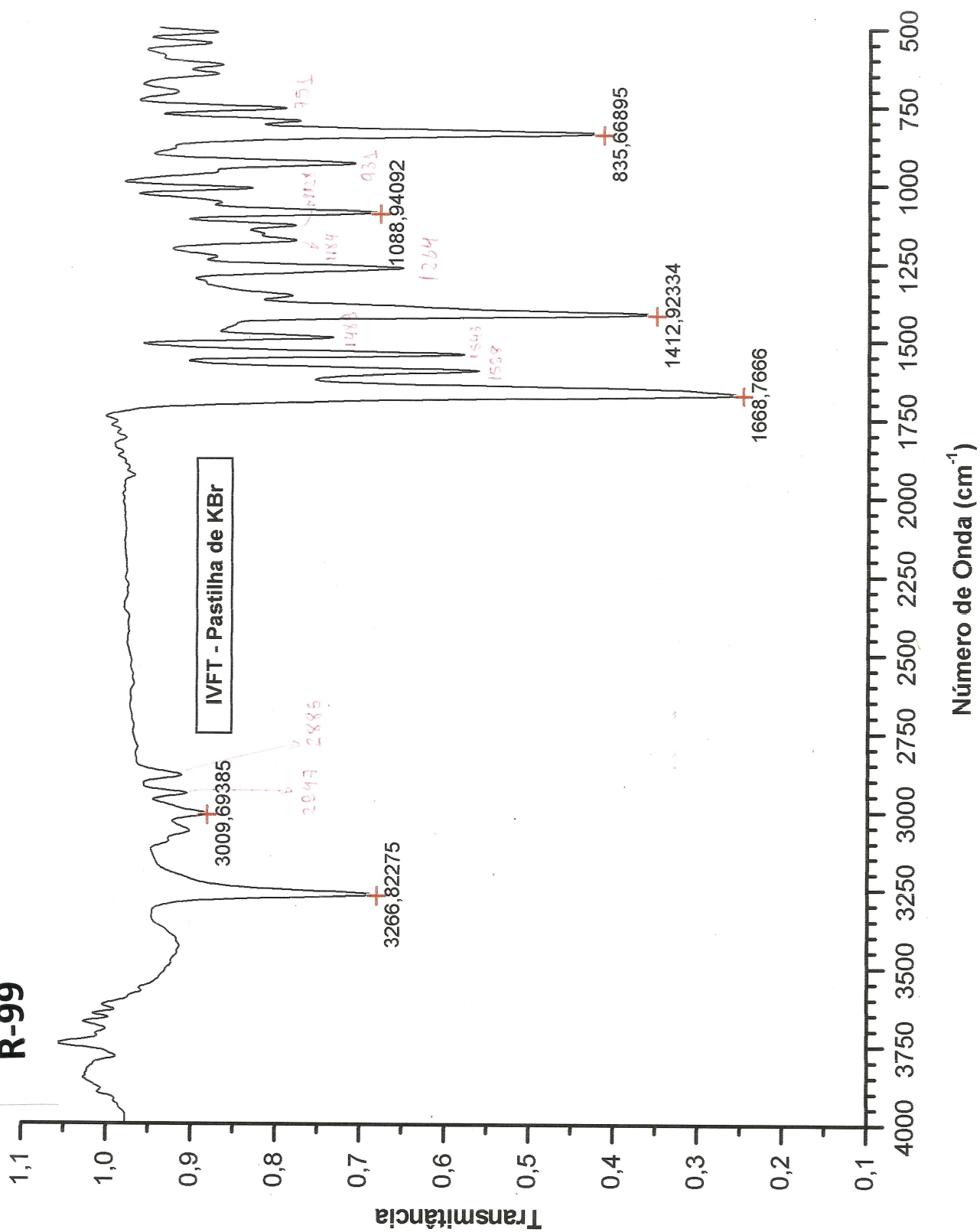


^{13}C RMN

R-99

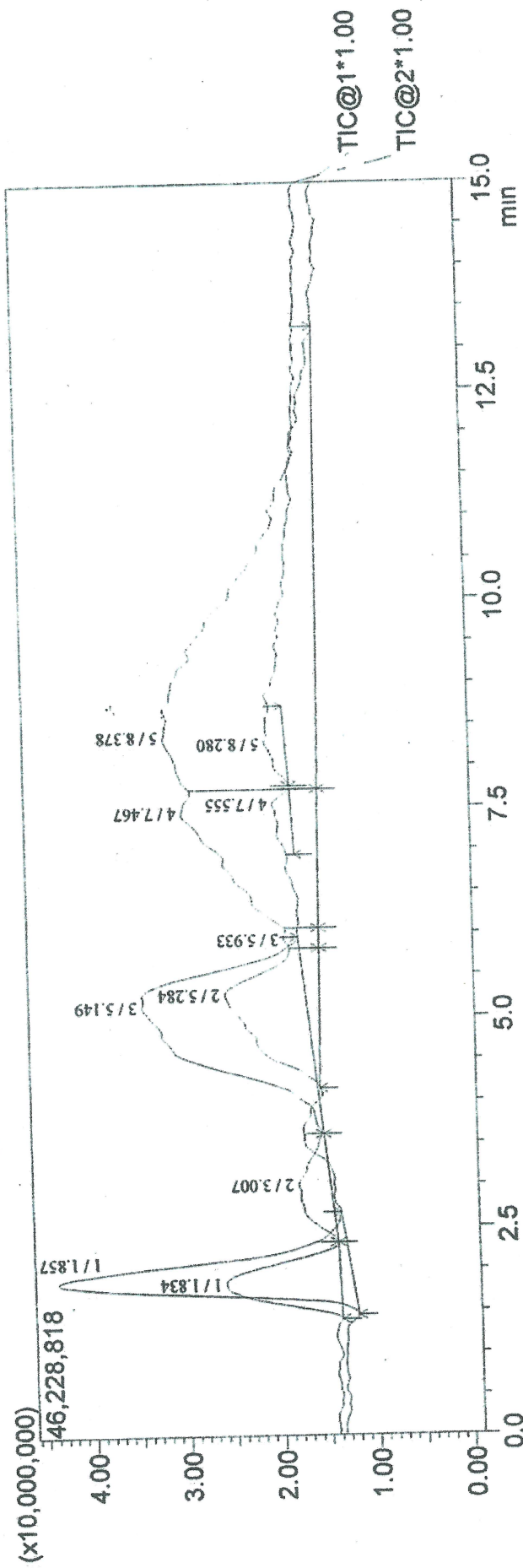


R-99



CROMATOGRAMA DE IONS

MS Chromatogram
R-99 C:\LabSolutions\Data\Central analitica\Data File\H1218-4.lcd



ESPECTRO DE MASSAS R-99

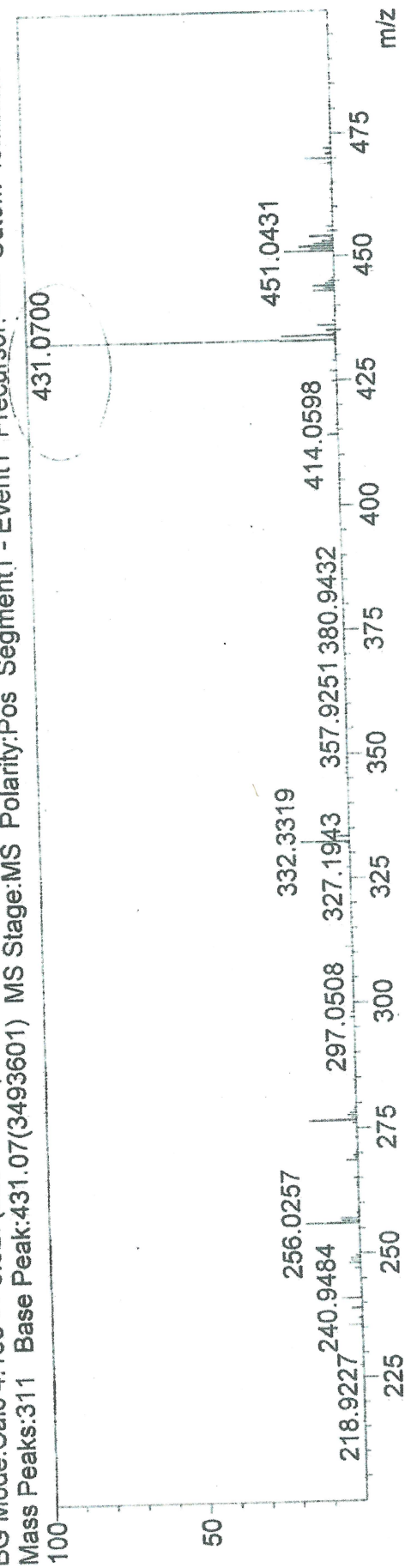
MS Spectrum Graph

R-99

Peak#:2 Ret.Time:Averaged 5.267-5.293(Scan#:791-795)

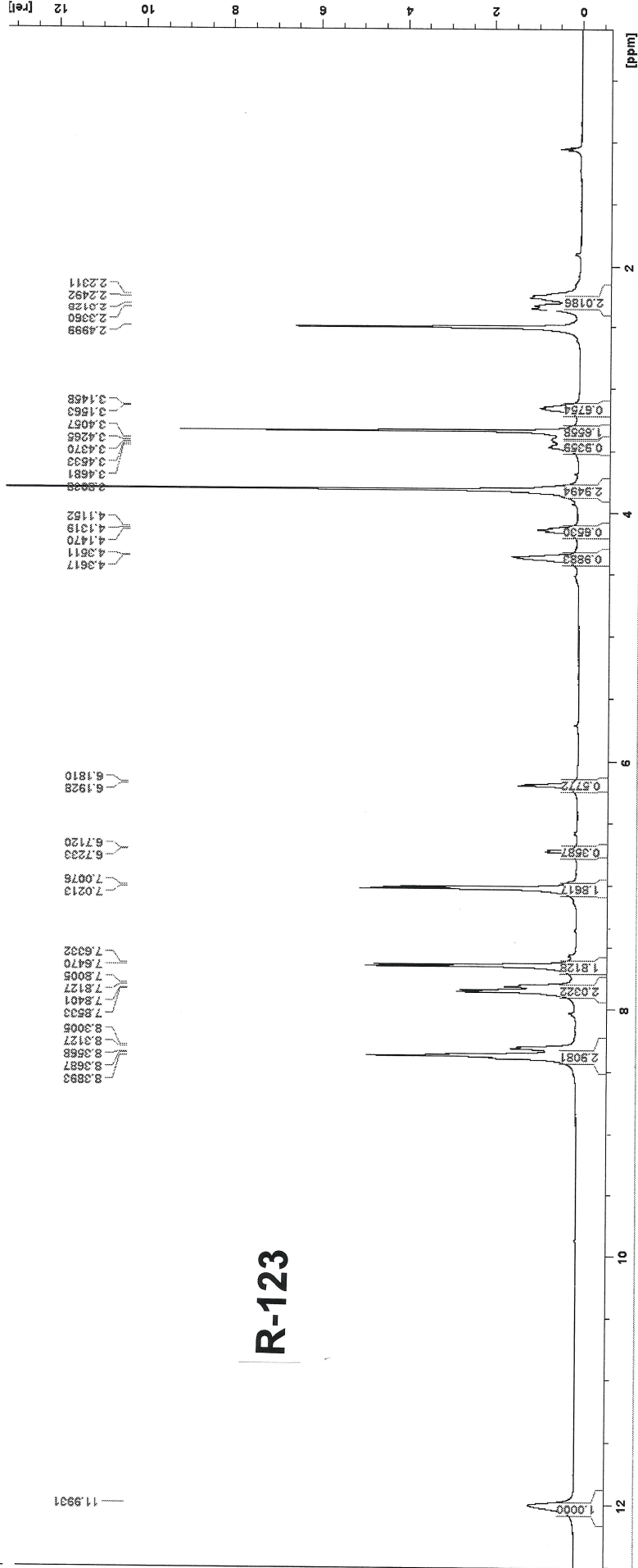
BG Mode:Calc 4.160<->5.827(625<->875)

Mass Peaks:311 Base Peak:431.07(3493601) MS Stage:MS Polarity:Pos Segment1 - Event1 Precursor:----- Cutoff: Ionization Mo



General

DATE = 2019/07/05
TIME = 14:18
INSTRUM = spect
PULPROG = zg30
F1 (1H)
SI = 65536
SF = 600.09
SWH = 12019.231

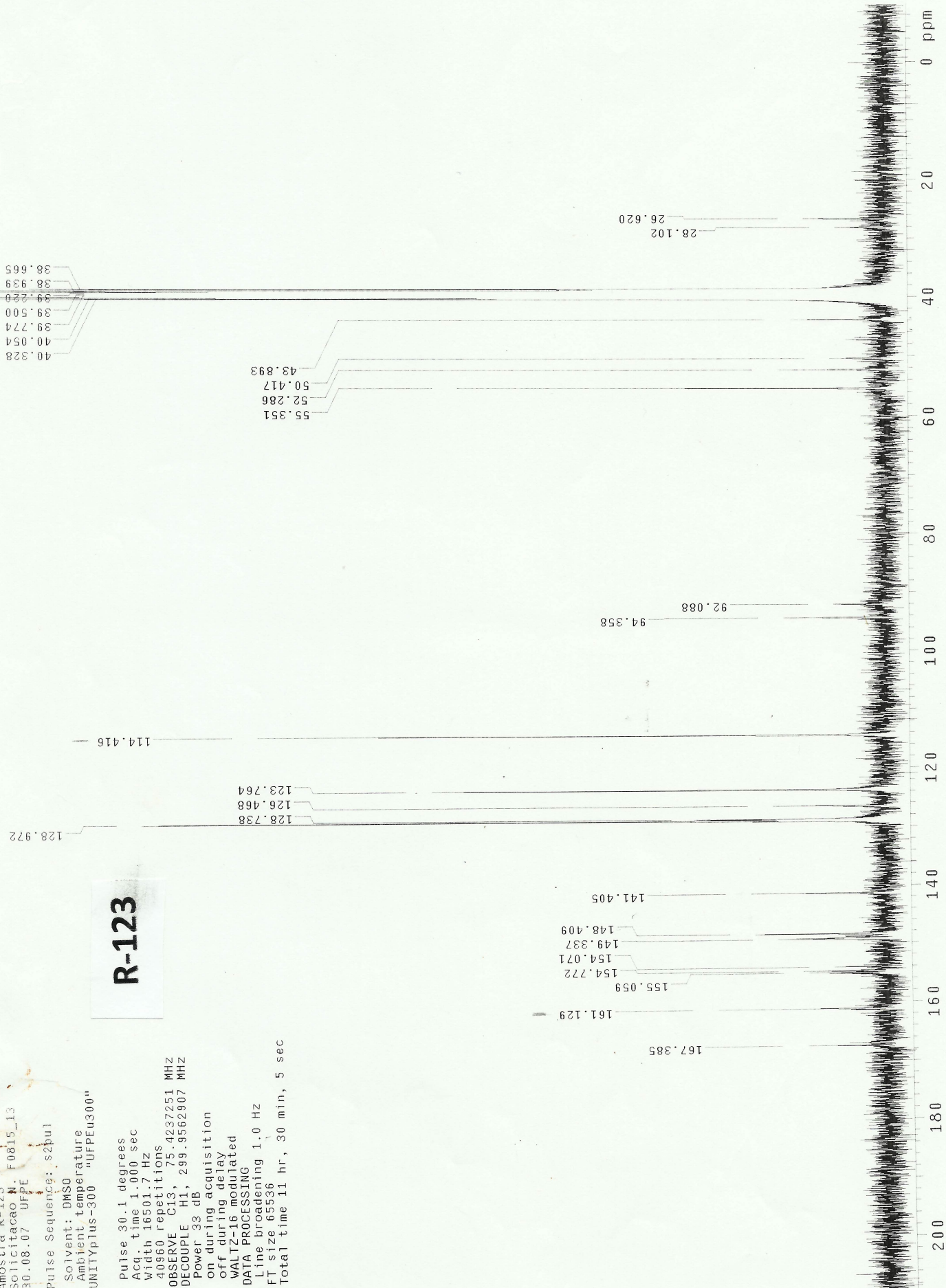


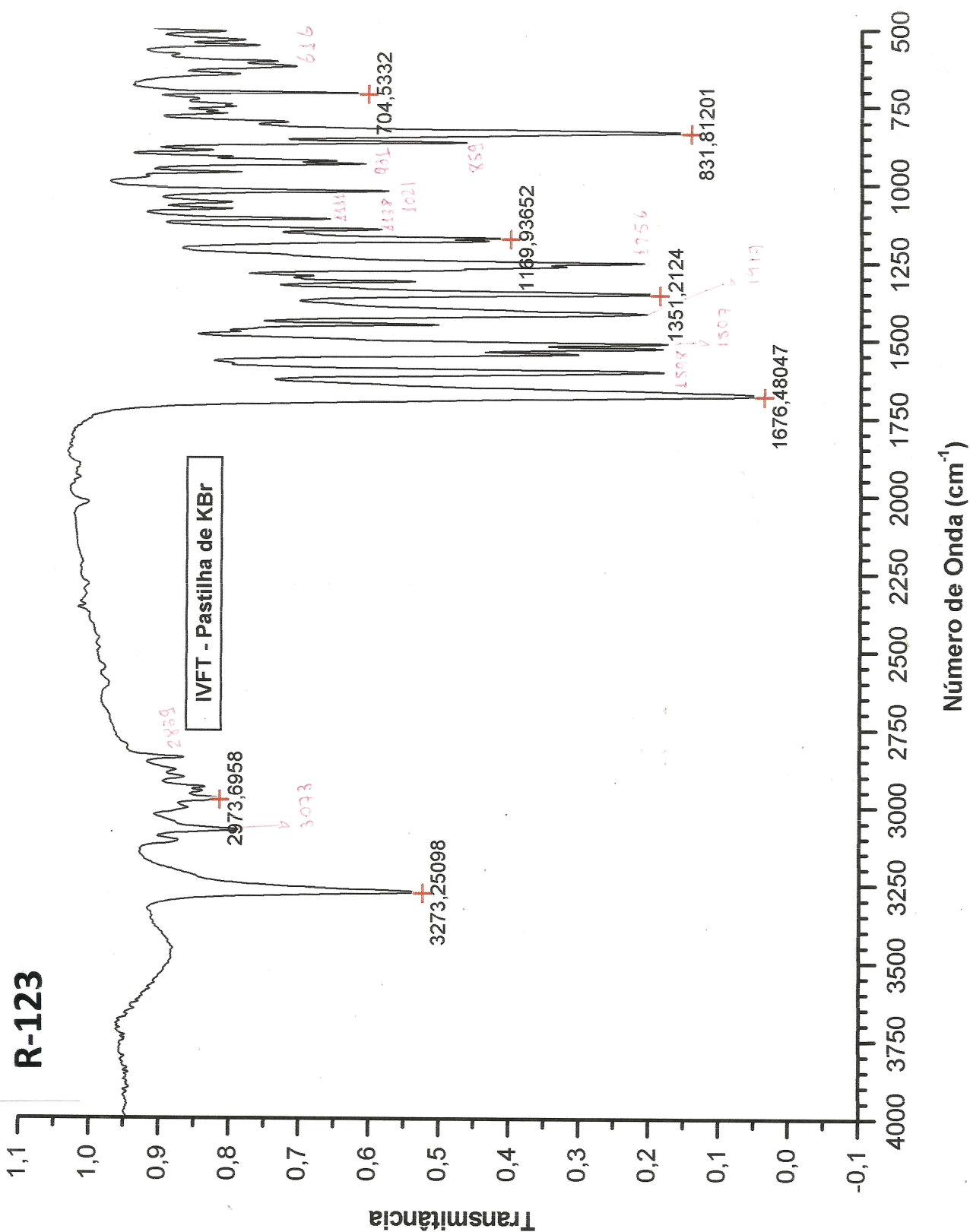
R-123

Valderez
 Amostra R-123
 Sollicitacao N. F0815_13
 30.08.07 UFPE
 Pulse Sequence: s2pul
 Solvent: DMSO
 Ambient temperature
 UNITYplus-300 "UFPEu300"

R-123

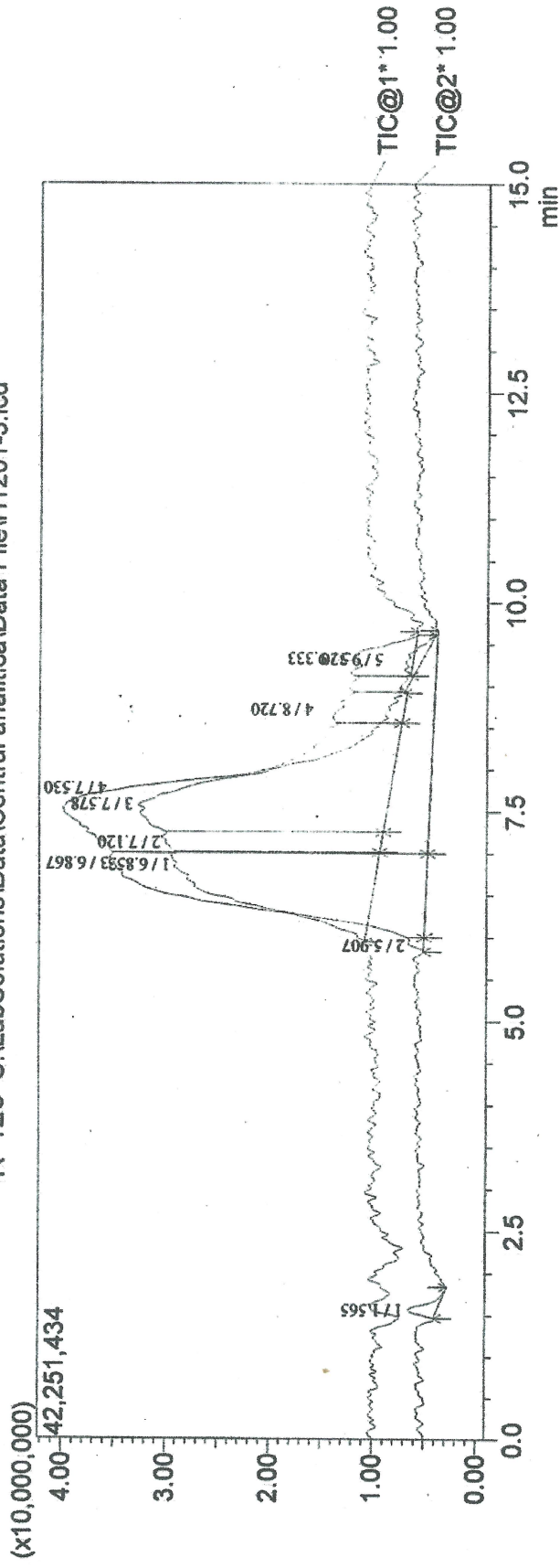
Pulse 30.1 degrees
 Acq. time 1.000 sec
 Width 16501.7 Hz
 40860 repetitions
 OBSERVE C13, 75.4237251 MHZ
 DECOUPLE H1, 299.9562907 MHZ
 Power 33 dB
 on during acquisition
 off during delay
 WALTZ-16 modulated
 DATA PROCESSING
 Line broadening 1.0 Hz
 FT size 65536
 Total time 11 hr, 30 min, 5 sec





CROMATOGRAMA DE IONES

MS Chromatogram
R-123 C:\LabSolutions\Data\Central analitica\Data File\H1201-3.lcd



ESPECTRO DE MASSAS R-123

R-123

MS Spectrum Graph

Peak#:1 Ret.Time:Averaged 6.840-6.867(Scan#:1027-1031)

BG Mode:Calc 5.947<->7.013(893<->1053)

Mass Peaks:266 Base Peak:438.15(7528841) MS Stage:MS Polarity:Pos Segment1 - Event1 Precursor:----- Cutoff: Ionization Mo

