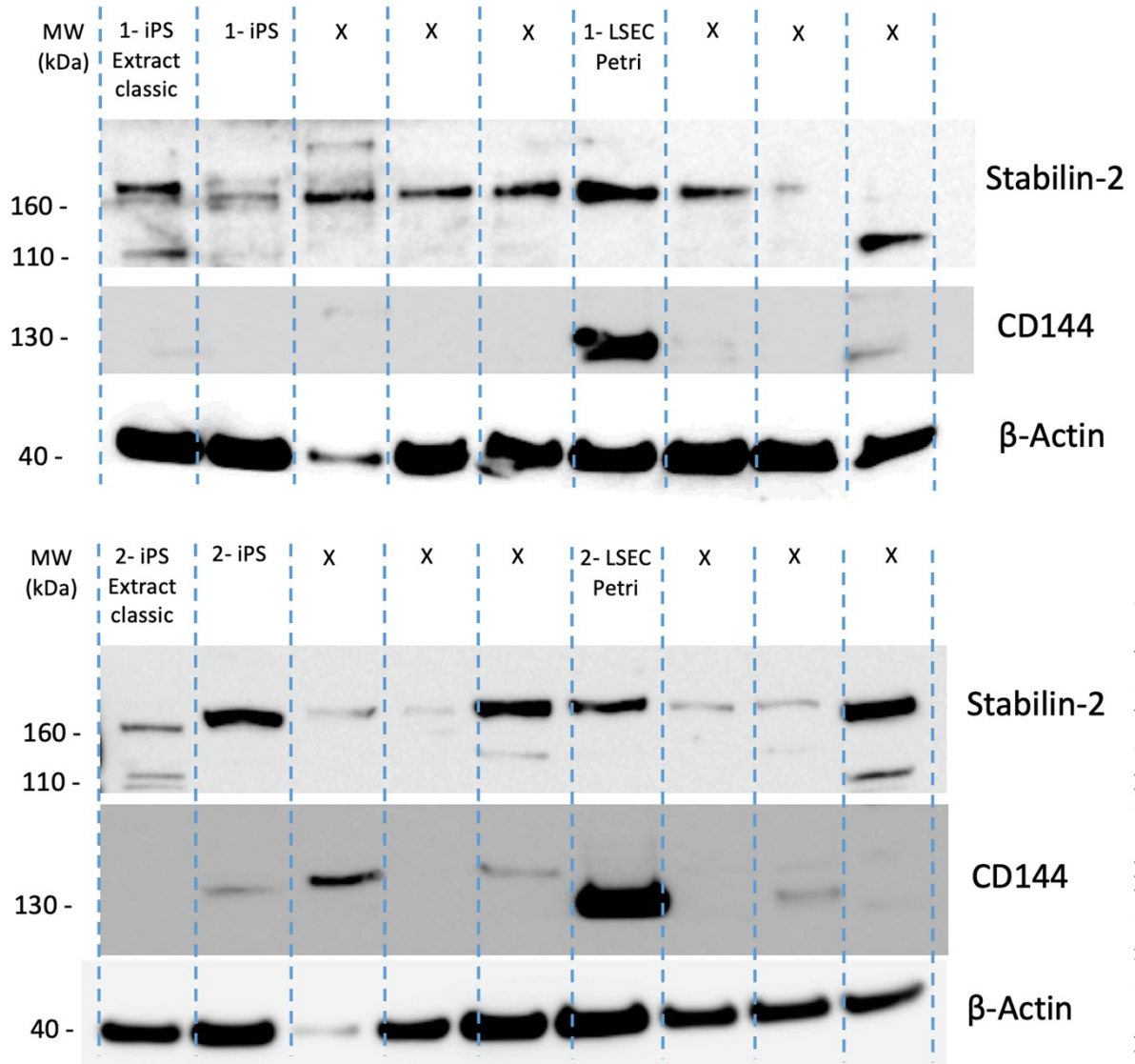
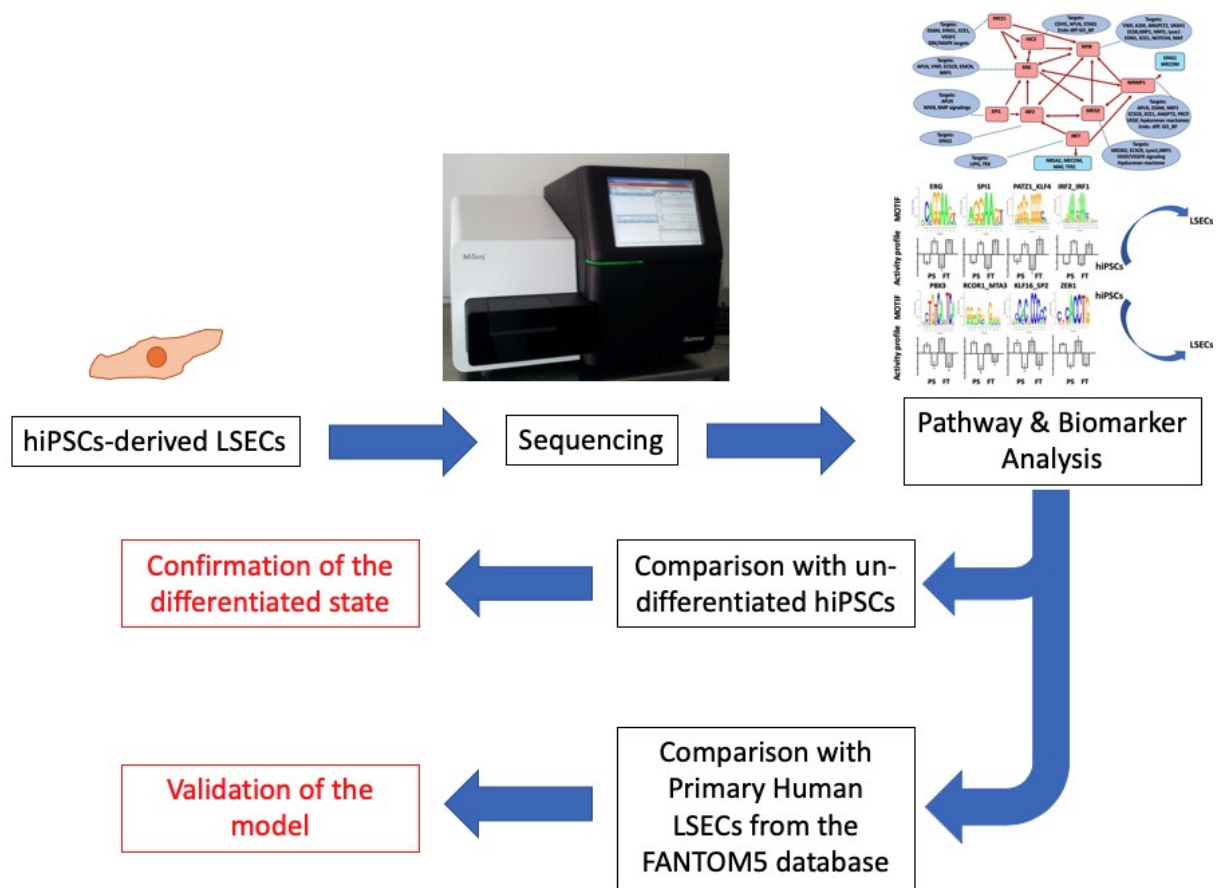


**Supplementary file 1:**

<b>Marker</b>	<b>Gene</b>	<b>Forward Sequence</b>	<b>Reverse Sequence</b>
Stabilin-2	STAB2	CCTGTGAAACCTGTGCTGAC	CCATCGCCATCTAGTCCACTG
PECAM-1	CD31	GCAACACAGTCCAGAT	GACCTCAAAGTGGGCA
VE-Cadherin	CD144	CCGCAATAGACAAGGA	AGGGTAAAGTTGTTCT
Beta Actin	BACT	TTGCCAATGGTGATGA	CCTCATGAAGATCCTC



First and second duplicate of total protein extract from hiPSs and hiPSCs-derived LSECs analyzed with Western Blots for Stabilin 2, CD144 and Beta-Actin. Samples named X are currently used for another research project. The sample named iPS Extract classic, corresponds to a different extraction method in which the total protein were directly extracted from the cell lysate (20 mM HEPES pH 7.4, 142 mM KCl, 5 mM MgCl<sub>2</sub>, 1 mM EDTA, 5% glycerol, 1% NP40 and 0.1% SDS) supplemented with freshly added protease and phosphatase inhibitors.



Methodology of the transcriptomic analysis performed in the current work.