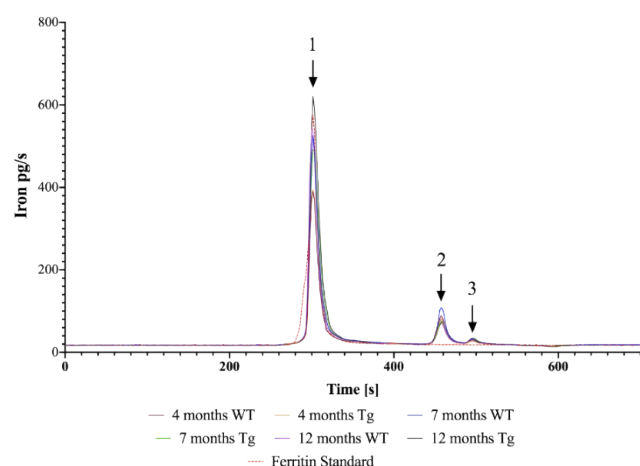
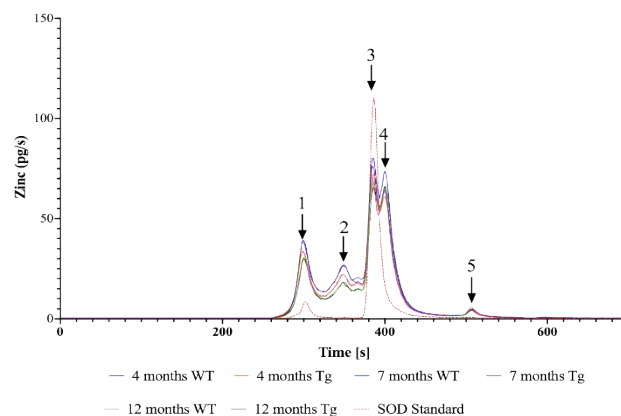


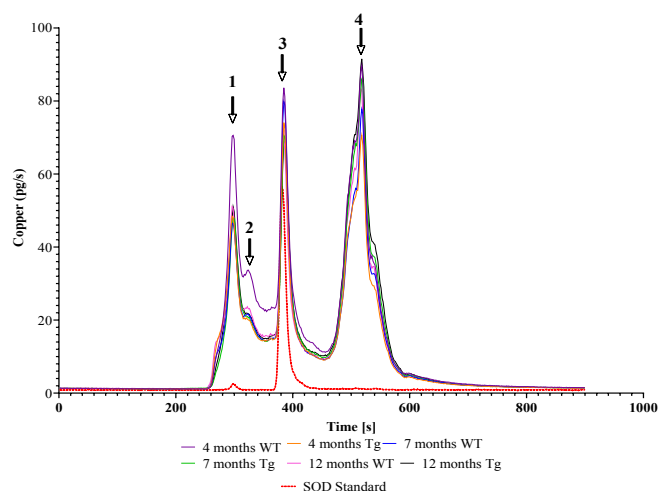
## Supplementary Figures



**Fig S1:** SEC-ICP-MS chromatogram of iron bound to metalloproteins rTg4510 and WT mice. The iron content within each peak was averaged for each group to generate the chromatogram. SEC-ICP-MS analysis revealed 3 peaks associated with iron-protein complexes. Tg=rTg4510; n=4-6/group.



**Fig S3:** SEC-ICP-MS chromatogram of zinc bound to metalloproteins in whole tissue of rTg4510 and WT mice. The zinc content within each peak was averaged for each group to generate the chromatogram. SEC-ICP-MS trace revealed 5 peaks. Tg=rTg4510; n=4-6/group



**Fig S2:** SEC-ICP-MS chromatogram of copper bound to metalloproteins in whole tissue of rTg4510 and WT mice. The copper content within each peak was averaged for each group to generate the chromatogram. SEC-ICP-MS trace revealed 4 peaks. Tg=rTg4510; n=4-6/group SEC-ICP-MS trace revealed 4 peaks. Tg=rTg4510; n=4-6/group