

Electronic Supplementary Information

**Gold Nanoparticle Intercalated Mesoporous Silica based
Nanozymes for Selective Colorimetric Detection of Dopamine**

Shounak Ray, Rima Biswas, Rumeli Banerjee, and Papu Biswas

Department of Chemistry, Indian Institute of Engineering Science and Technology, Shibpur,
Howrah 711 103, West Bengal, India.

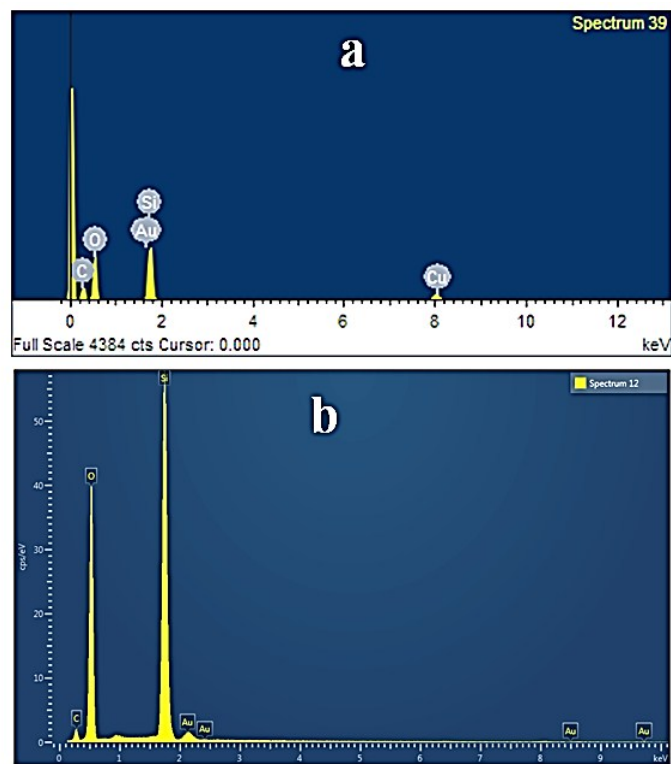


Fig. S1 (a) TEM EDX Analysis and (b) SEM EDX Analysis of AuMS

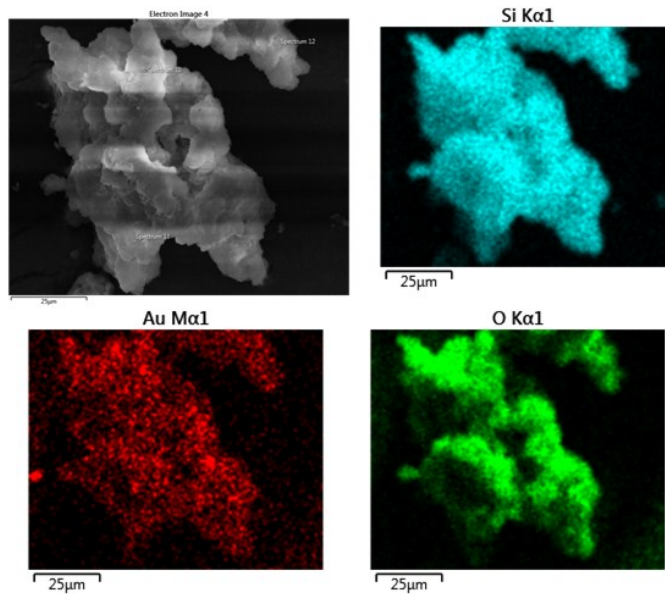


Fig. S2 EDS Mapping of AuMS Catalyst Particles Used to Measure the Dispersion of Au Within the Catalyst

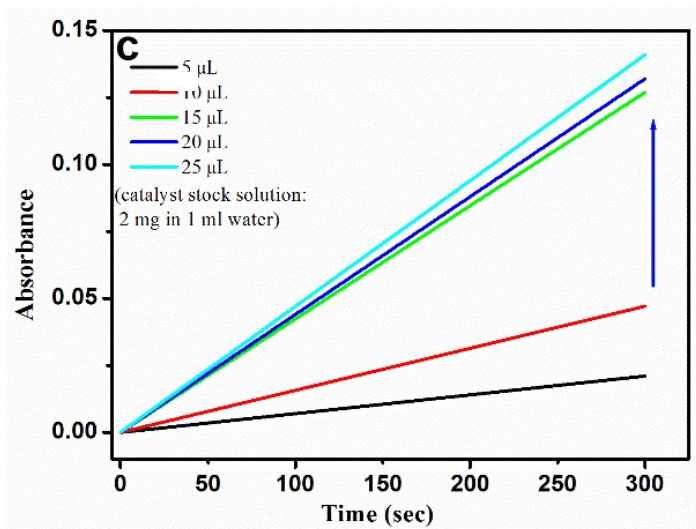


Fig. S3 Optimization of the amount of catalyst on catalytic oxidation of TMB in presence of AuMS