

Supporting Information

A nano-integrated diagnostic and therapeutic platform with oxidation-reduction reactions in tumor microenvironment

Lei Zhao^{†,‡} Guihua Qiu[†] Kai Wang[†] Hu Chen[†] Fengkai Ruan[†] Nan Liu[†] Zifeng Deng[†]
Youliang Yao[†] Dongbei Guo[†] Dai Wang[†] Li Sha[‡] Xiangyu Kong[‡] Wenzhi Liu[‡] and
Yongxing Zhang[†]

[†]State Key Laboratory of Molecular Vaccinology and Molecular Diagnostics, School
of Public Health, Xiamen University, Xiamen, Fujian, 361102, PR China.

[‡]Affiliated Zhongshan Hospital of Dalian University, Dalian, Liaoning, 116001, PR
China.

[†]Email: z63y94x@xmu.edu.cn

[‡]Email: liuwenzhi196507@163.com

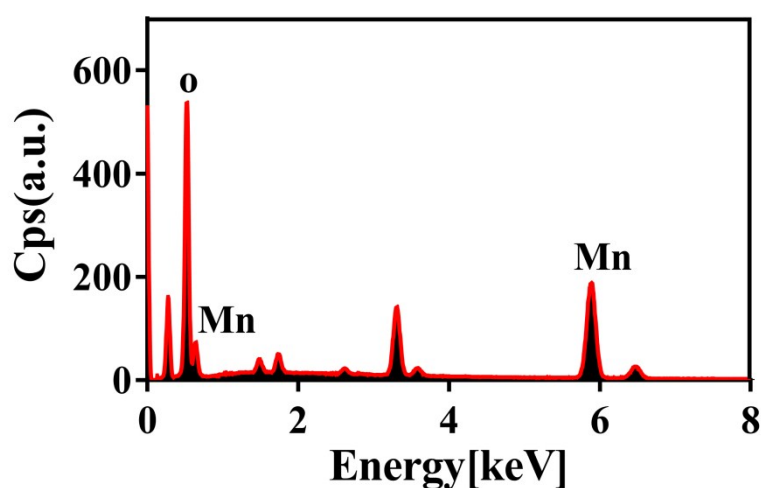


Figure S1. EDS pattern of MnO₂

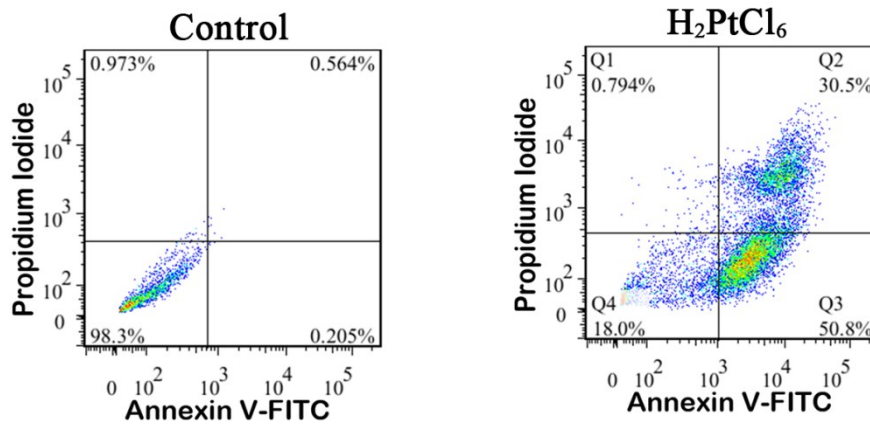


Figure S2. Flow cytometry to detect apoptotic induction of H₂PtCl₆ (20 μg/mL)

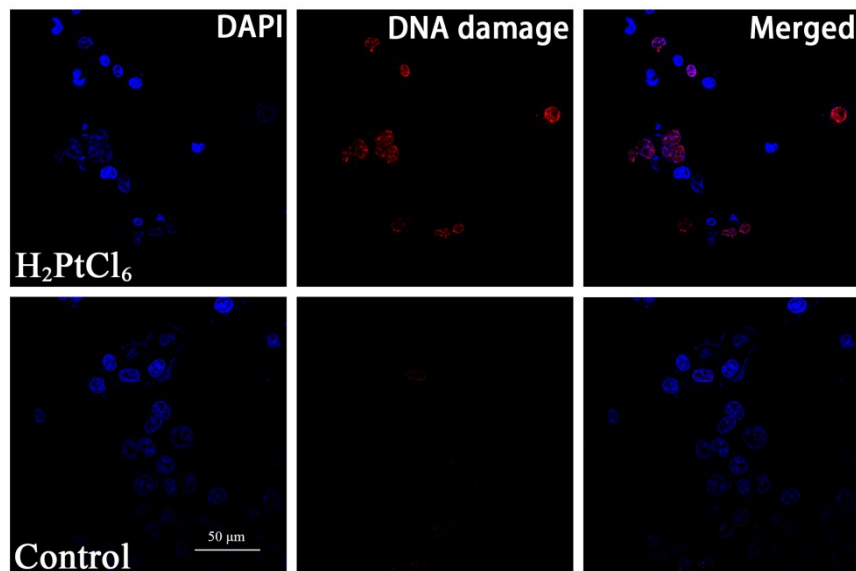


Figure S3. Immunofluorescence staining of γ -H2AX foci in HCT-116 cells treated with H₂PtCl₆ (20 μg/mL), in which green represents DAPI, and red represents Cy3 labeled double-strand breaks in DNA. Scale bar: 50 μm

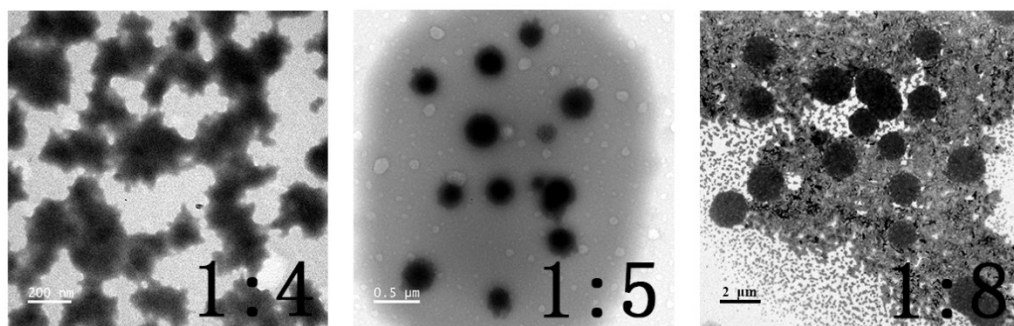


Figure S4. TEM images of HA-H₂PtCl₆ at different ratios of HA/ H₂PtCl₆. The scales are 200, 500, and 2000 nm, respectively

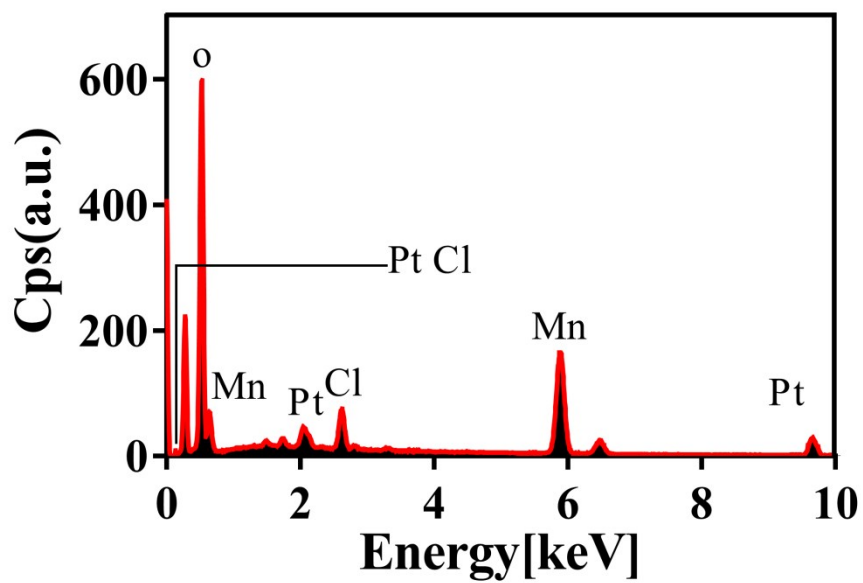


Figure S5. EDS pattern of MHP

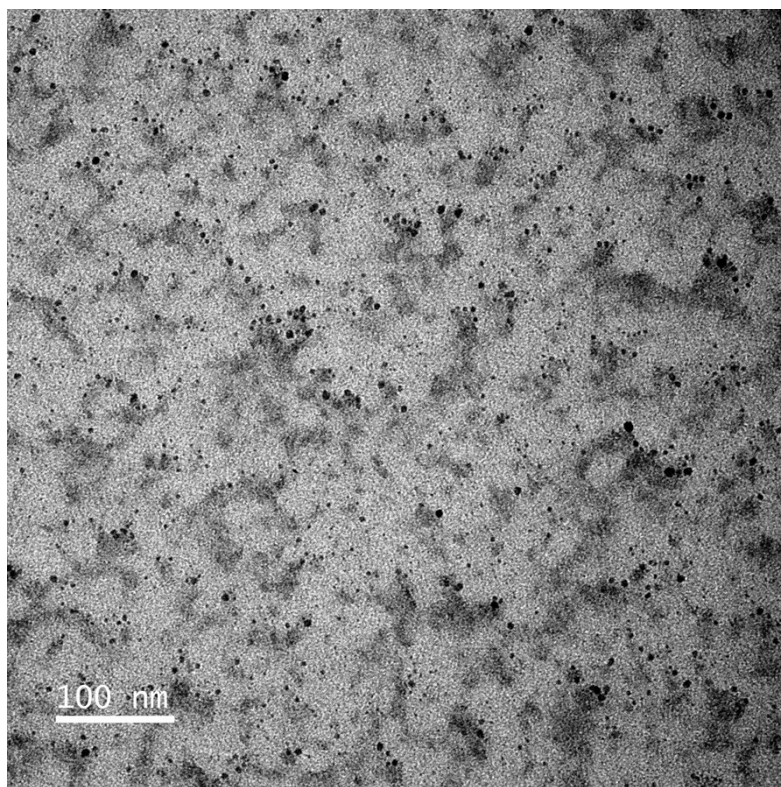


Figure S6. TEM images of MHP after incubation in saline at $\text{H}_2\text{O}_2=100 \mu\text{M}$ / $\text{pH}=6.5$ overnight. Scale bar: 100

nm