

Electronic supporting Information for

Fabrication of glucose-responsive and biodegradable copolymer membrane for controlled release of insulin at physiological pH

Yi Shen, Zhangting Xu, Lulin Li, Weizhong Yuan*, Ming Luo* and Xiaoyun Xie*

Department of geriatrics, Tongji Hospital, Shanghai Tenth People's Hospital, School of
Materials Science and Engineering, Tongji University, Shanghai 201804, P. R. China.

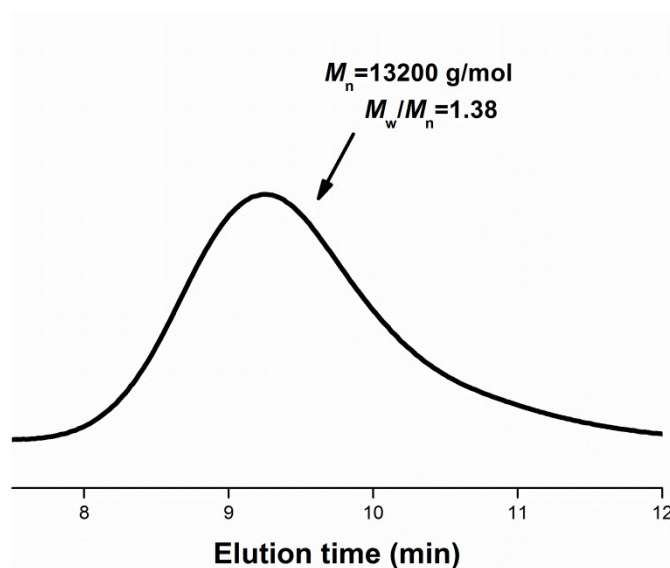


Fig. S1 GPC of the copolymer after the reaction with glucose molecules.

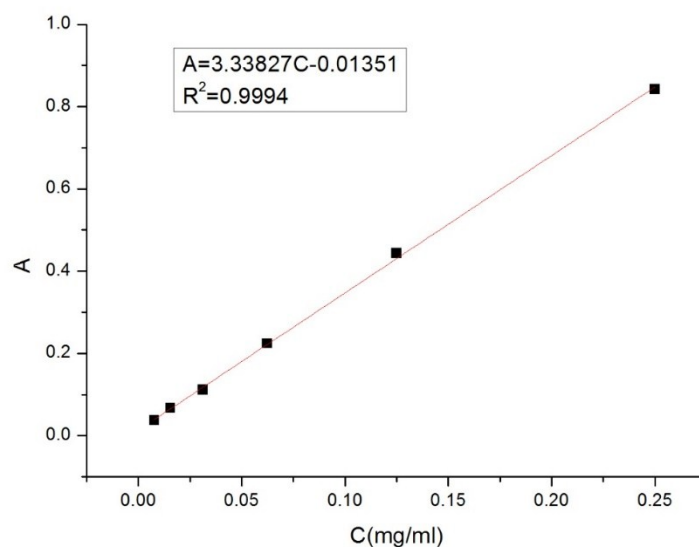


Fig. S2 The standard concentration-UV absorption relationship curve of insulin.

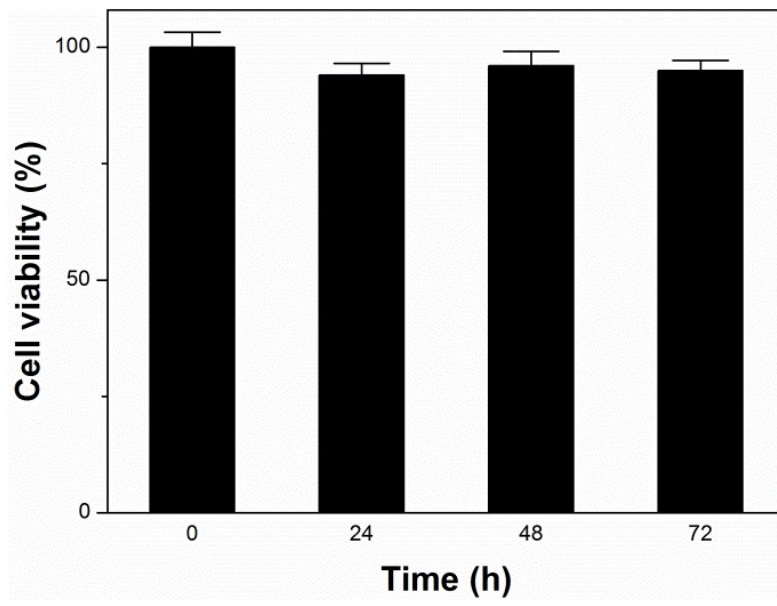


Fig. S3 Cell viability after incubation with the copolymer membranes.