

Supporting Information

SI 1 the relationship between the optical properties of Eu^{3+} ions and the structure of host

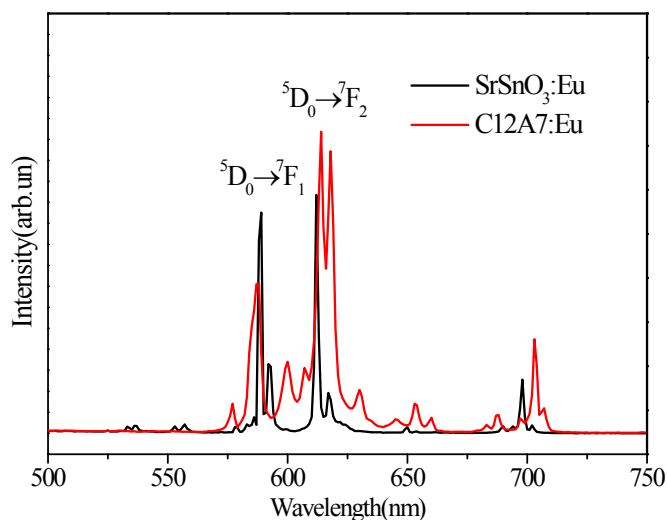


Figure S1. Emission spectrum of $\text{C12A7}:\text{Eu}$ and $\text{SrSnO}_3:\text{Eu}$

SI 2 the relationship between the luminescence properties Eu^{3+} ions and the pore structure

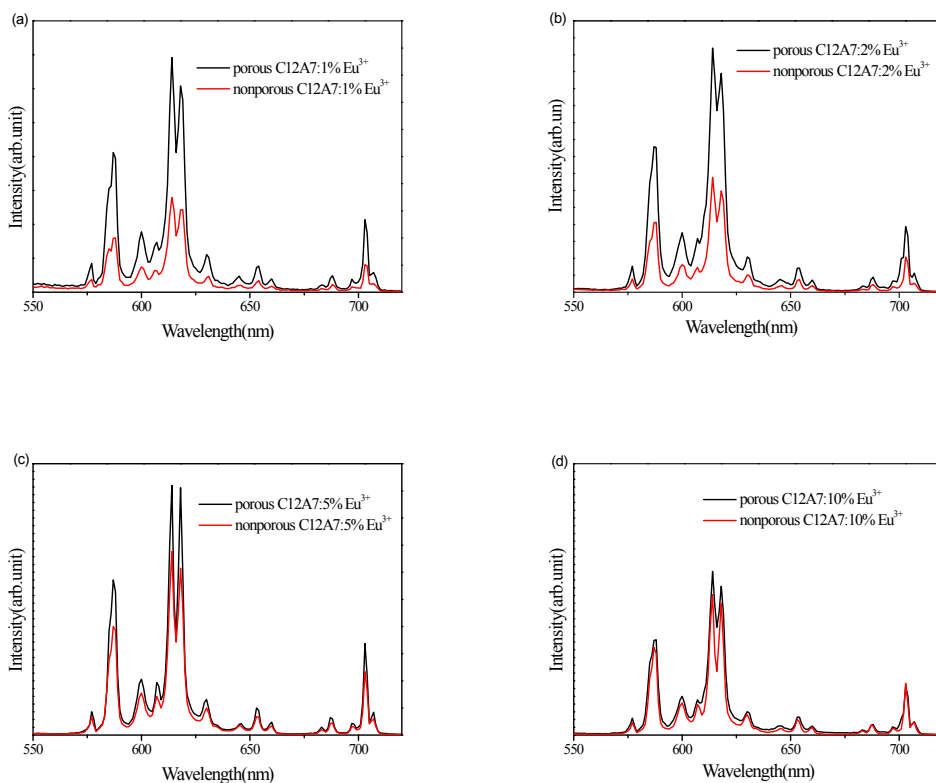


Figure S2. Room temperature emission spectra at 391 nm of C12A7 doped with different Eu^{3+} contents with and without pore structure: (a) 1%; (b) 2%; (c) 5%; (d) 10%.