

Fabrication of core-shell CoFe₂O₄@HAp nanoparticles: A novel magnetic platform for biomedical applications

D. Karthickraja^a, S. Karthi^b, G.A. Kumar^{c,d,e}, D.K. Sardar^c, G.C. Dannangoda^f, K.S.

Martirosyan^f, E.K. Girija^{a*}

^a Department of Physics, Periyar University, Salem 636 011, Tamilnadu, India.

^b College of Chemistry and Chemical Engineering, Henan University, Kaifeng 475004, China.

^c Department of Physics and Astronomy, University of Texas at San Antonio, San Antonio, Texas 78249, USA

^d Department of Atomic and Molecular Physics, Manipal University, Manipal 576 104, Karnataka, India.

^e Department of Natural Sciences, Texas Agriculture and Mechanical University, One University Way, San Antonio, TX 78224

^f Department of Physics and Astronomy, University of Texas at Rio Grande Valley, Brownsville, Texas 78520, USA

* Corresponding author. Tel.: +91 9444391733; Fax: +91 427 2345124

E-mail address: girijaeaswaradas@gmail.com (E. K. Girija)

S1

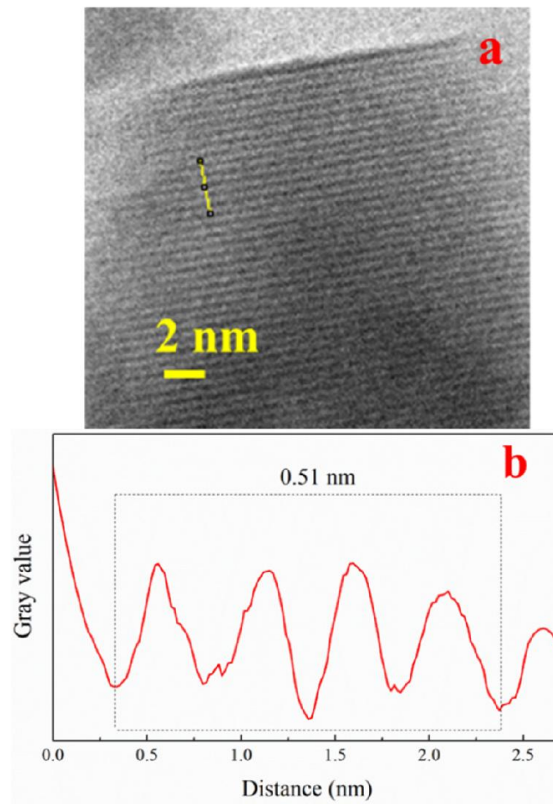


Fig S1. (a) HR-TEM image and (b) line profile map of sample A.

S2

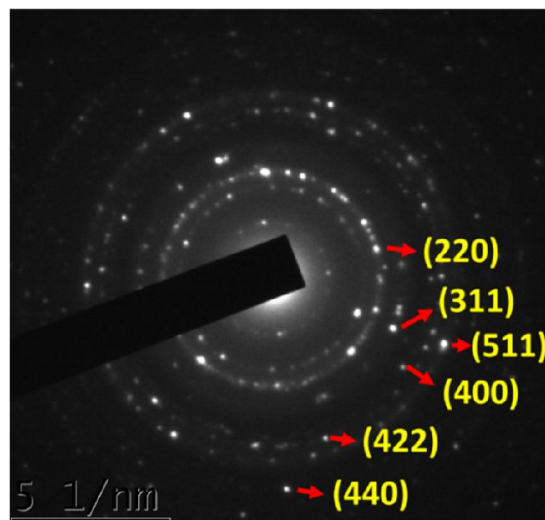


Fig S2. SAED pattern of sample A indexed with corresponding diffraction planes for cobalt ferrite phase.

S3

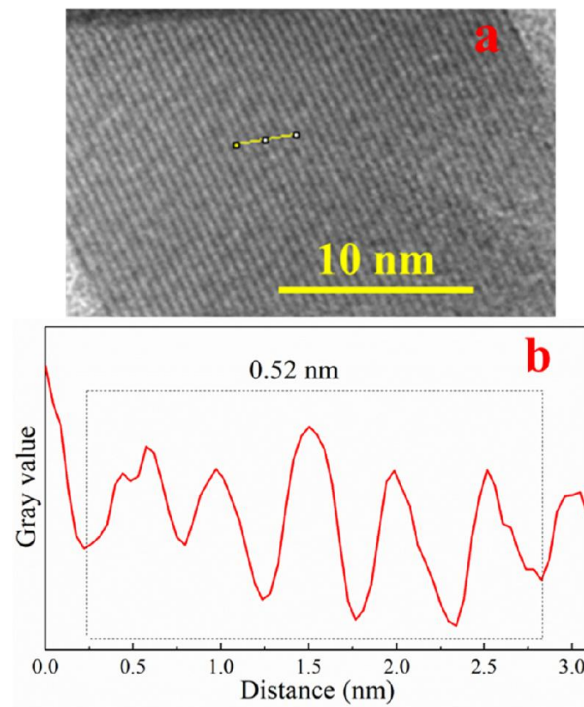


Fig. S3. (a) HRTEM image and (b) line profile map for sample A after heat treatment.

S4

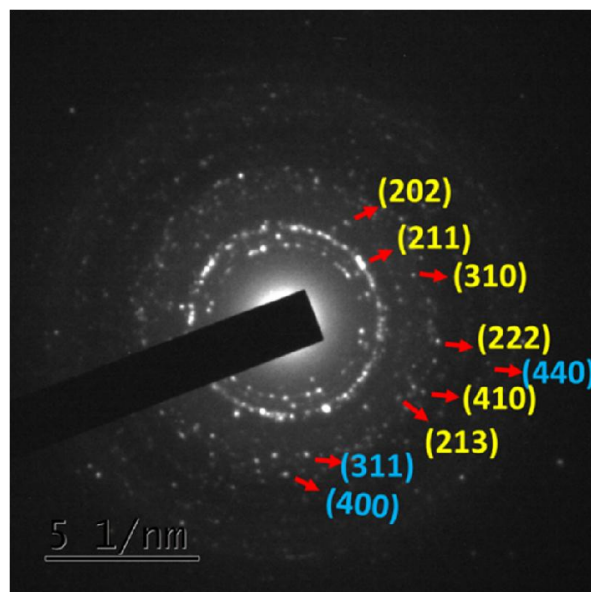


Fig S4. SAED pattern of sample B indexed with corresponding diffraction planes for HAp (yellow color) and cobalt ferrite phases (blue color).

S5

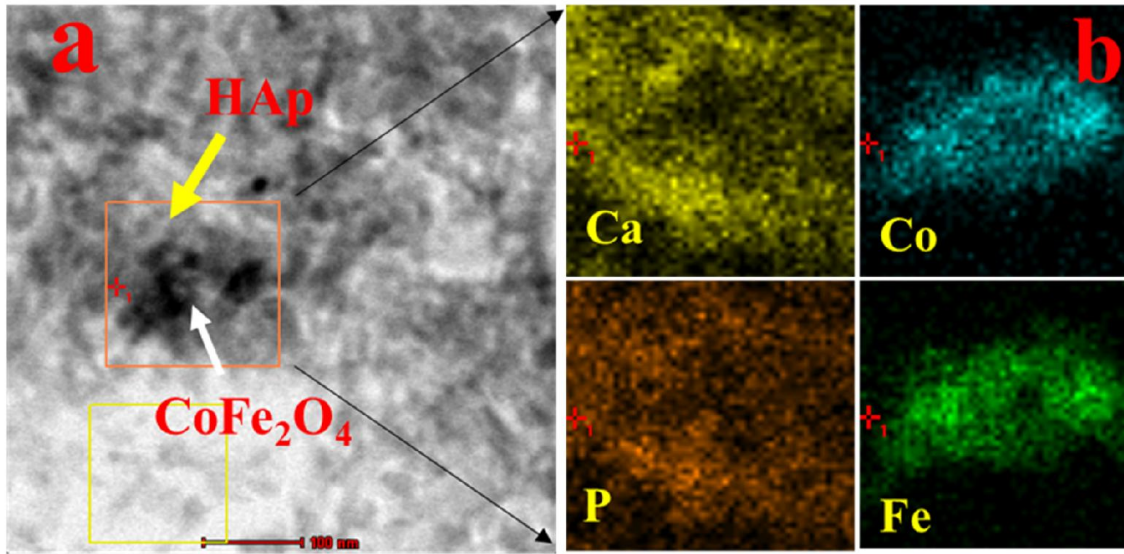


Fig. S5. (a) STEM image and (b) elemental mapping of sample B

Fig S5 (a) and (b) shows the STEM and elemental mapping of sample B. Fig 6 (b) clearly reveals the presence of Ca, P, Co and Fe distribution in sample B. From the elemental mapping study the dark part in fig S5 (a) correspond to cobalt ferrite (marked with white arrow) phase and yellow arrow represent the HAp phase.

S6

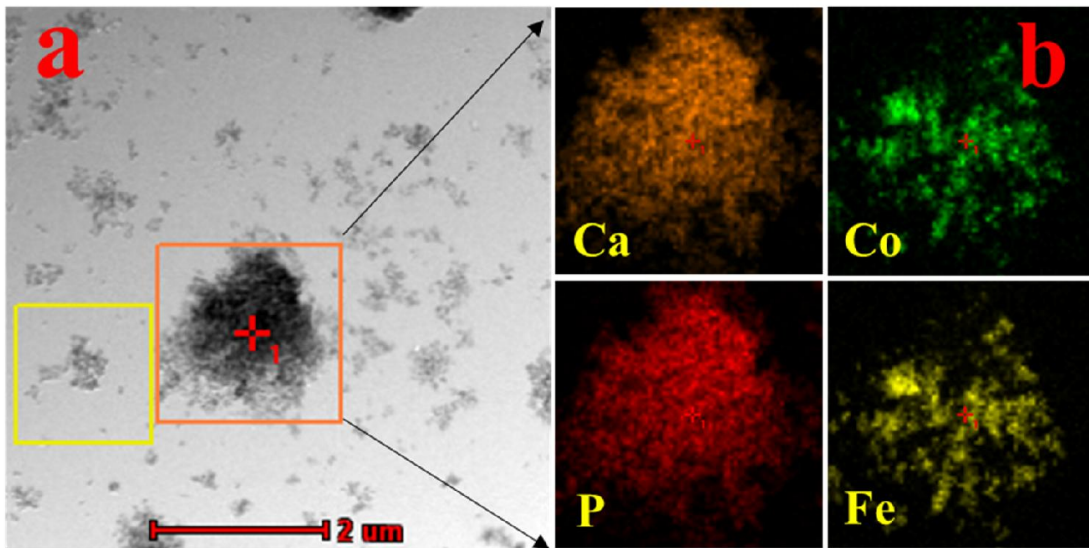


Fig. S6 (a) STEM image and (b) elemental mapping of sample C.

Fig. S6 (a) and (b) shows the STEM image and elemental mapping of sample C. Which clearly indicates the presence of Ca, P, Co and Fe in sample C.