

Electronic Supplementary Material (ESI) for New Journal of Chemistry. This journal is © The Royal Society of Chemistry and the Centre National de la Recherche Scientifique 2019

SUPPORTING INFORMATION

Development and validation of bioanalytical HPLC method for simultaneous estimation of cinnamaldehyde and cinnamic acid in rat plasma: Application for pharmacokinetic studies

Varsha Shetty^a, Bothiraja Chellampillai^b and Ruchika Kaul-Ghanekar^{a*}

(Manuscript ID NJ-ART-06-2019-003183.R1)

➤ Overlay of UV spectra for CNAD and CA

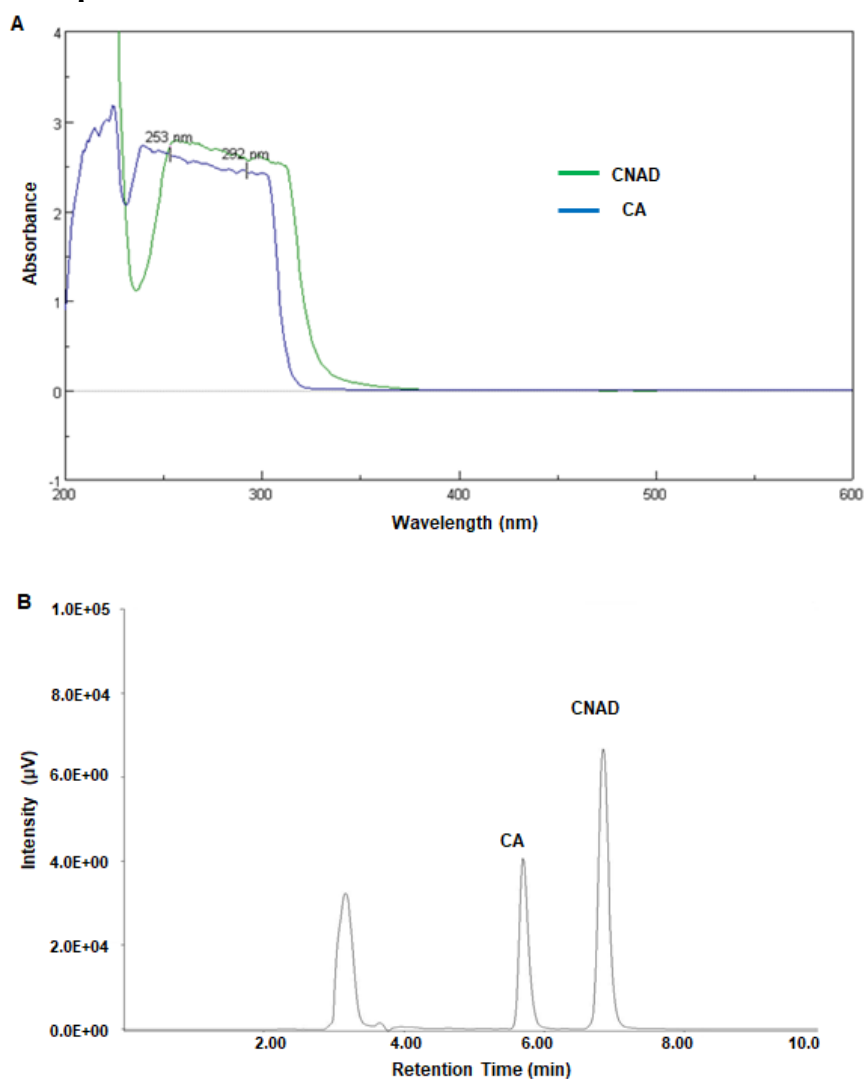


Fig. S1. (A) Overlay of UV spectra for CNAD (Green) and CA (Blue) (B) Representative HPLC chromatograms of rat plasma spiked with 0.01 µg/ml of CNAD and CA for system suitability. Chromatographic separation was achieved on C18 column using methanol: acetonitrile: 2% glacial acetic acid (20:50:30, v/v) as mobile phase at a flow rate of 0.8 ml/min and UV detection at 292 nm.

Studies reporting similar λ_{\max} of CNAD and/ or CA are given below for reference-

1. Yuan J, Bucher JR, Goehl TJ, Dieter MP, Jameson CW. Quantitation of cinnamaldehyde and cinnamic acid in blood by HPLC. *Journal of analytical toxicology*. 1992 Nov 1; 16(6):359-62.
2. Chen Y, Ma Y, Ma W. Pharmacokinetics and bioavailability of cinnamic acid after oral administration of *Ramulus Cinnamomi* in rats. *European journal of drug metabolism and pharmacokinetics*. 2009 Mar 1; 34(1):51-6.
3. Luo JP, Zhang ZS, Tian C, Li XM. Determination of cinnamaldehyde in Guizhi by HPLC. *Zhongguo Zhong yao za zhi= Zhongguo zhongyao zazhi= China journal of Chinese materia medica*. 2000 Sep; 25(9):544-5.
4. Huang HY, Kuo KL, Hsieh YZ. Determination of cinnamaldehyde, cinnamic acid, paeoniflorin, glycyrrhizin and [6]-gingerol in the traditional Chinese medicinal preparation Kuei-chih-tang by cyclodextrin-modified micellar electrokinetic chromatography. *Journal of Chromatography A*. 1997 May 30; 771(1-2):267-74.
5. HUA J, WU C. Determination of cinnamic acid, cinnamaldehyde and paeonol in Guizhifuling capsules by HPLC [J]. *Anhui Medical and Pharmaceutical Journal*. 2006; 1.

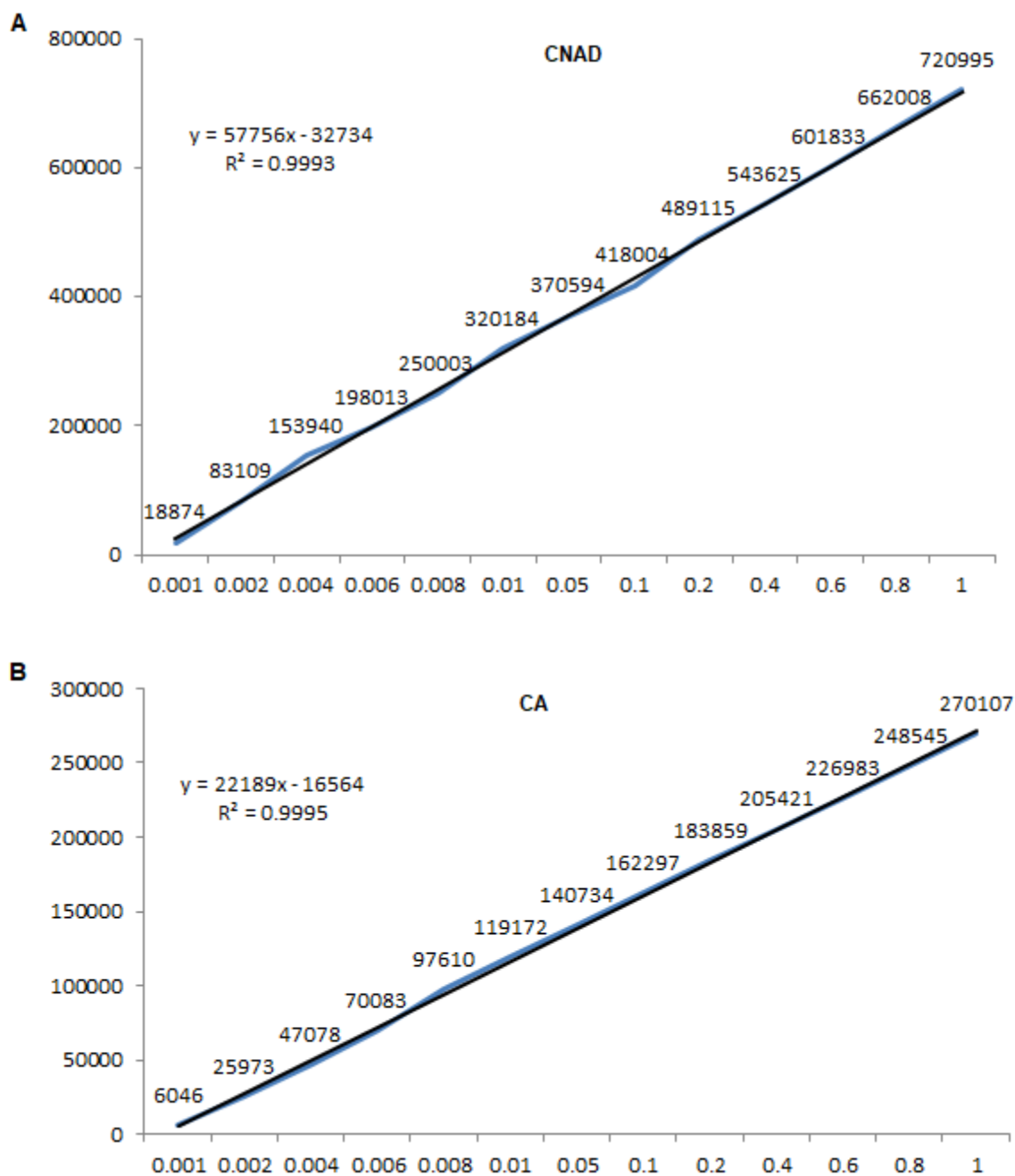


Fig. S2. Representative Linearity Plots for calibration range-0.001-1µg/ml **(A)** CNAD and **(B)** CA spiked plasma samples