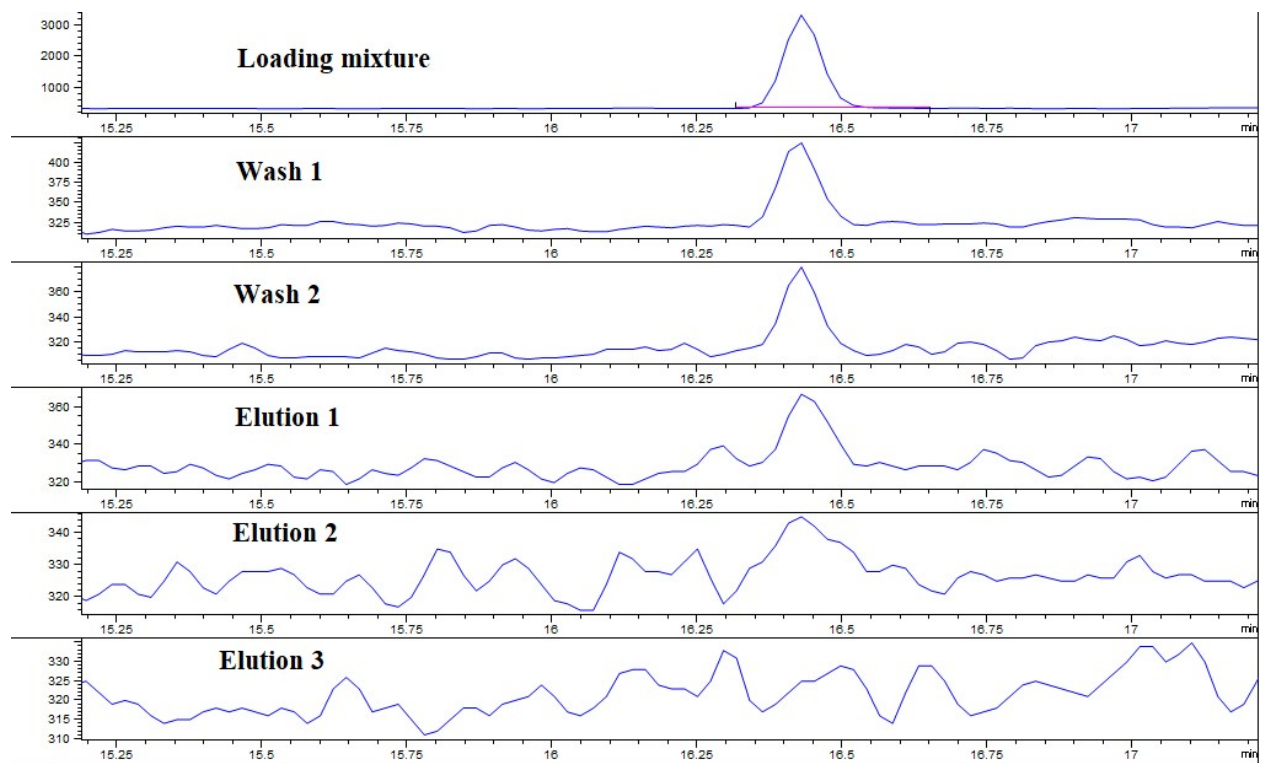


*(Electronic Supplementary Information)*

Cell-membrane coated iron oxide nanoparticles for  
isolation and specific identification of drug leads  
from complex matrices

Jennifer Sherwood, Josiah Sowell, Nicholas Beyer, Jessica Irvin, Cayman Stephen, Angelo A.  
Antone, Yuping Bao\* and Lukasz M. Ciesla\*



**Fig. S1.** HPLC-ESI-MS chromatograms (negative ionization mode) of fishing experiments using CMNPs with  $\alpha_3\beta_4$  receptors and artificial mixture: washing and elution profiles showing the binding patterns of caffeic acid (#7, nonbinder).