

# Acidity-Responsive Shell-Sheddable Camptothecin-based Nanofiber for Carrier-free Cancer Drug Delivery

Zhuha Zhou<sup>a,b,‡</sup>, Ying Piao<sup>b,‡</sup>, Lingqiao Hao<sup>b</sup>, Guanyu Wang<sup>a,\*</sup>, Zhuxian Zhou<sup>b,c\*</sup>, and Youqing Shen<sup>b</sup>

<sup>a</sup>Department of General Surgery, Sir Run Run Shaw Hospital, School of Medicine, Zhejiang University, East Qingchun Road 3, 310016, Hangzhou, Zhejiang, China.

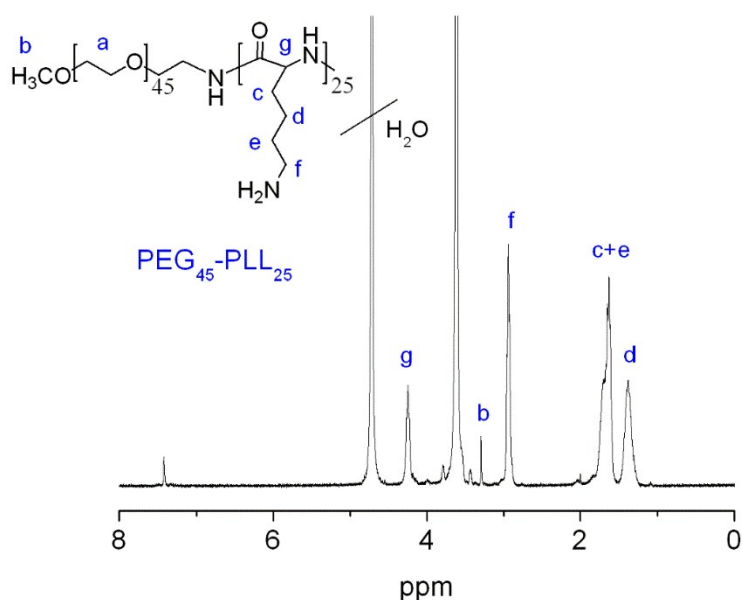
<sup>b</sup>Key Laboratory of Biomass Chemical Engineering of Ministry of Education, College of Chemical and Biological Engineering, Zhejiang University, Hangzhou 310027, China

<sup>c</sup>Department of Chemical and Petroleum Engineering, University of Wyoming, Laramie, WY 82070 (USA)

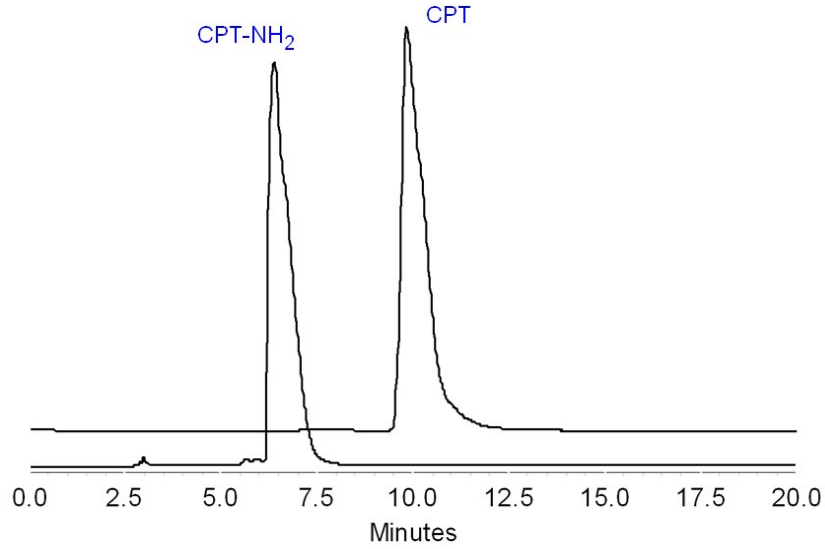
E-mail: wangguanyu@zju.edu.cn or zhouzx@zju.edu.cn

<sup>‡</sup> Equal contributor.

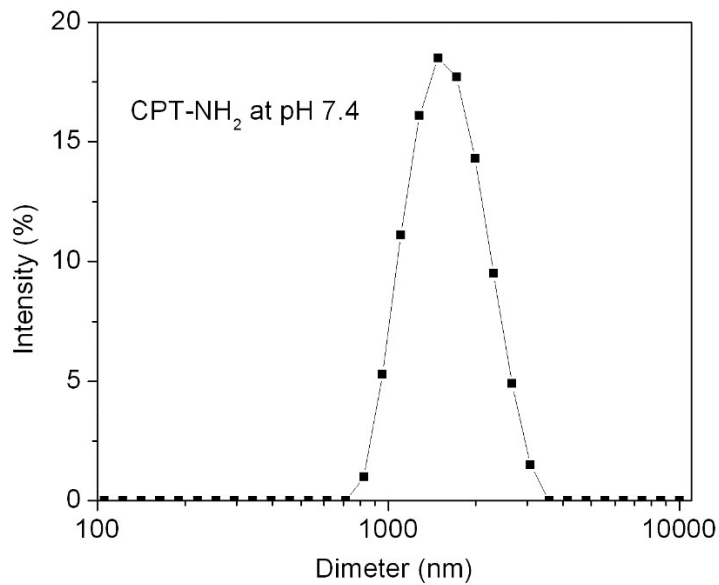
## Supporting Figures



**Supporting Figure 1.** The <sup>1</sup>H NMR spectrum of PEG<sub>45</sub>-PLL<sub>25</sub> in D<sub>2</sub>O.



**Supporting Figure 2.** The HPLC chromatograms of CPT-NH<sub>2</sub> and CPT. HPLC condition: gradient elution was running from 20% ACN to 50% ACN within 20 min followed with isocratic elution of 50% ACN.



**Supporting Figure 3.** The volumetric size of CPT-NH<sub>2</sub> (0.5 mg/mL, pH 7.4) determined by measured by dynamic light scattering.