

# **Gadolinium-doped Carbon Dots as Nano-theranostic Agent for MR/FL Diagnosis and Gene Delivery**

Xi He<sup>1</sup>, Qiang Luo<sup>2</sup>, Ji Zhang\*<sup>1</sup>, Ping Chen<sup>1</sup>, Hai-Jiao Wang<sup>1</sup>, Kui Luo<sup>2</sup> and Xiao-Qi Yu\*<sup>1</sup>

<sup>1</sup> Key Laboratory of Green Chemistry and Technology (Ministry of Education), College of Chemistry, Sichuan University, Chengdu 610064, P. R. China

<sup>2</sup> Huaxi MR Research Center (HMRRC), Department of Radiology, West China Hospital, Sichuan University, Chengdu 610041, P. R. China

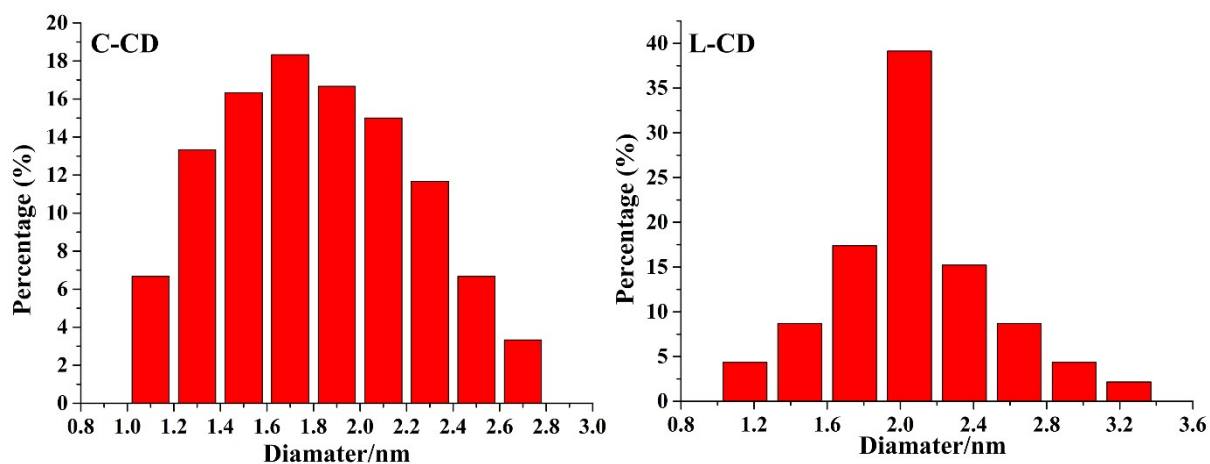


Fig. S1 The particle size distribution of C-CD and L-CD.

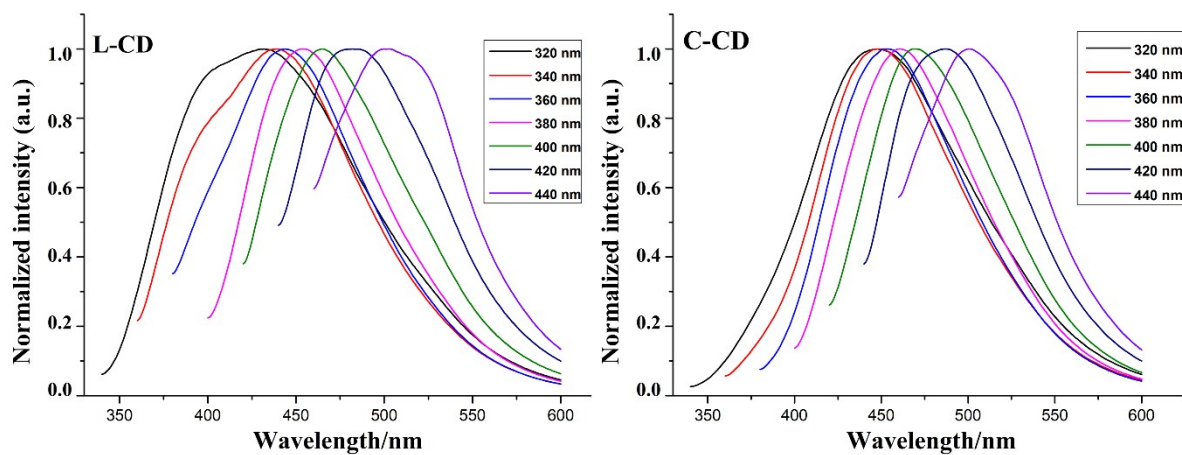


Fig. S2 The normalized fluorescent spectra of C-CD/L-CD at different excitation wavelengths.

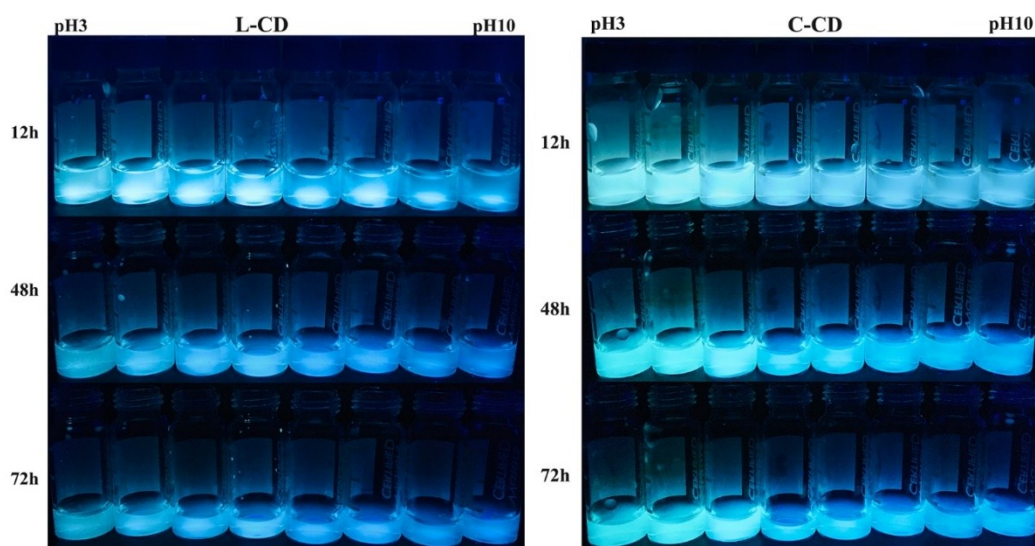
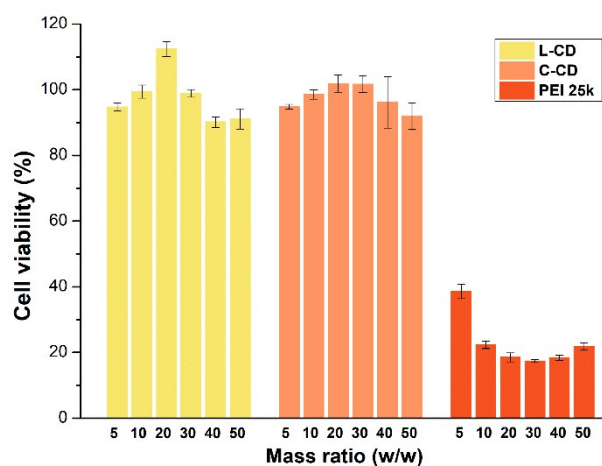
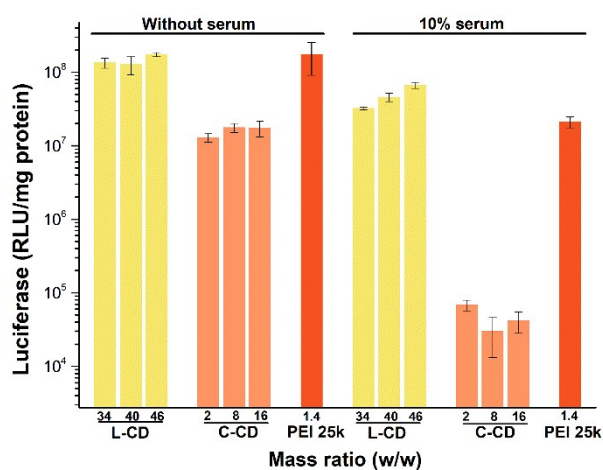


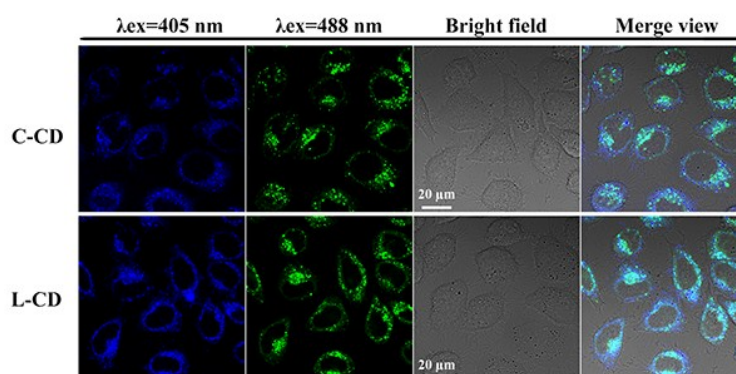
Fig. S3 The photos of L-CD/C-CD solutions in different times under UV light (365 nm).



**Fig. S4** Cell viability of CDs/DNA complexes in HEK293 cells (data represent mean  $\pm$  SD, n = 3).



**Fig. S5** The luciferase expression transfected by CDs and PEI 25kDa in HEK293 cells (data represent mean  $\pm$  SD, n = 3).



**Fig. S6** The images of HeLa cells incubated with CDs at different excitation wavelengths.