

SUPPORTING INFORMATION

Nanogrooved microdiscs for bottom-up modulation of osteogenic differentiation

Isabel M. Bjørge, Insung S. Choi, Clara R. Correia,[†] and João F. Mano[†]

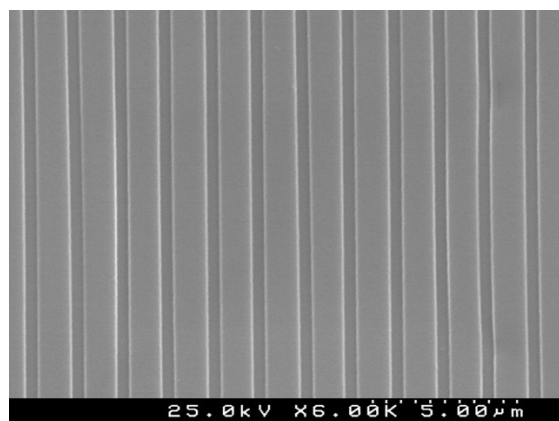


Figure S1. SEM image of topography of the used optical media substrate (CD).

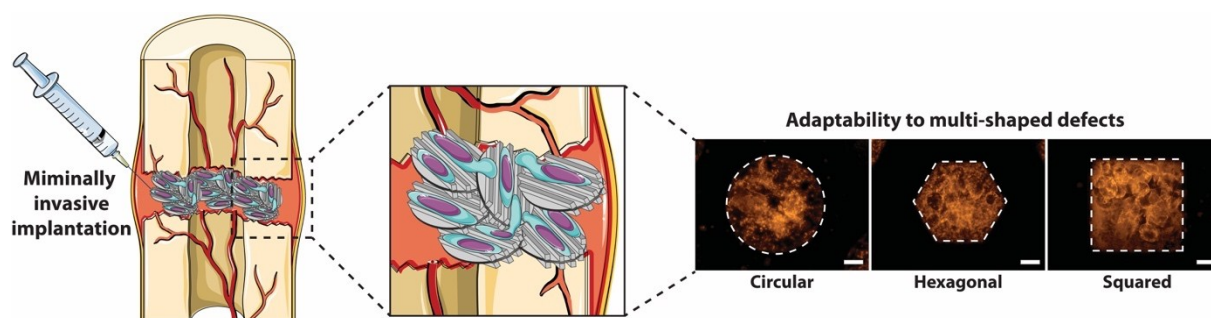


Figure S2. Schematic representation of the potential of topodiscs as injectable cell-carriers for bone regeneration upon fracture due to their adaptability to multi-shaped defects. Right: topodisc-cell aggregates acquire the shape of 2D patterned regions with circular, hexagonal, and squared geometries. Scale bars correspond to 200 μm.