

## Local scale structural changes of working OFET devices – Supporting information

L. S. Grodd, E. Mikayelyan, T. Dane, U. Pietsch and S. Grigorian

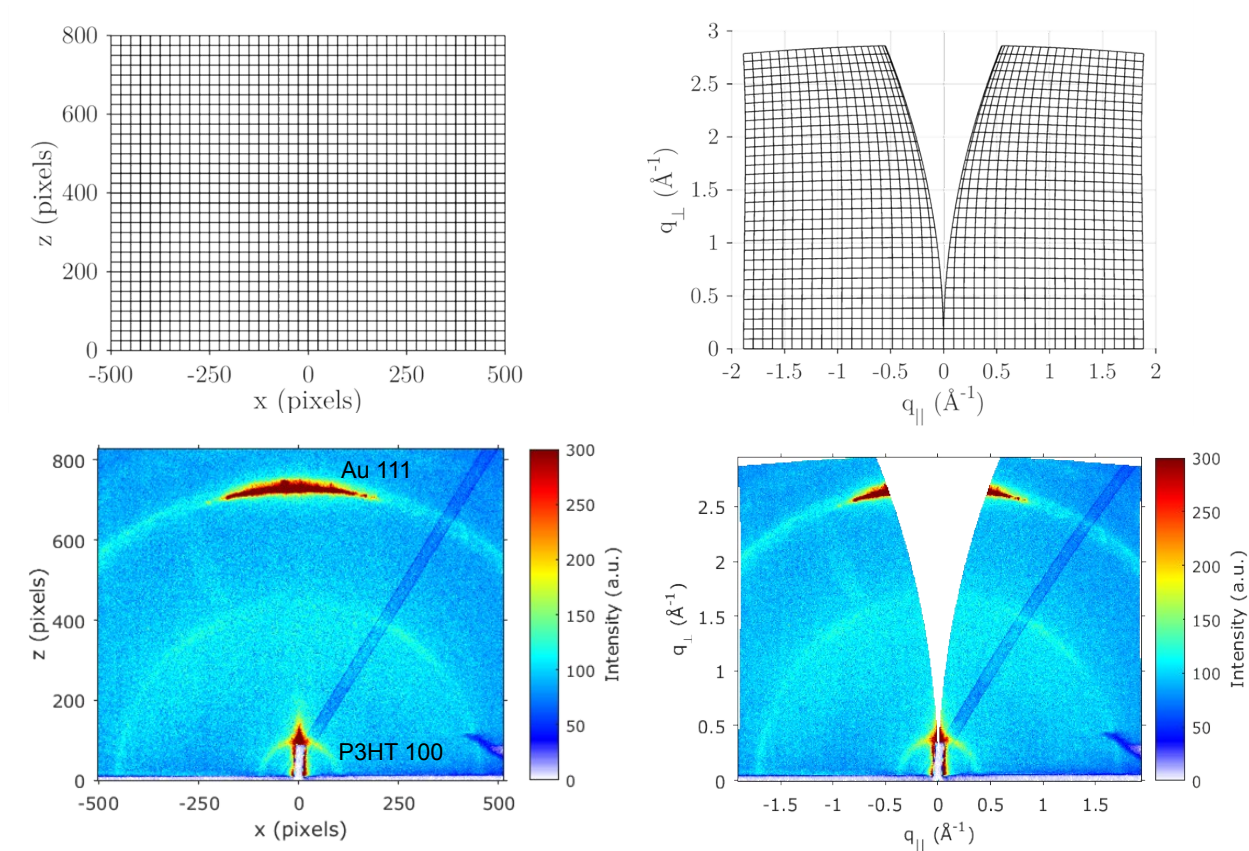


Figure S1: Conversion of nanoGIXD pattern from 2D detector image to q-space map

Polar maps facilitate the determination of azimuthal line profiles. For this reason the q-space maps are converted from cartesian to polar coordinates.

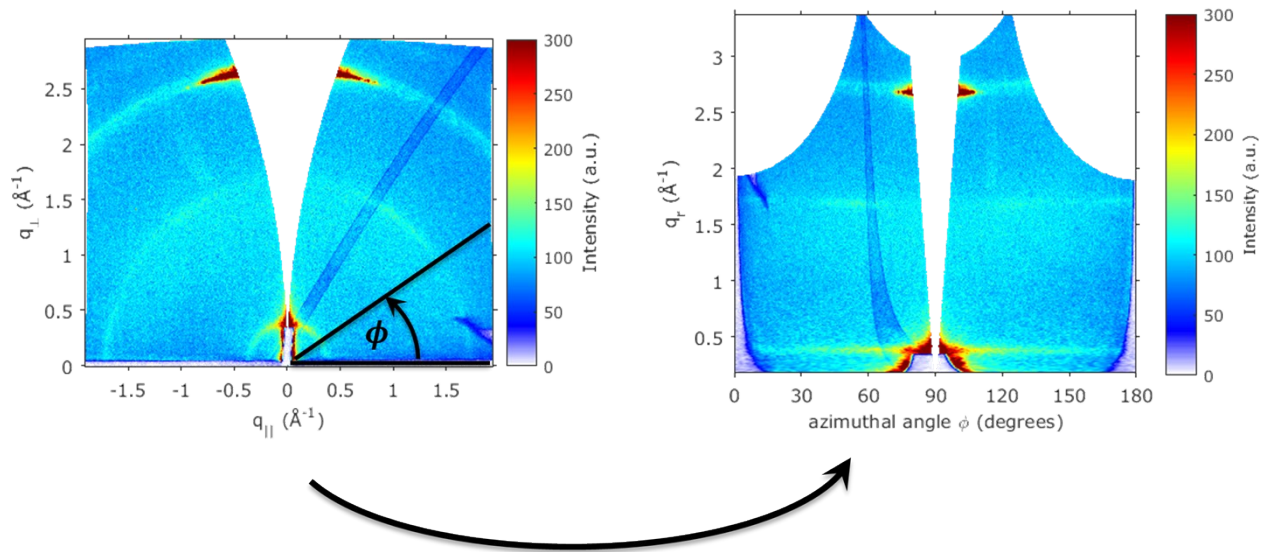


Figure S2: Conversion from Cartesian to polar map

Due to geometrical constraints as seen in the figures above the accessible integration region is limited from  $11^\circ$  to  $44^\circ$ .