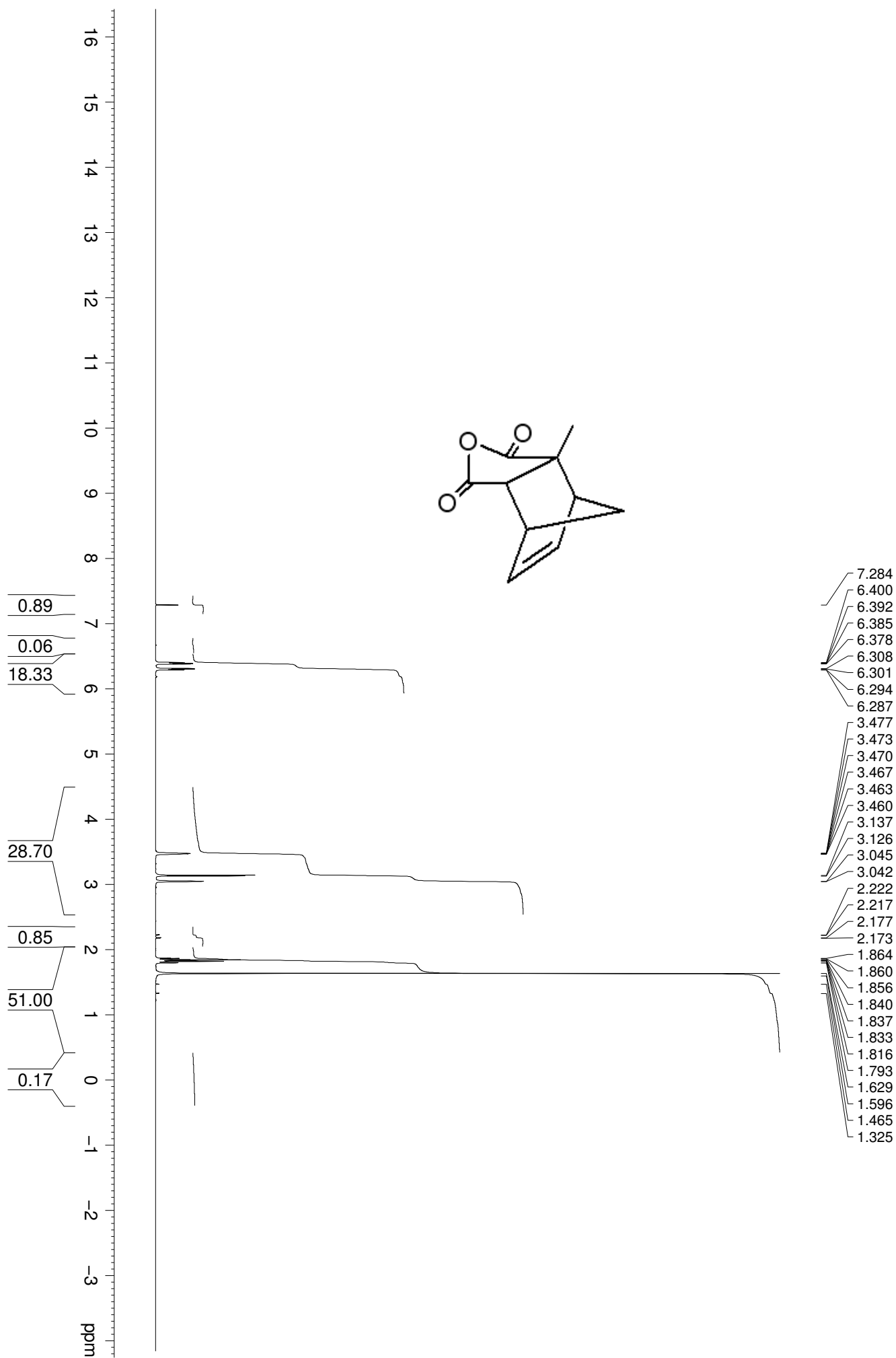


Test L1E-2

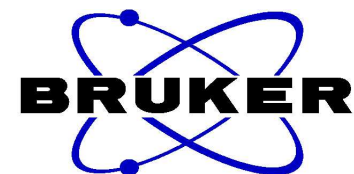
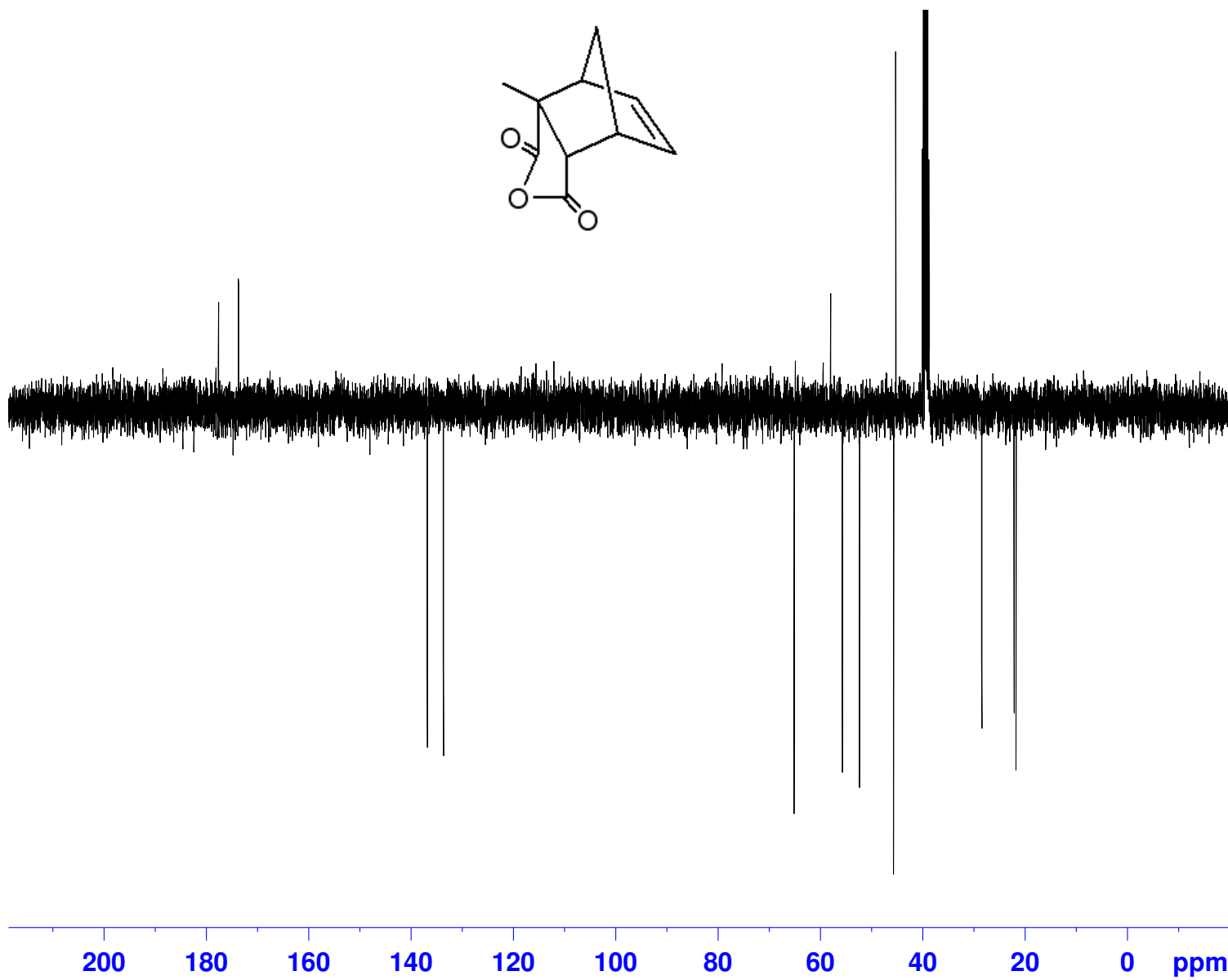
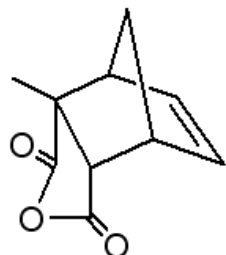


LLE-3. Solid sample

177.68
173.77

136.86
133.71

65.15
58.00
55.70
52.38
45.71
45.28
40.06
39.85
39.64
39.44
39.23
39.02
38.81
28.46
22.15
21.79



Current Data Parameters
NAME LLE110707
EXPNO 31
PROCNO 1

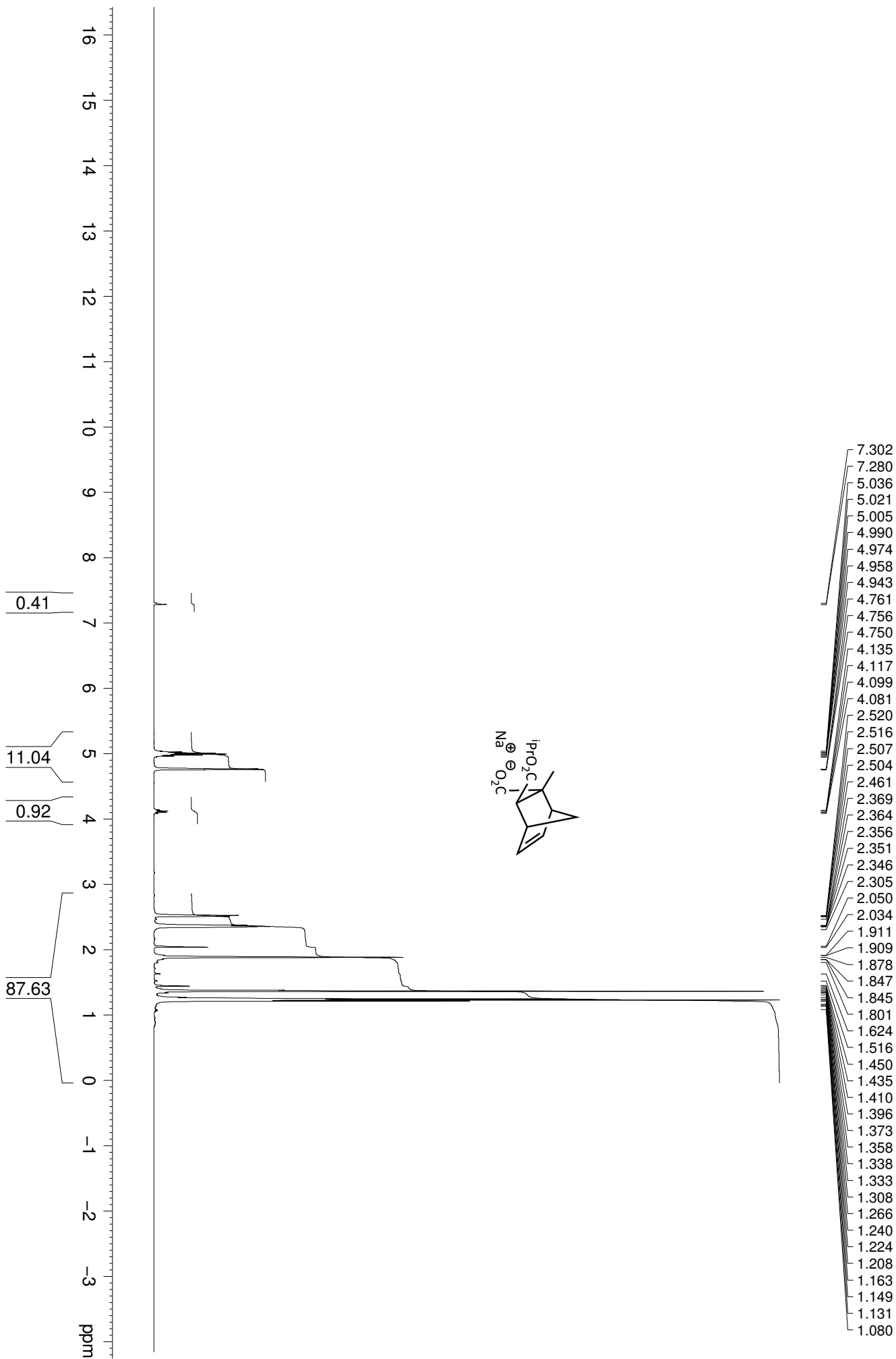
F2 - Acquisition Parameters
Date_ 20110707
Time 15.39
INSTRUM DPX400
PROBHD 5 mm QNP 1H/13
PULPROG deptq_135
TD 65536
SOLVENT DMSO
NS 512
DS 4
SWH 23980.814 Hz
FIDRES 0.365918 Hz
AQ 1.3664756 sec
RG 11585.2
DW 20.850 usec
DE 6.00 usec
TE 295.2 K
CNST2 145.0000000
D1 2.0000000 sec
d2 0.00344828 sec
D11 0.03000000 sec
DELTA 0.00001019 sec

==== CHANNEL f1 =====
NUC1 13C
P1 8.00 usec
P2 16.00 usec
PL1 -2.60 dB
SFO1 100.6228300 MHz

==== CHANNEL f2 =====
CPDPRG2 waltz16
NUC2 1H
P3 10.00 usec
P4 20.00 usec
PCPD2 80.00 usec
PL2 -1.50 dB
PL12 17.50 dB
SFO2 400.1316000 MHz

F2 - Processing parameters
SI 32768
SF 100.6128193 MHz
WDW EM
SSB 0
LB 1.00 Hz
GB 0
PC 1.40

LIE/5. Proton



LLE/5.Carbon

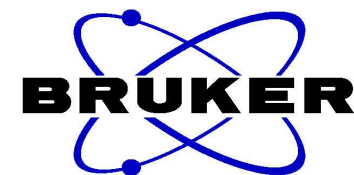
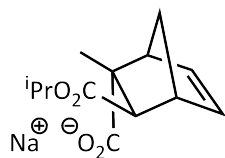
177.70
169.41

81.90
77.41
77.09
76.77
68.62

52.24
51.20

35.31
32.89
31.75
28.95
21.79
21.68

10.53



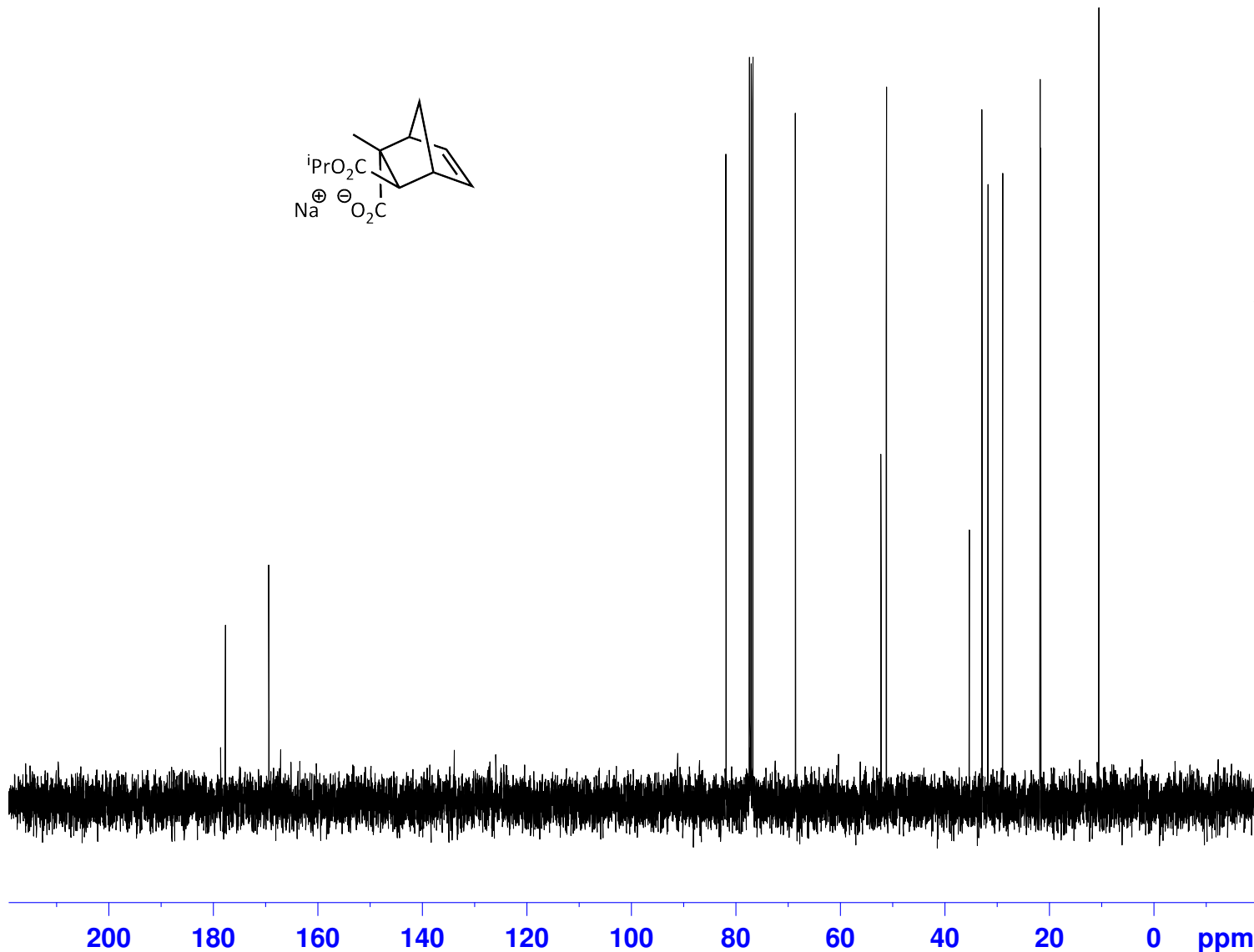
Current Data Parameters
 NAME LLE110712
 EXPNO 11
 PROCNO 1

F2 - Acquisition Parameters
 Date_ 20110712
 Time 10.57
 INSTRUM DPX400
 PROBHD 5 mm QNP 1H/13
 PULPROG zgpg30
 TD 65536
 SOLVENT CDCl3
 NS 32
 DS 2
 SWH 23980.814 Hz
 FIDRES 0.365918 Hz
 AQ 1.3664756 sec
 RG 4096
 DW 20.850 usec
 DE 6.00 usec
 TE 295.2 K
 D1 2.0000000 sec
 d11 0.0300000 sec
 DELTA 1.89999998 sec
 TD0 1

==== CHANNEL f1 =====
 NUC1 13C
 P1 8.00 usec
 PL1 -2.60 dB
 SFO1 100.6228298 MHz

==== CHANNEL f2 =====
 CPDPRG2 waltz16
 NUC2 1H
 PCPD2 80.00 usec
 PL2 -1.50 dB
 PL12 17.50 dB
 PL13 17.50 dB
 SFO2 400.1316005 MHz

F2 - Processing parameters
 SI 32768
 SF 100.6127690 MHz
 WDW EM
 SSB 0
 LB 1.00 Hz
 GB 0
 PC 1.40



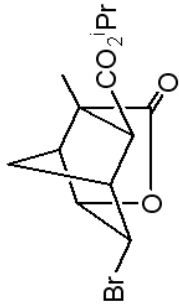
Current Data Parameters
 Name: mch-2604-2002
 PROCNO: 1
 F2 - Acquisition Parameters
 Date_: 20021204
 Time: 12.00
 INSTRUM: AV360
 PULPROG: zgpg30
 TO: 32768
 SOLVENT: CDC13
 NS: 16
 DS: 2
 SWH: 7440.476 Hz
 FIDRES: 0.227085 Hz
 AQ: 2.2020595 sec
 SFO1: 360.1322240 MHz
 ZM: 67.200 usec
 JE: 6.00 usec
 TE: 300.0 K
 D1: 0.10000000 sec

***** CHANNEL f1 *****
 NUC1: 13C
 P1: 11.60 usec
 PL1: 1.00 dB
 SFO1: 360.1322240 MHz

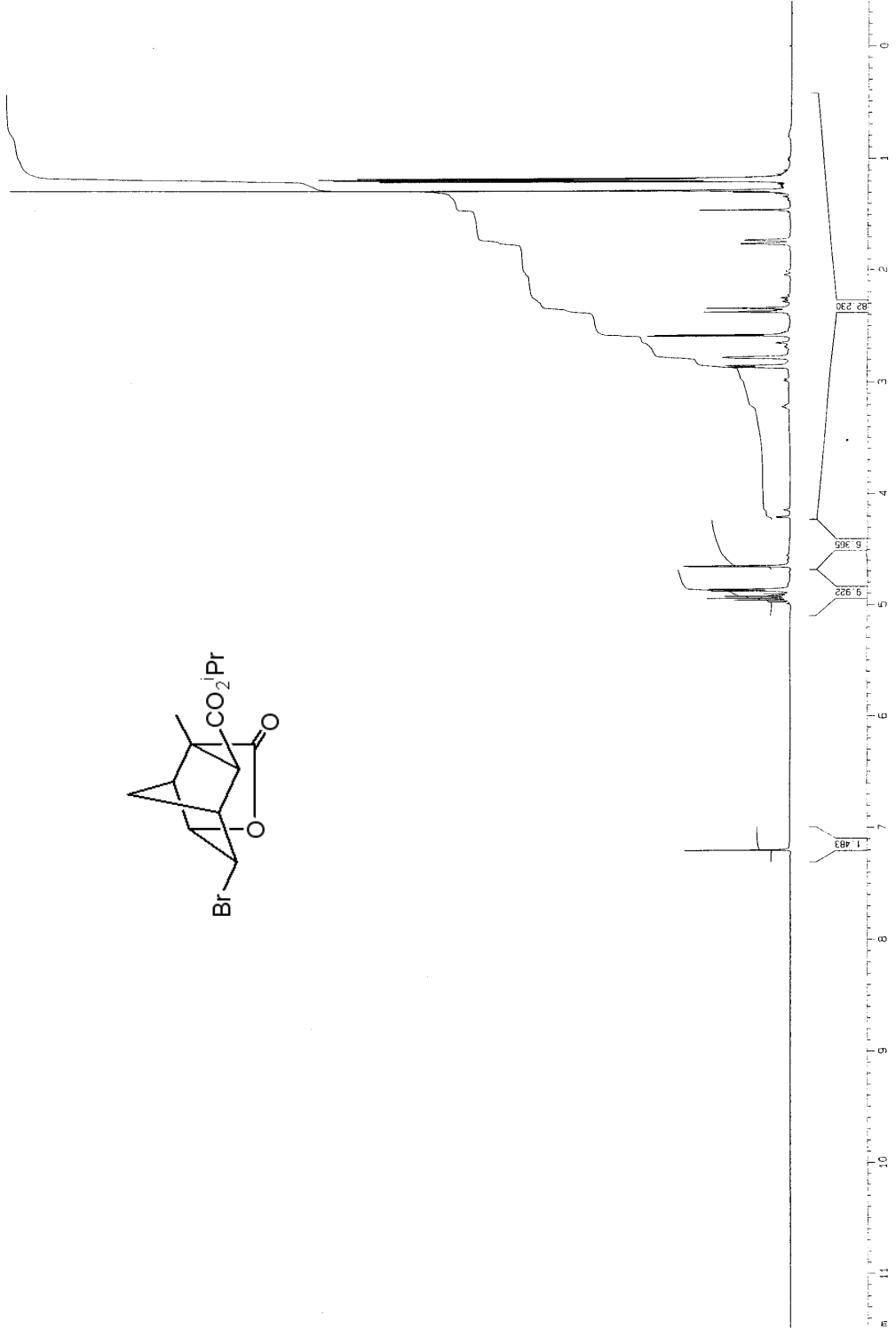
F2 - Processing parameters
 SI: 32768
 SF: 360.1300293 MHz
 WPC: 0
 SSB: 0
 LB: 0.30 Hz
 GB: 0
 PC: 4.00

10 NMR plot parameters
 SI: 32768
 SF: 360.1300293 MHz
 CY: 21.50 cm
 F1: 11.60000000
 F2: 4177.51 Hz
 F3: -0.40000000
 F4: -144.05 Hz
 PPM0: 0.32286 ppm/cm
 FWHM: 123.47315 Hz/cm

1.9741
 1.9568
 1.9394
 1.9219
 1.9044
 1.8900
 1.8732
 1.8552
 1.8493
 1.8083
 1.8017
 1.447
 1.1402
 1.0954
 1.0885
 1.0845
 1.0896
 1.0839
 1.0502
 1.0487
 1.0487
 2.5857
 2.5762
 2.5650
 0.746
 2.3088
 1.921
 1.9159
 1.7594
 1.7560
 1.7277
 1.7233
 1.458
 1.3087
 1.2969
 1.2809
 1.2412
 1.2240
 1.1988
 1.1878
 1.1815
 1.1704
 1.1608
 1.1538
 1.1413
 1.1367



7.1976



Current Data Parameters
 NAME mch-Ec04-2002
 EXPNO 2
 PROCNO 1

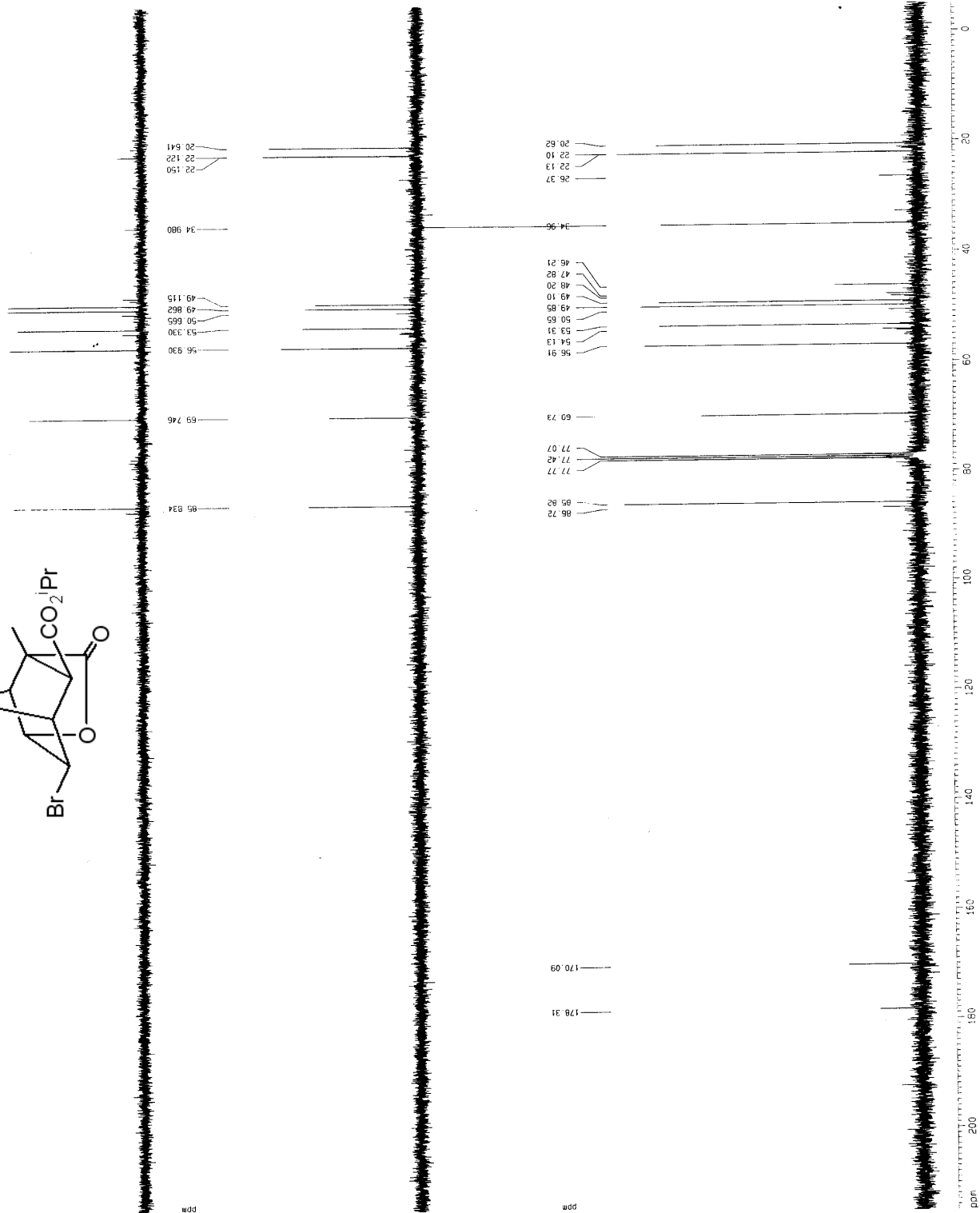
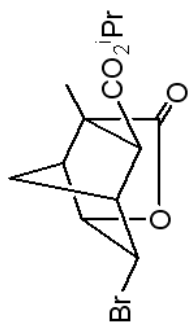
F2 - Acquisition Parameters
 Date_ 20020825
 Time 14:25
 INSTRUM AV360
 PROBO 5 mm QNP 1H/1
 PULPROG zgpg30
 TD 65536
 SOLVENT CDCl3
 NS 640
 DS 4
 SWH 27173.912 Hz
 FIDRES 0.414641 Hz
 AQ 1.2059124 sec
 RG 40
 DB 11585.2
 JC 19.400 usec
 JE 6.00 usec
 TE 300.2 K
 DE 11.0000000 sec
 DF 0.03000000 sec
 EI 0.00000000 sec
 SI 2

***** CHANNEL f1 *****
 NUC1 13C
 P1 1.00 usec
 PL 0.00 dB
 SFO1 90.563626 MHz

***** CHANNEL f2 *****
 CPDPRG2 waltz16
 NUC2 1H
 P2 80.00 usec
 PL2 19.00 dB
 PL12 17.77 dB
 SFO2 350.1314025 MHz

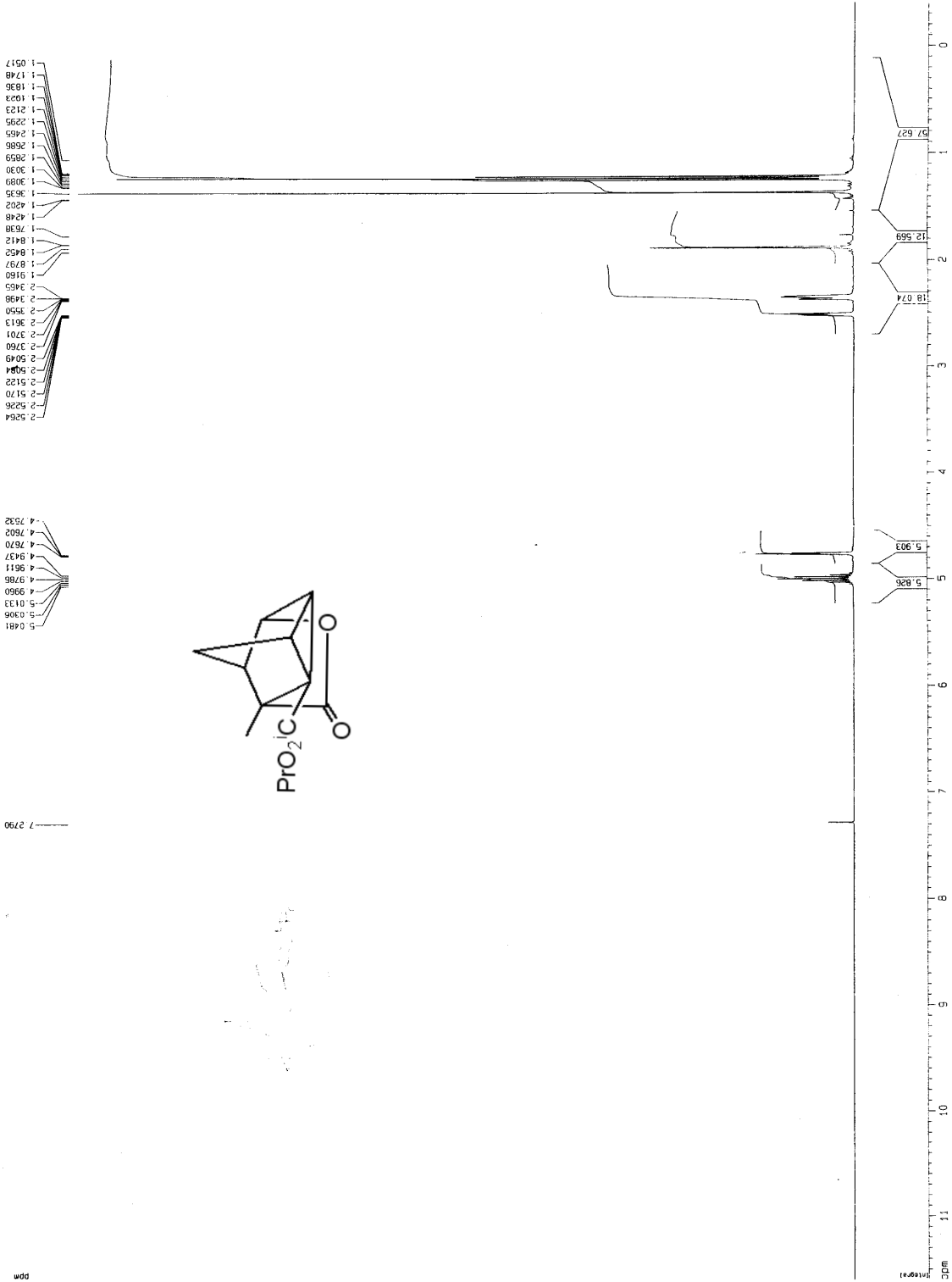
F2 - Processing parameters
 SI 32768
 SF 90.563626 MHz
 DS 4
 SWH 0
 GB 0
 PC 1.40

10 NMR pilot parameters
 CA 30.00 cm
 CB 30.00 cm
 CP 215.000 ppm
 F1 19459.27 Hz
 F2 -5.000 ppm
 F2 -452.77 Hz
 SHCN 6.28571 ppm/cm
 XCN 565.40111 Hz/cm



tricyclane
 proton.k CDC13 {C:\bruker\xwin-nmr} ka 8

Current Data Parameters
 Name ka-Apr-03-2002
 EXPNO 1
 PROCNO 1
 F2 - Acquisition Parameters
 Date_ 20020403
 Time 11.23
 INSTRUM AV360
 PROBHD 5 mm QNP 1H/1
 PULPROG zgpg30
 SOLVENT CDC13
 NS 16
 DS 2
 SWH 7440.476 Hz
 FIDRES 0.227085 Hz
 AQ 2.202095 sec
 RG 675.3
 CM 675.3
 SFO1 300.1322340 MHz
 TE 300.0 K
 D1 0.10000000 sec
 ***** CHANNEL f1 *****
 NUC1 1H
 P1 14.00 usec
 PL1 0.00 dB
 SFO1 300.1322340 MHz
 F2 - Processing parameters
 SI 16384
 SF 360.1300000 MHz
 EQ
 SSB 0.30 Hz
 LB 0
 GB 4.00
 PC
 ID NMR plot parameters
 CX 35.00 cm
 CY 2.00 cm
 CZ 2.00 cm
 FID 11.800 ppm
 F1 4377.51 Hz
 F2 -0.400 ppm
 F3 -144.05 Hz
 GAMMA 0.34286 DDP/cm
 WCN 123.47314 Hz/cm



1.0517
1.1748
1.1836
1.1932
1.2123
1.2295
1.2465
1.2686
1.2859
1.3030
1.3089
1.3676
1.4202
1.4748
1.7638
1.8412
1.8452
1.8797
1.9180
1.9455
2.1498
2.3505
2.3613
2.3701
2.3760
2.5049
2.5094
2.5128
2.5170
2.5264

4.7322
4.7802
4.7870
4.9437
4.9611
4.9786
4.9960
5.0133
5.0306
5.0481

7.2790

ppm

tricyclane
c13cpdno.k CDC13 (C:\bruker\Xwin-nmr) ka 57

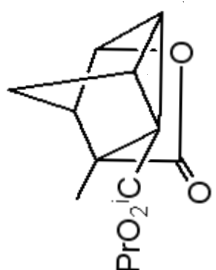
Current Data Parameters
 NAME k3-Apr03-2002
 EXPNO 5
 PROCNO 1
 F2 - Acquisition Parameters
 Date_ 20020604
 Time 0:10
 INSTRUM AV360
 PROBHD 5 mm QNP 1H/1
 PULPROG zgpg30
 TD 65536
 SOLVENT CDCl3
 NS 648
 DS 4
 SWH 27173.912 Hz
 FIDRES 0.414641 Hz
 AQ 1.20059124 sec
 RG 114
 JW 400.000000
 F2 400.146000 MHz
 TE 300.0 K
 D1 0.01000000 sec
 d11 0.03000000 sec
 d12 0.00020000 sec

***** CHANNEL f1 *****
 NUC1 13C
 P1 12.00 usec
 PL1 0.00 dB
 SFO1 90.5646860 MHz

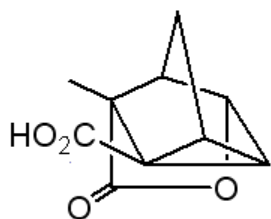
***** CHANNEL f2 *****
 CPDPRG2 waltz16
 NUC2 1H
 P2 8.00 usec
 PL2 0.00 dB
 PL12 21.00 dB
 PL13 120.00 dB
 SFO2 360.1314405 MHz

F2 - Processing parameters
 F1 99.268 MHz
 SF 90.55728 MHz
 NDM 0
 EN 0
 SSB 0
 -B 1.00 Hz
 GB 0
 PC 1.40

G3 NMR d1st parameters
 CY 35.00 cm
 CX 18.70 cm
 F1P 215.000 ppm
 F1 194.6927 Hz
 F2P -5.000 ppm
 F2 -482.77 Hz
 -PHCK 6.28871 ppm/cm
 -LEN 589.20111 Hz/cm



LLE-6.Proton

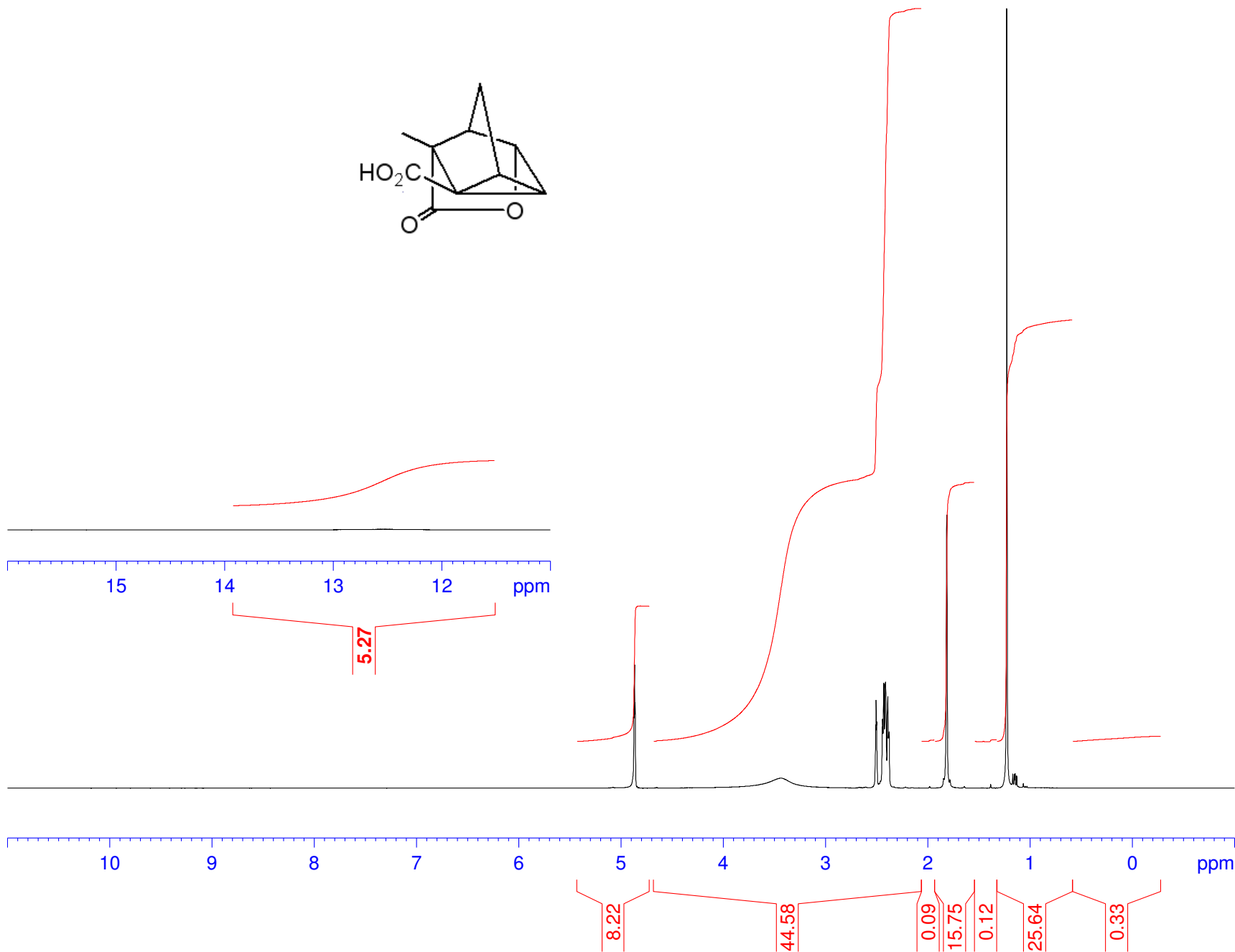


Current Data Parameters
NAME LLE110713
EXPNO 10
PROCNO 1

F2 - Acquisition Parameters
Date_ 20110713
Time 10.53
INSTRUM DPX400
PROBHD 5 mm QNP 1H/13
PULPROG zg30
TD 32768
SOLVENT DMSO
NS 16
DS 2
SWH 8278.146 Hz
FIDRES 0.252629 Hz
AQ 1.9792372 sec
RG 256
DW 60.400 usec
DE 6.00 usec
TE 294.2 K
D1 1.00000000 sec
TD0 1

==== CHANNEL f1 =====
NUC1 1H
P1 10.00 usec
PL1 -1.50 dB
SF01 400.1324710 MHz

F2 - Processing parameters
SI 16384
SF 400.1300000 MHz
WDW EM
SSB 0
LB 0.30 Hz
GB 0
PC 1.40

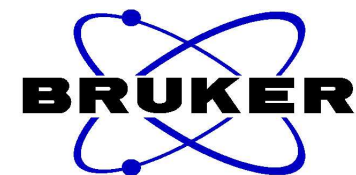
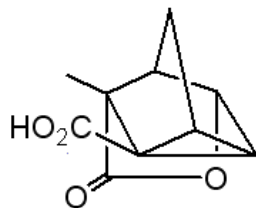


LLE-6. Carbon DEPT

177.64
171.28

81.73

51.62
50.40
40.07
39.86
39.65
39.44
39.23
39.02
38.81
34.48
32.09
31.42
28.42
21.45
10.05



Current Data Parameters
 NAME LLE110713
 EXPNO 11
 PROCNO 1

F2 - Acquisition Parameters
 Date_ 20110713
 Time 11.23
 INSTRUM DPX400
 PROBHD 5 mm QNP 1H/13
 PULPROG deptq_135
 TD 65536
 SOLVENT DMSO
 NS 512
 DS 4
 SWH 23980.814 Hz
 FIDRES 0.365918 Hz
 AQ 1.3664756 sec
 RG 11585.2
 DW 20.850 usec
 DE 6.00 usec
 TE 294.2 K
 CNST2 145.0000000
 D1 2.0000000 sec
 d2 0.00344828 sec
 D11 0.03000000 sec
 DELTA 0.00001019 sec

==== CHANNEL f1 =====
 NUC1 13C
 P1 8.00 usec
 P2 16.00 usec
 PL1 -2.60 dB
 SFO1 100.6228300 MHz

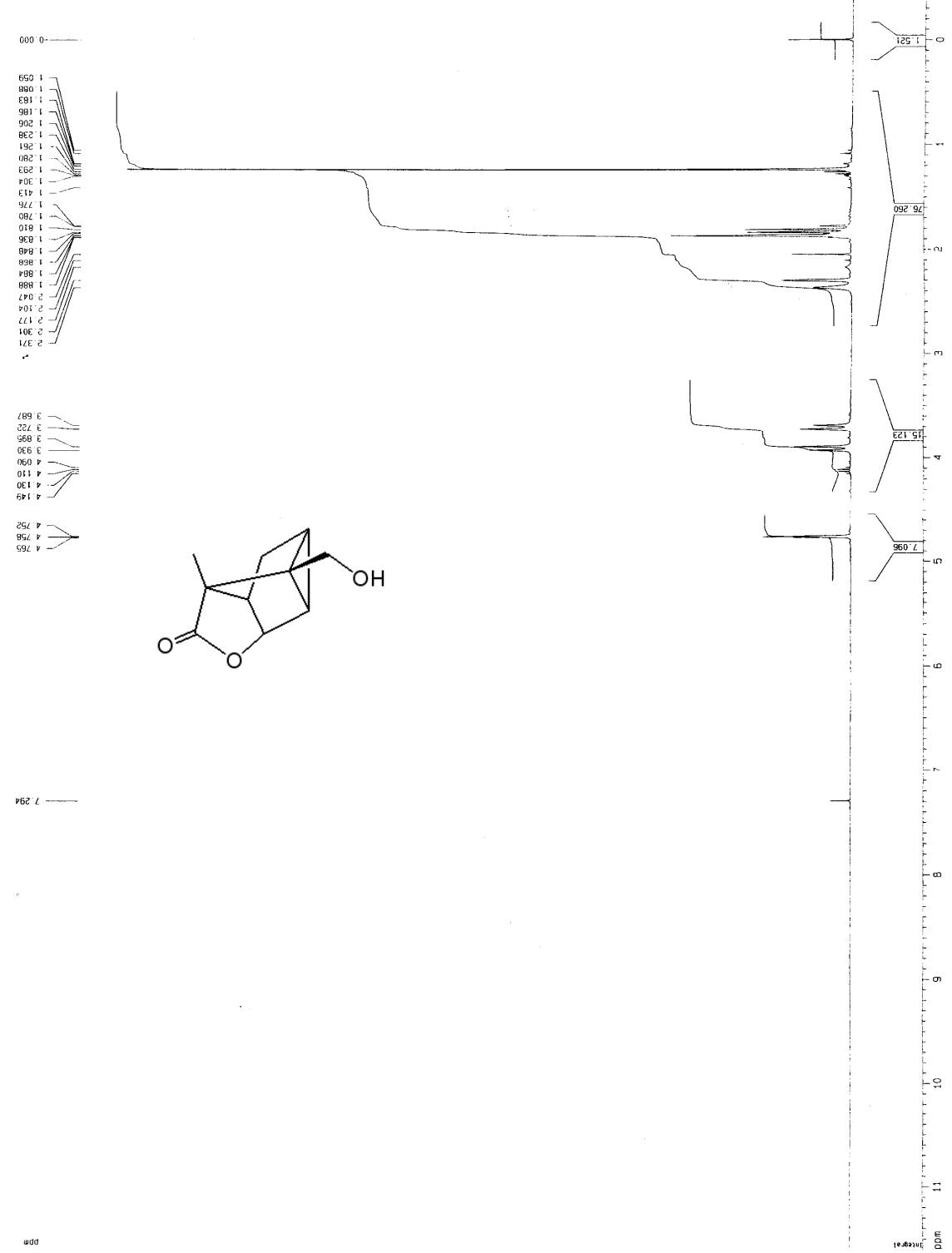
==== CHANNEL f2 =====
 CPDPRG2 waltz16
 NUC2 1H
 P3 10.00 usec
 P4 20.00 usec
 PCPD2 80.00 usec
 PL2 -1.50 dB
 PL12 17.50 dB
 SFO2 400.1316000 MHz

F2 - Processing parameters
 SI 32768
 SF 100.6128193 MHz
 WDW EM
 SSB 0
 LB 1.00 Hz
 GB 0
 PC 1.40

200 180 160 140 120 100 80 60 40 20 0 ppm

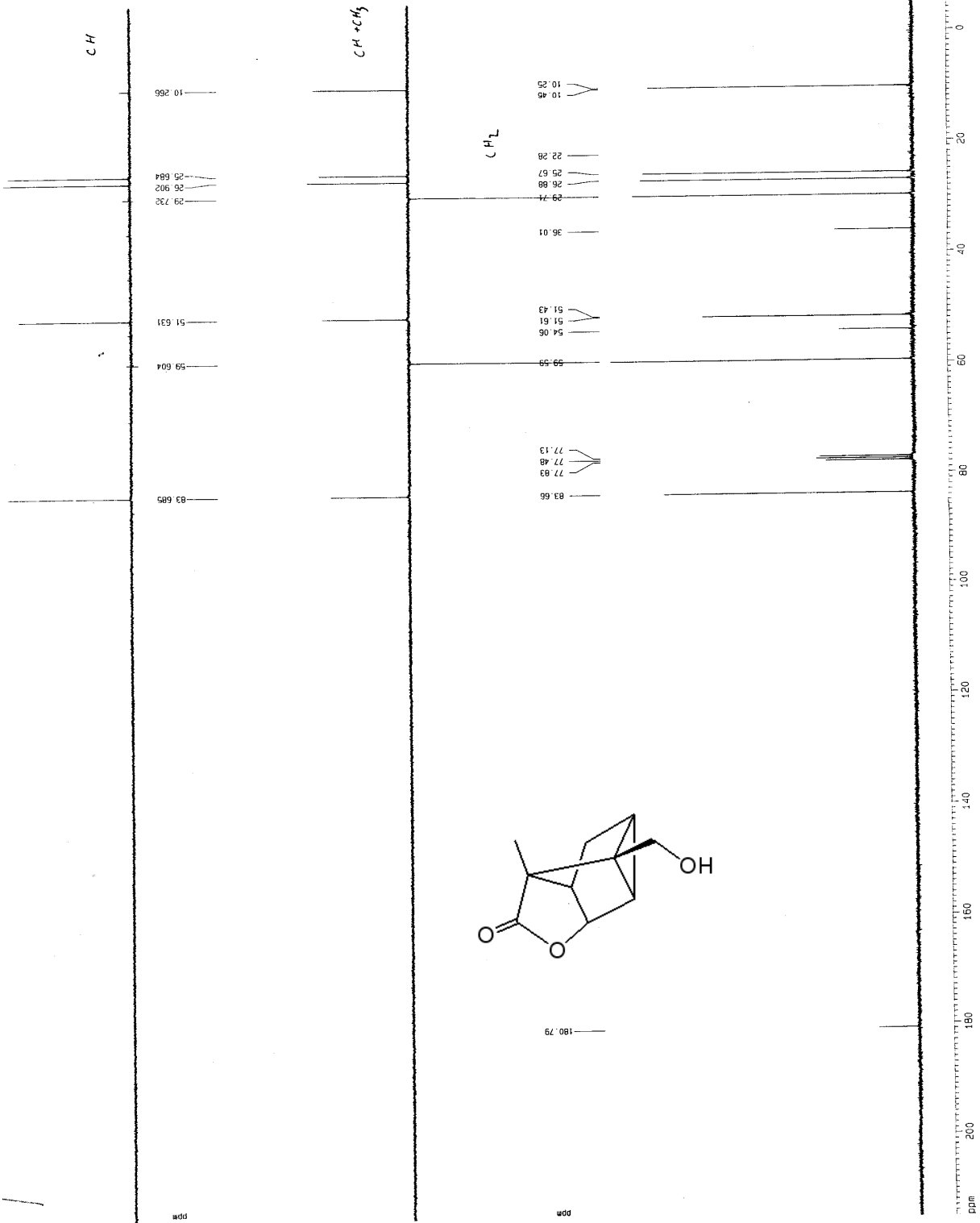
NV3/2.A9-B8
 proton.k CDC13 [C:\bruker\xwin-nmr] nv 21

Current Data Parameters
 NAME nv-3662-2003
 EXPNO 1
 PROCNO 1
 F2 - Acquisition Parameters
 Date_ 20030923
 Time 11:17
 INSTRUM AV360
 PROBM4C 5 mm QNP 1H/1
 PULPROG zg30
 TD 32768
 SOLVENT CDC13
 NS 12
 DS 2
 SWH 7440.476 Hz
 FIDRES 0.227065 Hz
 AQ 2.202895 sec
 RG 143.7
 SW 67.200 usec
 ZG 3.00 usec
 TE 300.0 K
 DE 0.10000000 sec
 ===== CHANNEL f1 =====
 NUC1 1H
 P1 11.60 usec
 PL1 0.00 dB
 SF01 360.1322246 MHz
 F2 - Processing parameters
 SI 16384
 SF 360.1289945 MHz
 MD 0
 EM 0
 GB 0
 CB 0
 PC 4.00
 1D NMR plot parameters
 CX 35.00 cm
 CY 21.50 cm
 F1 411.600 ppm
 F2 -144.000 ppm
 F3 -144.005 Hz
 PRNCH 0.34286 ppm/cm
 -ZCH 123.47314 Hz/cm

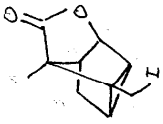


ppm

Current Data Parameters
 NAME nv-Seq17-2003
 EXPNO 3
 PROCNO 1
 F2 - Acquisition Parameters
 Date_ 20030917
 Time 21:54
 INSTRUM AV360
 PROBHD 5 mm QNP 1H/1
 PULPROG zgpg30
 SOLVENT CDC13
 NS 640
 DS 4
 SWH 27173.912 Hz
 FIDRES 0.414641 Hz
 AQ 1.2089524 sec
 RG 327.5
 DQ 149.000 usec
 DE 6.00 usec
 TE 300.0 K
 D1 0.01000000 sec
 d11 0.03000000 sec
 d12 0.00002000 sec
 ===== CHANNEL f1 =====
 NUC1 13C
 P1 13C
 PL1 8.50 usec
 PL1 6.00 dB
 SFO1 90.564660 MHz
 ===== CHANNEL f2 =====
 CPDPRG2 waltz16
 MWDW 80.00 usec
 PCPD2 1.00 dB
 PL12 17.77 dB
 PL13 120.00 dB
 SFO2 360.1314405 MHz
 F2 - Processing parameters
 SI 32768
 SF 90.5547250 MHz
 MDW EN
 SSB 0
 LB 1.00 Hz
 GB 0
 PC 1.40
 ID NMR plot parameters
 CX 35.00 cm
 CY 8.70 cm
 F1P 215 000 ppm
 F1 19485.27 Hz
 F2 500 000 ppm
 F2 59671.12 Hz
 GAMMA 13C/1H
 FIDCM 569.20111 Hz/cm



NV3/4.A9-C1
 proton.k CDC13 (C:\bruker\xwin-nmr) nv 1



Current Data Parameters
 NAME nv-5602-2003
 EXPNO 2
 PROCNO 1
 F2 - Acquisition Parameters
 Date_ 20030822
 Time 18 34
 INSTRUM AV360
 PROBHD 5 mm QNP 1H/1
 PULPROG zgpg30
 TO 32768
 SOLVENT CDC13
 NS 12
 DS 2
 SWH 7440.476 Hz
 FIDRES 0.227065 Hz
 AQ 2.2020595 sec
 RG 362
 DM 67.200 usec
 DE 6.00 usec
 TE 300.2 K
 D1 0.10000000 sec
 ***** CHANNEL f1 *****
 NUC1 1H
 P1 11.60 usec
 PL1 1.00 dB
 SFO1 360.132240 MHz
 F2 - Processing parameters
 SI 16384
 SF 360.1300024 MHz
 WDW EM
 SSB 0
 GB 0.30 Hz
 DC 4.00
 1D NMR plot parameters
 CX 35.00 cm
 CY 21.50 cm
 F1P 11.600 dB
 F2P 11.600 dB
 F3P -144.00 dB
 F2 -144.00 Hz
 PRNCH 0.34286 ppm/cm
 AZCN 123.47314 Hz/cm

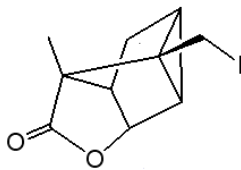
0.009
0.008

1.120
1.143
1.243
1.298
1.354
1.475
1.626
1.799
1.833
1.844
1.847
1.881
1.950
1.970
1.985
1.988
2.391

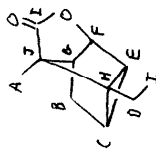
3.383
3.414
3.488
3.519

4.723
4.729
4.736

7.273



ppm



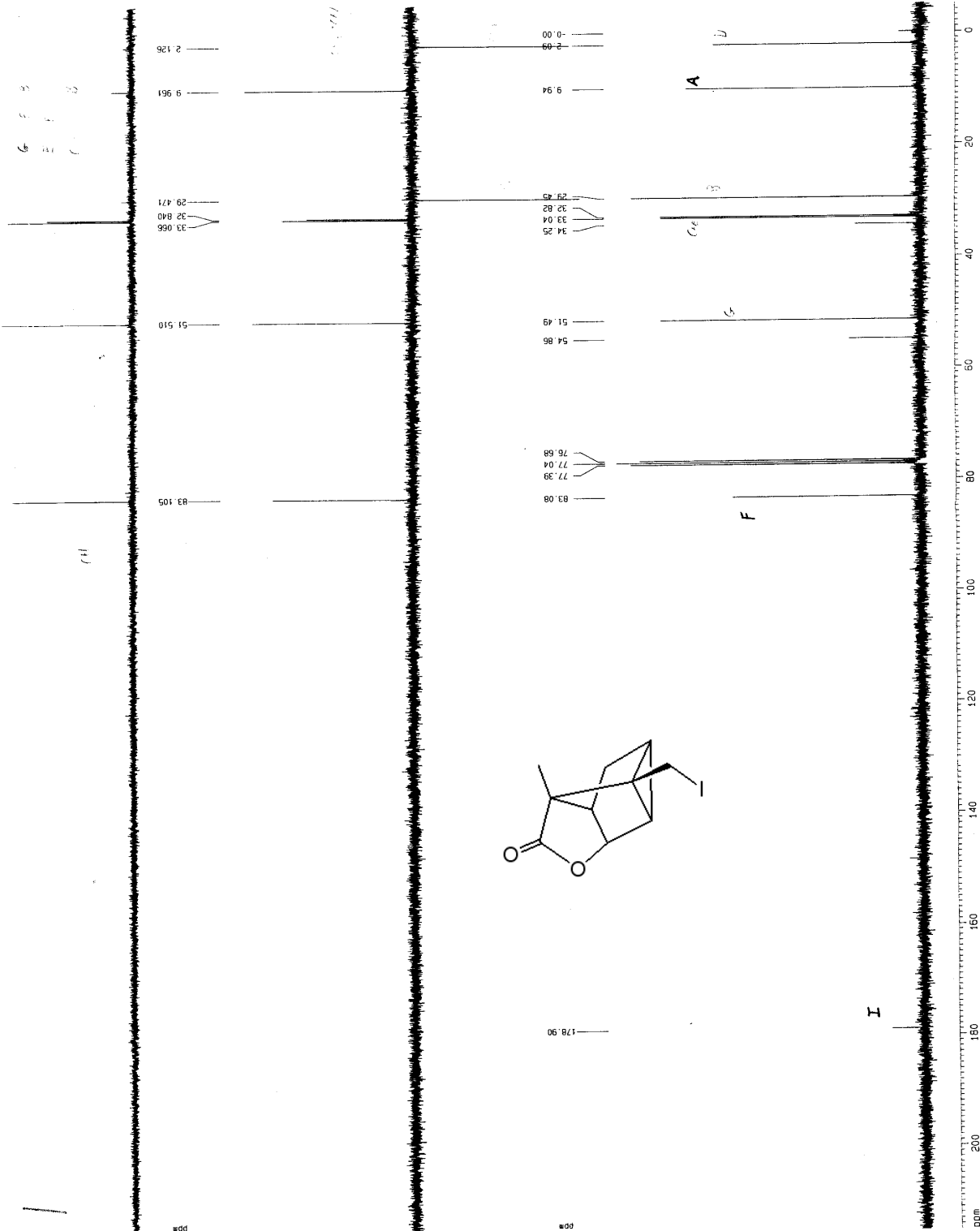
Current Data Parameters
 NAME nv-56p2-2003
 EXPNO 3
 PROCNO 1
 F2 - Acquisition Parameters
 Date_ 20030922
 Time 21.19
 INSTRUM AV360
 PROBHD 5 mm QNP 1H/1
 PULPROG zgpg30
 TD 65536
 SFO1 500.136093 MHz
 SOLVENT CDCl3
 NS 640
 DS 4
 SWH 27173.912 Hz
 FIDRES 0.414641 Hz
 AQ 1.2089124 sec
 RG 14896.5
 DQ 16.400 usec
 DE 6.00 usec
 TE 300.0 K
 D1 0.01000000 sec
 d11 0.03000000 sec
 d12 0.00020000 sec

***** CHANNEL f1 *****
 NUC1 13C
 P1 6.50 usec
 PL1 5.00 dB
 SFO1 90.5648660 MHz

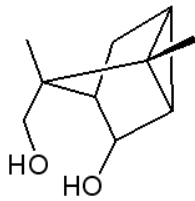
***** CHANNEL f2 *****
 CDP222 meltz16
 NUC2 1H
 P2 80.00 usec
 PL2 1.00 dB
 PL12 17.77 dB
 PL13 120.00 dB
 SFO2 360.1314405 MHz

F2 - Processing parameters
 SI 32768
 SF 90.5648660 MHz
 WDW EM
 SSB 0
 LB 1.00 Hz
 GB 0
 PC 1.40

1D NMR plot parameters
 CQ 35.00 cm
 CY 8.70 cm
 F1 215.000 ppm
 F1 19469.28 Hz
 F2 -5.000 ppm
 F2 -482.77 Hz
 PRCM 6.28571 ppm/cm
 HZCM 569.20150 Hz/cm



NV3/6 .03-C12
 PROTON C0C13 (C:\u\ General 3

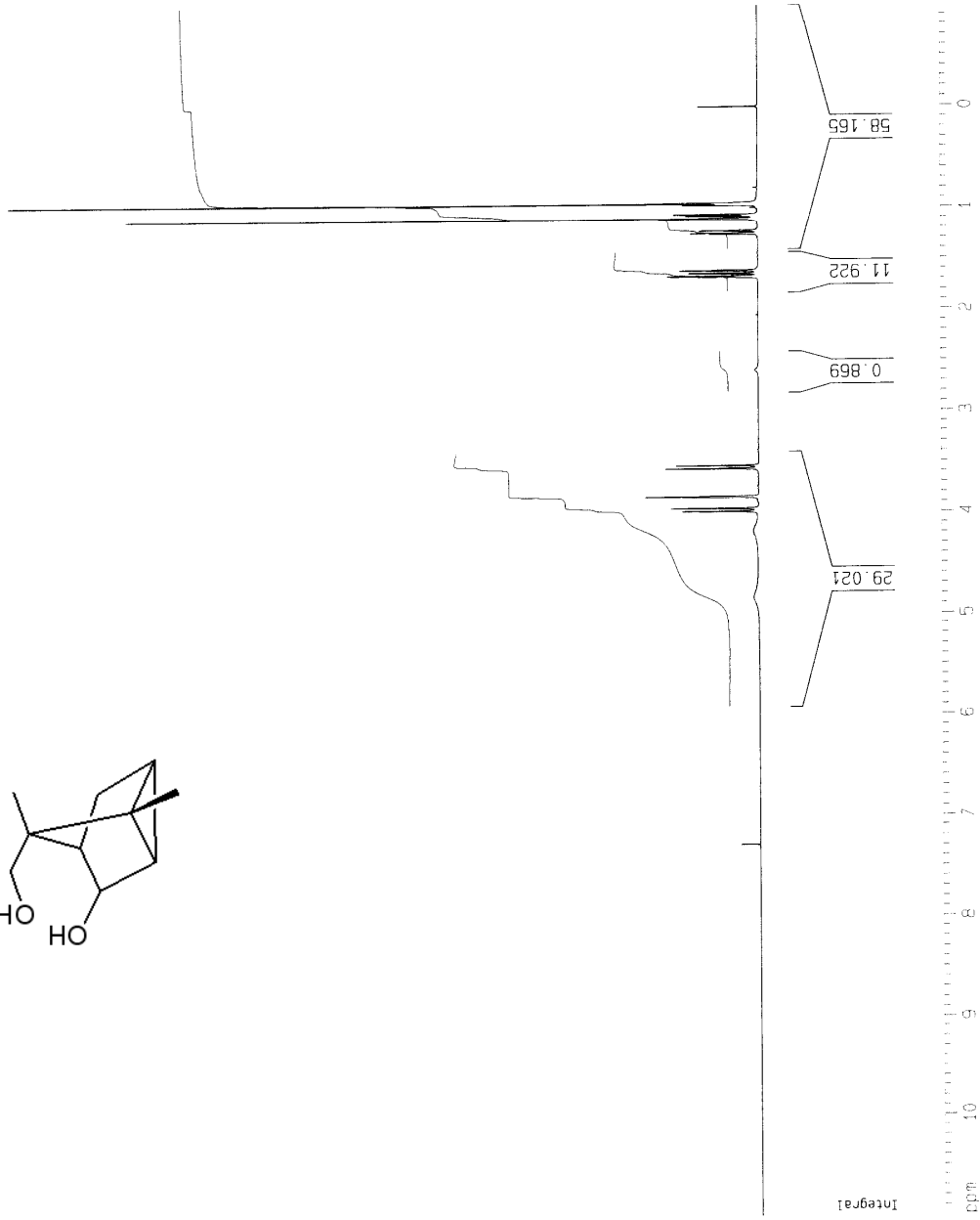


Current Data Parameters
 NAME Sep30-2003-4_3
 EXPNO 1
 PROCNO 1

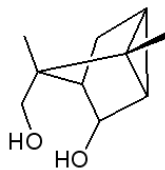
F2 - Acquisition Parameters
 Date_ 20030930
 Time 20.19
 INSTRUM spect
 PROBHD 5 mm QNP 1H/1
 PULPROG zg30
 TO 65536
 SOLVENT C0C13
 NS 16
 DS 2
 SWH 8278.146 Hz
 FIDRES 0.126314 Hz
 AQ 3.958243 sec
 RG 45.3
 DW 60.400 usec
 DE 6.00 usec
 TE 300.0 K
 D1 1.00000000 sec

===== CHANNEL f1 =====
 NUC1 1H
 P1 9.00 usec
 PL1 0.00 dB
 SF01 400.1324710 MHz

F2 - Processing parameters
 SI 32768
 SF 400.1300073 MHz
 EM
 WDW EM
 SSB 0
 LB 0.30 Hz
 GB 0
 PC 6.00
 1D NMR plot parameters
 CX 20.00 cm
 CY 12.50 cm
 F1P 11.000 ppm
 F1 4401.43 Hz
 F2P -1.000 ppm
 F2 -400.113 Hz
 PPMCM 0.60000 ppm/cm
 HZCM 240.07800 Hz/cm



NV3/6.D3-C12
 C13CPDONLY_kc1 CDC13 (C:\u) General 3



Current Data Parameters
 NAME Sep-30-2003-4_3
 EXPNO 2
 PROCNO 1

F2 - Acquisition Parameters

Date_ 20030930
 Time 20.31
 INSTRUM spect
 PROBHD 5 mm GNP 1H/1
 PULPROG zgpg30
 TD 65536
 SOLVENT CDC13
 NS 640
 DS 4
 SWH 31250.000 Hz
 FIDRES 0.476837 Hz
 AQ 1.0466259 sec
 RG 1024
 DM 16.000 usec
 DE 6.00 usec
 TE 300.0 K
 D1 0.01000000 sec
 d11 0.03000000 sec
 d12 0.00002000 sec

==== CHANNEL f1 =====

NUC1 13C
 P1 9.00 usec
 PL1 6.00 dB
 SF01 100.6237954 MHz

==== CHANNEL f2 =====

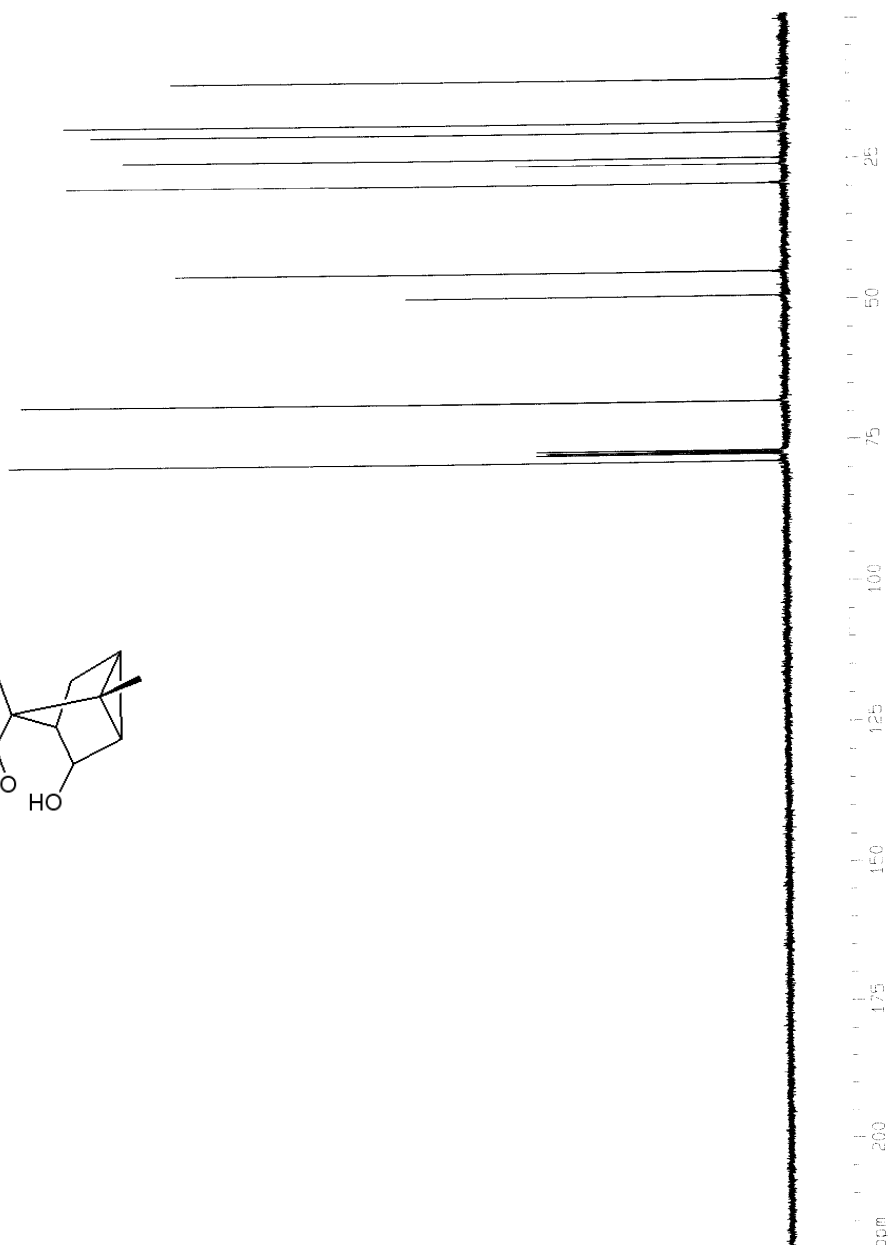
CPDPRG2 waltz16
 NUC2 1H
 PCPD2 80.00 usec
 PL2 0.00 dB
 PL12 19.00 dB
 PL13 19.00 dB
 SF02 400.1316005 MHz

F2 - Processing parameters

SI 32768
 SF 100.6127684 MHz
 WDM EM
 SSB 0
 LB 1.00 Hz
 GB 0
 PC 1.40

1D NMR plot parameters

CX 20.00 cm
 CY 12.50 cm
 F1P 220.000 ppm
 F1 22134.81 Hz
 F2P -1.000 ppm
 F2 -100.64 Hz
 PPMCM 11.05000 ppm/cm
 HZCM 1111.77112 Hz/cm



NV3/6.C8-D1
 proton.k CDC13 [C:\bruker\xwin-nmr] nv 38

```

Current Data Parameters
NAME      NV3816F-2003
EXPNO    1
PROCNO    1

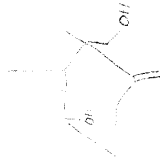
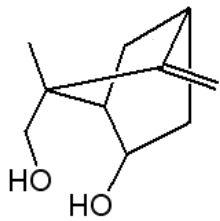
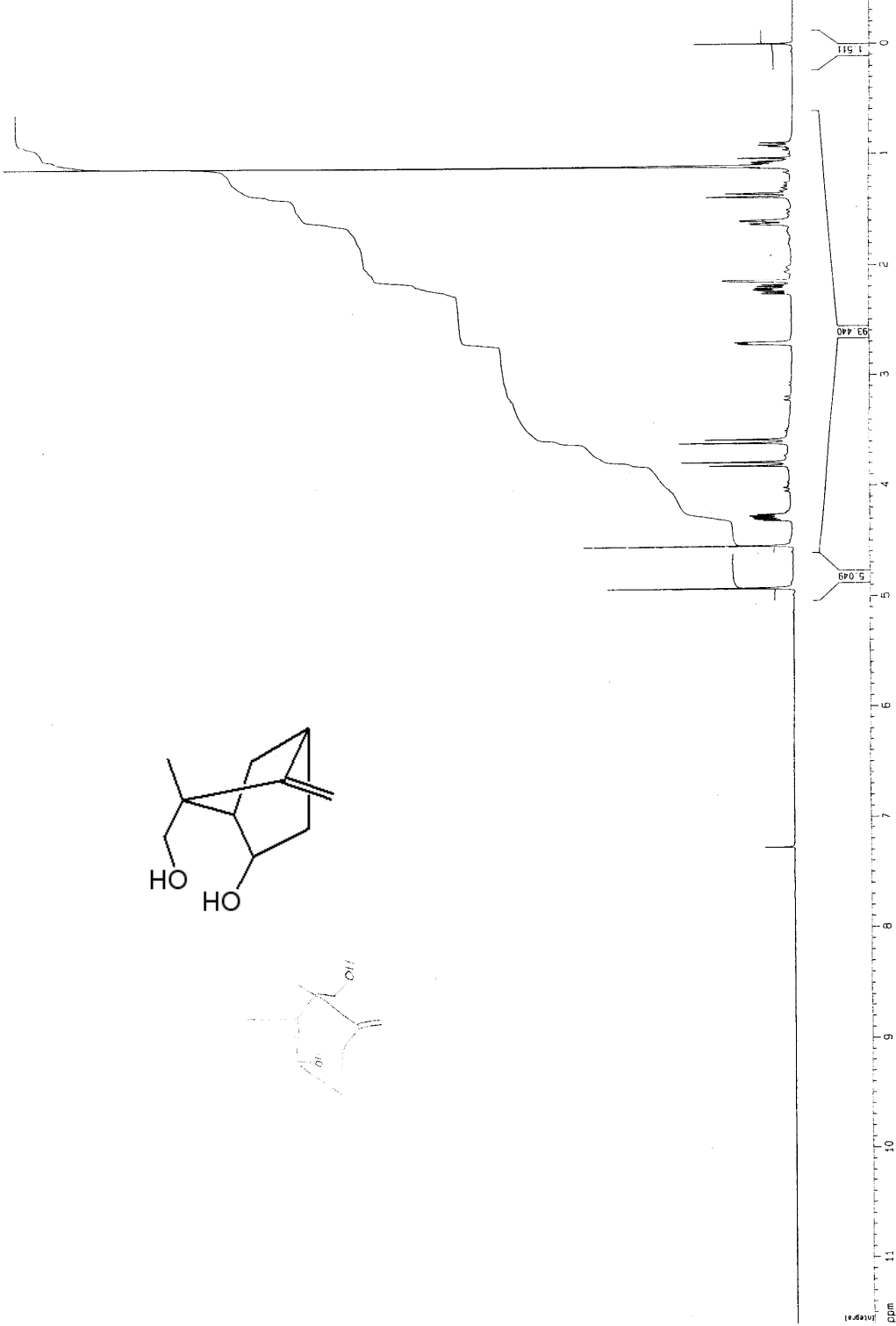
F2 - Acquisition Parameters
Date_     20030926
Time      15:29
Instrum   spect
PROBHD    5 mm QNP
PULPROG   zgpg30
TD        32768
SOLVENT   CDC13
NS         16
DS         2
SWH        7440.426 Hz
FIDRES     0.1600000 Hz
AQ         2.5262095 Sec
RG         128
JM         67.200 usec
DE         6.00 usec
TE         300.0 K
D1         0.10000000 sec

***** CHANNEL f1 *****
NUC1       1H
P1         11.60 usec
PL1        1.00 dB
SFO1       360.1322240 MHz

F2 - Processing parameters
SI         32768
SF         360.1300000 MHz
WDW        EM
SSB        0
LB         0.30 Hz
GB         0
PC         4.00

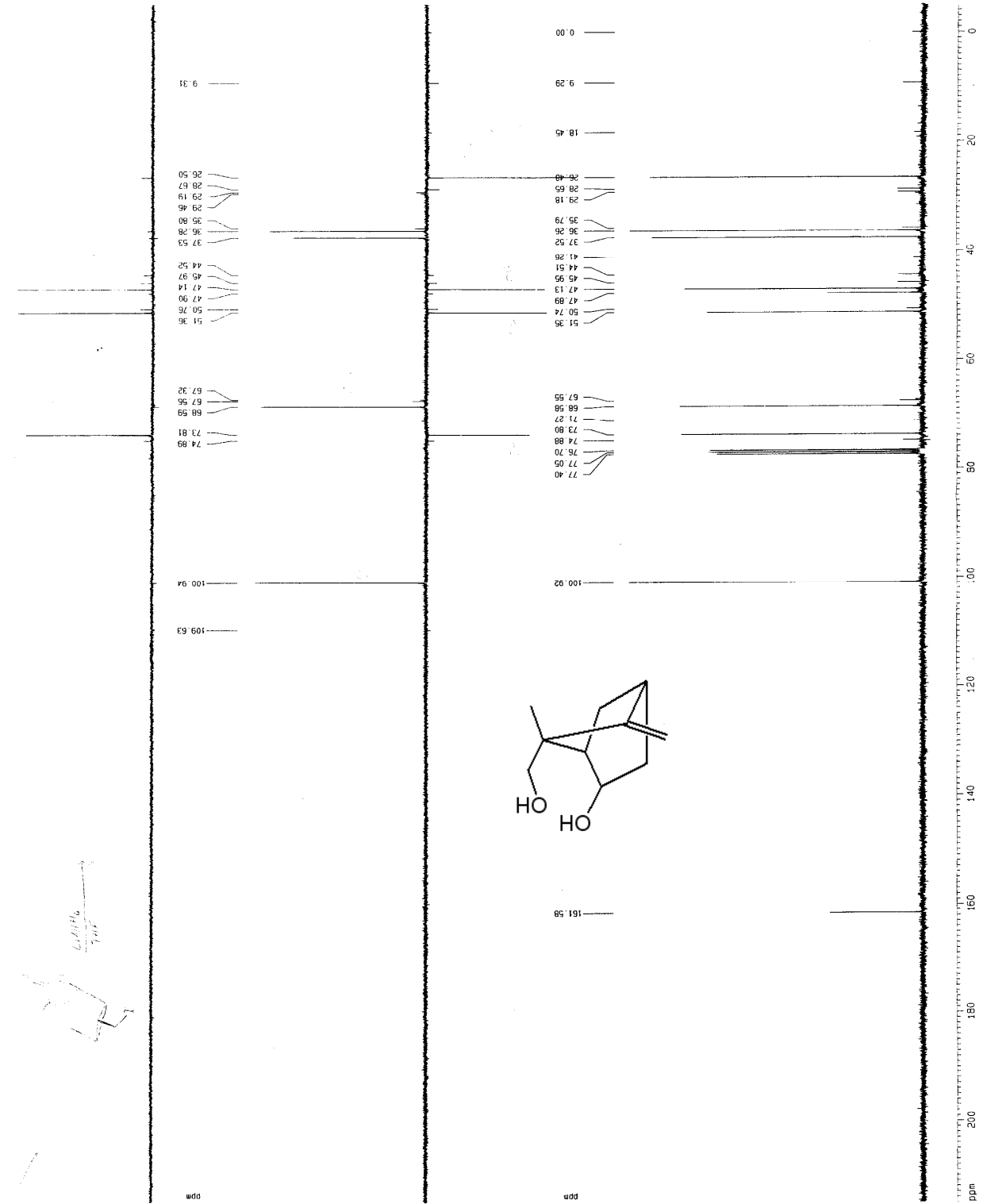
LO NMR P131 parameters
CY         35.00 cm
CX         21.50 cm
F1         11.600 ppm
F2         4177.51 Hz
F3         -0.400 ppm
FE         -144.05 Hz
WDTH       12.990 ppm/cm
AQCN       123.47314 Hz/cm
  
```

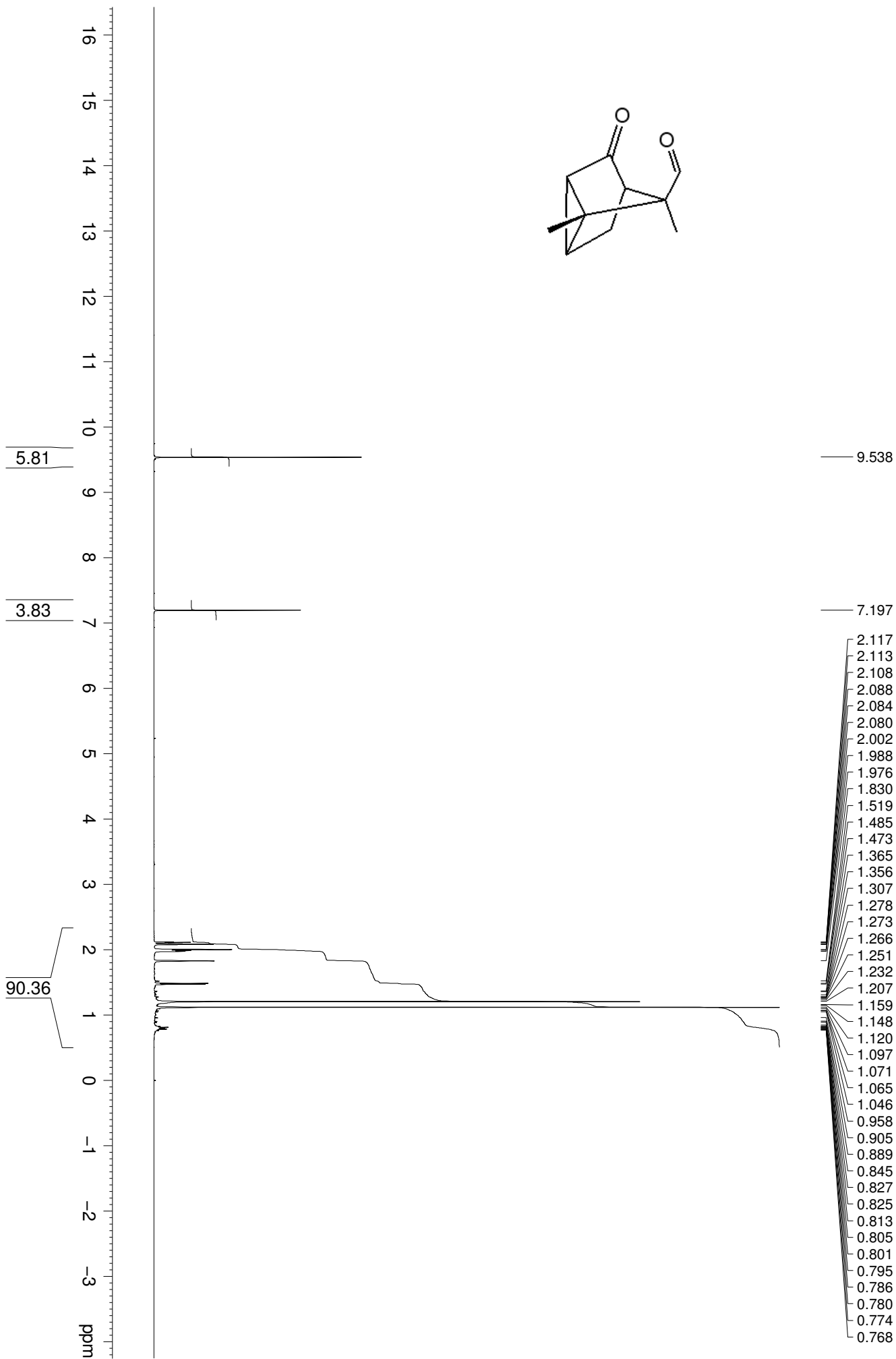
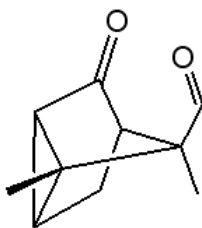
0.996
0.997
0.918
0.923
0.928
1.0375
1.059
1.074
1.074
1.095
1.095
1.1247
1.168
1.188
1.351
1.388
1.593
1.593
1.544
1.598
1.608
1.608
1.618
1.623
1.623
1.675
1.675
1.69
1.69
1.848
1.993
1.993
2.145
2.204
2.289
2.289
2.347
2.500
2.500
2.706
2.706
2.715
2.715
2.1903
2.213
3.186
3.186
3.614
3.614
3.726
3.726
3.790
3.790
3.825
3.825
4.018
4.018
4.492
4.492
4.252
4.252
4.268
4.268
4.272
4.272
4.283
4.283
4.287
4.287
4.292
4.292
4.3015
4.3015
4.3126
4.3126
4.544
4.544



NV3/6.C8-D1
 c13cpdno.k CDC13 (C:\bruker\xwin-nmr) nv 58

Current Data Parameters
 NAME In-Spec26-2003
 EXPNO 4
 PROCNO 1
 F2 - Acquisition Parameters
 Date_ 20030925
 Time 21:56
 INSTRUM AVSBO
 PULPROG 5 mm QNP JH/1
 D 2
 O 65536
 SOLVENT CDCl3
 NS 648
 DS 4
 SWH 27173.912 Hz
 FIDRES 0.414641 Hz
 AQ 1.205924 sec
 RG 14956.5
 SK 400 usbc
 TE 300.0 K
 D1 0.01000000 sec
 d11 0.03000000 sec
 d12 0.00020000 sec
 ===== CHANNEL f1 =====
 NUC1 13C
 P1 8.50 usbc
 PL1 6.00 dB
 SFO1 90.5646660 MHz
 ===== CHANNEL f2 =====
 CPDPRG2 waltz16
 NUC2 1H
 P2 8.00 usbc
 PL2 1.00 dB
 PL12 17.77 dB
 PL13 120.00 dB
 SFO2 360.1314465 MHz
 F2 - Processing parameters
 SI 32768
 SF 90.5647689 MHz
 KW 64
 EN 64
 SSB 0
 LB 1.00 Hz
 GB 0
 PC 1.40
 1D NMR plot parameters
 CY 35.00 cm
 CX 8.70 cm
 F1 215.000 ppm
 F1 19.66927 Hz
 F2 -5.000 ppm
 F2 -462.77 Hz
 PRGM 628071 ppm/cm
 ACQ 589.20128 Hz/cm





VV2-8-2

210.16
204.23

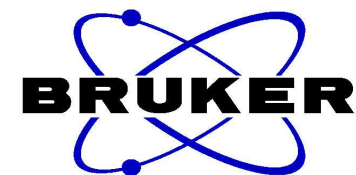
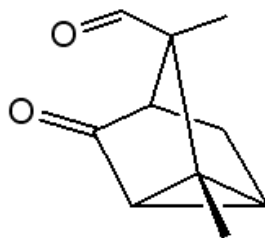
77.36
77.24
77.04
76.72

58.39

48.13

35.01
30.40
27.56
25.87

11.40
11.29



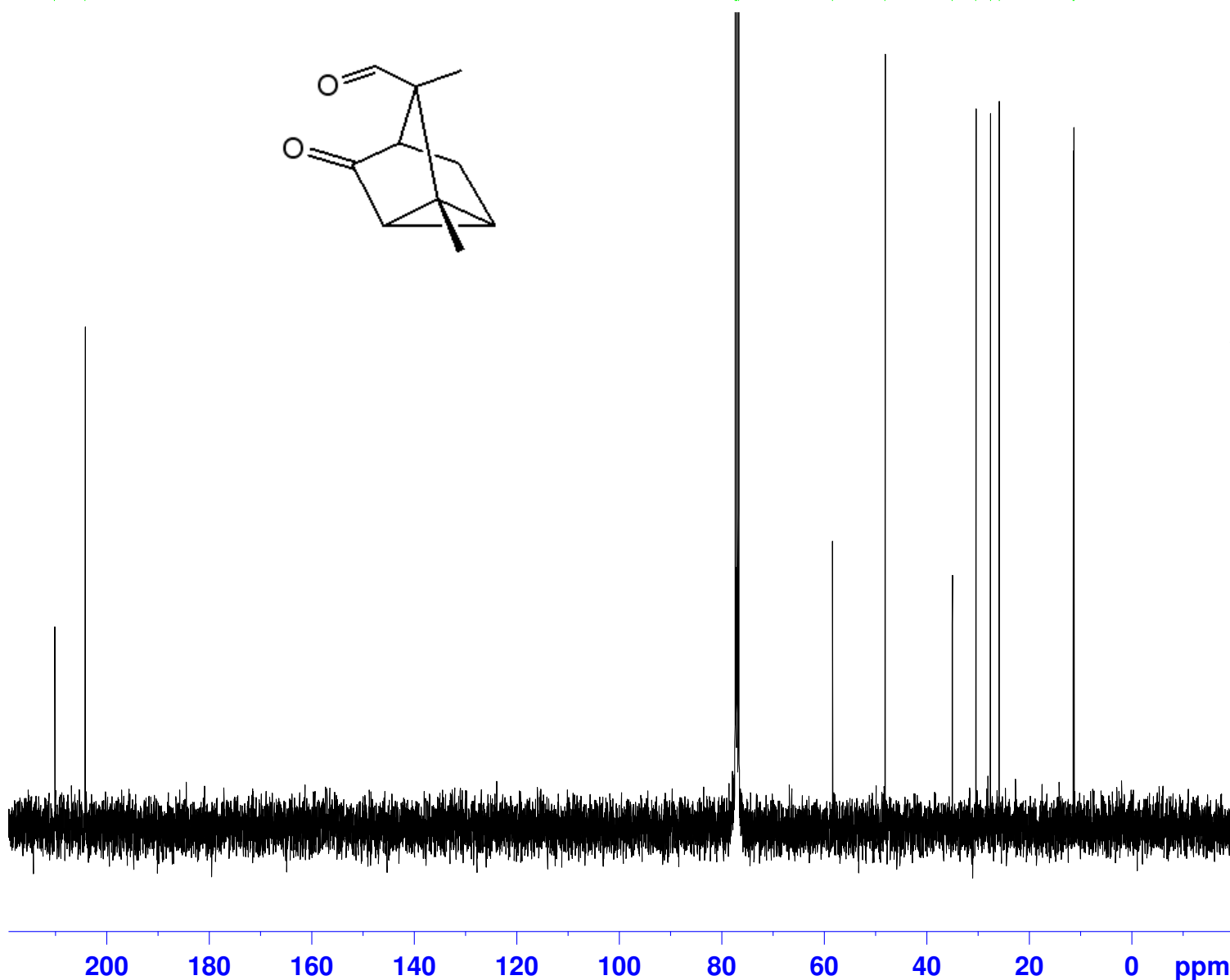
Current Data Parameters
 NAME VV130402
 EXPNO 30
 PROCNO 1

F2 - Acquisition Parameters
 Date_ 20130402
 Time 19.22
 INSTRUM DPX400
 PROBHD 5 mm QNP 1H/13
 PULPROG zgpg30
 TD 65536
 SOLVENT CDCl3
 NS 1024
 DS 4
 SWH 23980.814 Hz
 FIDRES 0.365918 Hz
 AQ 1.3664756 sec
 RG 812.7
 DW 20.850 usec
 DE 6.00 usec
 TE 293.2 K
 D1 2.0000000 sec
 d11 0.0300000 sec
 DELTA 1.89999998 sec
 TD0 1

==== CHANNEL f1 =====
 NUC1 13C
 P1 8.50 usec
 PL1 -2.60 dB
 SFO1 100.6228298 MHz

==== CHANNEL f2 =====
 CPDPRG2 waltz16
 NUC2 1H
 PCPD2 80.00 usec
 PL2 -1.50 dB
 PL12 17.50 dB
 PL13 17.50 dB
 SFO2 400.1316005 MHz

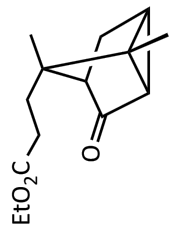
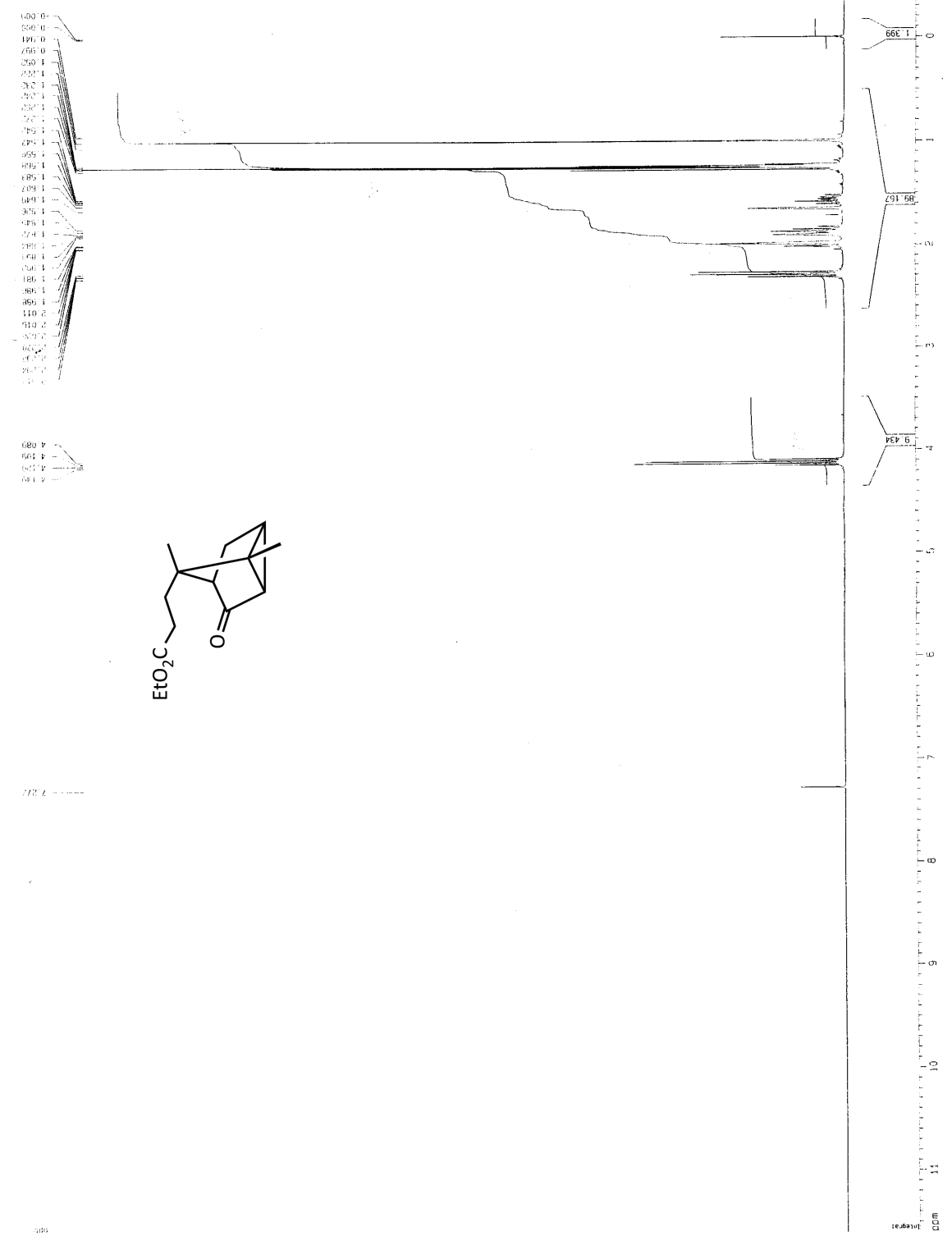
F2 - Processing parameters
 SI 32768
 SF 100.6127690 MHz
 WDW EM
 SSB 0
 LB 1.00 Hz
 GB 0
 PC 1.40



NV3/74
 proton.k CDC13 {C:\bruker\Xwin-nmr} nv 12

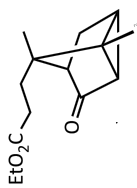


Current: 2583 Parameters
 NAME 0-MS-11-2024
 EXPNO 1
 PROCNO 1
 F2 - Acquisition Parameters
 Date_ 20080818
 Time 11:32
 INSTRUM spect
 PULPROG zgpg30
 GAMMA 5 ms GPC 1H:1
 PULPROG 32786
 TD 65536
 SOLVENT CDC13
 NS 128
 DS 4
 SWH 7440.275 Hz
 FIDRES 0.227065 Hz
 AQ 2.202095 sec
 RG 228.1
 CW 67.200 usec
 PC 15.00 usec
 RE 3.00 usec
 DE 1.00 usec
 DT 0.1000000 sec
 ===== CHANNEL f1 =====
 NUC1 1H
 P1 11.60 usec
 PL1 1.00 dB
 SFO1 360.132240 MHz
 F2 - Processing parameters
 SI 16384
 SF 360.1300006 MHz
 MDW 64
 SSB 0
 GB 0
 PC 4.00
 ID NMR 010t parameters
 CX 35.00 cm
 CY 21.50 cm
 CZ 11.800 cm
 F1 410.00 Hz
 F2 -144.05 Hz
 PRGCM 0.34286 ppm/cm
 -DCM 123.47314 Hz/cm



7.217

588



NV3/74
 c13cpdno.k CDC13 (C:\bruker\Xwin-nmr) nv 53

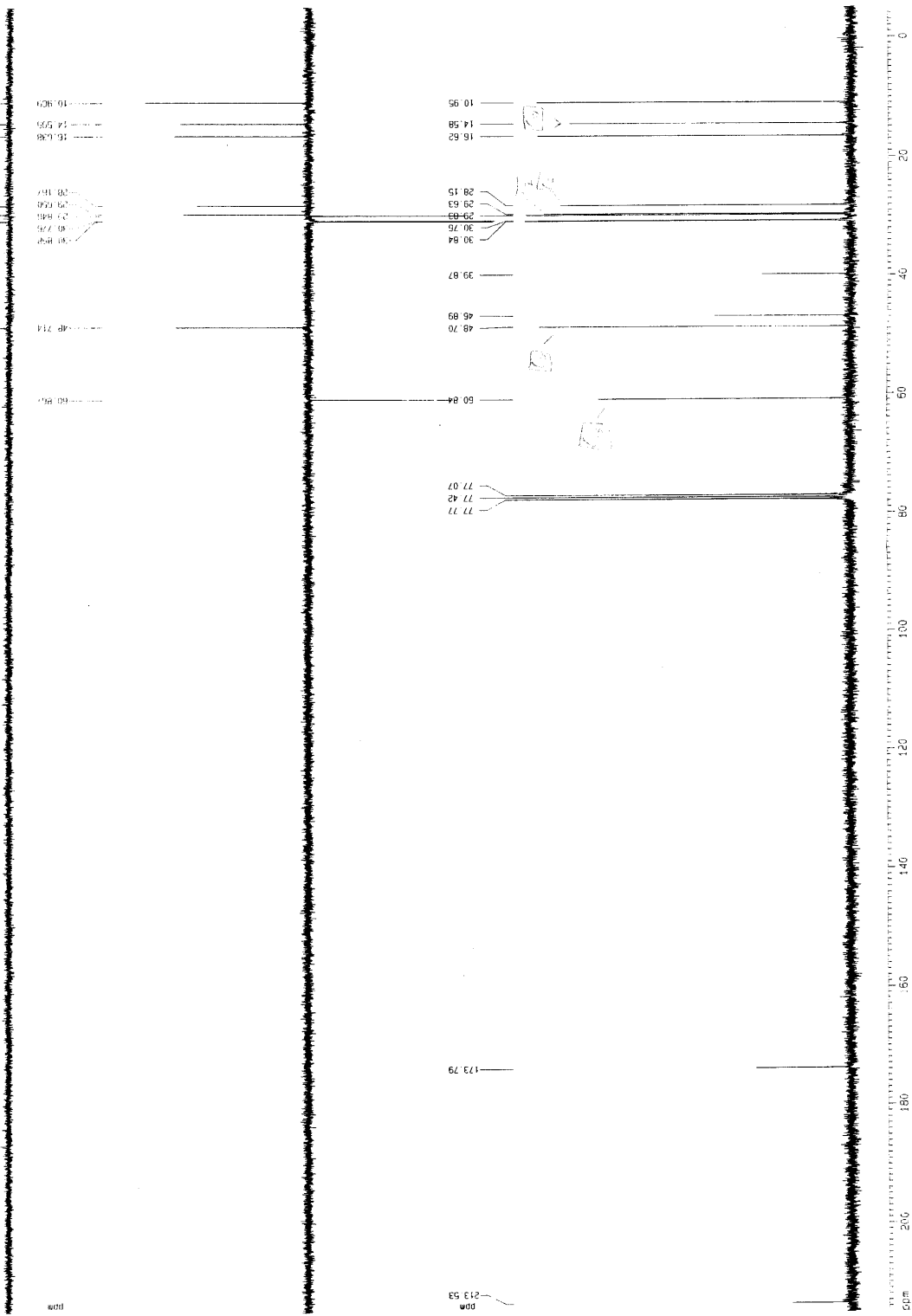
```

===== CHANNEL F1 =====
NUC1 13C
P1 1.00000000
SFO1 90.5626000 MHz

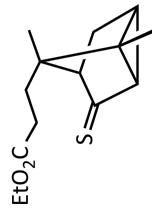
===== CHANNEL F2 =====
CPDPRG2 waltz16
NUC2 1H
P2 0.00000000
SFO2 400.1460000 MHz

===== Processing parameters =====
SI 32768
SF 90.5627000 MHz
AQ 0.00000000
RG 327.68
WDW EM
SSB 0
GB 0
PC 1.00000000
DC 0
SC 1.40

===== 1D NMR plot parameters =====
CA 35.00 cm
C1 0.00000000
F1 218.0000000 cm
F2 15.6327000 Hz
F3 45.0000000 cm
F4 -42.7700000 Hz
PC2 6.28271000/cm
-SCN 5898920111 Hz/cm
  
```



AAB/40/A
 PROTON CDC13 (C:\u) General 5



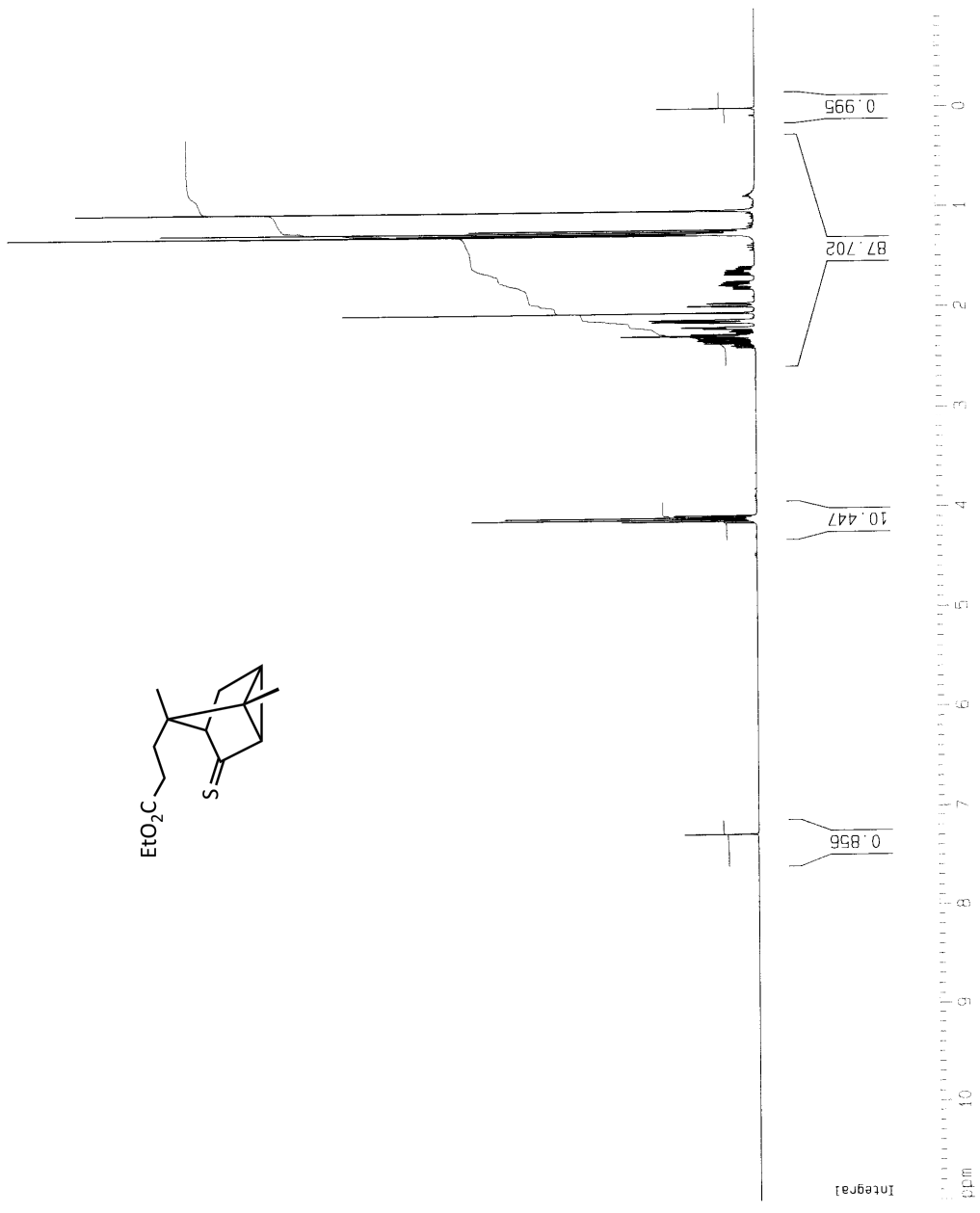
Current Data Parameters
 NAME Jan28-2005-4.5
 EXPNO 1
 PROCNO 1

F2 - Acquisition Parameters
 Date_ 20050129
 Time 14.48
 INSTRUM spect
 PROBHD 5 mm QNP 1H/1
 PULPROG zg30
 TO 65536
 SOLVENT CDC13
 NS 16
 DS 2
 SWH 8278.146 Hz
 FIDRES 0.126314 Hz
 AQ 3.9584243 sec
 RG 101.6
 DW 60.400 usec
 DE 5.00 usec
 TE 300.0 K
 D1 1.00000000 sec

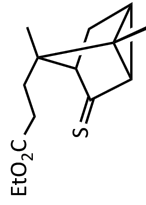
===== CHANNEL f1 =====
 NUC1 1H
 P1 10.00 usec
 PL1 0.00 dB
 SF01 400.1324710 MHz

F2 - Processing parameters
 SI 32768
 SF 400.1300110 MHz
 WDW EM
 SSB 0
 LB 0.30 Hz
 GB 0
 PC 6.00

1D NMR plot parameters
 CX 20.00 cm
 CY 12.50 cm
 F1P 11.000 ppm
 F1 4401.43 Hz
 F2P -1.000 ppm
 F2 -400.13 Hz
 PPMCM 0.60000 ppm/cm
 HZCM 240.07800 Hz/cm



AAB/40/A
C13CPDONLY_kc1 CDC13 (C:\u\ General 5



Current Data Parameters
NAME Jan28-2005-4.5
EXPNO 2
PROCNO 1

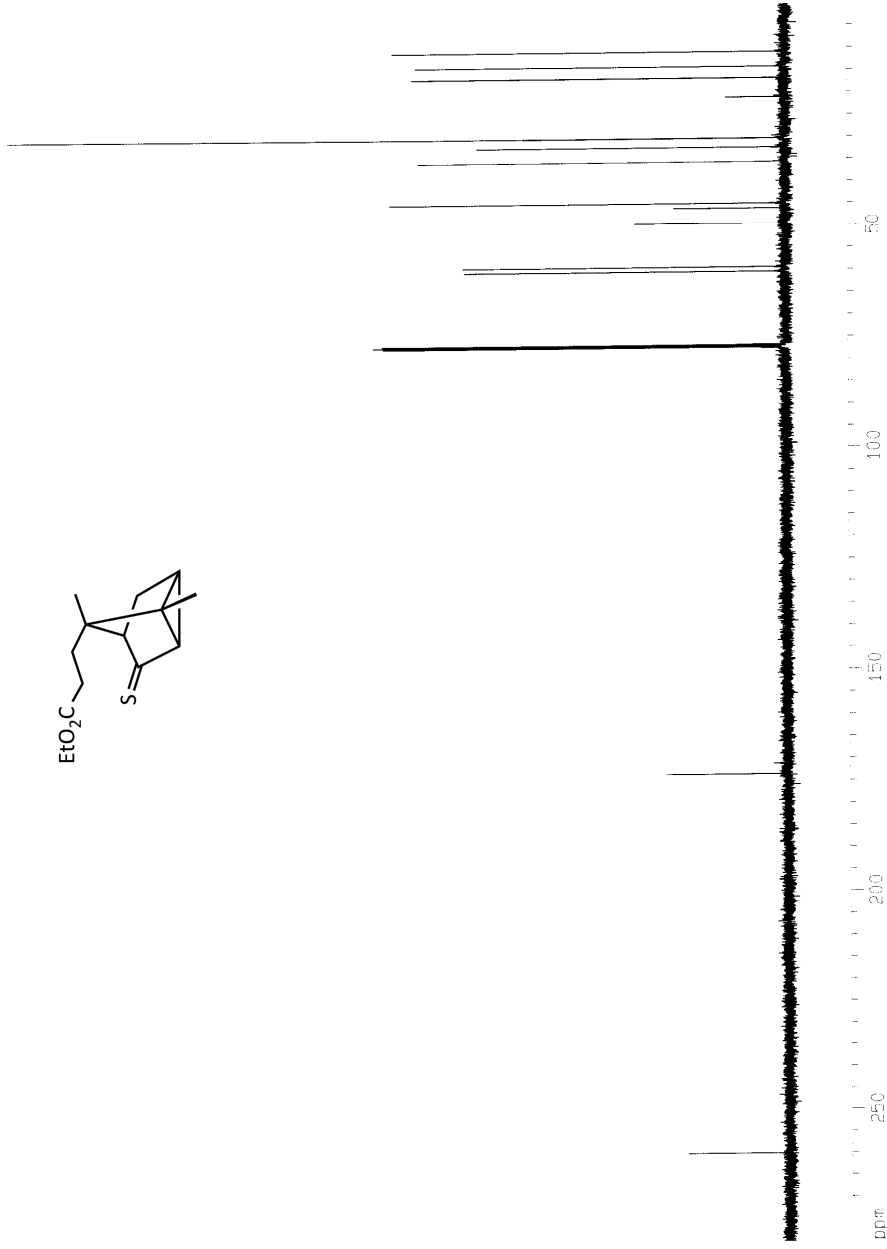
F2 - Acquisition Parameters
Date_ 20050129
Time 15.00
INSTRUM spect
PROBHD 5 mm QNP 1H/1
PULPROG zgpg30
TD 65536
SOLVENT CDCl3
NS 640
DS 4
SWH 31250.000 Hz
FIDRES 0.476837 Hz
AQ 1.0488259 sec
RG 1625.5
DM 16.000 usec
DE 6.00 usec
TE 300.0 K
D1 0.01000000 sec
d11 0.03000000 sec
d12 0.00002000 sec

===== CHANNEL f1 =====
NUC1 13C
P1 9.00 usec
PL1 6.00 dB
SF01 100.626148 MHz

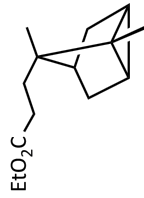
===== CHANNEL f2 =====
CPDPRG2 waltz16
NUC2 1H
PCPD2 80.00 usec
PL2 0.00 dB
PL12 17.85 dB
PL13 19.00 dB
SF02 400.1316005 MHz

F2 - Processing parameters
SI 32768
SF 100.6127723 MHz
WDW EM
SSB 0
LB 1.00 Hz
GB 0
PC 1.40

1D NMR plot parameters
CX 20.00 cm
CY 12.50 cm
F1P 280.000 ppm
F1 28171.58 Hz
F2P 0.000 ppm
F2 0.00 Hz
PRMCM 14.00000 ppm/cm
HZCM 1408.57874 Hz/cm



AAB/44/A
PROTON CDC13 (C:\u) General 2



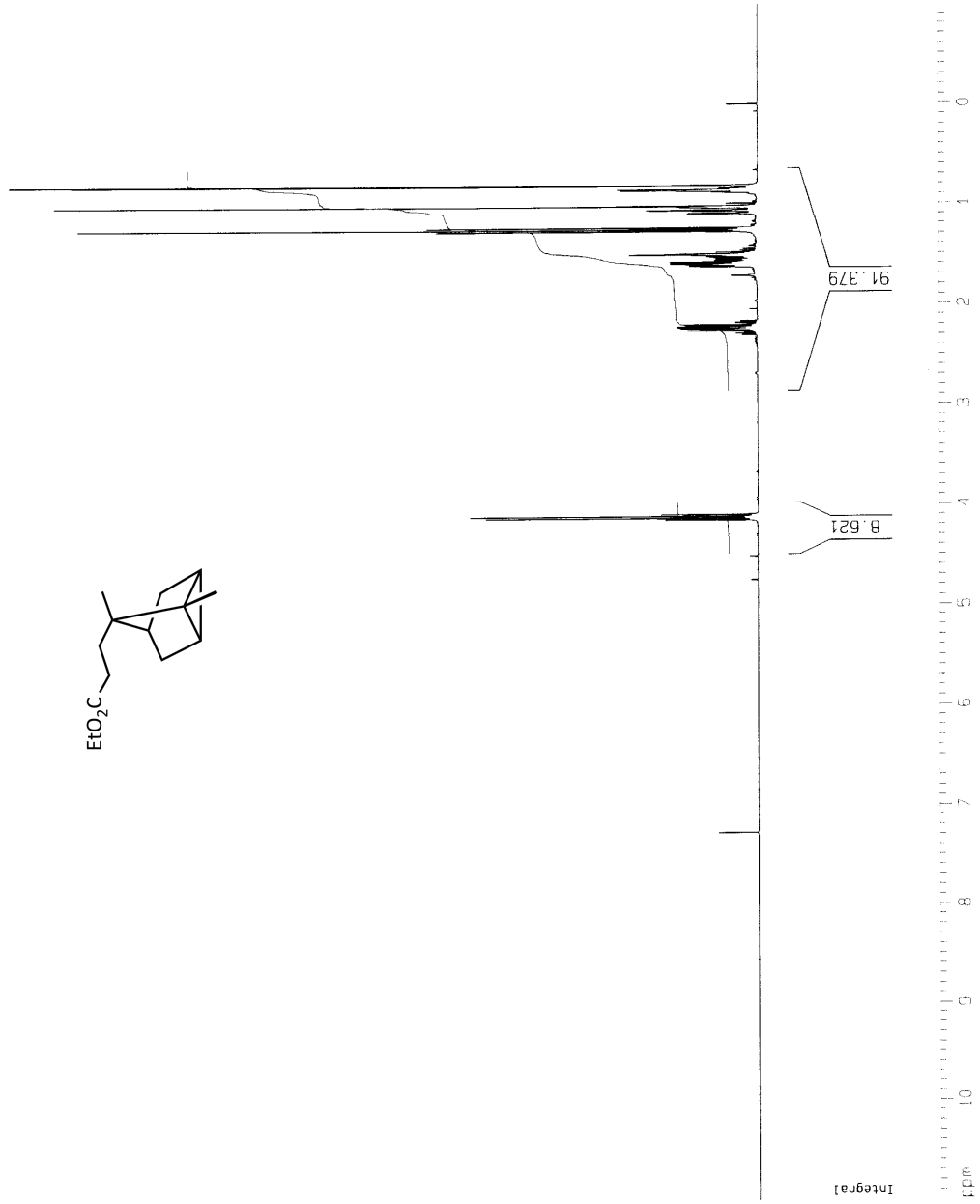
Current Data Parameters
NAME Feb08-2005-4.2
EXPNO 1
PROCNO 1

F2 - Acquisition Parameters
Date_ 20050208
Time 16.03
INSTRUM spect
PROBHD 5 mm GNP 1H/1
PULPROG zg30
TD 65536
SOLVENT CDCl3
NS 16
DS 2
SWH 8278.146 Hz
FIDRES 0.126314 Hz
AQ 3.9584243 sec
RG 50.8
DW 60.400 usec
DE 6.00 usec
TE 300.0 K
D1 1.60000000 sec

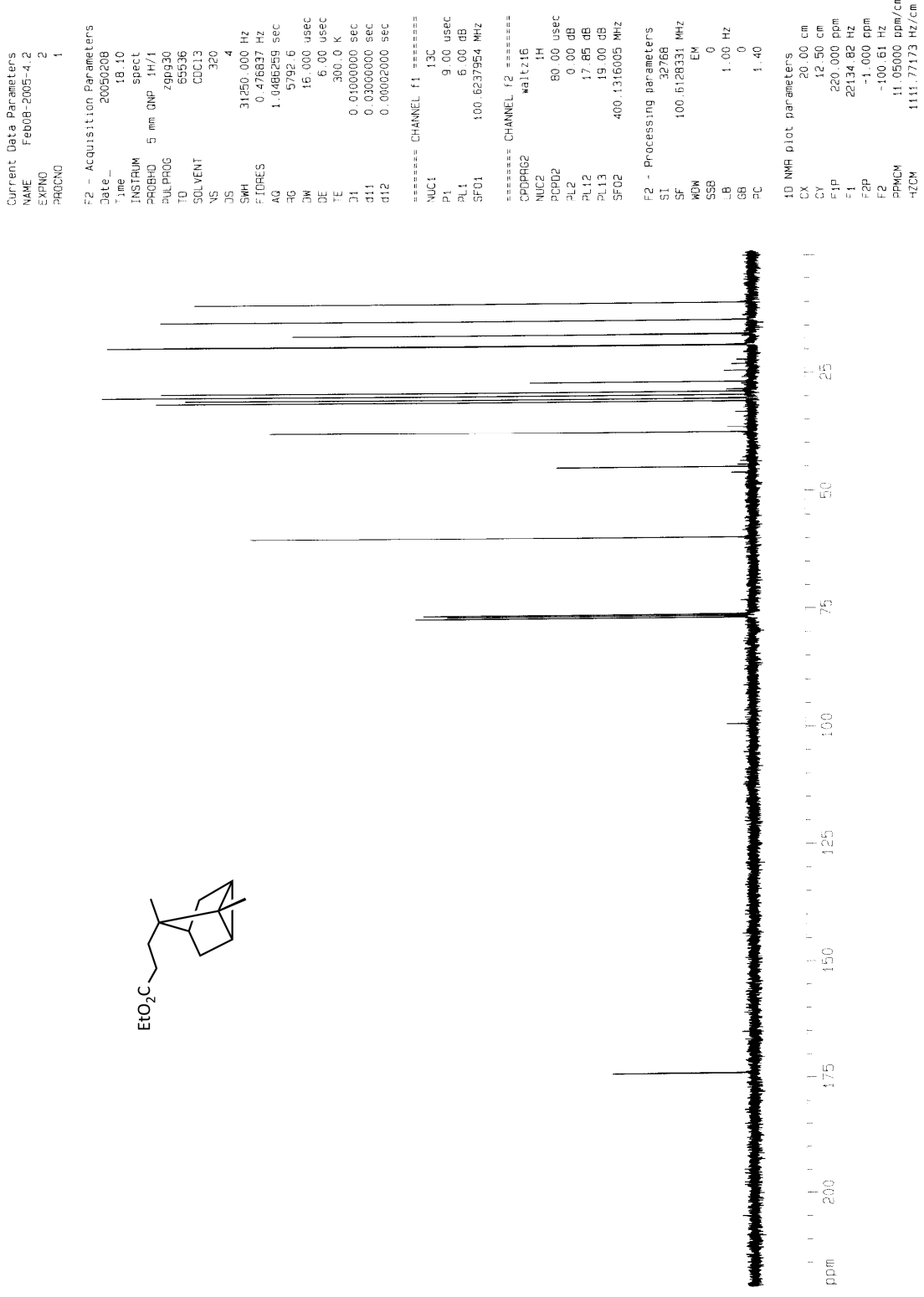
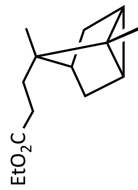
===== CHANNEL f1 =====
NUC1 1H
P1 10.00 usec
PL1 0.00 dB
SF01 400.1324710 MHz

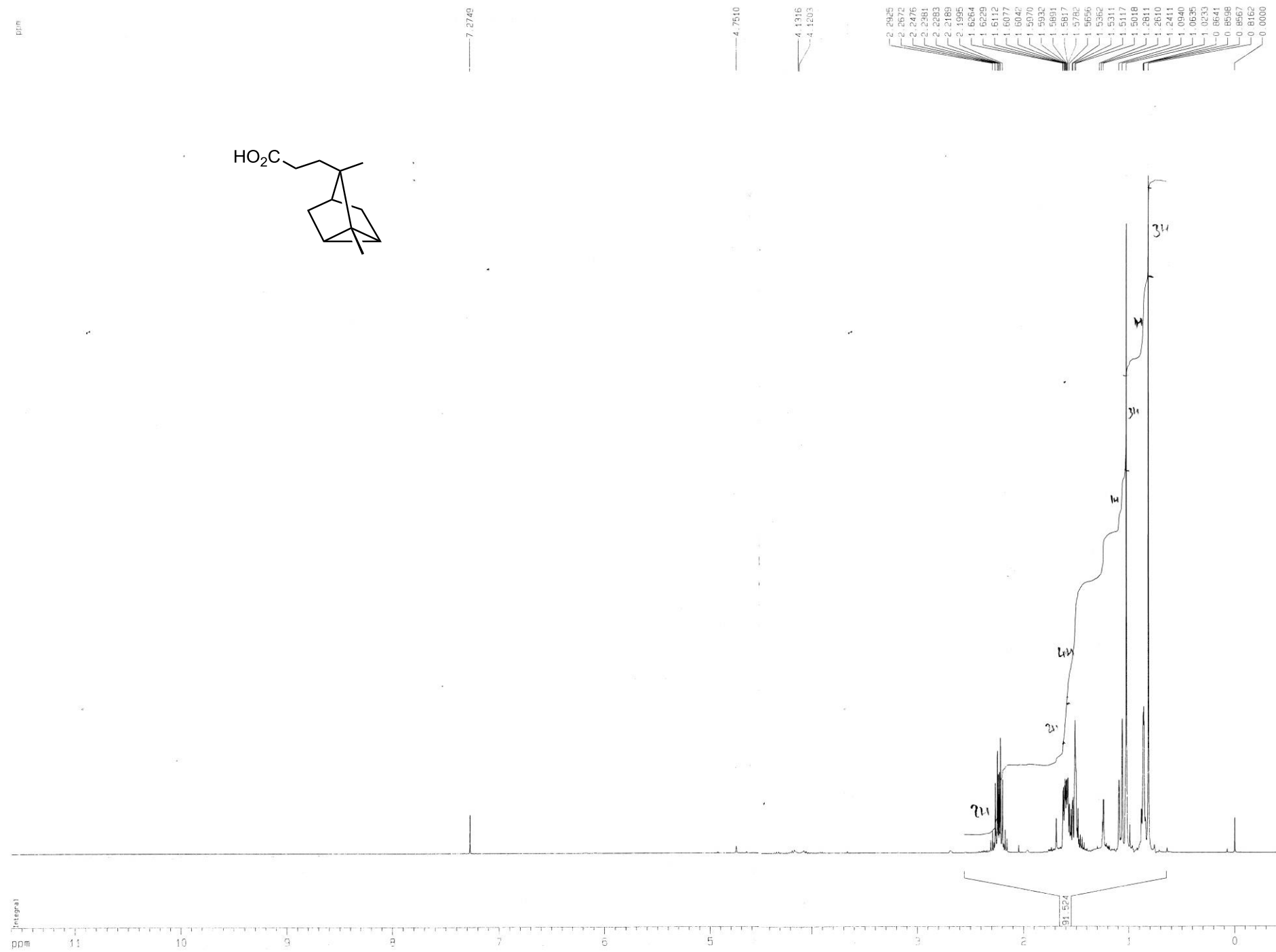
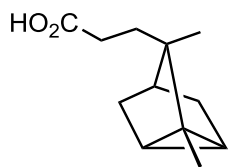
F2 - Processing parameters
SI 32768
SF 400.1300103 MHz
WDW EM
SSB 0
LB 0.30 Hz
GB 0
PC 6.00

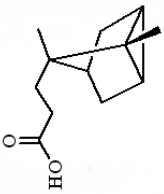
ID NMR plot parameters
CX 20.00 cm
CY 12.50 cm
F1P 11.000 ppm
F1 4401.43 Hz
F2P -1.000 ppm
F2 -400.13 Hz
PPMCM 0.60000 ppm/cm
HZCM 240.07800 Hz/cm



AAB/44/A
 C13CPDONLY_kc1 CDC13 [C:\u\ General 2







```

Current Data Parameters
NAME      1C-13C-2002
EXPNO     1
PROCNO    1
PROCNAME  1
F2 - Acquisition Parameters
Date_    20020223
Time     8:38
INSTRUM  zgpg30
PROBHD   5 mm QNP 1H/1
PULPROG  zgpg30
AQ       0.25683
RG        640
AQ2       0.00000
RG2        640
SI        4
SF        271.133 MHz
NUC1      13C
NUC2      13C
P1        8.50 usec
PC        0.00 usec
PL1       0.00 dB
PL2       0.00 dB
SFO1      90.5047500 MHz
===== CHANNEL f1 =====
NUC1      13C
NUC2      13C
P1        8.50 usec
PC        0.00 usec
PL1       0.00 dB
PL2       0.00 dB
SFO1      90.5047500 MHz
===== CHANNEL f2 =====
CPDPRG2   waltz16
NAME      1H
NUC1      1H
PC        80.00 usec
PL1       1.00 dB
PL2       1.00 dB
PL3       1.00 dB
SFO1      400.1462000 MHz
===== Processing parameters =====
SI        4
SF        360.1314450 MHz
SFO2      337.768
RG        640
PC        90.5047500 MHz
RG2       0
AQ2       0.00000
SI        1
SFO1      1.00 MHz
PC        1.40
===== ICP1 parameters =====
CY       35.00 cm
CX       8.70 cm
F1P      215.000 dBm
F1       19.46927 MHz
F2P      -5.500 dBm
F2       -95.77 Hz
===== RDC parameters =====
RDC1    5.28871 dBm/cm
RDC2    5.692111 Hz/cm
    
```

