

Supporting Information

Synthesis of novel bimetallic nickel cobalt telluride nanotubes on nickel foam for high-performance hybrid supercapacitors

Shiyi Zhang^{a,b}, Dongzhi Yang^{a,b*}, Ming Zhang^a, Yaxin Liu^b, Ting Xu^b, Jing Yang^c, Zhong-Zhen Yu^{a,b,d*}

^a State Key Laboratory of Organic-Inorganic Composites, College of Materials Science and Engineering, Beijing University of Chemical Technology, Beijing 100029, China

^b Beijing Key Laboratory on Preparation and Processing of Novel Polymer Materials, Beijing University of Chemical Technology, Beijing 100029, China

^c School of Materials Science & Engineering, Sun Yat-Sen University, Xingang West Road 135, Guangzhou 510275, China

^d Beijing Advanced Innovation Center for Soft Matter Science and Engineering, Beijing University of Chemical Technology, Beijing 100029, China

E-mail: yangdz@mail.buct.edu.cn (D. Yang); yuzz@mail.buct.edu.cn (Z.-Z. Yu)

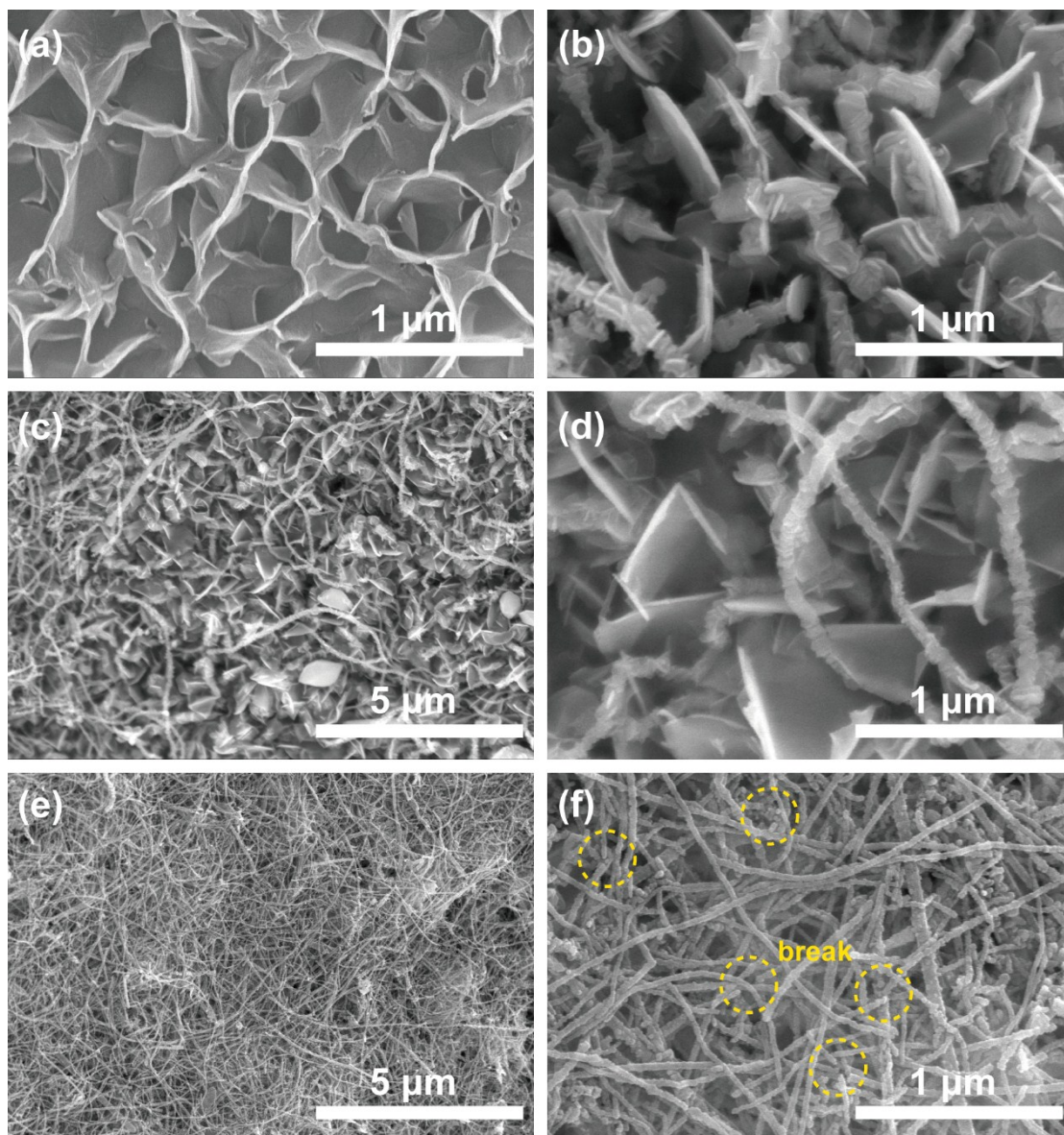


Fig. S1. SEM images of (a) Ni-Co precursor, (b) RS-8h, (c, d) RS-10 h. (e, f) RS-15 h.

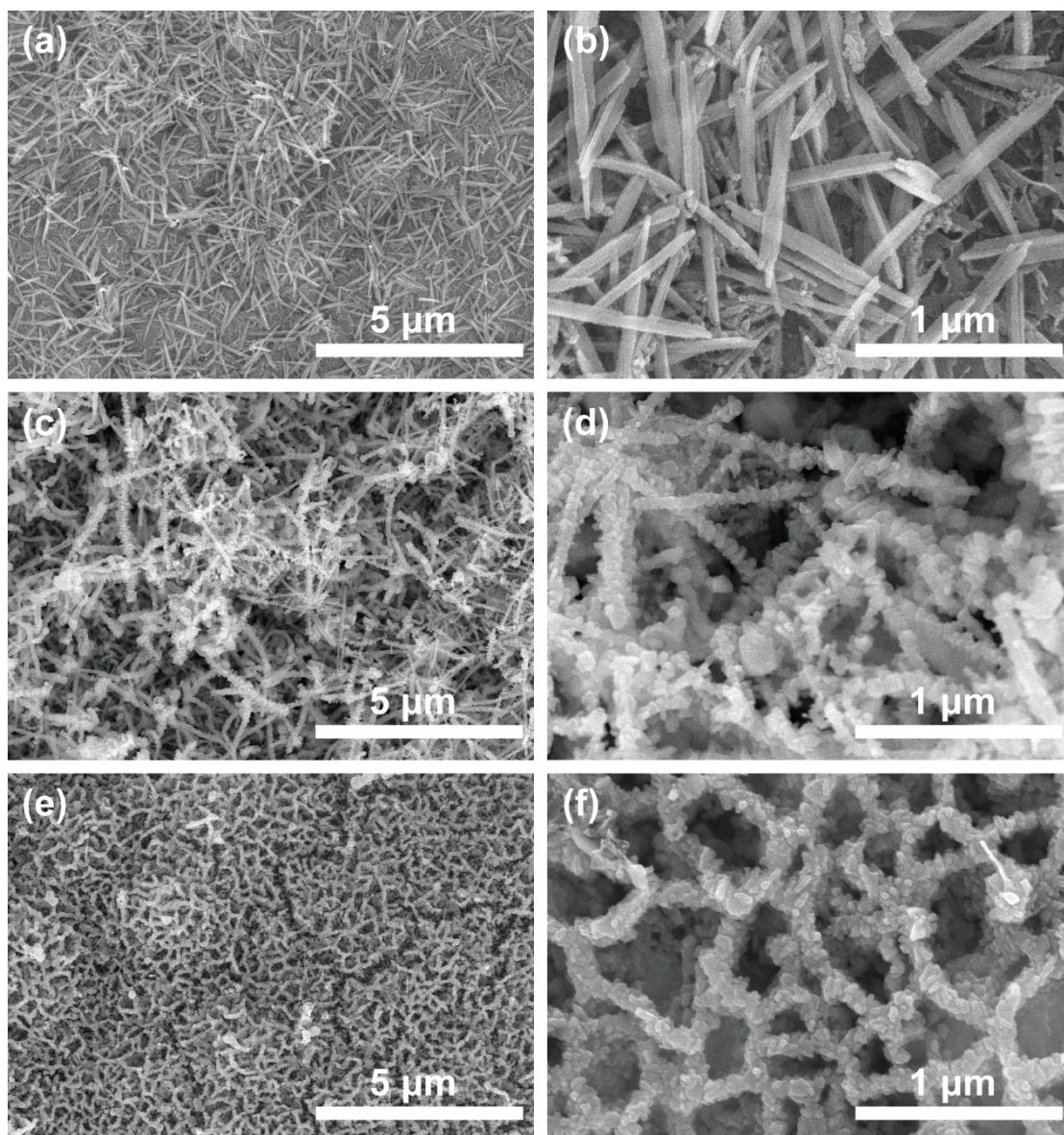


Fig. S2. SEM images of nickel cobalt telluride with different reaction concentration of Na_2TeO_3 (a, b) RS-0.5 mM, (c, d) RS-3 mM, (e, f) RS-5 mM.

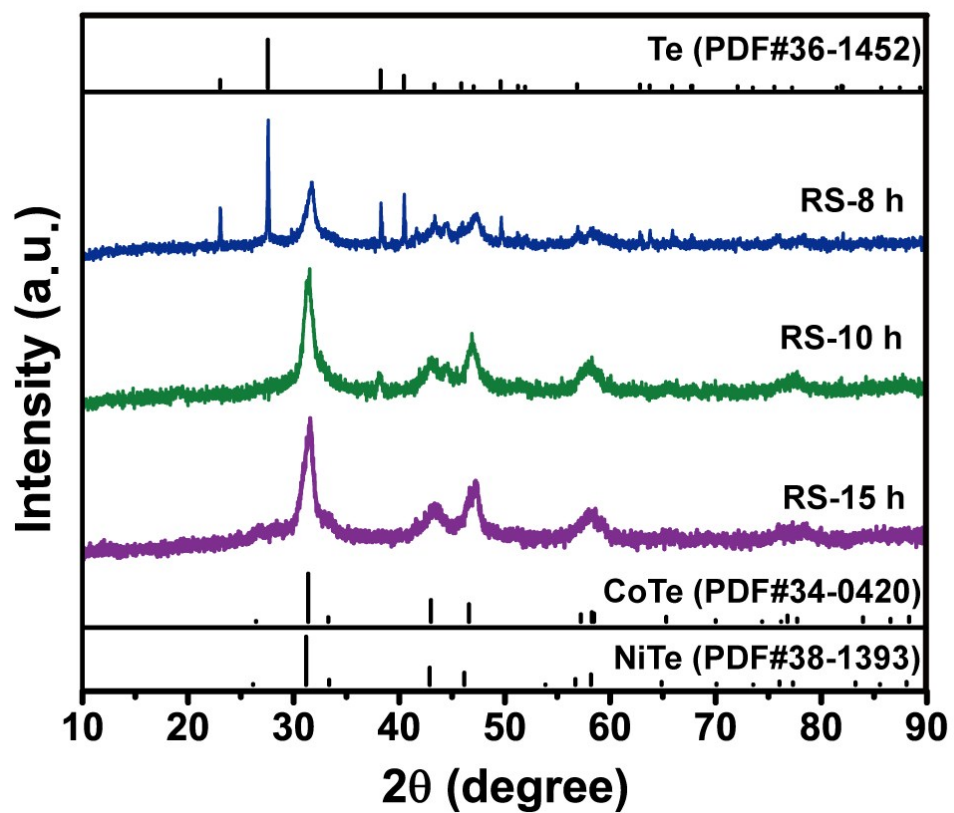


Fig. S3. XRD patterns of nickel cobalt tellurides with different reaction times.

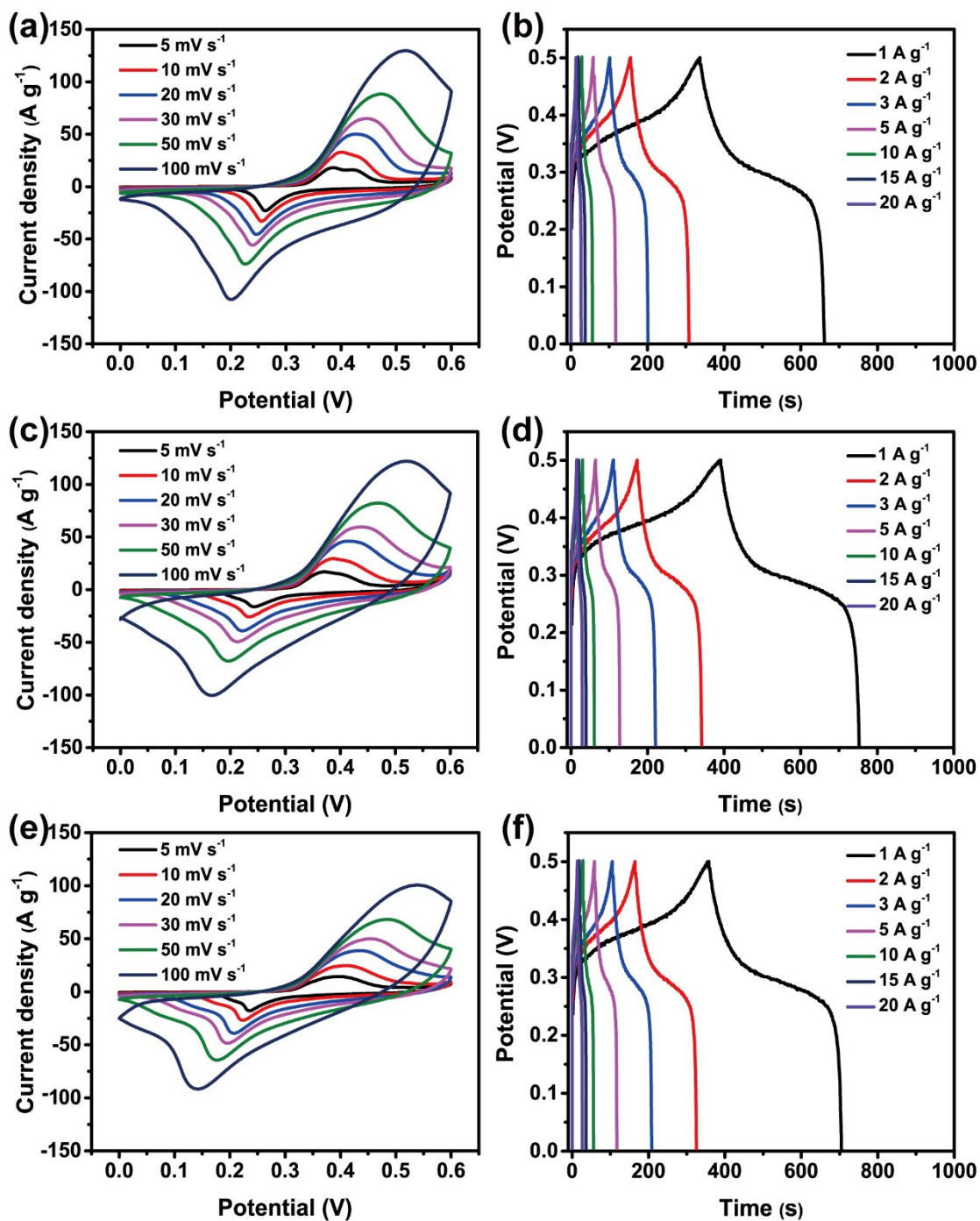


Fig. S4. CV and GCD curves of (a, b) RS-8 h, (c, d) RS-10 h, (e, f) RS-15 h.

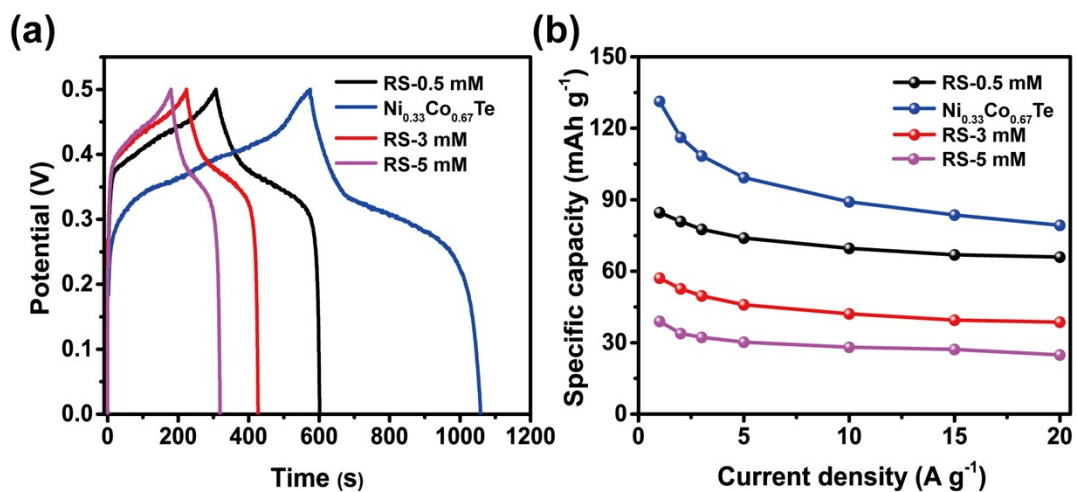


Fig. S5. (a) GCD curves of nickel cobalt telluride with different reaction concentration of Na_2TeO_3 . (b) Specific capacities of different electrodes at various current densities.

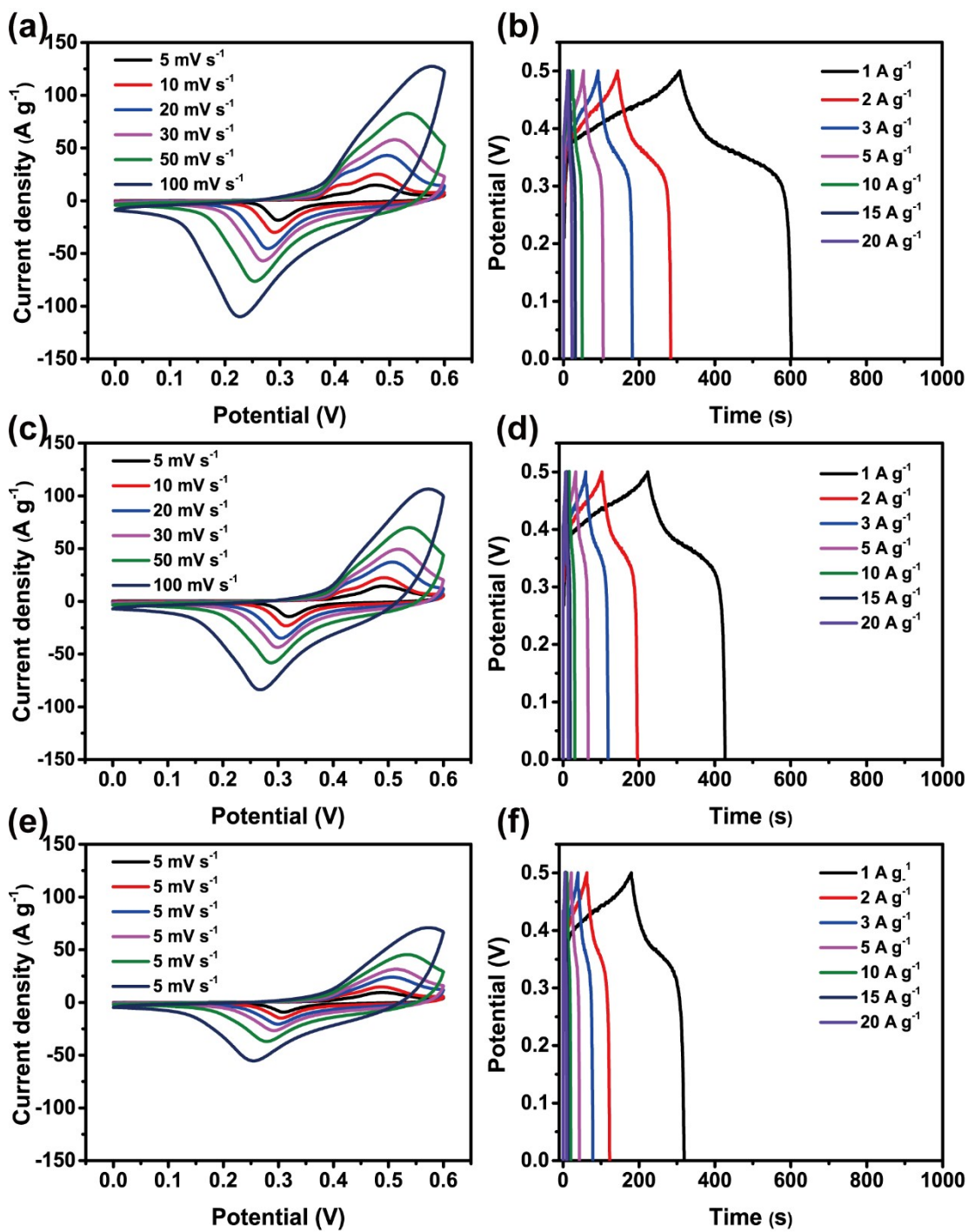


Fig. S6. CV and GCD curves of (a, b) RS-0.5 mM, (c, d) RS-3 mM, (e, f) RS-5 mM.

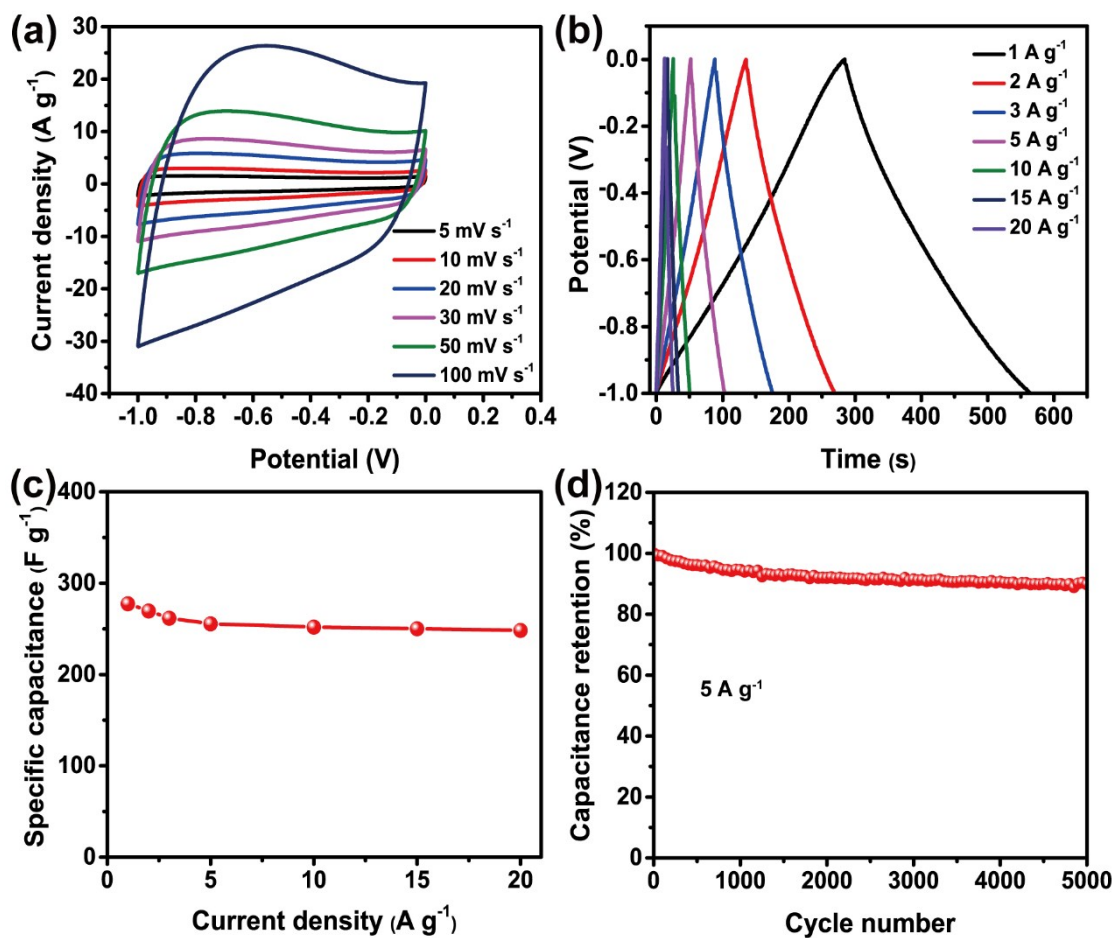


Fig. S7. (a) CV curves of AC at different scans. (b) GCD curves of AC at different current densities, and (c) corresponding discharge specific capacitance. (d) Cycling performance of the AC electrode at the current density of 5 A g^{-1} .

Table S1. Experimental parameters for different samples

Samples	Concentration of Na ₂ TeO ₃ (mmol L ⁻¹)	Time (h)
Ni _{0.33} Co _{0.67} Te	1	12
RS-8 h	1	8
RS-10 h	1	10
RS-15 h	1	15
RS-0.5 mM	0.5	12
RS-3 mM	3	12
RS-5 mM	5	12