

Motion Sensors from Conducting Polymer–Metal Schottky Contact

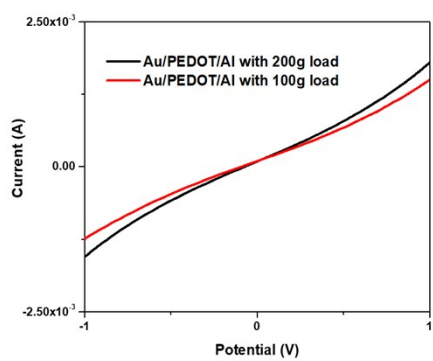
Yang Zhou, Jian Fang, Yan Zhao, Hongxia Wang, Hua Zhou, Guilong Yan, Tong Lin*

Institute for Frontier Materials, Deakin University, Geelong VIC 3216, Australia

(Corresponding Author's email: tong.lin@deakin.edu.au)

Electronic Supplementary Information

(a)



(b)

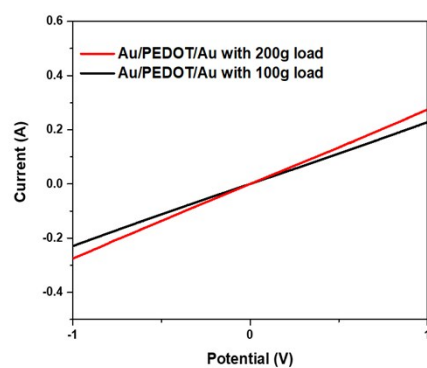


Figure S1: I–V plots for (a) Au/PEDOT/Al and (b) Au/PEDOT/Au devices with 100 and 200 grams load.

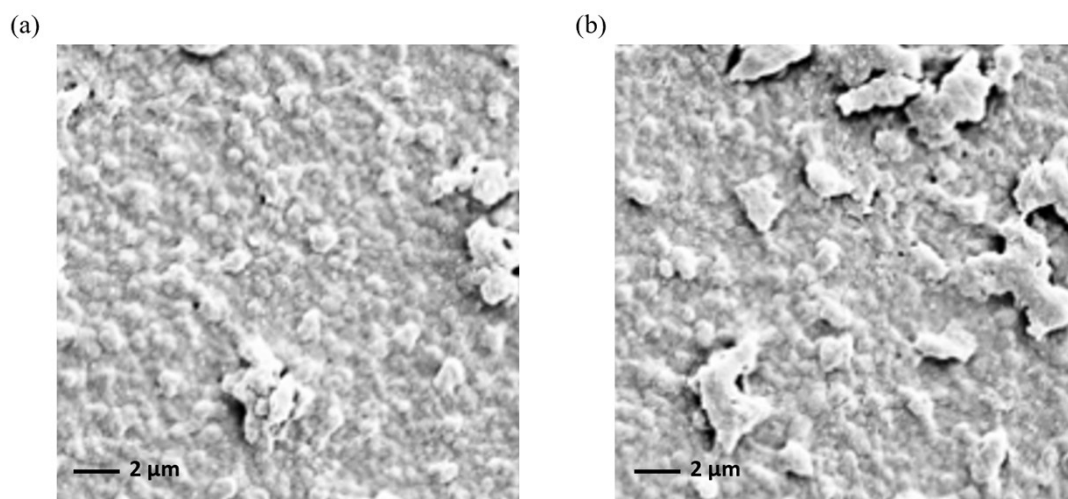


Figure S2. SEM images of two different locations on the same PEDOT film: (a) location A and (b) location B.

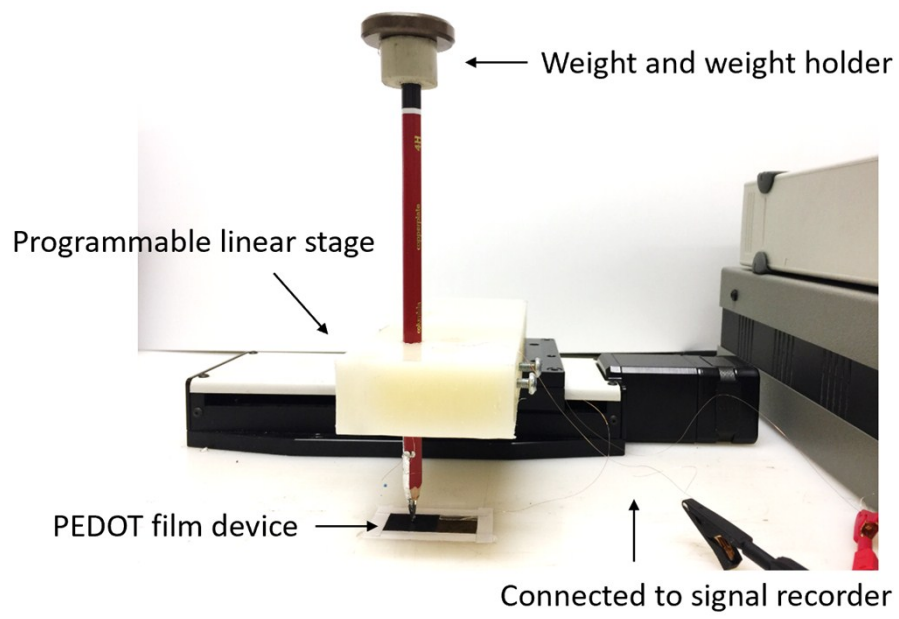


Figure S3. Digital photo of experiment setup.

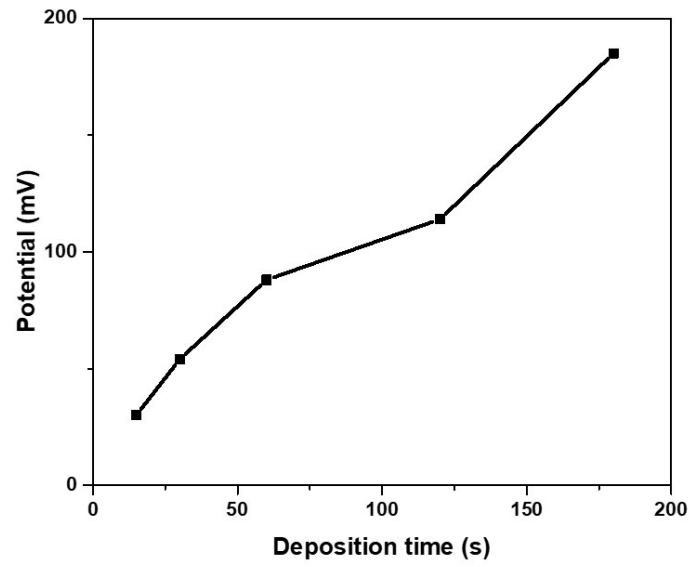


Figure S4. Output signals when Al rod attached onto PEDOT films with various deposition times at 8.0 kPa pressures.