

Identification of anti-inflammatory components of raw and steamed *Panax notoginseng* root by analyses of spectrum-effect relationship[†]

Zejun Zhang^{a, b, c, §}, Lijuan Chen^{a, §}, Xiuming Cui^{a, b, c, §}, Yiming Zhang^a, Yupiao Hu^a, Chengxiao Wang^a, Yin Xiong^{a, d*}

^a Faculty of Life Science and Technology, Kunming University of Science and Technology, Kunming 650500, China. *E-mail*: 18380802826@163.com.

^b Yunnan Key Laboratory of *Panax notoginseng*, Kunming University of Science and Technology, Kunming 650500, China.

^c Laboratory of sustainable utilization of *Panax notoginseng* Resources, Kunming University of Science and Technology, Kunming 650500, China.

^d LU-European Center for Chinese Medicine, Leiden University, Leiden 2333BE, The Netherlands.

* Corresponding Author: *yhsiung@163.com*.

§ These authors contributed equally to this work.

Supplementary Materials

Table S1. The information and peak area of fifteen common peaks in PN samples¹

Sample	NO.	Peak area of each peak														
		1 ^a	2	3	4	5	6	7	8	9	10	11	12	13	14	15
RPN 1	S1	360.	1348.8	98.2	93.2	85.7	727.1	229.3	59.7	0	0	0	0	0	0	0
RPN 2	S2	337.	1304.7	94.2	89.6	84.1	427.8	262.3	24.8	0	0	0	0	0	0	0
RPN 3	S3	560.	1435.1	108.4	173.2	173.8	1356.8	462.3	24.8	0	0	0	0	0	0	0
105°C-2h	S4	430.	1347.6	68.5	109.1	161	828.6	246.5	42.1	29.2	66.1	133.1	0	0	0	56.6
105°C-4h	S5	321.	1182.1	134.8	121.9	191.9	759.7	234.3	59.9	101.9	167.4	252.2	38.7	0	49.3	108.2
105°C-6h	S6	251.	1003.3	94.8	113.6	221.1	831.5	290.5	97.4	106.9	266.1	423.1	76.6	38.9	58.5	215.1
105°C-8h	S7	267	789.5	69.4	143.9	300.5	566.7	185	66.3	221.9	398.7	609	87.1	39.6	79.4	283.4
105°C-10h	S8	199.	685.2	78	147.8	341.9	704.8	226.3	92.2	230.8	465.1	709.7	125.	53.4	110.9	373.6
110°C-2h	S9	282.	1160	109.7	104.3	176.8	821.1	232.6	93.6	57.7	153.1	266	35.1	0	0	102

110°C-4h	S10	201.	1021.8	74.8	85.5	22.9	687.6	207.5	99	97.5	308.5	521.9	87.8	31.6	0	229
110°C-6h	S11	172.	781	71.6	132	402.8	634.5	194.2	68.5	201.5	581.5	873.3	136.	56.5	185.1	418.4
110°C-8h	S12	89.7	369.4	0	145.1	422.8	440	136.6	37.3	293.5	761.2	1136.9	173.	79.8	256.9	559.7
110°C-10h	S13	0	164.4	0	149.9	550.2	415.5	115.3	21.9	314.8	892.8	1373.8	274.	149.2	346.9	759.4
120°C-2h	S14	127.	629.9	79.4	106	349.1	505	161.8	27.5	169.8	571.1	800.2	134.	62.9	200.8	421
120°C-4h	S15	0	168.2	0	190.3	426.7	407	133.7	31.3	477.8	821.6	1281.5	142.	133.7	444.3	939.3
120°C-6h	S16	0	0	0	110.3	474	249.1	52.8	0	331	1030.7	1641.7	279.	135.6	709.8	1012.9
120°C-8h	S17	0	0	0	110.8	409.4	174.4	44	0	371.9	1002.8	1557.7	316.	153.4	642.1	1052.2
120°C-10h	S18	0	0	0	97.1	230.6	196.8	0	0	368.3	1058.7	1748.3	293.	150.7	532.3	1056.4
C.V. ^b (%)		81.1	67.4	75.5	23.1	52.4	46.6	53.9	70.2	76.7	77.6	78.0	85.6	95.6	114.7	88.8

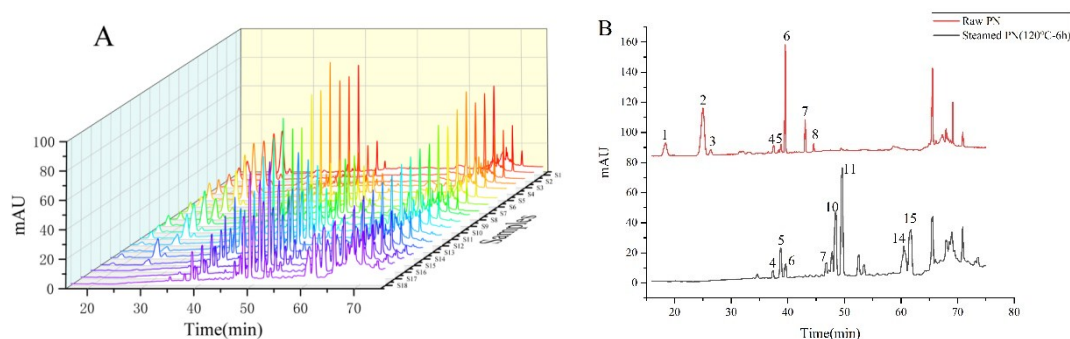
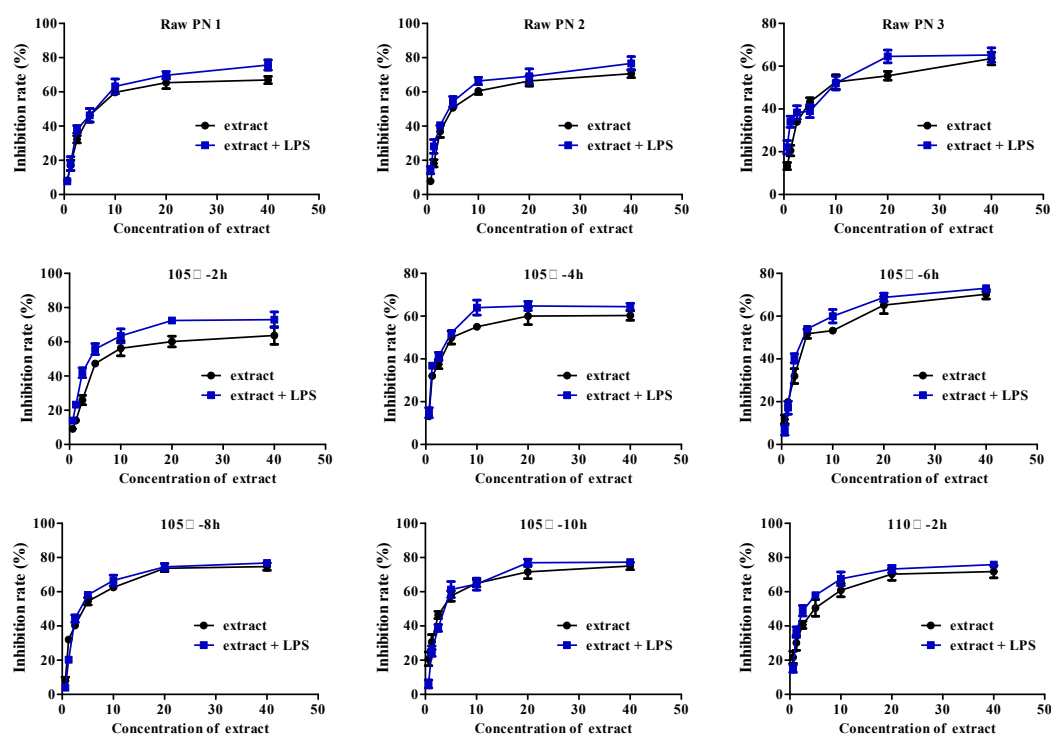
^aPeaks 1-15,^b C.V. (%) = $\delta / \mu \times 100$; δ is the standard deviation, μ is the average value of peak are.

Fig. S1 HPLC fingerprints (A) and the common peaks (B) of 18 batches of PN extracts.¹



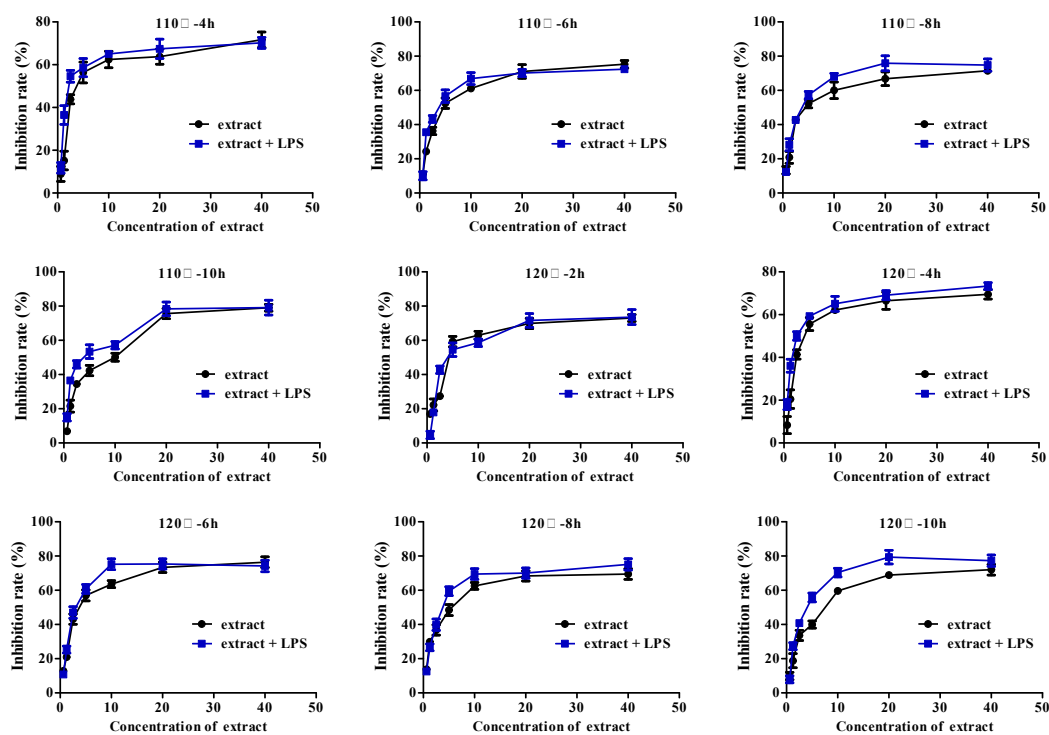


Fig. S2 Inhibition of RPN, SPN, and LPS on the cell growth.

references

- 1 Y. Xiong, L. J. Chen, Y. P. Hu and X. M. Cui, *Front. Pharmacol.*, 2017, **8**, DOI: 10.3389/fphar.2017.00745.